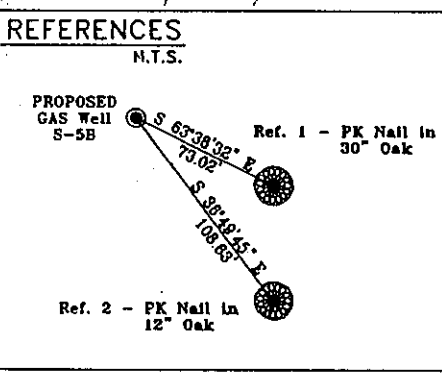
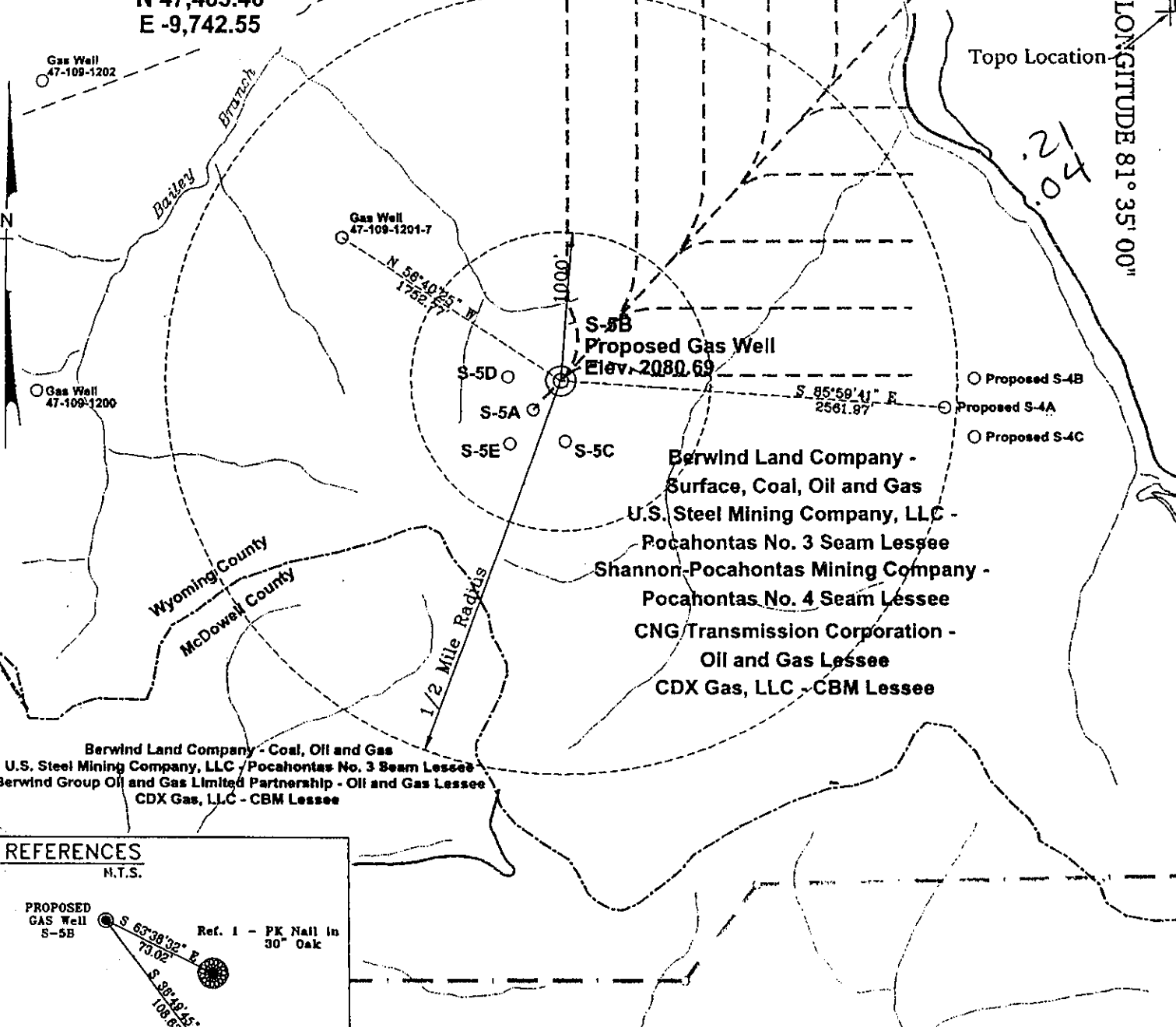


POCAHONTAS LAND COORDINATES

N 47,483.46
E -9,742.55

LATITUDE 37° 30' 00"

LONGITUDE 81° 35' 00"

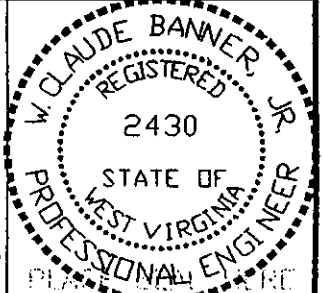


Notes:
No known domestic water supplies within 1000 feet.
(+) Denotes location of well on USGS map.

FILE No. CDXGAS
DRAWING NAME PLAT S-5B
Drawing Number CDX 000309a/LL
SCALE 1" = 1000'
MINIMUM DEGREE OF ACCURACY 1 : 2500
PROVEN SOURCE OF ELEVATION USGS B.M. F44
El. 1565

I THE UNDERSIGNED, HEREBY CERTIFY THAT THIS PLAT IS CORRECT TO THE BEST OF MY KNOWLEDGE AND BELIEF AND SHOWS ALL THE INFORMATION REQUIRED BY LAW AND THE REGULATIONS ISSUED AND PRESCRIBED BY THE DEPARTMENT OF MINES.

(SIGNED) *W. Claude Banner, Jr.*
R.P.E. 2430 R.P.S.



STATE OF WEST VIRGINIA
DIVISION OF ENVIRONMENTAL PROTECTION
OFFICE OF OIL AND GAS
NITRO, WV

DATE MARCH 13, 2000
OPERATOR'S WELL No. S-5B
API WELL No. 47 - 109 - 01894C
STATE COUNTY PERMIT

WELL TYPE: OIL GAS CBM LIQUID INJECTION WASTE DISPOSAL
(IF "GAS") PRODUCTION X STORAGE DEEP SHALLOW horizontal well

LOCATION: ELEVATION 2080.69 WATER SHED UNNAMED TRIBUTARY OF INDIAN CREEK
DISTRICT CENTER COUNTY WYOMING
QUADRANGLE WELCH, WV

SURFACE OWNER BERWIND LAND COMPANY ACREAGE 1045.06 Tax Map 143 - Parcel P/O 142-1
CBM ROYALTY OWNER BERWIND LAND COMPANY LEASE ACREAGE 2940.66

LEASE No. _____

PROPOSED WORK: DRILL X CONVERT DRILL DEEPER REDRILL FRACTURE OR STIMULATE PLUG OFF OLD FORMATION PERFORATE NEW FORMATION OTHER PHYSICAL CHANGE IN WELL (SPECIFY) _____

PLUG AND ABANDON CLEAN OUT AND REPLUG _____

TARGET FORMATION POCAHONTAS NO. 3 & NO. 4 SEAMS ESTIMATED DEPTH 1303' APR 2, 2000
WELL OPERATOR CDX GAS, LLC MANAGER JOSEPH ZUPANICK
ADDRESS P.O. BOX 609 ADDRESS P.O. BOX 609
PINEVILLE, WV 24874 PINEVILLE, WV 24874

6-6 0

WYO 1894C

State of West Virginia
Division of Environmental Protection
Section of Oil & Gas

Reviewed: ALP

Well Operator's Report of Well Work

Farm name: Berwind Land Company

Operator Well No: S-5B

Location: Elevation: 2,084.91

Quadrangle: WELCH

District: CENTER

County: WYOMING

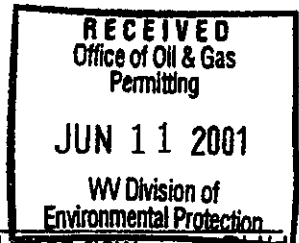
Latitude: 1100 Feet South of 37 Deg. 30 Min. 00 Sec.
Longitude: 200 Feet West of 81 Deg. 35 Min. 00 Sec.

Company: CDX Gas, LLC
P.O. Box 609
Pineville, WV 24874

Agent: JOSEPH A. ZUPANICK

Inspector: OFIE HELMICK
Permit Issued: 04/13/00
Well Work commenced: 07/19/00
Well Work completed: 01/13/01
Verbal plugging
Permission granted on: _____
Rotary x Cable _____ Rig
Total depth (ft) 1374'
Fresh water depths (ft) N/A
Salt water depths (ft) N/A
Is coal being mined in the area (Y/N)? Y
Coal depths (ft): Poca #4 - 1262 - 1264
Poca #3 - 1329 - 1334

Casing & Tubing Size	Used in Drilling	Left in Well	Cement Fill up
13 3/8"	37'	37'	Surface
9 5/8"	576'	576'	Surface
7"	1191'	1191'	Surface



OPEN FLOW DATA

Producing formation Pocahontas #3 Pay zone depth (ft) _____
 Gas: Initial open flow N/A Mcf/d Oil: Initial open flow _____ Bbl/d
 Final open flow N/A Mcf/d Final open flow _____ Bbl/d
 Time of open flow between initial and final tests: _____ hours
 Static rock pressure _____ psig (surface pressure) after _____ hours

Second Producing formation _____ Pay zone depth (ft) _____
 Gas: Initial open flow N/A Mcf/d Oil: Initial open flow _____ Bbl/d
 Final open flow N/A Mcf/d Final open flow _____ Bbl/d
 Time of open flow between initial and final tests: _____ hours
 Static rock pressure _____ psig (surface pressure) after _____ hours

Note: ON BACK OF THIS FORM, PUT THE FOLLOWING: 1) DETAILS OF PERFORATED INTERVALS, FRACTURING OR STIMULATING, PHYSICAL CHANGE, ETC. 2) THE WELL LOG WHICH IS A SYSTEMATICK DETAILED GEOLOGICAL RECORD OF ALL FORMATIONS, INCLUDING COAL ENCOUNTERED BY THE WELLBORE.

For: Joseph Zupanick
CDX Gas, LLC
By: J. A. Zupanick
Date: 6/8/01

JUN 15 2001

WYOM 1894 C

Details of Perforated Intervals, Fracturing or Stimulation, Physical Change, Etc.

Horizontally drilled Poca #3 coal seam

Well Log & Geologic Record - Depths from K.B.

Formation	Top	Bottom
Sand	0	610
Sand / Shale	610	624
Sand	624	764
Sand / Shale	764	802
Sand	802	877
Sand / Shale	877	1040
Sand	1040	1153
Sand / Shale	1153	1158
Sand	1158	1203
Shale	1203	1262
Coal - Pcoa #4	1262	1264
Shale	1264	1329
Coal - Poca #3	1329	1334
Shale	1334	1374
Total Depth	1374	

RECEIVED
Office of Oil & Gas
Permitting
JUN 11 2001
WV Division of
Environmental Protection