

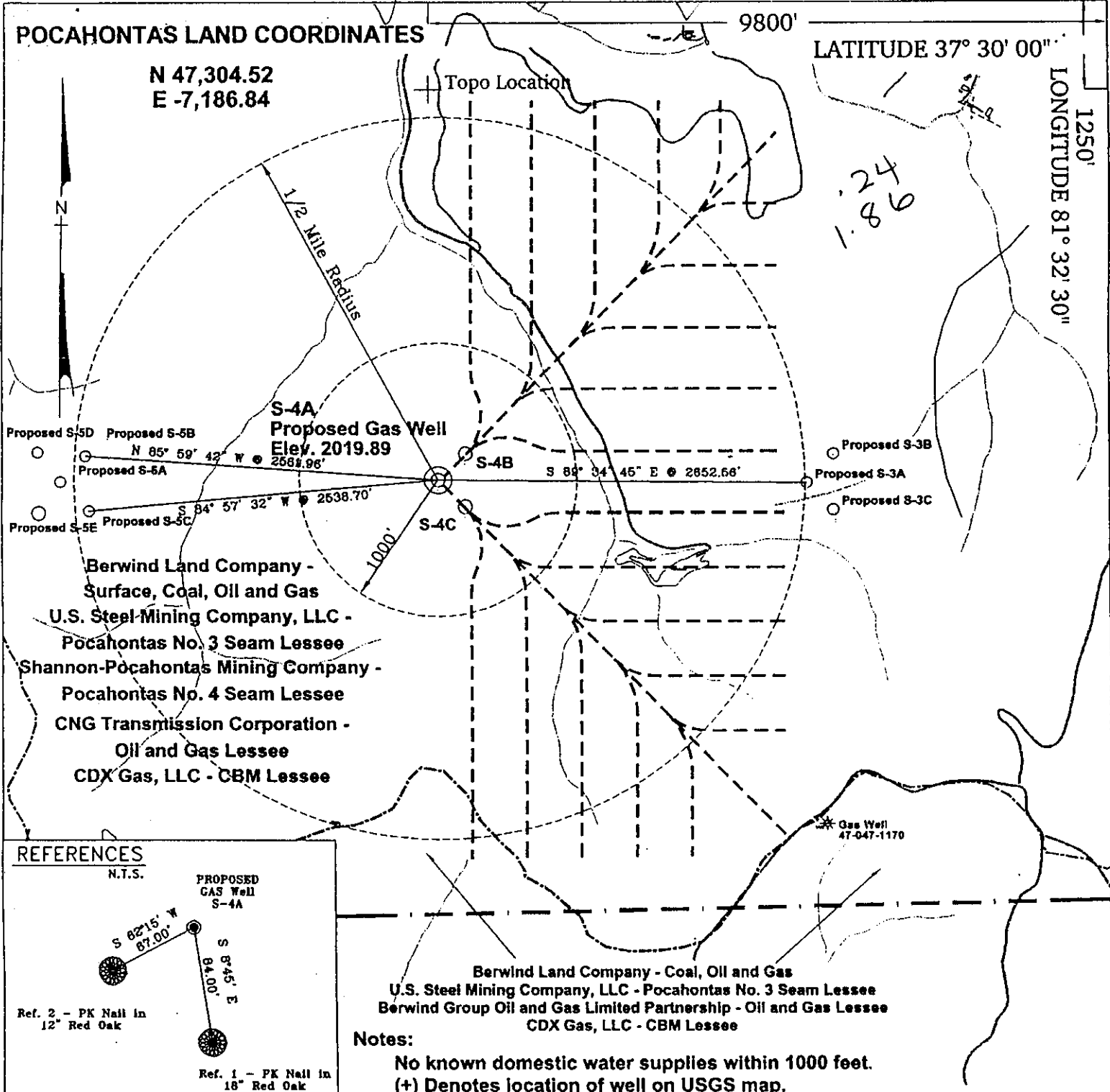
POCAHONTAS LAND COORDINATES

N 47,304.52
E -7,186.84

9800'

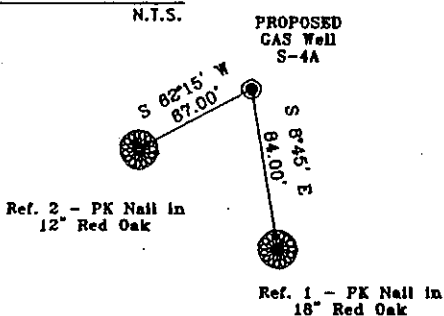
LATITUDE 37° 30' 00"

LONGITUDE 81° 32' 30"



Berwind Land Company -
Surface, Coal, Oil and Gas
U.S. Steel Mining Company, LLC -
Pocahontas No. 3 Seam Lessee
Shannon-Pocahontas Mining Company -
Pocahontas No. 4 Seam Lessee
CNG Transmission Corporation -
Oil and Gas Lessee
CDX Gas, LLC - CBM Lessee

REFERENCES



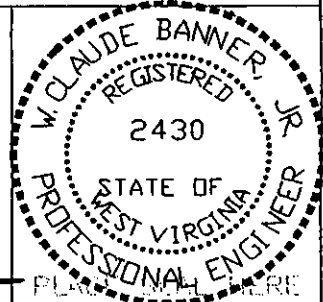
Berwind Land Company - Coal, Oil and Gas
U.S. Steel Mining Company, LLC - Pocahontas No. 3 Seam Lessee
Berwind Group Oil and Gas Limited Partnership - Oil and Gas Lessee
CDX Gas, LLC - CBM Lessee

Notes:
No known domestic water supplies within 1000 feet.
(+) Denotes location of well on USGS map.

FILE No. CDXGAS
DRAWING NAME \PLAT\S-4A
Drawing Number 3-2-00-1SP
SCALE 1" = 1000'
MINIMUM DEGREE OF ACCURACY 1 : 2500
PROVEN SOURCE OF ELEVATION USGS B.M. F44
EL. 1565

I THE UNDERSIGNED, HEREBY CERTIFY THAT THIS PLAT IS CORRECT TO THE BEST OF MY KNOWLEDGE AND BELIEF AND SHOWS ALL THE INFORMATION REQUIRED BY LAW AND THE REGULATIONS ISSUED AND PRESCRIBED BY THE DEPARTMENT OF MINES.

(SIGNED) *W. Claude Banner Jr.*
R.P.E. 2430 R.P.S.



**STATE OF WEST VIRGINIA
DIVISION OF ENVIRONMENTAL PROTECTION
OFFICE OF OIL AND GAS
NITRO, WV**

DATE MARCH 13, 2000
OPERATOR'S WELL No. S-4A
API WELL No. 47 - 109 - 01890C
STATE COUNTY PERMIT

WELL TYPE: OIL GAS CBM LIQUID INJECTION WASTE DISPOSAL
(IF "GAS") PRODUCTION X STORAGE DEEP SHALLOW
LOCATION: ELEVATION 2019.89 WATER SHED UNNAMED TRIBUTARY OF INDIAN CREEK
DISTRICT CENTER COUNTY WYOMING
QUADRANGLE WELCH, WV

SURFACE OWNER BERWIND LAND COMPANY ACREAGE 1045.06 Tax Map 143 - Parcel P/O 142-1
CBM ROYALTY OWNER BERWIND LAND COMPANY LEASE ACREAGE 867.22 Tax Map 143 - Parcel 1

LEASE No. _____

PROPOSED WORK: DRILL X CONVERT DRILL DEEPER REDRILL FRACTURE OR
STIMULATE PLUG OFF OLD FORMATION PERFORATE NEW
FORMATION OTHER PHYSICAL CHANGE IN WELL (SPECIFY) _____

PLUG AND ABANDON CLEAN OUT AND REPLUG
TARGET FORMATION POCAHONTAS NO. 3 & NO. 4 SEAMS ESTIMATED DEPTH 1179' APR 24 2000
WELL OPERATOR CDX GAS, LLC MANAGER JOSEPH ZUPANICK
ADDRESS P.O. BOX 609 ADDRESS P.O. BOX 609
PINEVILLE, WV 24874 PINEVILLE, WV 24874

6-0 0

WYO 1890C

State of West Virginia
Division of Environmental Protection
Section of Oil & Gas

Revision AP

Well Operator's Report of Well Work

Farm name: Berwind Land Company

Operator Well No: S-4A

Location: Elevation: 2,060.89

Quadrangle: WELCH

District: CENTER

County: WYOMING

Latitude: 1250 Feet South of 37 Deg. 30 Min. 00 Sec.
Longitude: 9800 Feet West of 81 Deg. 32 Min. 30 Sec.

Company: CDX Gas, LLC
P.O. Box 609
Pineville, WV 24874

Agent: JOSEPH A. ZUPANICK

Inspector: OFIE HELMICK
Permit Issued: 04/13/00
Well Work commenced: 07/06/00
Well Work completed: 07/18/00
Verbal plugging _____
Permission granted on: _____
Rotary x Cable _____ Rig _____
Total depth (ft) 4050 1059
Fresh water depths (ft) N/A
Salt water depths (ft) N/A
Is coal being mined in the area (Y/N)? Y
Coal depths (ft): N/A

Casing & Tubing Size	Used in Drilling	Left in Well	Cement Fill up
13 3/8"	32'	32'	Surface
9 5/8"	432'	432'	Surface
7"	928'	928'	Surface

RECEIVED
Office of Oil & Gas
Permitting
JUN 11 2001
WV Division of
Environmental Protection

OPEN FLOW DATA

Producing formation Non-Producer Pay zone depth (ft) _____
 Gas: Initial open flow N/A Mcf/d Oil: Initial open flow _____ Bbl/d
 Final open flow N/A Mcf/d Final open flow _____ Bbl/d
 Time of open flow between initial and final tests: _____ hours
 Static rock pressure _____ psig (surface pressure) after _____ hours

Second Producing formation _____ Pay zone depth (ft) _____
 Gas: Initial open flow N/A Mcf/d Oil: Initial open flow _____ Bbl/d
 Final open flow N/A Mcf/d Final open flow _____ Bbl/d
 Time of open flow between initial and final tests: _____ hours
 Static rock pressure _____ psig (surface pressure) after _____ hours

Note: ON BACK OF THIS FORM, PUT THE FOLLOWING: 1) DETAILS OF PERFORATED INTERVALS, FRACTURING OR STIMULATING, PHYSICAL CHANGE, ETC. 2) THE WELL LOG WHICH IS A SYSTEMATICK DETAILED GEOLOGICAL RECORD OF ALL FORMATIONS, INCLUDING COAL ENCOUNTERED BY THE WELLBORE.

Joseph Zupanick
For: CDX Gas, LLC
By: J.A. Zupanick
Date: 6/21/01

JUN 25 2001

WV 109-01890 C

Operator: S-4A
API No. 47- 109-01890 C
Location: Wyoming County

Details of Perforated Intervals, Fracturing or Stimulation, Physical Change, Etc.

N/A

Well Log & Geologic Record - Depths from K.B.

Formation	Top	Bottom
Overburden	0	5
Sand	5	520
Shale	520	530
Sand	530	664
Sand / Shale	664	700
Sand	700	735
Sand / Shale	766	941
Shale	941	960
Sand	960	1059
Total Depth	1059	

RECEIVED
Office of Oil & Gas
Permitting
JUN 11 2001
WV Division of
Environmental Protection