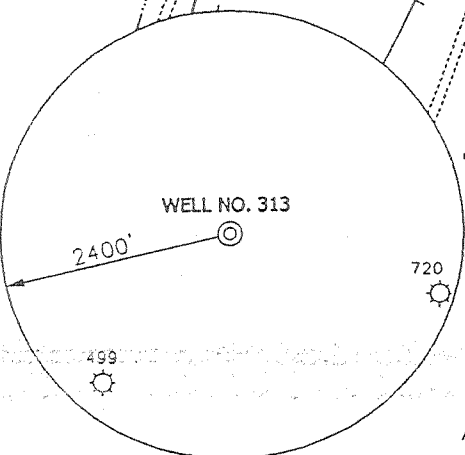
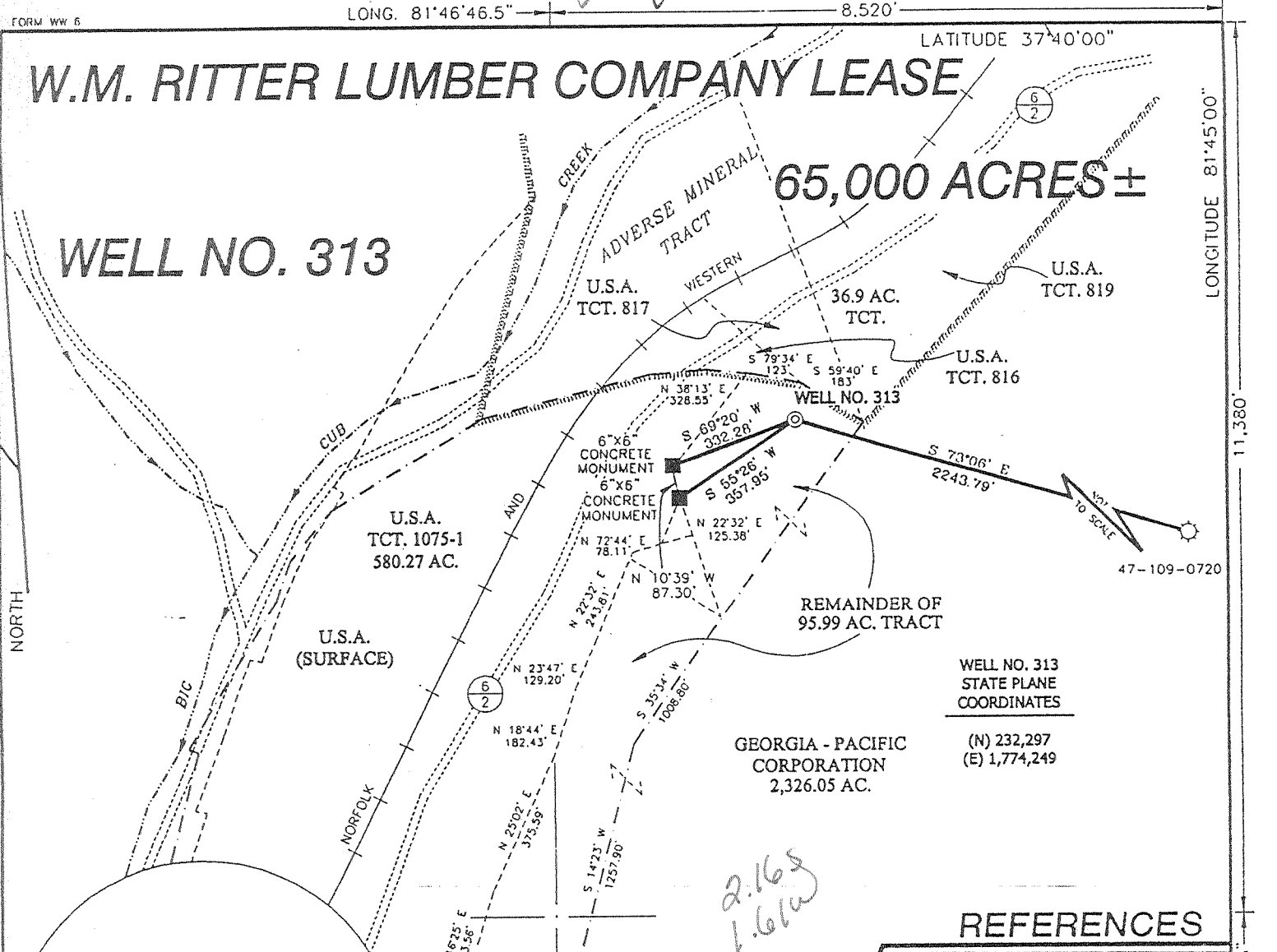


W.M. RITTER LUMBER COMPANY LEASE

65,000 ACRES ±

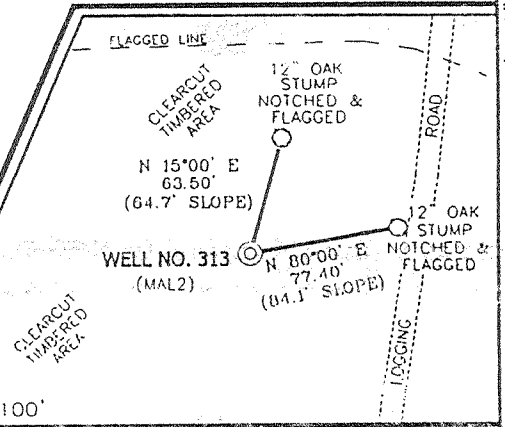
WELL NO. 313



- NOTES ON SURVEY**
1. TIES TO WELLS AND CORNERS ARE BASED ON STATE PLANE GRID NORTH WV SOUTH ZONE NAD '27.
 2. TIES TO REFERENCES ARE BASED ON MAGNETIC NORTH 3/17/99.
 3. LEASE BOUNDARY SHOWN HEREON TAKEN FROM DESCRIPTIONS FOUND IN DEED BOOK 246 PAGE 115 AND DEED BOOK 69 PAGE 369.
 4. SURFACE OWNER AND ADJOINER INFORMATION TAKEN FROM THE ASSESSOR AND COUNTY CLERK RECORDS OF WYOMING COUNTY IN MARCH, 1999.
 5. WELL LAT./LONG. ESTABLISHED BY DGPS(SUBMETER MAPPING GRADE).

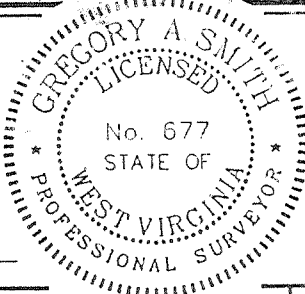
2.165
1.61W

REFERENCES



I THE UNDERSIGNED, HEREBY CERTIFY THAT THIS PLAT IS CORRECT TO THE BEST OF MY KNOWLEDGE AND BELIEF AND SHOWS ALL THE INFORMATION REQUIRED BY LAW AND THE REGULATIONS ISSUED AND PRESCRIBED BY THE DEPARTMENT OF ENERGY.

P.S. 677 Gregory A. Smith



(+) DENOTES LOCATION OF WELL ON UNITED STATES TOPOGRAPHIC MAPS
 DATE MAY 11, 19 99
 OPERATORS WELL NO. RITTER # 313
 API WELL NO. 47-109-01821
 STATE COUNTY PERMIT

MINIMUM DEGREE OF ACCURACY 1 / 2500 FILE NO. 3999P313 (77-2)
 PROVEN SOURCE OF ELEVATION JUNCTION OF ROADS ELEVATION 1260' SCALE 1" = 400'

STATE OF WEST VIRGINIA
 DIVISION OF ENVIRONMENTAL PROTECTION
 OFFICE OF OIL AND GAS

WELL TYPE : OIL GAS LIQUID INJECTION WASTE DISPOSAL IF "GAS" PRODUCTION STORAGE DEEP SHALLOW

LOCATION :
 ELEVATION 1303' WATERSHED BIG CUB CREEK
 DISTRICT CLEAR FORK COUNTY WYOMING QUADRANGLE MALLORY 7.5'
 SURFACE OWNER GEORGIA - PACIFIC CORPORATION ACREAGE 2326.05
 ROYALTY OWNER GEORGIA - PACIFIC CORPORATION LEASE ACREAGE 65.000
 PROPOSED WORK :
 LEASE NO. 4157
 DRILL CONVERT DRILL DEEPER REDRILL FRACTURE OR STIMULATE PLUG OFF OLD FORMATION PERFORATE NEW FORMATION PLUG AND ABANDON CLEAN OUT AND REPLUG OTHER
 PHYSICAL CHANGE IN WELL (SPECIFY) _____ TARGET FORMATION DEVONIAN SHALE
 ESTIMATED DEPTH 5990'

WELL OPERATOR BLAZER ENERGY CORPORATION DESIGNATED AGENT RICHARD SMELTZER
 ADDRESS P.O. BOX 2347 CHARLESTON, WV 25328 ADDRESS P.O. BOX 2347 CHARLESTON, WV 25328

DEEP WELL

6-6-2066

LONGITUDE 81°45'00" 11.380' LAT. 37°38'07.3"

COUNTY NAME WYO PERMIT 1221

WR-35

25-Jun-99
API # 47-

109-01821

K

State of West Virginia
Division of Environmental Protection
Section of Oil and Gas

Well Operator's Report of Well Work

Farm Name: GEORGIA PACIFIC CORP

Operator Well No.: RITTER 313

LOCATION: Elevation: 1,303.00

Quadrangle: MALLORY

District: CLEAR FORK

County: WYOMING

Latitude: 11380

Feet South of

37 DEG 40 MIN 0 SEC

Longitude: 8520

Feet West of

81 DEG 45 MIN 0 SEC

Company: BLAZER ENERGY CORPORATION
P.O. BOX 2347
CHARLESTON, WV 25328

Agent: Richard Smeltzer

Inspector: OFIE HELMICK

Permit Issued: 6/28/99

Well work commenced: 8/12/99

Well work completed: 9/8/99

Verbal Plugging

Permission granted on:

Rotary Rig Cable Rig

Total Depth 5740' feet

Fresh water depths (ft) 42'

Salt water depths (ft) 465', 610', 1820', 1830'

Casing & Tubing Size	Used in Drilling	Left in Well	Cement Fill Up Cu. Ft.
13-3/8"	32'	32'	GRTD
9-5/8"	275'	275'	118 FT ³
7"	1557'	1557'	286 FT ³
4-1/2"	5736'	5736'	570 FT ³

Is coal being mined in area?

Coal Depths (ft): 143'-145', 535-539', 602-606'

OPEN FLOW DATA

See

Producing formation Rhinestreet, L. Huron, Big Lime

Pay Zone Depth (ft):

Reverse

Gas: Initial open flow 67 MCF/d

Oil: Initial open flow Bbl/d

Final open flow: 801 MCF/d

Final open flow:

Time of open flow between initial and final tests

Hours

Static rock pressure 490 psig (surface pressure) after

Hours

Second producing formation

Pay Zone Depth (ft):

Gas: Initial open flow MCF/d

Oil: Initial open flow Bbl/d

Final open flow: MCF/d

Final open flow:

Time of open flow between initial and final tests

Hours

Static rock pressure psig (surface pressure) after

Hours

NOTE: ON BACK OF THIS FORM PUT THE FOLLOWING: 1) DETAILS OF PERFORATED INTERVALS, FRACTURING OR STIMULATING, PHYSICAL CHANGE, ETC. 2) THE WELL LOG WHICH IS A SYSTEMATIC DETAILED GEOLOGICAL RECORD OF ALL FORMATIONS, INCLUDING COAL ENCOUNTERED BY THE WELLBC

For: BLAZER ENERGY CORPORATION

By: Barbara L. Husband
Date: 12-15-99

WV 0 1821

EASTERN STATES OIL & GAS, INC.
WR-35 COMPLETION REPORT - Attachment
Well Treatment Summary

Well: W.M. Ritter 313

API# 47-109-01821

Date	9/2/99	9/2/99	9/2/99			
Type Frac						
Acid, N ₂ , Foam, Water	N ²	N ²	Acid			
Zone Treated	Rhinestreet	L. Huron	Big Lime			
# Perfs	30	31	47			
From - To:	5216-5628	4527-5028	2740-2862			
BD Pressure @ psi	3394	2852	1211			
ATP psi	3006	2259	1430			
Avg. Rate, B=B/M, S= SCF/M	51,989 S	52,084 S	5 B			
Max. Treat Press psi	3394	2852	2590			
ISIP psi	2415	2100	329			
Frac Gradient	.54	.52	.58			
10 min S-I Pressure	2058	1707	1414			
Material Volume						
Sand-sks						
Water-bbl	33.3	1-1/2	1.5			
SCF N ₂	712,323	861,156	99,861			
Acid-gal	500 gal 7-1/2%	600 gal 7.1%	5000 gal 15.5%			
NOTES:						

TOP	BASE	FORMATION	REMARKS
0	20	Top Soil	
20	143	Sand Shale	
143	145	Coal & Slate	
145	260	Sand Shale	
260	515	Sand	1/4" stream water @ 465
515	535	Sand Shale	
535	539	Coal	
539	602	Shale	
602	606	Coal	
606	697	Sand Shale	1/4" stream water @ 610
697	1513	Salt Sand	
1780	1960	Ravencriff	Damp @ 1820', GT @ 1600'=NS, Damp @ 1830'
2085	2227	U. Maxton	GT @ 1828', 2207', 2457', 2583', 2709'=NS
2349	2397	L. Maxton	
2447	2521	L. Lime	
2521	2876	Big Lime	
2995	3112	Weir	GT @ 2960', 3648', 3869', 4468, 5037'=67 mcf/d
3443	3461	Sunbury	GT @ 3368'=56 mcf/d
3461	3503	Berea	GT @ 3556'=56 mcf/d
3503	4523	U. Huron	
3754	3783	Gordon	
4523	5030	L. Huron	
5030	5174	Java	
5174	5445	Angola	GT @ 5350'=68 mcf/d
5445	5735	Rhinestreet	
5735		Onondaga	
5740		TD	GT @ 5740'=47 mcf/d