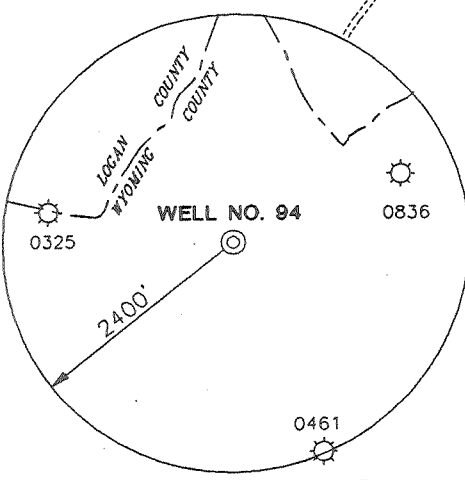
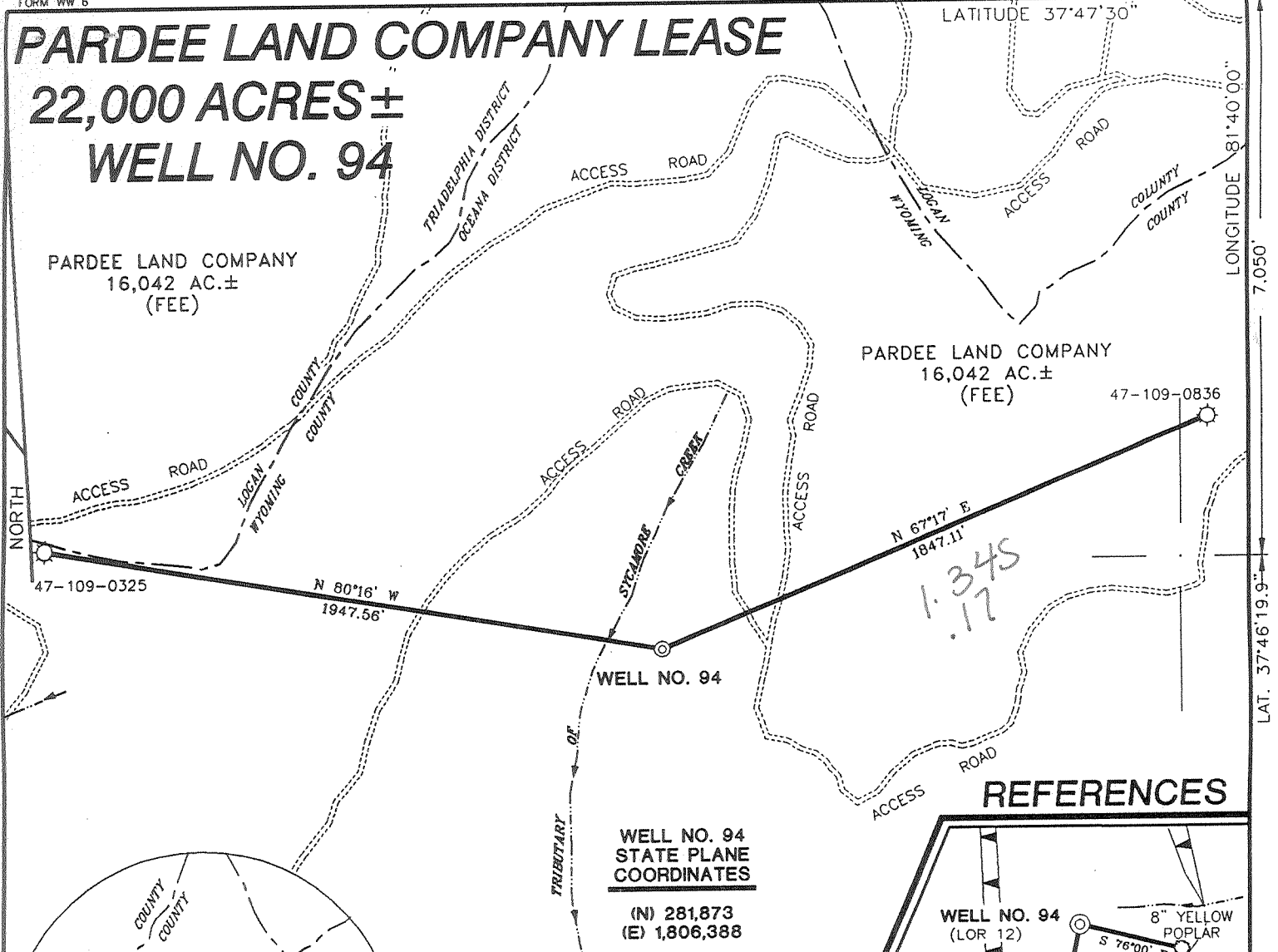


# PARDEE LAND COMPANY LEASE

## 22,000 ACRES ± WELL NO. 94

PARDEE LAND COMPANY  
16,042 AC. ±  
(FEE)

PARDEE LAND COMPANY  
16,042 AC. ±  
(FEE)



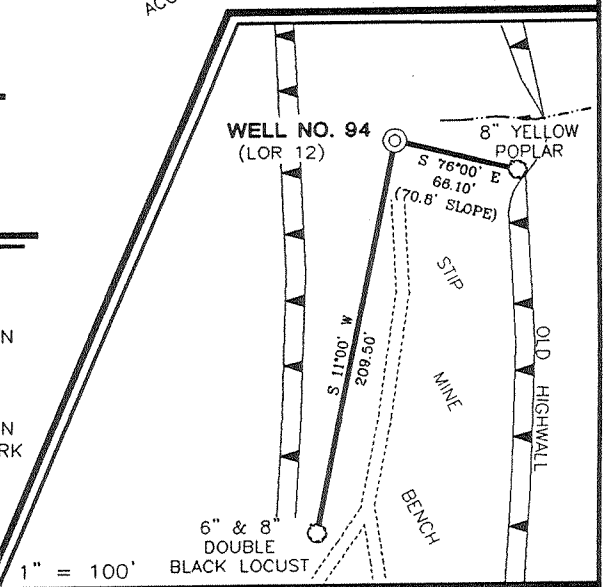
### WELL NO. 94 STATE PLANE COORDINATES

(N) 281,873  
(E) 1,806,388

### NOTES ON SURVEY

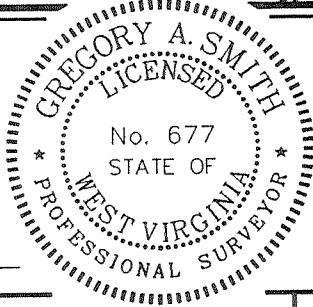
1. TIES TO WELLS ARE BASED ON STATE PLANE GRID NORTH WV SOUTH ZONE NAD '27.
2. TIES TO REFERENCES ARE BASED ON MAGNETIC NORTH 2/16/99.
3. LEASE BOUNDARY DOES NOT FALL WITHIN THE SCOPE OF THIS PLAT.
4. SURFACE OWNER INFORMATION TAKEN FROM THE ASSESSOR AND COUNTY CLERK RECORDS OF LOGAN AND WYOMING COUNTIES IN APRIL, 1998.
5. WELL LAT./LONG. ESTABLISHED BY DGPS (SUBMETER MAPPING GRADE).

### REFERENCES



I THE UNDERSIGNED, HEREBY CERTIFY THAT THIS PLAT IS CORRECT TO THE BEST OF MY KNOWLEDGE AND BELIEF AND SHOWS ALL THE INFORMATION REQUIRED BY LAW AND THE REGULATIONS ISSUED AND PRESCRIBED BY THE DEPARTMENT OF ENERGY.


P.S. 677 Gregory A. Smith



(+) DENOTES LOCATION OF WELL ON UNITED STATES TOPOGRAPHIC MAPS.  
 DATE FEBRUARY 22, 19 99  
 OPERATORS WELL NO. PARDEE #94  
 API WELL NO. 47-109-01804  
 STATE COUNTY PERMIT

MINIMUM DEGREE OF ACCURACY 1 / 2500 FILE NO. 3906P94 (76-6)  
 PROVEN SOURCE OF ELEVATION TOP OF KNOB ELEVATION 2655' SCALE 1" = 500'

STATE OF WEST VIRGINIA  
 DIVISION OF ENVIRONMENTAL PROTECTION  
 OFFICE OF OIL AND GAS



WELL TYPE : OIL  GAS  LIQUID INJECTION  WASTE DISPOSAL  IF "GAS" PRODUCTION  STORAGE  DEEP  SHALLOW

LOCATION :  
 ELEVATION 1905' WATERSHED TRIBUTARY OF SYCAMORE CREEK OF HUFF CREEK  
 DISTRICT OCEANA COUNTY WYOMING QUADRANGLE LORADO 7.5'  
 SURFACE OWNER PARDEE LAND COMPANY ACREAGE 16.042  
 ROYALTY OWNER PARDEE LAND COMPANY LEASE ACREAGE 22.000  
 PROPOSED WORK :  
 DRILL  CONVERT  DRILL DEEPER  REDRILL  FRACTURE OR STIMULATE  PLUG OFF OLD FORMATION   
 PERFORATE NEW FORMATION  PLUG AND ABANDON  CLEAN OUT AND REPLUG  OTHER   
 PHYSICAL CHANGE IN WELL (SPECIFY) \_\_\_\_\_ TARGET FORMATION DEVONIAN SHALE  
 ESTIMATED DEPTH 6400' 7094'

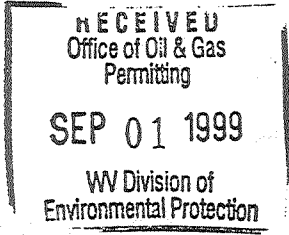
WELL OPERATOR BLAZER ENERGY CORPORATION DESIGNATED AGENT RICHARD SMELTZER  
 ADDRESS P.O. BOX 2347 CHARLESTON, WV 25328 ADDRESS P.O. BOX 2347 CHARLESTON, WV 25328

DEEPWELL

6-6 266

WYO COUNTY NAME PERMIT 1804

WR-35



7-May-99  
API # 47-109-01804

State of West Virginia  
Division of Environmental Protection  
Section of Oil and Gas

Reviewed LED

Well Operator's Report of Well Work

Farm Name: Pardee Land Co.

Operator Well No.: Pardee Land 94

LOCATION: Elevation: 1,905.00 Quadrangle: Lorado

District: Oceana County: Wyoming  
Latitude: 7050 Feet South of 37 Deg. 47 Min. 30 Sec.  
Longitude: 880 Feet West of 81 Deg. 40 Min. 0 Sec.

Company: BLAZER ENERGY CORPORATION  
P.O. BOX 2347  
CHARLESTON, WV 25328

Agent: Richard Smeltzer

Inspector: Ofie Helmick

Permit Issued: 5/7/99

Well work commenced: 5/21/99

Well work completed: 6/21/99

Verbal Plugging

Permission granted on:

Rotary Rig X Cable Rig \_\_\_\_\_

Total Depth 6339 feet

Fresh water depths (ft) 165

Salt water depths (ft) 2793

Is coal being mined in area?

Coal Depths (ft): 318, 409, 882

| Casing & Tubing Size | Used in Drilling | Left in Well | Cement Fill Up Cu. Ft. |
|----------------------|------------------|--------------|------------------------|
| 13 3/8"              | 36'              | 36'          | Grtd                   |
| 9 5/8"               | 1027'            | 1027'        | 395 Ft <sup>3</sup>    |
| 7"                   | 3019'            | 3019'        | 578 Ft <sup>3</sup>    |
| 4 1/2"               | 6329'            | 6329'        | 471 Ft <sup>3</sup>    |
|                      |                  |              |                        |

OPEN FLOW DATA

Producing formation L Devonian Shale, U Devonian Shale, Weir/Berea Pay Zone Depth (ft): See

Gas: Initial open flow NS MCF/d Oil: Initial open flow \_\_\_\_\_ Bbl/d Attached

Final open flow: 764 MCF/d Final open flow: \_\_\_\_\_

Time of open flow between initial and final tests \_\_\_\_\_ Hours

Static rock pressure 720 psig (surface pressure) after \_\_\_\_\_ Hours

Second producing formation \_\_\_\_\_ Pay Zone Depth (ft): \_\_\_\_\_

Gas: Initial open flow \_\_\_\_\_ MCF/d Oil: Initial open flow \_\_\_\_\_ Bbl/d

Final open flow: \_\_\_\_\_ MCF/d Final open flow: \_\_\_\_\_

Time of open flow between initial and final tests \_\_\_\_\_ Hours

Static rock pressure \_\_\_\_\_ psig (surface pressure) after \_\_\_\_\_ Hours

NOTE: ON BACK OF THIS FORM PUT THE FOLLOWING: 1) DETAILS OF PERFORATED INTERVALS, FRACTURING OR STIMULATING, PHYSICAL CHANGE, ETC. 2) THE WELL LOG WHICH IS A SYSTEMATIC DETAILED GEOLOGICAL RECORD OF ALL FORMATIONS, INCLUDING COAL ENCOUNTERED BY THE WELLBOF

For: BLAZER ENERGY CORPORATION

By: [Signature]  
Date: 8/31/99

WYO 1804

SEP 7 1999

**EASTERN STATES OIL & GAS, INC.**  
**WR-35 COMPLETION REPORT - Attachment**  
**Well Treatment Summary**

Well: Pardee Land 94

API# 47-109-01804

| Date                               | 6-19-99              | 6-19-99              | 6-19-99        |  |  |  |
|------------------------------------|----------------------|----------------------|----------------|--|--|--|
| Type Frac                          |                      |                      |                |  |  |  |
| Acid, N <sub>2</sub> , Foam, Water | N <sup>2</sup>       | N <sup>2</sup>       | N <sup>2</sup> |  |  |  |
| Zone Treated                       | Lower Devonian Shale | Upper Devonian Shale | Weir, Berea    |  |  |  |
| # Perfs                            | 30                   | 35                   | 30             |  |  |  |
| From - To:                         | 5780-6274            | 4221-5536            | 3628-3920      |  |  |  |
| BD Pressure @ psi                  | 3506                 | 2910                 | 2576           |  |  |  |
| ATP psi                            | 2179                 | 2645                 | 2150           |  |  |  |
| Avg. Rate, B=B/M, S= SCF/M         | 47,890 S             | 51,225 S             | 52,318 S       |  |  |  |
| Max. Treat Press psi               | 3535                 | 4219                 | 2576           |  |  |  |
| ISIP psi                           | 2800                 | 2800                 | 1830           |  |  |  |
| Frac Gradient                      | .46                  | .57                  | .48            |  |  |  |
| 10 min S-I Pressure                | 2092                 | 1709                 | 1298           |  |  |  |
| Material Volume                    |                      |                      |                |  |  |  |
| Sand-sks                           |                      |                      |                |  |  |  |
| Water-bbl                          |                      |                      |                |  |  |  |
| SCF N <sub>2</sub>                 | 441,504              | 1,303,264            | 519,014        |  |  |  |
| Acid-gal                           | 420 gal 7½%          | 1100 gal 8.1%        | 400 gal 8.1%   |  |  |  |
| NOTES:                             |                      |                      |                |  |  |  |

RECEIVED  
Office of Oil & Gas  
Permitting  
SEP 01 1999  
WV Division of  
Environmental Protection

**Formation Record**

| TOP  | BOTTOM | FORMATION       | Remarks                           |
|------|--------|-----------------|-----------------------------------|
| 0    | 15     | Top soil & Fill |                                   |
| 15   | 318    | Sand            | ½" strm wtr @ 165'                |
| 318  | 321    | Coal            |                                   |
| 321  | 409    | Sand            |                                   |
| 409  | 412    | Coal            |                                   |
| 412  | 570    | Sand            |                                   |
| 570  | 882    | Sandy Shale     |                                   |
| 882  | 885    | Coal            |                                   |
| 885  | 1065   | Sandy Shale     |                                   |
| 1065 | 1350   | Sand            |                                   |
| 1350 | 1459   | Sandy Shale     |                                   |
| 1459 | 2138   | Salt Sand       | GT @ 1608' - NS                   |
| 2563 | 2581   | Upper Maxton    | GT @ 2665' - NS                   |
| 2887 | 2914   | Lower Maxton    | GT @ 2914' - NS                   |
| 2952 | 3026   | Little Lime     | Hole damp @ 2973'                 |
| 3050 | 3353   | Big Lime        | GT @ 3112', 3174', 3486' - All NS |
| 3488 | 3535   | Weir            | GT @ 3735' - NS                   |
| 3871 | 3890   | Sunbury         |                                   |
| 3890 | 3920   | Berea           |                                   |
| 3920 | 4986   | Upper Huron     | Gt 3984', 4544', 4668' - All NS   |
|      |        | Gordon          |                                   |
| 4986 | 5538   | Lower Huron     | GT @ 5343' - Odor                 |
| 5538 | 5696   | Java            |                                   |
| 5696 | 5950   | Angola          |                                   |
| 5950 | 6334   | Rhinestreet     | GT @ 6060' - Odor                 |
| 6334 |        | Onondaga        |                                   |
| 6339 |        | TD (Drillers)   | GT @ TD - NS                      |