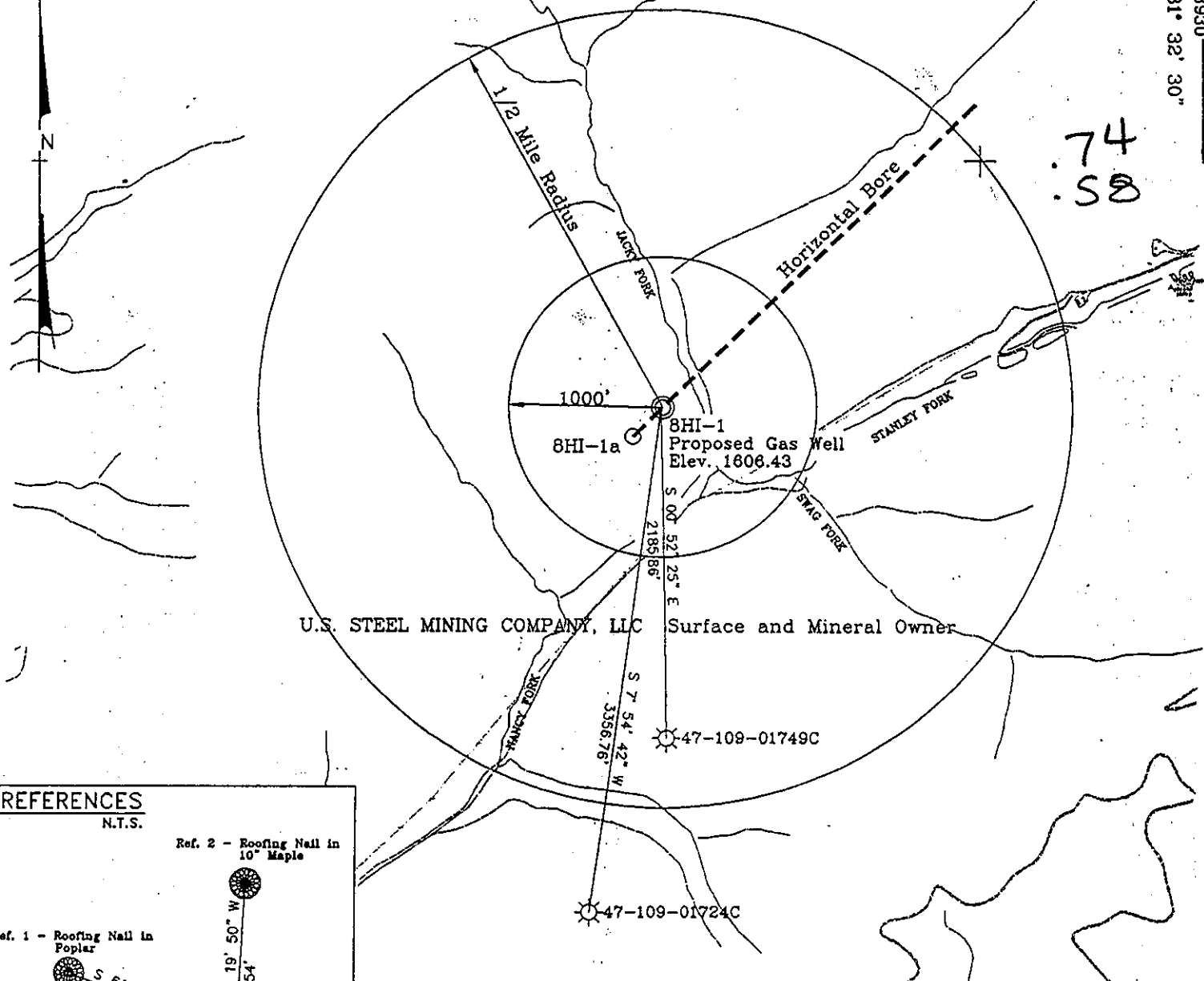


POCAHONTAS LAND COORDINATES

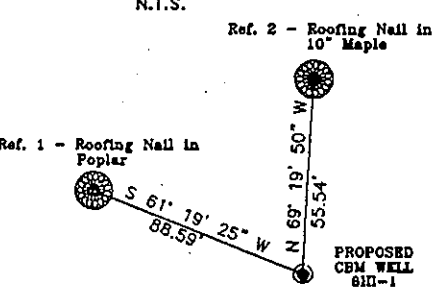
N 60049.162  
E -536.046

3070'  
Lat. 37° 32' 30"  
Long. 81° 32' 30"  
3930'



74  
58

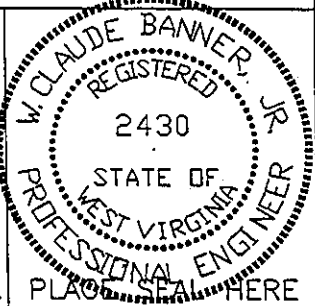
REFERENCES



No known domestic water supplies within 1000 feet.  
(+) Denotes location of well on USGS map.

FILE No. CDX  
DRAWING NAME \PLAT\8HI-1  
SCALE 1" = 1000'  
MINIMUM DEGREE OF ACCURACY 1 : 2500  
PROVEN SOURCE OF ELEVATION USGS B.M. F44  
EL. 1565

I THE UNDERSIGNED, HEREBY CERTIFY THAT THIS PLAT IS CORRECT TO THE BEST OF MY KNOWLEDGE AND BELIEF AND SHOWS ALL THE INFORMATION REQUIRED BY LAW AND THE REGULATIONS ISSUED AND PRESCRIBED BY THE DEPARTMENT OF MINES.  
(SIGNED) W. Claude Banner, Jr.  
R.P.E. \_\_\_\_\_ R.P.S. \_\_\_\_\_



STATE OF WEST VIRGINIA  
DIVISION OF ENVIRONMENTAL PROTECTION  
OFFICE OF OIL AND GAS  
NITRO, WV

DATE OCTOBER 6 19 98  
OPERATOR'S WELL No. 8HI-1  
API WELL No. 47 - 109 01773 C  
STATE COUNTY PERMIT

WELL TYPE: OIL GAS CBM LIQUID INJECTION WASTE DISPOSAL  
(IF "GAS") PRODUCTION X STORAGE DEEP SHALLOW

LOCATION: ELEVATION 1606.43 WATER SHED JACKY FORK OF NANCY FORK OF INDIAN CREEK  
DISTRICT CENTER COUNTY WYOMING  
QUADRANGLE PINEVILLE, WV

SURFACE OWNER U.S. STEEL MINING COMPANY, LLC ACREAGE 37977.66  
CBM ROYALTY OWNER U.S. STEEL MINING COMPANY, LLC LEASE ACREAGE \_\_\_\_\_  
LEASE No. \_\_\_\_\_

PROPOSED WORK: DRILL X CONVERT DRILL DEEPER REDRILL FRACTURE OR STIMULATE PLUG OFF OLD FORMATION PERFORATE NEW FORMATION OTHER PHYSICAL CHANGE IN WELL (SPECIFY) 6-6 0

PLUG AND ABANDON \_\_\_\_\_ CLEAN OUT AND REPLUG \_\_\_\_\_  
TARGET FORMATION POCAHONTAS NO. 3 & PENN. COALS ESTIMATED DEPTH 718' NOV 09 1998  
WELL OPERATOR CDX GAS, LLC MANAGER JOSEPH ZUPANICK  
ADDRESS P.O. Box 609 ADDRESS P.O. Box 609  
Pineville, WV 24874 Pineville, WV 24874

WYO 1-773 C

WR-35

4 Nov. 99  
API # 47-109-1773 C

State of West Virginia  
Division of Environmental Protection  
Section of Oil & Gas

Reviewed \_\_\_\_\_

Well Operator's Report of Well Work

Farm name: U.S. Steel Mining Company, LLC

Operator Well No: 8HI-1a

Location: Elevation: 1800.89

Quadrangle: PINEVILLE

District: CENTER

County: WYOMING

Latitude: 3930 Feet South of 37 Deg. 32 Min. 30 Sec.  
Longitude: 3070 Feet West of 81 Deg. 32 Min. 30 Sec.

Office of Oil & Gas  
Permitting

OCT 19 1999

WV Division of  
Environmental Protection

Company: CDX Gas, LLC  
P.O. Box 609  
Pineville, WV 24874

Manager: Joe Zupanick

Inspector: OFIE HELMICK  
Permit Issued: 11/4/98  
Well Work commenced: 4/21/99  
Well Work completed: 4/28/99  
Verbal plugging  
Permission granted on:  
Rotary  Cable \_\_\_\_\_ Rig  
Total depth (ft) 775.98  
Fresh water depths (ft) N/A  
Salt water depths (ft) N/A  
Is coal being mined in the area (Y/N)? Y  
Coal depths (ft): 65.5', 150', 167.5', 497.5', 536', 564.5'

Casing & Tubing Size	Used in Drilling	Left in Well	Cement Fill up
13 5/8"	20'	20'	5
9 5/8"	770.85	770.85	241
7"	807'	807'	121

\* Borehole drilled under WVDEP Permit O-4010-97 & NPDES WV090000

OPEN FLOW DATA

Producing formation Pocahontas No. 3 Seam & Penn Coals Pay zone depth (ft) \_\_\_\_\_  
Gas: Initial open flow N/A Mcf/d Oil: Initial open flow \_\_\_\_\_ Bbl/d  
Final open flow N/A Mcf/d Final open flow \_\_\_\_\_ Bbl/d  
Time of open flow between initial and final tests: \_\_\_\_\_ hours  
Static rock pressure \_\_\_\_\_ psig (surface pressure) after \_\_\_\_\_ hours

Second Producing formation \_\_\_\_\_ Pay zone depth (ft) \_\_\_\_\_  
Gas: Initial open flow N/A Mcf/d Oil: Initial open flow \_\_\_\_\_ Bbl/d  
Final open flow N/A Mcf/d Final open flow \_\_\_\_\_ Bbl/d  
Time of open flow between initial and final tests: \_\_\_\_\_ hours  
Static rock pressure \_\_\_\_\_ psig (surface pressure) after \_\_\_\_\_ hours

Note: ON BACK OF THIS FORM, PUT THE FOLLOWING: 1) DETAILS OF PERFORATED INTERVALS, FRACTURING OR STIMULATING, PHYSICAL CHANGE, ETC. 2) THE WELL LOG WHICH IS A SYSTEMATICK DETAILED GEOLOGICAL RECORD OF ALL FORMATIONS, INCLUDING COAL ENCOUNTERED BY THE WELLBORE.

For: CDX Gas, LLC  
By: J.A. Zupanick  
Date: 9/28/99

OCT 25 1999

WYO 1773 C

Operator: 8HI-1a  
APINo. 47-109-1773C  
Location: Pineville

Details of Perforated Intervals, Fracturing or Stimulation, Physical Change, Etc.

Well Log & Geologic Record ?

Formation	Top	Bottom
Sandy Shale	0	65.5
Coal	65.5	68
Sandy Shale	68	150
Coal	150	151
Sandy Shale	151	167.5
Coal	167.5	169.5
Sandy Shale	169.5	252
Shale	252	267
Sandy Shale	267	497.5
Coal	497.5	499
Sandy Shale	499	536
Coal	536	537
Sandy Shale	537	564.5
Coal	564.5	567
Sandy Shale	567	712
Sandstone	712	758
Sandy Shale	758	775.98

REGISTRY  
Office of Oil & Gas  
Permitting  
OCT 19 1999  
WV Division of  
Environmental Protection