

POCAHONTAS LAND COORDINATES

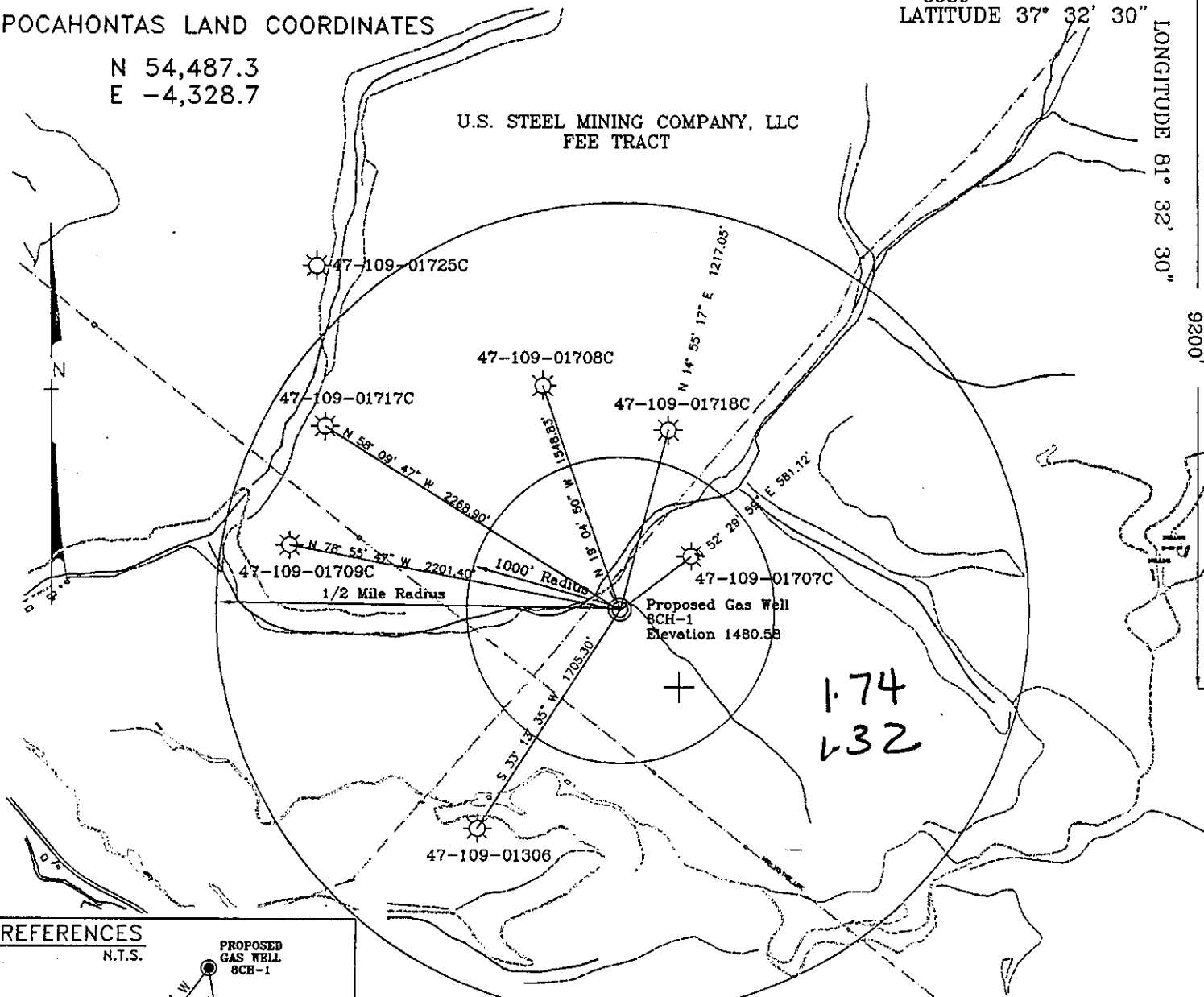
N 54,487.3
E -4,328.7

6950'
LATITUDE 37° 32' 30"

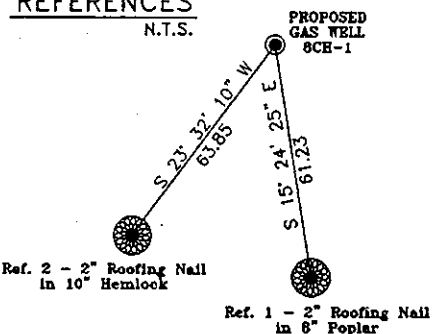
LONGITUDE 81° 32' 30"

9200'

U.S. STEEL MINING COMPANY, LLC
FEE TRACT



REFERENCES
N.T.S.

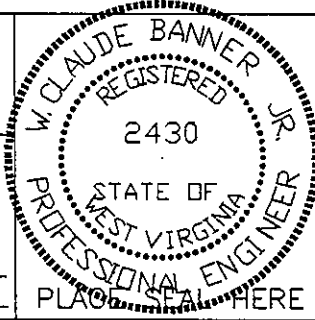


Note: No known domestic water supplies within 1000 feet.
(+) Denotes location of well on USGS map.

FILE No. CDX
DRAWING NAME \PLAT\8CH-1
SCALE 1" = 1000'
MINIMUM DEGREE OF ACCURACY 1 : 2500
PROVEN SOURCE OF ELEVATION USGS B.M. F44
EL. 1565

I THE UNDERSIGNED, HEREBY CERTIFY THAT THIS PLAT IS CORRECT TO THE BEST OF MY KNOWLEDGE AND BELIEF AND SHOWS ALL THE INFORMATION REQUIRED BY LAW AND THE REGULATIONS ISSUED AND PRESCRIBED BY THE DEPARTMENT OF MINES.

(SIGNED) W. Claude Banner Jr.
R.P.E. _____ R.P.S. _____



STATE OF WEST VIRGINIA
DIVISION OF ENVIRONMENTAL PROTECTION
OFFICE OF OIL AND GAS
NITRO, WV

DATE AUGUST 14 19 98
OPERATOR'S WELL No. 8CH-1
API WELL No. 47 - 109 - 01772C
STATE COUNTY PERMIT

WELL TYPE: OIL GAS CBM LIQUID INJECTION WASTE DISPOSAL
(IF "GAS") PRODUCTION X STORAGE DEEP SHALLOW
LOCATION: ELEVATION 1480.58 WATER SHED NANCY FORK OF INDIAN CREEK
DISTRICT CENTER COUNTY WYOMING
QUADRANGLE PINEVILLE, WV

SURFACE OWNER U.S. STEEL MINING COMPANY, LLC ACREAGE 37977.66
CBM ROYALTY OWNER U.S. STEEL MINING COMPANY, LLC LEASE ACREAGE _____
LEASE No. _____

PROPOSED WORK: DRILL X CONVERT DRILL DEEPER REDRILL FRACTURE OR
STIMULATE PLUG OFF OLD FORMATION PERFORATE NEW
FORMATION OTHER PHYSICAL CHANGE IN WELL (SPECIFY)

PLUG AND ABANDON CLEAN OUT AND REPLUG
TARGET FORMATION POCAHONTAS NO. 3 ESTIMATED DEPTH 658'
WELL OPERATOR CDX GAS, LLC MANAGER JOSEPH ZUPANICK
ADDRESS P.O. BOX 609 ADDRESS P.O. BOX 609
PINEVILLE, WV 24874 PINEVILLE, WV 24874

WYO 1772 C

MP ✓

State of West Virginia
Division of Environmental Protection
Section of Oil & Gas

Well Operator's Report of Well Work

Farm name: U.S. Steel Mining Company

Operator Well No: 8CH-1

Location: Elevation: 1480.58'

Quadrangle: Pineville

District: Center

County: WYOMING

Latitude: 6950 Feet South of 37 Deg. 32 Min. 30 Sec.
Longitude: 9200 Feet West of 81 Deg. 32 Min. 30 Sec.

RECEIVED
Office of Oil & Gas
Office of Chief
SEP 20 2004
WV Department of
Environmental Protection

Company: CDX Gas, LLC
P.O. Box 609
Pineville, WV 24874

Agent: JOSEPH A. ZUPANICK

Inspector: Ronnie Scott
Permit Issued: 11/4/98
Well Work commenced: 11/12/98
Well Work completed: 1/12/99
Verbal plugging
Permission granted on:
Rotary x Cable _____ Rig
Total depth (ft) 715'
Fresh water depths (ft) N/A
Salt water depths (ft) N/A
Is coal being mined in the area (Y/N)? Y
Coal depths (ft): 662'-667' and 603-607'

Casing & Tubing Size	Used in Drilling	Left in Well	Cement Fill up
16"	15	15	11.7cuft
11 3/4"	601	601	285cuft
8 5/8"	735'	735'	22.2cuft

OPEN FLOW DATA

Producing formation POCA NO.3 Pay zone depth (ft) 662'-667'
 Gas: Initial open flow N/A Mcf/d Oil: Initial open flow _____ Bbl/d
 Final open flow N/A Mcf/d Final open flow _____ Bbl/d
 Time of open flow between initial and final tests: _____ hours
 Static rock pressure _____ psig (surface pressure) after _____ hours

Second Producing formation _____ Pay zone depth (ft) _____
 Gas: Initial open flow _____ Mcf/d Oil: Initial open flow _____ Bbl/d
 Final open flow _____ Mcf/d Final open flow _____ Bbl/d
 Time of open flow between initial and final tests: _____ hours
 Static rock pressure _____ psig (surface pressure) after _____ hours

Note: ON BACK OF THIS FORM, PUT THE FOLLOWING: 1) DETAILS OF PERFORATED INTERVALS, FRACTURING OR STIMULATING, PHYSICAL CHANGE, ETC. 2) THE WELL LOG WHICH IS A SYSTEMATICK DETAILED GEOLOGICAL RECORD OF ALL FORMATIONS, INCLUDING COAL ENCOUNTERED BY THE WELLBORE.

CHARLES AKERS J
For: CDX Gas, LLC
By: *Charles Akers*
Date: 9/17/04

WYO 1772 C



Details of Perforated Intervals, Fracturing or Stimulation, Physical Change, Etc.

N/A

Well Log & Geologic Record - Depths from G.L.

Formation	Top	Bottom
Sandstone	0	45
Hard Sandstone	45	123
Shaley Sand	123	190
Sandstone	190	221
Shaley Sand	221	313
Coal & Shale	313	319
Sandy Shale	319	376
Quartz Sand	376	495
Shaley Sand	495	603
Coal P-4	603	607
Shale	607	662
Coal P-3	662	667
Shale	667	715
End		