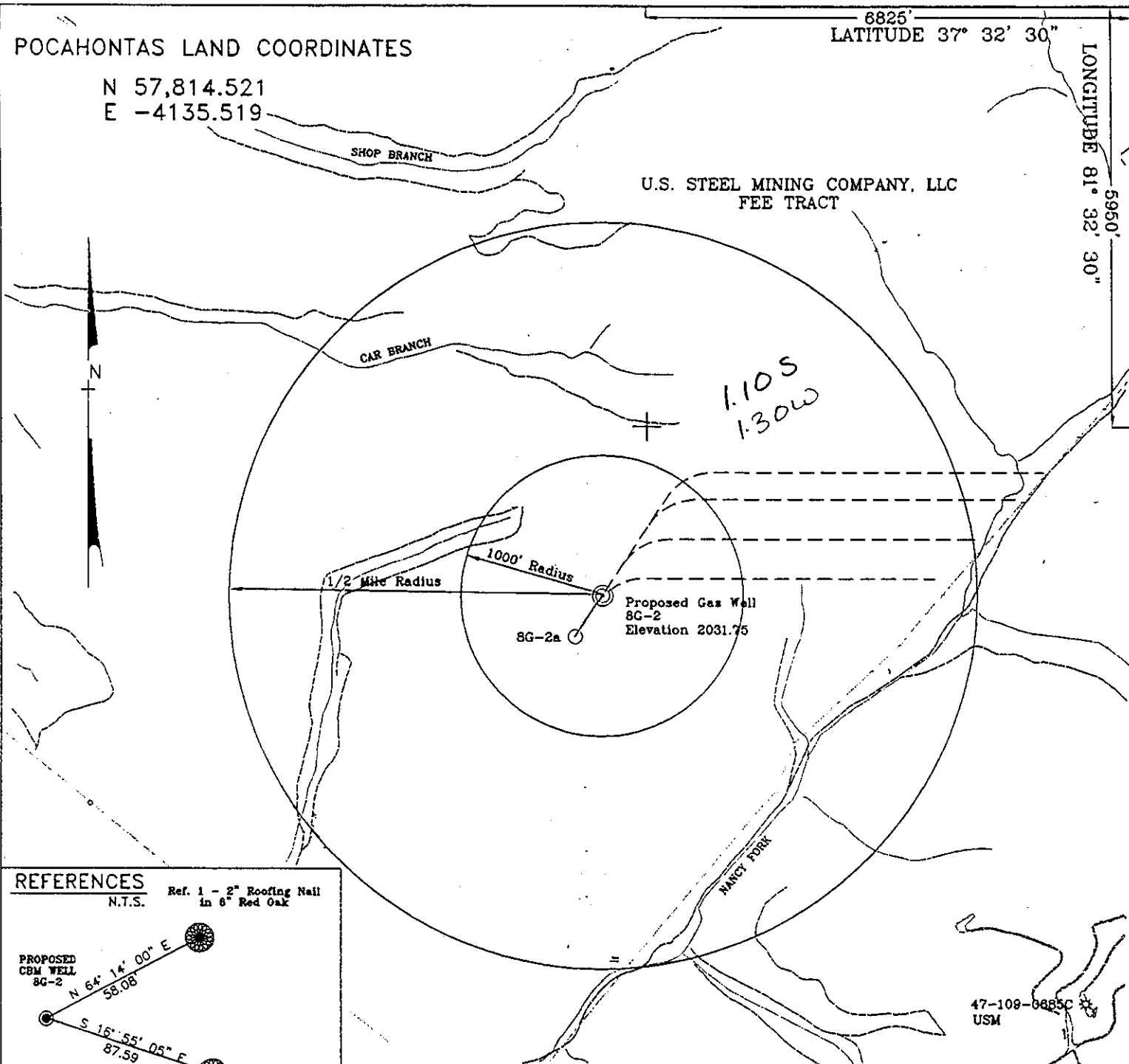


POCAHONTAS LAND COORDINATES

N 57,814.521
E -4135.519

8825'
LATITUDE 37° 32' 30"

LONGITUDE 81° 32' 30"

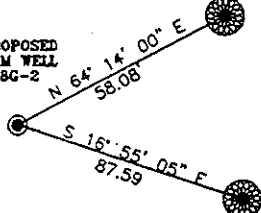


U.S. STEEL MINING COMPANY, LLC
FEE TRACT

REFERENCES

Ref. 1 - 2" Roofing Nail
in 6" Red Oak

PROPOSED
CBM WELL
8G-2



Ref. 2 - 2" Roofing Nail
in 10" White Oak

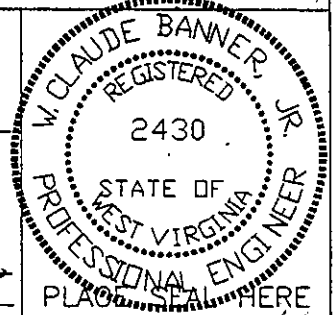
Note: No known domestic water supplies within 1000 feet.
(+) Denotes location of well on USGS map.

47-109-6885C
USM

FILE No. CDX
DRAWING NAME \PLAT\8G-2
SCALE 1" = 1000'
MINIMUM DEGREE OF ACCURACY 1 : 2500
PROVEN SOURCE OF ELEVATION USGS B.M. F44
EL. 1565

I THE UNDERSIGNED, HEREBY CERTIFY THAT THIS PLAT IS CORRECT TO THE BEST OF MY KNOWLEDGE AND BELIEF AND SHOWS ALL THE INFORMATION REQUIRED BY LAW AND THE REGULATIONS ISSUED AND PRESCRIBED BY THE DEPARTMENT OF MINES.

(SIGNED) W. Claude Banner, Jr.
R.P.E. _____ R.P.S. _____



STATE OF WEST VIRGINIA
DIVISION OF ENVIRONMENTAL PROTECTION
OFFICE OF OIL AND GAS
NITRO, WV

DATE JUNE 10 19 98
OPERATOR'S WELL No. 8G-2
API WELL No. 47 - 109 - 01757C

WELL TYPE: OIL GAS CBM LIQUID INJECTION WASTE DISPOSAL
(IF "GAS") PRODUCTION STORAGE DEEP SHALLOW
LOCATION: ELEVATION 2031.75 WATER SHED UNNAMED TRIBUTARY OF NANCY FORK
DISTRICT CENTER COUNTY WYOMING
QUADRANGLE PINEVILLE, WV

SURFACE OWNER U.S. STEEL MINING COMPANY, LLC ACREAGE 37977.66
CBM ROYALTY OWNER U.S. STEEL MINING COMPANY, LLC LEASE ACREAGE _____

PROPOSED WORK: DRILL CONVERT DRILL DEEPER REDRILL FRACTURE OR STIMULATE PLUG OFF OLD FORMATION PERFORATE NEW FORMATION OTHER PHYSICAL CHANGE IN WELL (SPECIFY) 6-6

PLUG AND ABANDON CLEAN OUT AND REPLUG
TARGET FORMATION POCAHONTAS NO. 3 ESTIMATED DEPTH 1207.75'
WELL OPERATOR CDX GAS, LLC DESIGNATED AGENT JOSEPH ZUPANICK
ADDRESS P.O. BOX 609 ADDRESS P.O. BOX 609
PINEVILLE, WV 24874 PINEVILLE, WV 24874

WYO 1757C

WR-35

28 August 98
API # 47-109-01725C

-01757C

State of West Virginia
Division of Environmental Protection
Section of Oil & Gas

Well Operator's Report of Well Work

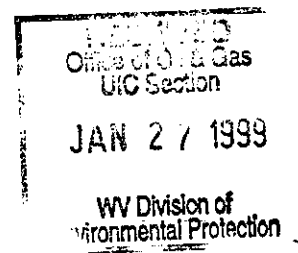
Farm name: U.S. Steel Mining Company, LLC Operator Well No: 8G-2

Location: Elevation: 1,969.75 Quadrangle: PINEVILLE

District: CENTER County: WYOMING

Latitude: 5825 Feet South of 37 Deg. 32 Min. 30 Sec.
Longitude: 7660 Feet West of 81 Deg. 32 Min. 30 Sec.

Company: CDX Gas, LLC
P.O. Box 609
Pineville, WV 24874



Agent: Joe Zupanick

Inspector: OFIE HELMICK
Permit Issued: 08/28/98
Well Work commenced: 09/22/98
Well Work completed: 09/26/98
Verbal plugging
Permission granted on:
Rotary Cable _____ Rig _____
Total depth (ft) 1173.10
Fresh water depths (ft) N/A
Salt water depths (ft) N/A
Is coal being mined in the area (Y/N)? Y
Coal depths (ft): 1156-1160.5 Poca No. 3 seam

Casing & Tubing Size	Used in Drilling	Left in Well	Cement Fill up
13 5/8"	20'	20'	12 ft ³
9 5/8"	353'	353'	110 ft ³
7"	1147'	1147'	173 ft ³
2 7/8"	1156'	1156'	

OPEN FLOW DATA

Producing formation Pocahontas No. 3 Seam Pay zone depth (ft) _____
Gas: Initial open flow N/A Mcf/d Oil: Initial open flow _____ Bbl/d
Final open flow N/A Mcf/d Final open flow _____ Bbl/d
Time of open flow between initial and final tests: _____ hours
Static rock pressure _____ psig (surface pressure) after _____ hours

Second Producing formation _____ Pay zone depth (ft) _____
Gas: Initial open flow N/A Mcf/d Oil: Initial open flow _____ Bbl/d
Final open flow N/A Mcf/d Final open flow _____ Bbl/d
Time of open flow between initial and final tests: _____ hours
Static rock pressure _____ psig (surface pressure) after _____ hours

Note: ON BACK OF THIS FORM, PUT THE FOLLOWING: 1) DETAILS OF PERFORATED INTERVALS, FRACTURING OR STIMULATING, PHYSICAL CHANGE, ETC. 2) THE WELL LOG WHICH IS A SYSTEMATICK DETAILED GEOLOGICAL RECORD OF ALL FORMATIONS, INCLUDING COAL ENCOUNTERED BY THE WELLBORE.

For: CDX Gas, LLC
By: _____
Date: _____

WYO 1757C

Operator: 8G-2
API No. 47-109-01757 C
Location: Pineville

Details of Perforated Intervals, Fracturing or Stimulation, Physical Change, Etc.

Well Log & Geologic Record

Formation	Top	Bottom
Sandy shale	0	164
Shale	164	198
Sandy shale	198	239
Shale	239	281
Sandy shale	281	357.5
Coal	357.5	360
Sandy shale	360	370
Shale	370	401
Sandy shale	401	637
Shale	637	660
Sandy shale	660	777
Shale	777	802
Sandy shale	802	840
Shale	840	863
Sandy shale	863	910
Sandstone	910	1058
Sandy shale	1058	1085
Coal	1085	1089
Sandy shale	1089	1156
Coal	1156	1160
Sandy shale	1160	1173.10