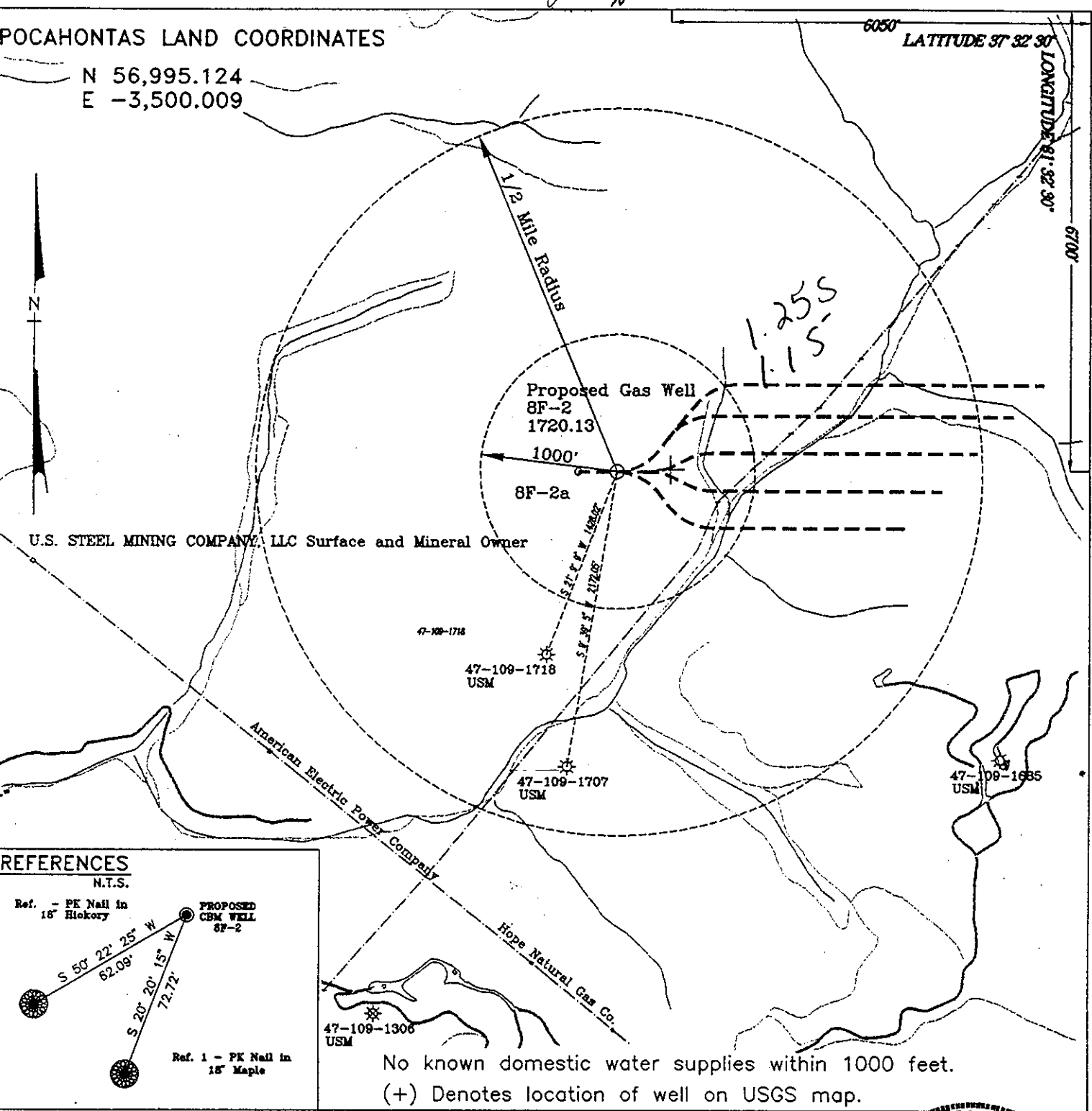


POCAHONTAS LAND COORDINATES

N 56,995.124  
E -3,500.009

6050 LATITUDE 37° 32' 30"

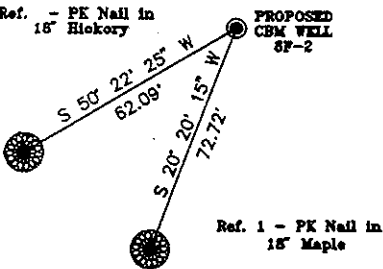
LONGITUDE 81° 32' 30"



U.S. STEEL MINING COMPANY, LLC Surface and Mineral Owner

REFERENCES

N.T.S.



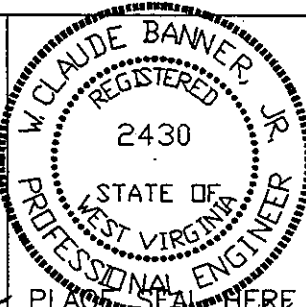
47-109-1306 USM

No known domestic water supplies within 1000 feet.  
(+) Denotes location of well on USGS map.

FILE No. CDX  
DRAWING NAME PLAT 8F-2  
SCALE 1" = 1000'  
MINIMUM DEGREE OF ACCURACY 1 : 2500  
PROVEN SOURCE OF ELEVATION USGS B.M. F44  
EL. 1565

I THE UNDERSIGNED, HEREBY CERTIFY THAT THIS PLAT IS CORRECT TO THE BEST OF MY KNOWLEDGE AND BELIEF AND SHOWS ALL THE INFORMATION REQUIRED BY LAW AND THE REGULATIONS ISSUED AND PRESCRIBED BY THE DEPARTMENT OF MINES.

(SIGNED) W. Claude Banner, Jr.  
R.P.E. \_\_\_\_\_ R.P.S. \_\_\_\_\_



STATE OF WEST VIRGINIA  
DIVISION OF ENVIRONMENTAL PROTECTION  
OFFICE OF OIL AND GAS  
NITRO, WV

DATE JUNE 3 19 98  
OPERATOR'S WELL No. 8F-2  
API WELL No. 47 - 109 - 01750C  
STATE COUNTY PERMIT 39370126

WELL TYPE: OIL GAS CBM LIQUID INJECTION WASTE DISPOSAL  
(IF "GAS") PRODUCTION X STORAGE DEEP SHALLOW

LOCATION: ELEVATION 1720.13 WATER SHED UNNAMED TRIBUTARY OF NANCY FORK  
DISTRICT CENTER COUNTY WYOMING  
QUADRANGLE PINEVILLE, WV

SURFACE OWNER U.S. STEEL MINING COMPANY, LLC ACREAGE 37977.66  
CBM ROYALTY OWNER U.S. STEEL MINING COMPANY, LLC LEASE ACREAGE \_\_\_\_\_  
LEASE No. \_\_\_\_\_

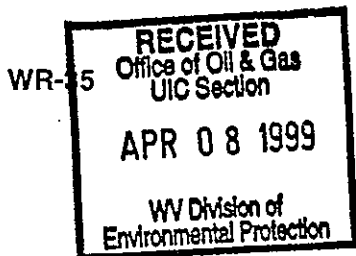
PROPOSED WORK: DRILL X CONVERT DRILL DEEPER REDRILL FRACTURE OR STIMULATE \_\_\_\_\_ PLUG OFF OLD FORMATION PERFORATE NEW FORMATION \_\_\_\_\_ OTHER PHYSICAL CHANGE IN WELL (SPECIFY) \_\_\_\_\_

PLUG AND ABANDON \_\_\_\_\_ CLEAN OUT AND REPLUG \_\_\_\_\_

TARGET FORMATION POCAHONTAS NO. 3 ESTIMATED DEPTH 885.13

WELL OPERATOR CDX Gas, LLC DESIGNATED AGENT JOSEPH ZUPANICK  
ADDRESS P.O. BOX 609 ADDRESS P.O. BOX 609  
PINEVILLE, WV 24874 PINEVILLE, WV 24874

WYO 1750 C



Aug. 22-98  
API# 47-109-01750 C

State of West Virginia  
Division of Environmental Protection  
Section of Oil & Gas

Well Operator's Report of Well Work

Farm name: U.S. Steel Mining Company, LLC Operator Well No: 8F-2  
 Location: Elevation: 1,720.13 Quadrangle: PINEVILLE  
 District: CENTER County: WYOMING  
 Latitude: 6700 Feet South of 37 Deg. 32 Min. 30 Sec.  
 Longitude: 6050 Feet West of 81 Deg. 32 Min. 30 Sec.

Company: CDX Gas, LLC  
P.O. Box 609  
Pineville, WV 24874

Agent: Joe Zupanick

Inspector: OFIE HELMICK  
 Permit Issued: 8/22/98  
 Well Work commenced: \*7/30/98  
 Well Work completed: 10/10/98  
 Verbal plugging  
 Permission granted on:  
 Rotary  Cable  Rig  
 Total depth (ft) 947.16  
 Fresh water depths (ft) N/A  
 Salt water depths (ft) N/A  
 Is coal being mined in the area (Y/N)?  
 Coal depths (ft): Poca No. 3 892-897

Casing & Tubing Size	Used in Drilling	Left in Well	Cement Fill up
13 3/8"	20'	20'	5
9 5/8"	685'	685'	215
7"	300'	300'	45

\*Borehole drilled under WVDEP Permit O-4017-92 & NPDES WV0090000

OPEN FLOW DATA

Producing formation Pocahontas No. 3 Seam Pay zone depth (ft) \_\_\_\_\_  
 Gas: Initial open flow N/A Mcf/d Oil: Initial open flow \_\_\_\_\_ Bbl/d  
 Final open flow N/A Mcf/d Final open flow \_\_\_\_\_ Bbl/d  
 Time of open flow between initial and final tests: \_\_\_\_\_ hours  
 Static rock pressure \_\_\_\_\_ psig (surface pressure) after \_\_\_\_\_ hours

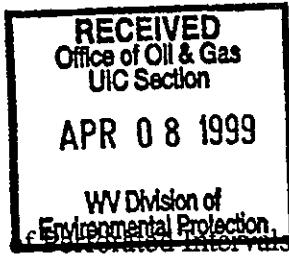
Second Producing formation \_\_\_\_\_ Pay zone depth (ft) \_\_\_\_\_  
 Gas: Initial open flow N/A Mcf/d Oil: Initial open flow \_\_\_\_\_ Bbl/d  
 Final open flow N/A Mcf/d Final open flow \_\_\_\_\_ Bbl/d  
 Time of open flow between initial and final tests: \_\_\_\_\_ hours  
 Static rock pressure \_\_\_\_\_ psig (surface pressure) after \_\_\_\_\_ hours

Note: ON BACK OF THIS FORM, PUT THE FOLLOWING: 1) DETAILS OF PERFORATED INTERVALS, FRACTURING OR STIMULATING, PHYSICAL CHANGE, ETC. 2) THE WELL LOG WHICH IS A SYSTEMATICK DETAILED GEOLOGICAL RECORD OF ALL FORMATIONS, INCLUDING COAL ENCOUNTERED BY THE WELLBORE.

For: CDX Gas, LLC  
 By: J. A. Zupanick  
 Date: 4/5/99

WV0 1750C

AUG 30 1999



Operator: 8F-2  
 API No. 47-109-01750 C  
 Location: Pineville

Details of Corrosion, Fracturing or Stimulation, Physical Change, Etc.

Well Log & Geologic Record

Gas Well 8F-2

Formation	Top	Bottom
Sandy Shale	0	90
Shale	90	111
Sandy shale	111	127
Coal	127	130
Sandy Shale	130	363
Shale	363	386
Sandy Shale	386	394
Sandstone	394	462
Sandy Shale	462	501
Sandstone	501	535
Sandy Shale	535	562
Sandstone	562	579
Sandy Shale	579	632
Sandstone	632	730
Sandy Shale	730	832
Coal	832	836
Sandy shale	836	892
Coal	892	897
Sandy Shale	897	947.16