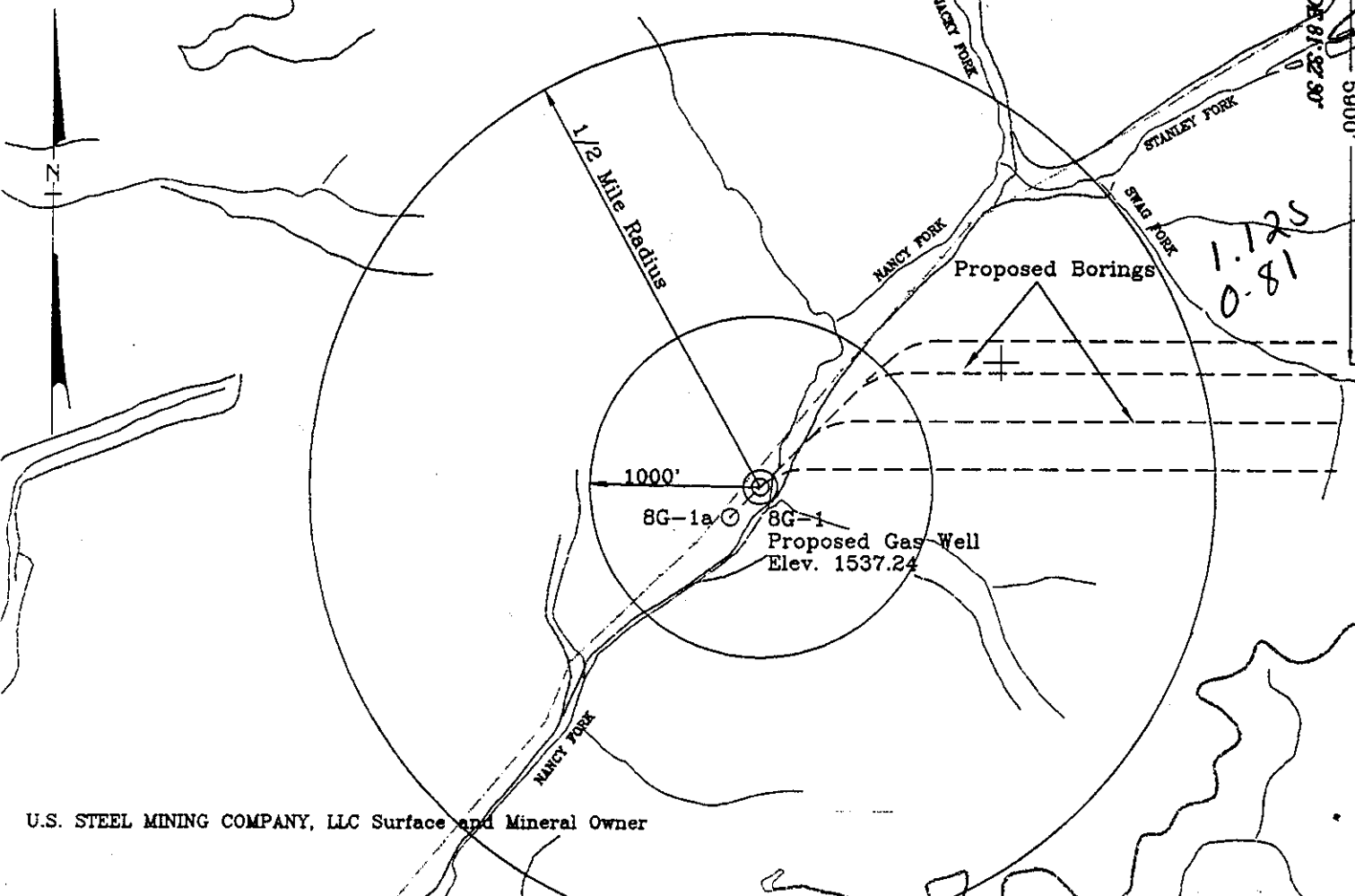


POCAHONTAS LAND COORDINATES

N 57,796.66
E -1,658.163

4250' LATITUDE 37° 32' 30"

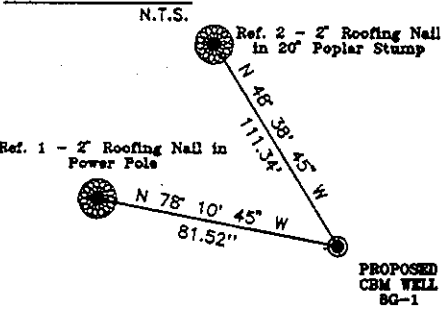
LONGITUDE 81° 52' 30"



U.S. STEEL MINING COMPANY, LLC Surface and Mineral Owner

1.125
0.81

REFERENCES



Note: No known domestic water supplies within 100 feet.
(+) Denotes location of well on USGS map.

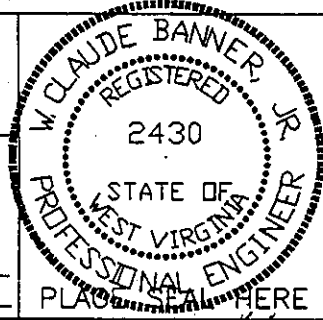
47-109-0686C USM

47-109-1522 USM

FILE No. CDX
DRAWING NAME \PLAT\8G-1
SCALE 1" = 1000'
MINIMUM DEGREE OF ACCURACY 1 : 2500
PROVEN SOURCE OF ELEVATION USGS B.M. F44
EL. 1565

I THE UNDERSIGNED, HEREBY CERTIFY THAT THIS PLAT IS CORRECT TO THE BEST OF MY KNOWLEDGE AND BELIEF AND SHOWS ALL THE INFORMATION REQUIRED BY LAW AND THE REGULATIONS ISSUED AND PRESCRIBED BY THE DEPARTMENT OF MINES.

(SIGNED) W. Claude Banner Jr.
R.P.E. _____ R.P.S. _____



STATE OF WEST VIRGINIA
DIVISION OF ENVIRONMENTAL PROTECTION
OFFICE OF OIL AND GAS
NITRO, WV

DATE JUNE 10 19 98
OPERATOR'S WELL No. 8G-1
API WELL No. 47 - 109 - 01749C
STATE COUNTY PERMIT

WELL TYPE: OIL GAS CBM LIQUID INJECTION WASTE DISPOSAL
(IF "GAS") PRODUCTION X STORAGE DEEP SHALLOW
LOCATION: ELEVATION 1537.24 WATER SHED NANCY FORK OF INDIAN CREEK
DISTRICT CENTER COUNTY WYOMING
QUADRANGLE PINEVILLE, WV

SURFACE OWNER U.S. STEEL MINING COMPANY, LLC ACREAGE 37977.66
CBM ROYALTY OWNER U.S. STEEL MINING COMPANY, LLC LEASE ACREAGE _____
LEASE No. _____

PROPOSED WORK: DRILL X CONVERT DRILL DEEPER REDRILL FRACTURE OR STIMULATE PLUG OFF OLD FORMATION PERFORATE NEW FORMATION OTHER PHYSICAL CHANGE IN WELL (SPECIFY) _____

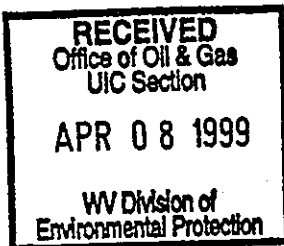
PLUG AND ABANDON _____ CLEAN OUT AND REPLUG _____
TARGET FORMATION POCAHONTAS NO. 3
WELL OPERATOR CDX GAS, LLC
ADDRESS P.O. Box 609
Pineville, WV 24874

ESTIMATED DEPTH 667.24'
DESIGNATED AGENT JOSEPH ZUPANICK
ADDRESS P.O. Box 609
Pineville, WV 24874

66 272

WYO 1749 C

WR-35



Aug. 06-98
API# 47-109-01749 C

State of West Virginia
Division of Environmental Protection
Section of Oil & Gas

Reviewed _____

Well Operator's Report of Well Work

Farm name: U.S. Steel Mining Company, LLC

Operator Well No: 8FG-1

Location: Elevation: 1,782.77

Quadrangle: PINEVILLE

District: CENTER

County: WYOMING

Latitude: 3500 Feet South of 37 Deg. 32 Min. 30 Sec.
Longitude: 2100 Feet West of 81 Deg. 32 Min. 30 Sec.

Company: CDX Gas, LLC
P.O. Box 609
Pineville, WV 24874

Agent: Joe Zupanick

Inspector: OFIE HELMICK
Permit issued: 8/06/98
Well Work commenced: 10/02/98
Well Work completed: 11/30/98
Verbal plugging
Permission granted on: _____
Rotary Cable _____ Rig
Total depth (ft) 934.72
Fresh water depths (ft) N/A
Salt water depths (ft) N/A
Is coal being mined in the area (Y/N)? _____
Coal depths (ft): Poca No. 3 Seam 899-903

Casing & Tubing Size	Used in Drilling	Left in Well	Cement Fill up
13 5/8"	18'	18'	5 ft ³
9 5/8"	348'	348'	109 ft ³
7"	575'	575'	86 ft ³

OPEN FLOW DATA

Producing formation Pocahontas No. 3 Seam Pay zone depth (ft) _____
 Gas: Initial open flow N/A Mcf/d Oil: Initial open flow _____ Bbl/d
 Final open flow N/A Mcf/d Final open flow _____ Bbl/d
 Time of open flow between initial and final tests: _____ hours
 Static rock pressure _____ psig (surface pressure) after _____ hours

Second Producing formation _____ Pay zone depth (ft) _____
 Gas: Initial open flow N/A Mcf/d Oil: Initial open flow _____ Bbl/d
 Final open flow N/A Mcf/d Final open flow _____ Bbl/d
 Time of open flow between initial and final tests: _____ hours
 Static rock pressure _____ psig (surface pressure) after _____ hours

Note: ON BACK OF THIS FORM, PUT THE FOLLOWING: 1) DETAILS OF PERFORATED INTERVALS, FRACTURING OR STIMULATING, PHYSICAL CHANGE, ETC. 2) THE WELL LOG WHICH IS A SYSTEMATICK DETAILED GEOLOGICAL RECORD OF ALL FORMATIONS, INCLUDING COAL ENCOUNTERED BY THE WELLBORE.

For: CDX Gas, LLC
By: J. A. Zupanick
Date: 4/5/99

AUG 30 1999

WYO 1749 C

Operator: 8FG-1
API No. 47-109-01749 C
Location: Pineville

Details of Perforated Intervals, Fracturing or Stimulation, Physical Change, Etc.

Well Log & Geologic Record

Formation	Top	Bottom
Sandy Shale	0	66
Shale	66	116
Sandy Shale	116	123
Coal	123	126
Sandy Shale	126	211
Shale	211	227
Sandy Shale	227	303
Sandstone	303	345
Sandy Shale	345	462
Shale	462	478
Sandy Shale	478	538
Sandstone	538	552
Sandy Shale	552	609
Sandstone	609	726
Sandy Shale	726	754
Sandstone	754	776
Sandy Shale	776	838
Coal	838	842
Sandy Shale	842	899
Coal	899	903
Sandy Shale	903	934.72