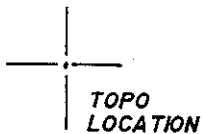


LATITUDE 37°45'00"

POCAHONTAS LAND CORPORATION
ORDER BOOK 38/385

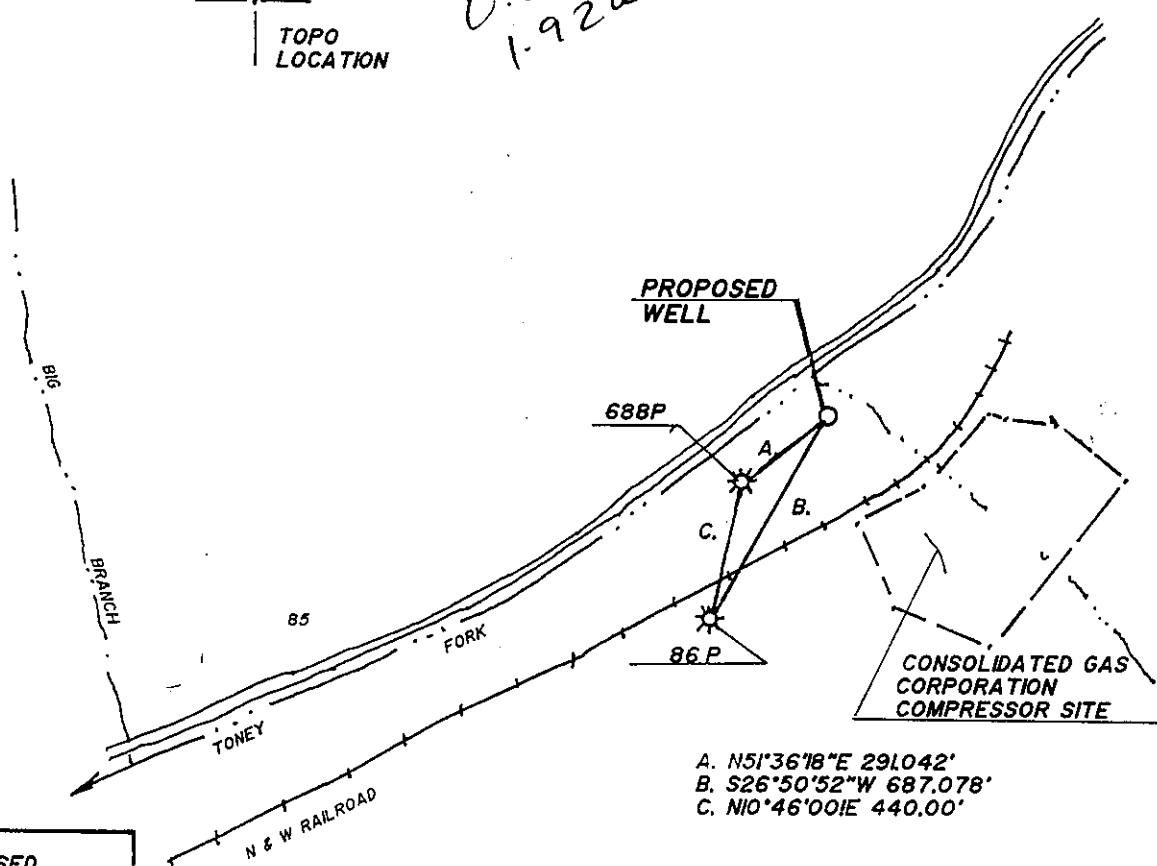


0.675
1.92W

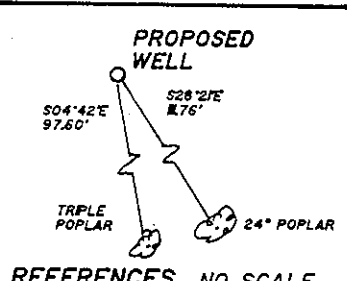
LONGITUDE 81°32'30"

3550'

NORTH



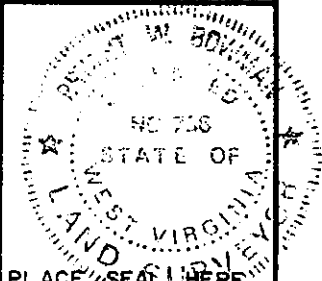
A. N51°36'18"E 291.042'
B. S26°50'52"W 687.078'
C. N10°46'00"E 440.00'



REFERENCES NO SCALE

FILE NO. _____
DRAWING NO. _____
SCALE 1"=500'
MINIMUM DEGREE OF ACCURACY 1/5000
PROVEN SOURCE OF ELEVATION EXISTING WELL 86P ELEVATION 1638

I THE UNDERSIGNED, HEREBY CERTIFY THAT THIS PLAT IS CORRECT TO THE BEST OF MY KNOWLEDGE AND BELIEF AND SHOWS ALL THE INFORMATION REQUIRED BY LAW AND THE REGULATIONS ISSUED AND PRESCRIBED BY THE DEPARTMENT OF MINES.
(SIGNED) L. J. BROWN
R.P.E. _____ L.L.S. 736



(+) DENOTES LOCATION OF WEST VIRGINIA DIVISION OF ENVIRONMENTAL PROTECTION OFFICE OF OIL AND GAS #10 McJUNKIN ROAD NITRO, WEST VIRGINIA 25143-2506



DATE JUNE 2 19 98
OPERATOR'S WELL NO. 46C
API WELL NO. 47-109-01746C
STATE COUNTY PERMIT

WELL TYPE: OIL _____ GAS X LIQUID INJECTION _____ WASTE DISPOSAL _____
(IF "GAS", PRODUCTION X STORAGE _____ DEEP _____ SHALLOW _____
LOCATION: ELEVATION 1580 WATER SHED TONEY FORK
DISTRICT OCEANA COUNTY WYOMING
QUADRANGLE MATHENY, WV 7.5'
SURFACE OWNER POCAHONTAS LAND CORPORATION ACREAGE 34586+
OIL & GAS ROYALTY OWNER POCAHONTAS LAND CORPORATION LEASE ACREAGE 34586+
LEASE NO. _____
PROPOSED WORK: DRILL X CONVERT _____ DRILL DEEPER _____ REDRILL _____ FRACTURE OR STIMULATE _____ PLUG OFF OLD FORMATION _____ PERFORATE NEW FORMATION _____ OTHER PHYSICAL CHANGE IN WELL (SPECIFY) _____
PLUG AND ABANDON _____ CLEAN OUT AND REPLUG _____
TARGET FORMATION Beckley, Fire Creek, Poca 6,5,4 ESTIMATED DEPTH 1400'
WELL OPERATOR PENN VIRGINIA OIL & GAS CORP DESIGNATED AGENT MR. HARRY JEWEL JUL 20 1998
ADDRESS 999 EXECUTIVE PARK BLVD., SUITE 300 ADDRESS PO BOX 460
KINGSFORD, TN 37660 RAVENCLIFF, WV 25913

WYO 1746C

Charleston, WV

WR-35

16-Jul-98
API # 47-109-01746 C

State of West Virginia
Division of Environmental Protection
Section of Oil and Gas

Reviewed

Well Operator's Report of Well Work

Farm name: POCAHONTAS LAND CORP Operator Well No.: 46C

MAY 21 1999

LOCATION: Elevation: 1,580.00 Quadrangle: MATHENY

District: OCEANA County: WYOMING
Latitude: 3550 Feet South of 37 Deg. 45Min. 0 Sec.
Longitude 10180 Feet West of 81 Deg. 32 Min. 30 Sec.

Company: PENN VIRGINIA OIL AND GAS
999 EXEC. PARK BLVD., STE. 300
KINGSPORT, TN 37660-0000

Agent: HARRY JEWELL, III

Inspector: OFIE HELMICK
Permit Issued: 07/16/98
Well work Commenced: 10/07/98
Well work Completed: 11/24/98
Verbal Plugging
Permission granted on: _____
Rotary Cable _____ Rig
Total Depth (feet) 1341'
Fresh water depths (ft) 6" stream @ 30'
Damp at 438-441, 1/2" stream at 1100'
Salt water depths (ft) _____

Size	Used in Drilling	Left in Well	Cement Fill Up Cu. Ft.
9 5/8"	48'	48'	59
7"	219'	219'	89
4 1/2"	1330'	1330'	189
2 3/8"		1261	

Is coal being mined in area (Y/N)? N
Coal Depths (ft): _____

OPEN FLOW DATA Lower Poca 4 Coal, Poca 4 Coal,
Poca 4 sand, Fire Creek Coal,
Producing formation Fire Creek Sand, Beckley Coal Pay zone depth (ft) _____
Gas: Initial open flow _____ MCF/d Oil: Initial open flow _____ Bbl/d
Final open flow show MCF/d Final open flow _____ Bbl/d
Time of open flow between initial and final tests _____ Hours
Static rock Pressure N/A psig (surface pressure) after _____ Hours

Second producing formation _____ Pay zone depth (ft) _____
Gas: Initial open flow _____ MCF/d Oil: Initial open flow _____ Bbl/d
Final open flow _____ MCF/d Final open flow _____ Bbl/d
Time of open flow between initial and final tests _____ Hours
Static rock Pressure _____ psig (surface pressure) after _____ Hours

NOTE: ON BACK OF THIS FORM PUT THE FOLLOWING: 1). DETAILS OF PERFORATED INTERVALS, FRACTURING OR STIMULATING, PHYSICAL CHANGE, ETC. 2). THE WELL LOG WHICH IS A SYSTEMATIC DETAILED GEOLOGICAL RECORD OF ALL FORMATIONS, INCLUDING COAL ENCOUNTERED BY THE WELLBORE.

For: PENN VIRGINIA OIL AND GAS CORPORATION

By: William M. Payne
Date: 5/21/99

JUN 14 1999

WYO 1746 C

FORM WR-35R
(REVERSE)

PERMIT #: 47-109-01746 C
WELL#: 46C

DETAILS OF PERFORATIONS, FRACTURING, OR PHYSICAL CHANGE, ETC

Stage 1	Poca 4 Coal & Sand Lower Poca 4 Coal	Perforated the Poca 4 Coal & Sand from 1212' to 1217 with 11 holes and the Lower Poca 4 Coal from 1231' to 1234' with 12 holes. Breakdown with 500 gallons of 7½% HCL acid and water. Treated with 300 bbls of water and 9850 lbs 20/40 sand. ATR: 18.5 BPM ATP: 2000 psi ISIP: 1250 psi
Stage 2	Lower Fire Creek Coal Fire Creek Sand	Perforated the Lower Fire Creek Coal from 1068' to 1071' with 9 holes and the Fire Creek Sand from 1041' to 1051' with 11 holes. Breakdown with 500 gallons of 7½% HCL acid and water. Treated with 305 bbls of water and 14,390 lbs of 20/40 sand. ATR: 17.5 BPM ATP: 2350 psi ISIP: 1163 psi
Stage 3	Lower Beckley Coal	Perforated from 991' to 995' with 20 holes. Breakdown with 500 gallons of 7½% HCL acid and water. Treated with 367 bbls of water and 13,940 lbs of 20/40 sand. ATR: 16 BPM ATP: 2300 psi ISIP: 2000 psi

Put well on pump jack and pump off water.

<u>FORMATIONS</u>	<u>TOP</u>	<u>BOTTOM</u>	<u>REMARKS</u>
Sand & Shale	0	389	Coals @ 376-379, 411-413, 436-441, 799-801
Shale & Coal	389	553	
Sand	553	799	
Coal <i>Sewell (S43)</i>	799	801	
Sand & Shale	801	860	
Sand	860	938	
Shale	938	988	
Coal <i>L. Beckley (S49)</i>	988	995	
Shale	995	1038	
Sand	1038	1068	
Coal <i>L. Fire Creek (S51)</i>	1068	1071	
Sand	1071	1122	
Shale	1122	1162	
Sand	1162	1190	
Sand & Shale	1190	1213	
Coal <i>- Poca 4 (S58)</i>	1213	1214	
Sand & Shale	1214	1231	
Coal <i>Poca 3 2. dm (S60)</i>	1231	1232	
Sand & Shale	1232	1342	No shows reported.