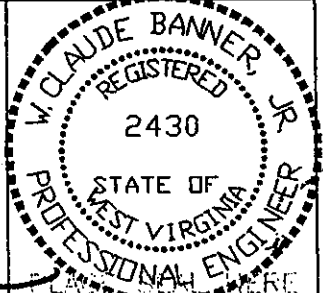


The DW-8B well is an existing well under 47-109-1718C
 No known domestic water supplies within 1000 feet.
 (+) Denotes location of well on USGS map.

FILE No. US-STEEL
 DRAWING NAME \DAVE-TRADER\PLAT
 FILE NAME DW-8B
 SCALE 1" = 1000'
 MINIMUM DEGREE OF ACCURACY 1 : 2500
 PROVEN SOURCE OF ELEVATION BENCH-MARK
F-44 FL. 1565

I THE UNDERSIGNED, HEREBY CERTIFY THAT THIS PLAT IS CORRECT TO THE BEST OF MY KNOWLEDGE AND BELIEF AND SHOWS ALL THE INFORMATION REQUIRED BY LAW AND THE REGULATIONS ISSUED AND PRESCRIBED BY THE DEPARTMENT OF MINES.

(SIGNED) W. Claude Banner, Jr.
 R.P.E. 2430 R.P.S.



STATE OF WEST VIRGINIA
 DIVISION OF ENVIRONMENTAL PROTECTION
 OFFICE OF OIL AND GAS
 NITRO, WV



DATE MAY 22, 2001
 OPERATOR'S WELL No. DW-8B
 API WELL No. 47 - 109 - 01718CW
 STATE COUNTY PERMIT

WELL TYPE: OIL GAS CBM LIQUID INJECTION WASTE DISPOSAL
 (IF "GAS") PRODUCTION X STORAGE DEEP SHALLOW
 LOCATION: ELEVATION 1585.05 WATER SHED NANCY FORK OF INDIAN CREEK
 DISTRICT CENTER COUNTY WYOMING
 QUADRANGLE PINEVILLE, WV

SURFACE OWNER U.S. STEEL MINING COMPANY, LLC ACREAGE 37977.66
 CBM ROYALTY OWNER U.S. STEEL MINING COMPANY, LLC LEASE ACREAGE

LEASE No. _____
 PROPOSED WORK: DRILL CONVERT DRILL DEEPER REDRILL FRACTURE OR STIMULATE PLUG OFF OLD FORMATION PERFORATE NEW FORMATION X OTHER PHYSICAL CHANGE IN WELL (SPECIFY)

PLUG AND ABANDON CLEAN OUT AND REPLUG
 TARGET FORMATION: POCAHONTAS NO. 4 AND NO. 6 SEAMS ESTIMATED DEPTH 740'
 WELL OPERATOR U.S. STEEL MINING COMPANY, LLC DESIGNATED AGENT DAVE TRADER
 ADDRESS P.O. BOX 338 ADDRESS PINEVILLE, WV 24874
PINEVILLE, WV 24874

JUL 06 2001

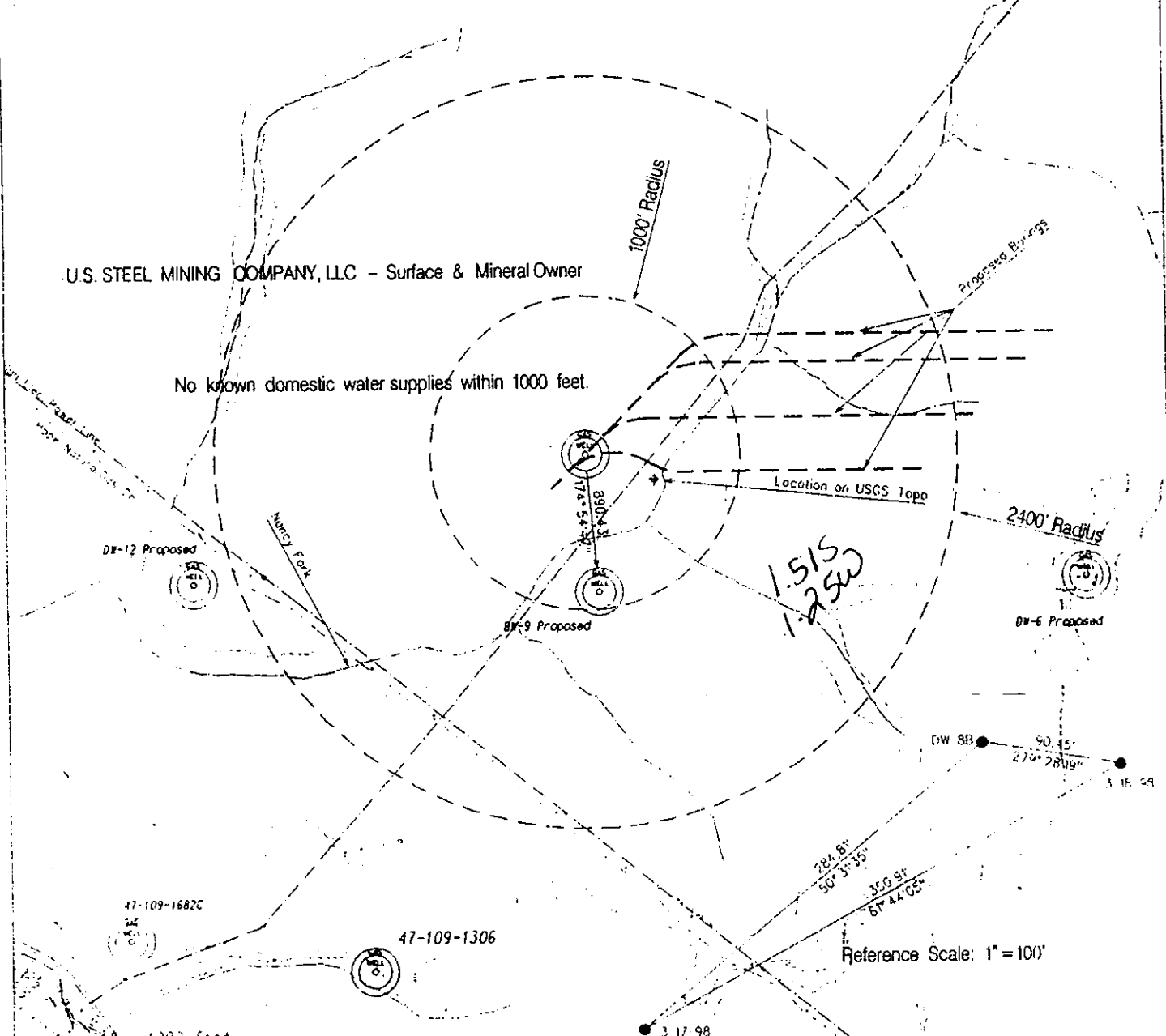
WYO 1718C W

See U.S.G.S. 7-1/2 Pineville WV Quadrangle
Pocahontas Land Coordinates

North: 55727.994
East: -3946.614

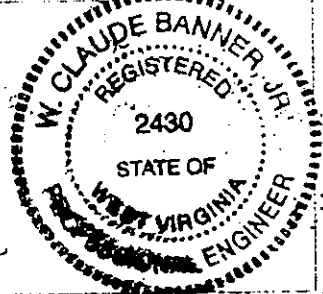
37 32 30

B1 32 30



FILE No. D:\M-10-40\dgn\jld\plot_files
DRAWING No. O&G_DW-8B.dgn
SCALE 1" = 1000'
MINIMUM DEGREE OF ACCURACY 1: 2500
PROVEN SOURCE OF ELEVATION USC&GS BM F44
e.l. 1565

I THE UNDERSIGNED, HEREBY CERTIFY THAT THIS PLAT IS CORRECT TO THE BEST OF MY KNOWLEDGE AND BELIEF AND SHOWS ALL THE INFORMATION REQUIRED BY LAW AND THE REGULATIONS ISSUED AND PRESCRIBED BY THE DEPARTMENT OF MINES
(SIGNED) *W. Claude Banner Jr.*
R.P.E. 2430 R.P.S.



STATE OF WEST VIRGINIA
DIVISION OF ENVIRONMENTAL PROTECTION
OFFICE OF OIL AND GAS
NITRO, WV

Date: March 24, 1998
Operator's Well No. DW-8B

API Well No. 47 109-01718C
State County Permit

WELL TYPE: OIL GAS XX LIQUID INJECTION
(IF "GAS") PRODUCTION XX STORAGE DEEP SHALLOW CBM XX
LOCATION: ELEVATION: 1585.05 WATERSHED: Nancy Fork/Indian Creek/Guyandotte River
DISTRICT: Center COUNTY: Wyoming
QUADRANGLE: USGS Pineville WV Quadrangle
SURFACE OWNER U.S. STEEL MINING COMPANY, LLC ACREAGE 37477.66
OIL & GAS ROYALTY OWNER U.S. STEEL MINING COMPANY, LLC LEASE ACREAGE
LEASE NO.

PROPOSED WORK: DRILL CONVERT XX DRILL DEEPER REDRILL FRACTURE OR STIMULATE PLUG OFF OLD FORMATION PERFORATE NEW FORMATION OTHER PHYSICAL CHANGE IN WELL (SPECIFY)

PLUG AND ABANDON CLEANOUT AND REPLUG

TARGET FORMATION Pocahontas No.3 ESTIMATED DEPTH 754.5

WELL OPERATOR U.S. Steel Mining Company, LLC DESIGNATED AGENT Joseph A. Zupanic
ADDRESS P.O. Box 338 ADDRESS P.O. Box 338

Pineville WV 24874

6-6 0

Pineville WV 24874

APR 27 1998

WV 1718 C

State of West Virginia
Department of Environmental Protection
Office of Oil and Gas

Well Operator's Report of Well Work

Farm name: U. S. Steel Mining Company, Inc. Operator Well No.: DW-8B (Rework)

LOCATION: Elevation: 1585.05 Quadrangle: Pineville

District: Center County: Wyoming
Latitude: 7978 Feet South of 37 Deg. 32 Min. 30 Sec.
Longitude 6610 Feet West of 81 Deg. 32 Min. 30 Sec.

Company: U. S. Steel Mining Company, Inc.

	Casing & Tubing	Used in drilling	Left in well	Cement fill up Cu. Ft.
Address: P. O. Box 338	16"	15'	15'	11.7 cu. ft.
	11 3/4"	601'	601'	285 cu. ft.
Agent: David Trader	8 5/8"	735'	735'	22.2 cu. ft.
Inspector: Barry Stollings				
Date Permit Issued: 07/03/01				
Date Well Work Commenced: 07/05/01	Set C.I. Plug @ 724'			
Date Well Work Completed: 07/19/01	Perforated casing from 703' to 619'			
Verbal Plugging:				
Date Permission granted on:				
Rotary X Cable Rig				
Total Depth (feet): 815'				
Fresh Water Depth (ft.): N/A				
Salt Water Depth (ft.): N/A				
Is coal being mined in area (N/Y)? Yes				
Coal Depths (ft.): 762' - 766.5'				

OPEN FLOW DATA

Producing formation Pocahontas No. 4 seam Pay zone depth (ft) 703' - 619'?

Gas: Initial open flow N/A MCF/d Oil: Initial open flow Bbl/d

Final open flow N/A MCF/d Final open flow Bbl/d

Time of open flow between initial and final tests Hours

Static rock Pressure psig (surface pressure) after Hours

Second producing formation Pay zone depth (ft)

Gas: Initial open flow MCF/d Oil: Initial open flow Bbl/d

Final open flow MCF/d Final open flow Bbl/d

Time of open flow between initial and final tests Hours

Static rock Pressure psig (surface pressure) after Hours

NOTE: ON BACK OF THIS FORM PUT THE FOLLOWING: 1). DETAILS OF PERFORATED INTERVALS, FRACTURING OR STIMULATING, PHYSICAL CHANGE, ETC. 2). THE WELL LOG WHICH IS A SYSTEMATIC DETAILED GEOLOGICAL RECORD OF ALL FORMATIONS, INCLUDING COAL ENCOUNTERED BY THE WELLBORE.

Signed: *Douglas Gillman*
By: TRC LSC, Inc.
Date: 12/05/05

DEC 09 2005

WYO 1718 R

Well Log & Geologic Record

Formation	Top	Bottom
Sandstone	0'	145'
Hard Sandstone	145'	223'
Shaley Sand	223'	290'
Sandstone	290'	321'
Shaley Sand	321'	413'
Coal & Shale	413'	419'
Sandy Shale	419'	476'
Quartz Sand	476'	595'
Shaley Sand	595'	703'
Coal P-4	703'	707'
Shale	707'	762'
Coal P-3	762'	766.5'
Shale	766.5'	815' T.D.

RD

State of West Virginia
Division of Environmental Protection
Section of Oil & Gas

Well Operator's Report of Well Work

Farm name: U.S. Steel Mining Company, LLC Operator Well No: DW-8B

Location: Elevation: 1,585.05 Quadrangle: PINEVILLE

District: CENTER County: WYOMING

Latitude: 7978 Feet South of 37 Deg. 32 Min. 30 Sec.
Longitude: 6610 Feet West of 81 Deg. 32 Min. 30 Sec.

Company: U.S. STEEL MINING COMPANY LLC
P.O. Box 338
Pineville, WV 24874-0338

Agent: Dave Trader

Inspector: OFIE HELMICK
Permit Issued: 04/22/98
Well Work commenced: *03/23/98
Well Work completed: 03/29/98
Verbal plugging
Permission granted on: _____
Rotary x Cable _____ Rig
Total depth (ft) 815
Fresh water depths (ft) N/A
Salt water depths (ft) N/A
Is coal being mined in the area (Y/N)? Y
Coal depths (ft): 762 - 766.5

Casing & Tubing Size	Used in Drilling	Left in Well	Cement Fill up
16"	15'	15'	11.7 Cu. Ft.
11 3/4"	601'	601'	285 Cu. Ft.
8 5/8"	735'	735'	22.2 Cu. Ft.

* Borehole drilled under WVDEP Permit O-4017-92 & NPDES WV0090000

RECEIVED
Office of Oil & Gas
Permitting
JUN 13 2001

OPEN FLOW DATA

Producing formation Pocahontas No. 3 Seam Pay zone depth (ft) 365.5
Gas: Initial open flow N/A Mcf/d Oil: Initial open flow 0 Bbl/d
Final open flow N/A Mcf/d Final open flow _____ Bbl/d
Time of open flow between initial and final tests: _____ hours
Static rock pressure _____ psig (surface pressure) after _____ hours

Second Producing formation _____ Pay zone depth (ft) _____
Gas: Initial open flow N/A Mcf/d Oil: Initial open flow _____ Bbl/d
Final open flow N/A Mcf/d Final open flow _____ Bbl/d
Time of open flow between initial and final tests: _____ hours
Static rock pressure _____ psig (surface pressure) after _____ hours

Note: ON BACK OF THIS FORM, PUT THE FOLLOWING: 1) DETAILS OF PERFORATED INTERVALS, FRACTURING OR STIMULATING, PHYSICAL CHANGE, ETC. 2) THE WELL LOG WHICH IS A SYSTEMATIC DETAILED GEOLOGICAL RECORD OF ALL FORMATIONS, INCLUDING COAL ENCOUNTERED BY THE WELLBORE.

Dave Trader
For: U.S. Steel Mining Company, LLC
By: Dave Trader
Date: _____

JUN 22 2001

WYO 1718 C

Details of Perforated Intervals, Fracturing or Stimulation, Physical Change, Etc.

Well Log & Geologic Record

Formation	Top	Bottom
Sandstone	0'	145'
Hard Sandstone	145'	223'
Shaley Sand	223'	290'
Sandstone	290'	321'
Shaley Sand	321'	413'
Coal & Shale	413'	419'
Sandy Shale	419'	476'
Quartz Sand	476'	595'
Shaley Sand	595'	703'
Coal P-4	703'	707'
Shale	707'	762'
Coal P-3	762'	766.5'
Shale	766.5'	815' T.D.

RECEIVED
Office of Oil & Gas
Permitting
JUN 13 2001
WV Division of
Environmental Protection