

WW-7  
8-30-06



West Virginia Department of Environmental Protection  
Office of Oil and Gas

**WELL LOCATION FORM: GPS**

API: 47-109-01382 WELL NO.: 11231

FARM NAME: Arthur Shrewsbury

RESPONSIBLE PARTY NAME: CNX Gas Co. LLC

COUNTY: Wyoming DISTRICT: Barkers Ridge

QUADRANGLE: Rhodell

SURFACE OWNER: Arthur Shrewsbury

ROYALTY OWNER: Penn. Virginia Oil and Gas

UTM GPS NORTHING: 4,152,897 m

UTM GPS EASTING: 477,786 m GPS ELEVATION: 850 m *2788 ft.*

The Responsible Party named above has chosen to submit GPS coordinates in lieu of preparing a new well location plat for a plugging permit or assigned API number on the above well. The Office of Oil and Gas will not accept GPS coordinates that do not meet the following requirements:

1. Datum: NAD 1983, Zone: 17 North, Coordinate Units: meters, Altitude: height above mean sea level (MSL) – meters.

2. Accuracy to Datum – 3.05 meters

3. Data Collection Method:

Survey grade GPS  : Post Processed Differential

Real-Time Differential

Mapping Grade GPS  : Post Processed Differential

Real-Time Differential

4. **Letter size copy of the topography map showing the well location.**

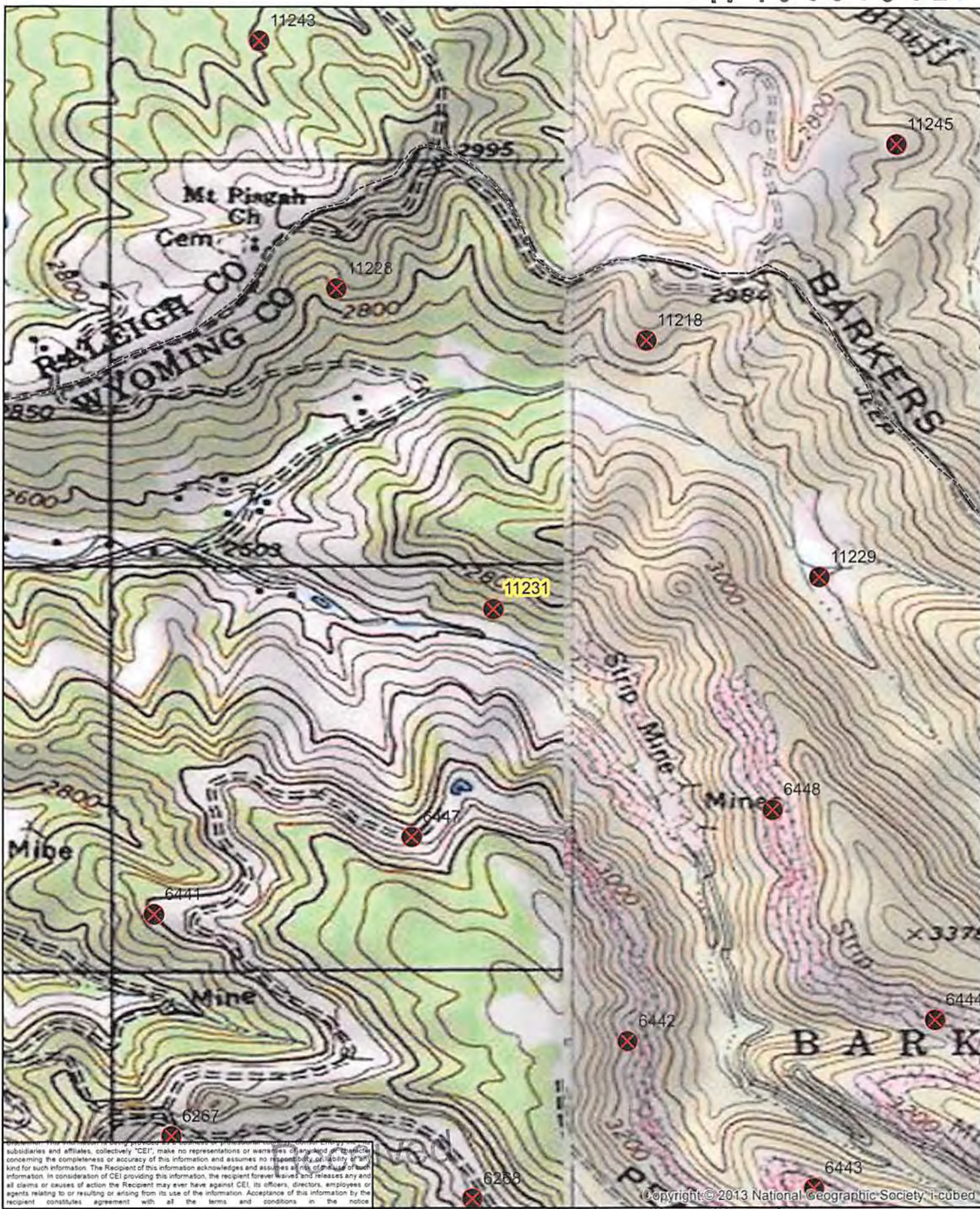
I the undersigned, hereby certify this data is correct to the best of my knowledge and belief and shows all the information required by law and the regulations issued and prescribed by the Office of Oil and Gas.

[Signature]  
Signature

Prod. Coord.  
Title

4/21/14  
Date





subsidaries and affiliates, collectively "CEI", make no representations or warranties of any kind concerning the completeness or accuracy of this information and assumes no responsibility of any kind for such information. The Recipient of this information acknowledges and assumes all risk of use of such information. In consideration of CEI providing this information, the recipient forever waives and releases any and all claims or causes of action the Recipient may ever have against CEI, its officers, directors, employees or agents relating to or resulting or arising from its use of the information. Acceptance of this information by the recipient constitutes agreement with all the terms and conditions in the notice

Copyright © 2013 National Geographic Society, i-cubed

APR - 7 2014



0 500 1,000 Feet

Date: 1/24/2014 Prepared By: KK

Revisions: Approved By: BS



PROPOSED PLUGGING  
WELL NUMBER 11231  
API# 47-109-01382  
GENERAL LOCATION MAP

Office of Oil and Gas  
WV Dept. of Environmental Protection

This map is property of CONSOL Energy Inc. and contains information that is proprietary and confidential in nature and may not be copied or reproduced without prior written consent.