

10901115P

WW-7  
8-30-06



West Virginia Department of Environmental Protection  
Office of Oil and Gas  
**WELL LOCATION FORM: GPS**

API: 47-109-01115 WELL NO.: WB 21  
FARM NAME: POCAHONTAS LAND CORP.  
RESPONSIBLE PARTY NAME: K. PETROLEUM, INC.  
COUNTY: WYOMING DISTRICT: CENTER  
QUADRANGLE: PINEVILLE  
SURFACE OWNER: PINNACLE LAND COMPANY  
ROYALTY OWNER: PINNACLE LAND COMPANY  
UTM GPS NORTHING: 4153818.3  
UTM GPS EASTING: 448072.1 GPS ELEVATION: 1505'

The Responsible Party named above has chosen to submit GPS coordinates in lieu of preparing a new well location plat for a plugging permit or assigned API number on the above well. The Office of Oil and Gas will not accept GPS coordinates that do not meet the following requirements:

1. Datum: NAD 1983, Zone: 17 North, Coordinate Units: meters, Altitude: height above mean sea level (MSL) – meters.
2. Accuracy to Datum – 3.05 meters
3. Data Collection Method:

Survey grade GPS  : Post Processed Differential

Real-Time Differential

Mapping Grade GPS  : Post Processed Differential

Real-Time Differential

4. Letter size copy of the topography map showing the well location.

I the undersigned, hereby certify this data is correct to the best of my knowledge and belief and shows all the information required by law and the regulations issued and prescribed by the Office of Oil and Gas.

  
Signature

OFFICE MANAGER  
Title

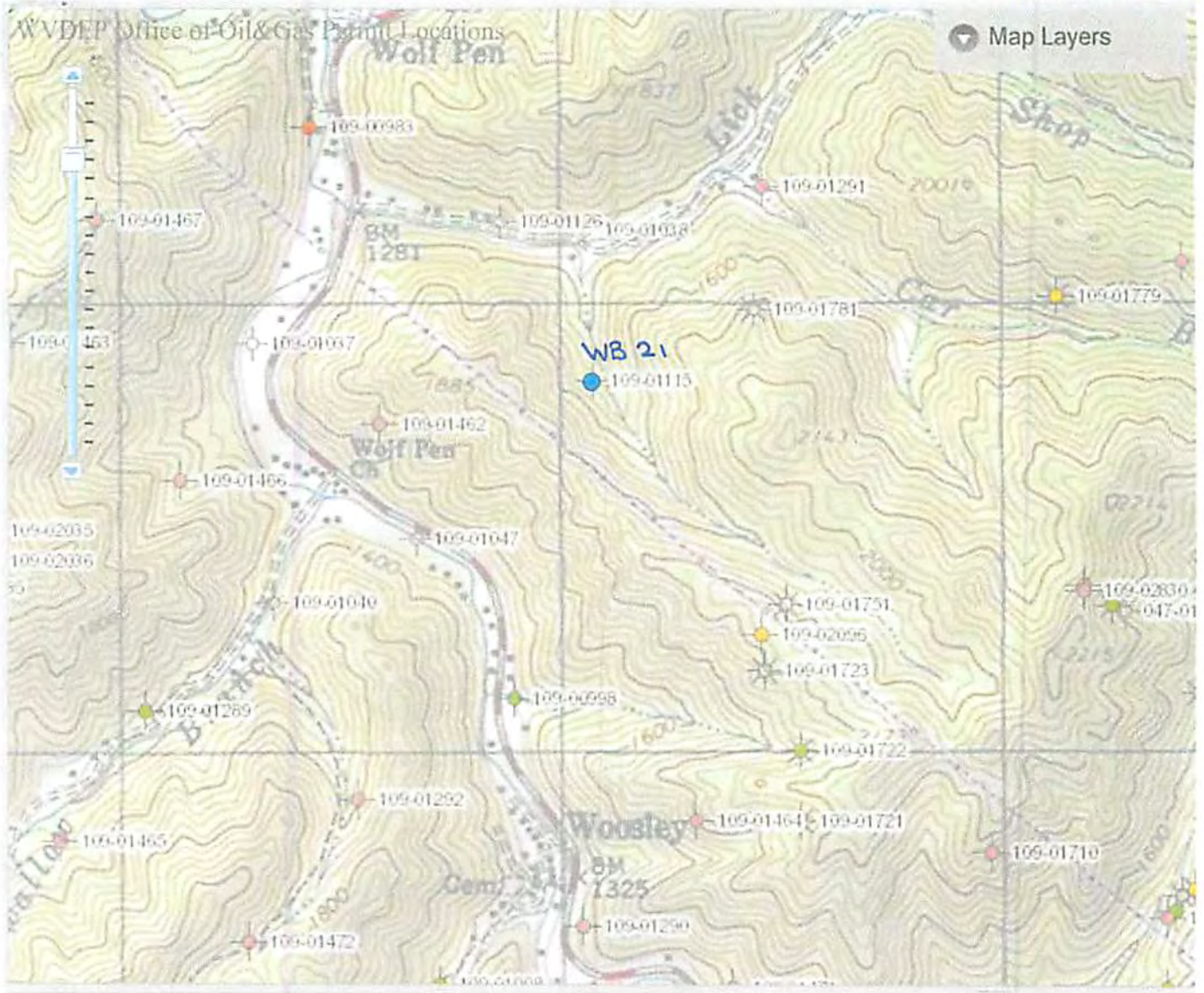
JULY 8TH, 2015  
Date

RECEIVED  
Office of Oil and Gas

AUG 13 2015

West Virginia Department of  
Environmental Protection

09/11/2015



WB 21 47-109-01115

RECEIVED  
Office of Oil and Gas

AUG 13 2015

WV Department of  
Environmental Protection