

10900845A

WW-7
3-21-14



West Virginia Department of Environmental Protection
Office of Oil and Gas
WELL LOCATION FORM: GPS

API: 47-109-00845 WELL NO.: WV 091241 (Pardee Land #69)

FARM NAME: Pardee Land Company

RESPONSIBLE PARTY NAME: EQT Production Company

COUNTY: Wyoming DISTRICT: Oceana

QUADRANGLE: Lorado 7.5'

SURFACE OWNER: Pardee and Curtin Realty, LLC

ROYALTY OWNER: Pardee Minerals, LLC, et al.

UTM GPS NORTHING: 4179572

UTM GPS EASTING: 440211 GPS ELEVATION: 651 m (2138 ft)

The Responsible Party named above has chosen to submit GPS coordinates in lieu of preparing a new well location plat for a plugging permit or assigned API number on the above well. The Office of Oil and Gas will not accept GPS coordinates that do not meet the following requirements:

1. Datum: NAD 1983, Zone: 17 North, Coordinate Units: meters, Altitude: height above mean sea level (MSL) – meters.
2. Accuracy to Datum – 3.05 meters
3. Data Collection Method:
Survey grade GPS : Post Processed Differential
Real-Time Differential
Mapping Grade GPS : Post Processed Differential
Real-Time Differential
4. **Letter size copy of the topography map showing the well location.**

Received

APR 22 2014

Office of Oil and Gas
WV Dept. of Environmental Protection

I the undersigned, hereby certify this data is correct to the best of my knowledge and belief and shows all the information required by law and the regulations issued and prescribed by the Office of Oil and Gas.

Steph...
Signature
4/11/14
Date

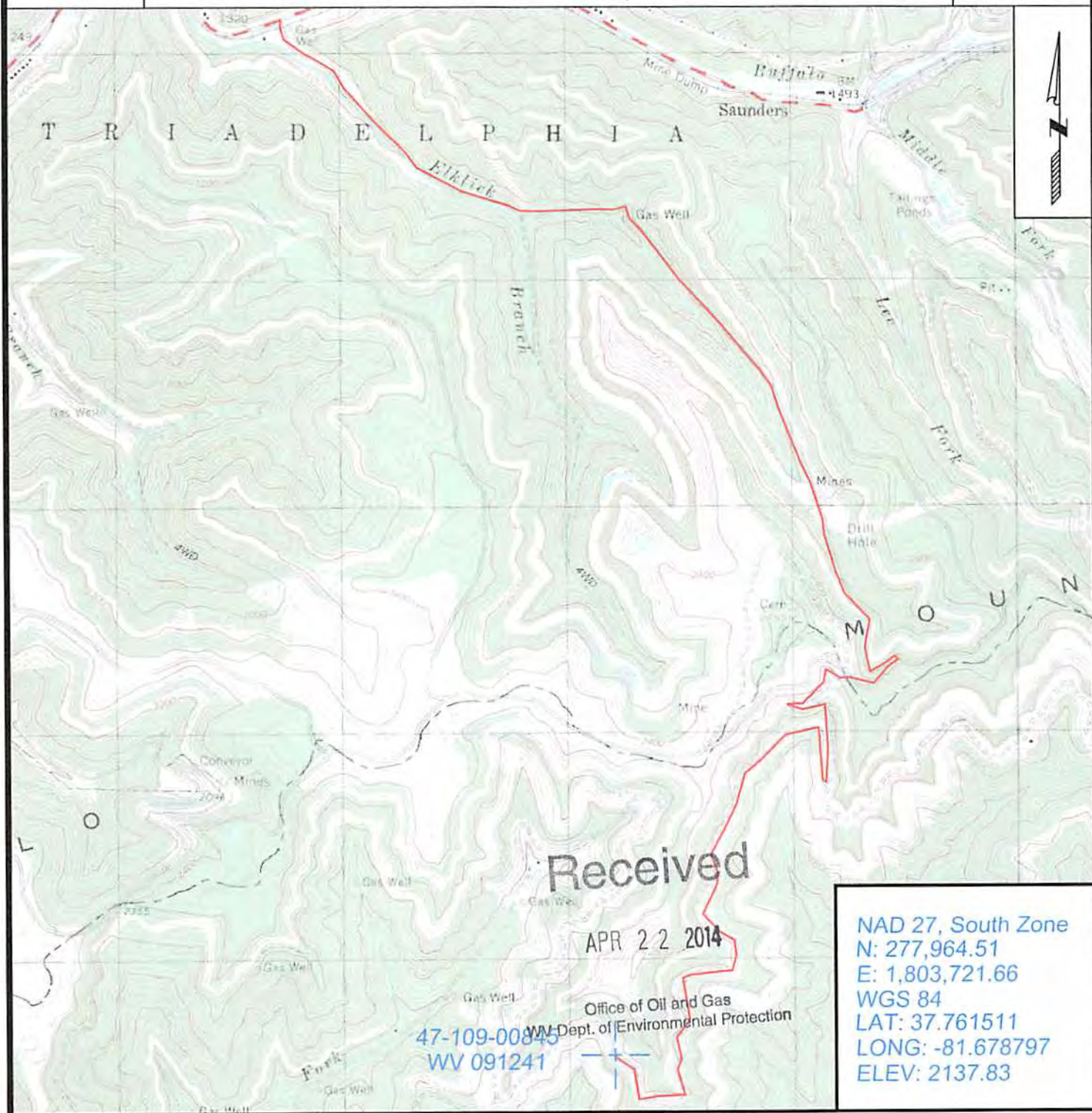
PS # 2180
Title

10900845F

Topo Quad: Lorado 7.5' Scale: 1" = 2000'
 County: Wyoming Date: March 20, 2014
 District: Oceana Project No: 22-22-00-08

47-109-00845 WV 091241 (Pardee Land #69)

Topo



NAD 27, South Zone
 N: 277,964.51
 E: 1,803,721.66
 WGS 84
 LAT: 37.761511
 LONG: -81.678797
 ELEV: 2137.83

47-109-00845
 WV 091241

Office of Oil and Gas
 WV Dept. of Environmental Protection



SURVEYING AND MAPPING SERVICES PERFORMED BY:
ALLEGHENY SURVEYS, INC.

1-800-482-8606
 237 Birch River Road
 Birch River, WV 26610
 PH: (304) 649-8606
 FAX: (304) 649-8608

PREPARED FOR:

EQT Production Company

P.O. Box 280
 Bridgeport, WV 26330