



Diversified Gas & Oil Corporation
100 Diversified Way
Pikeville KY, 41051

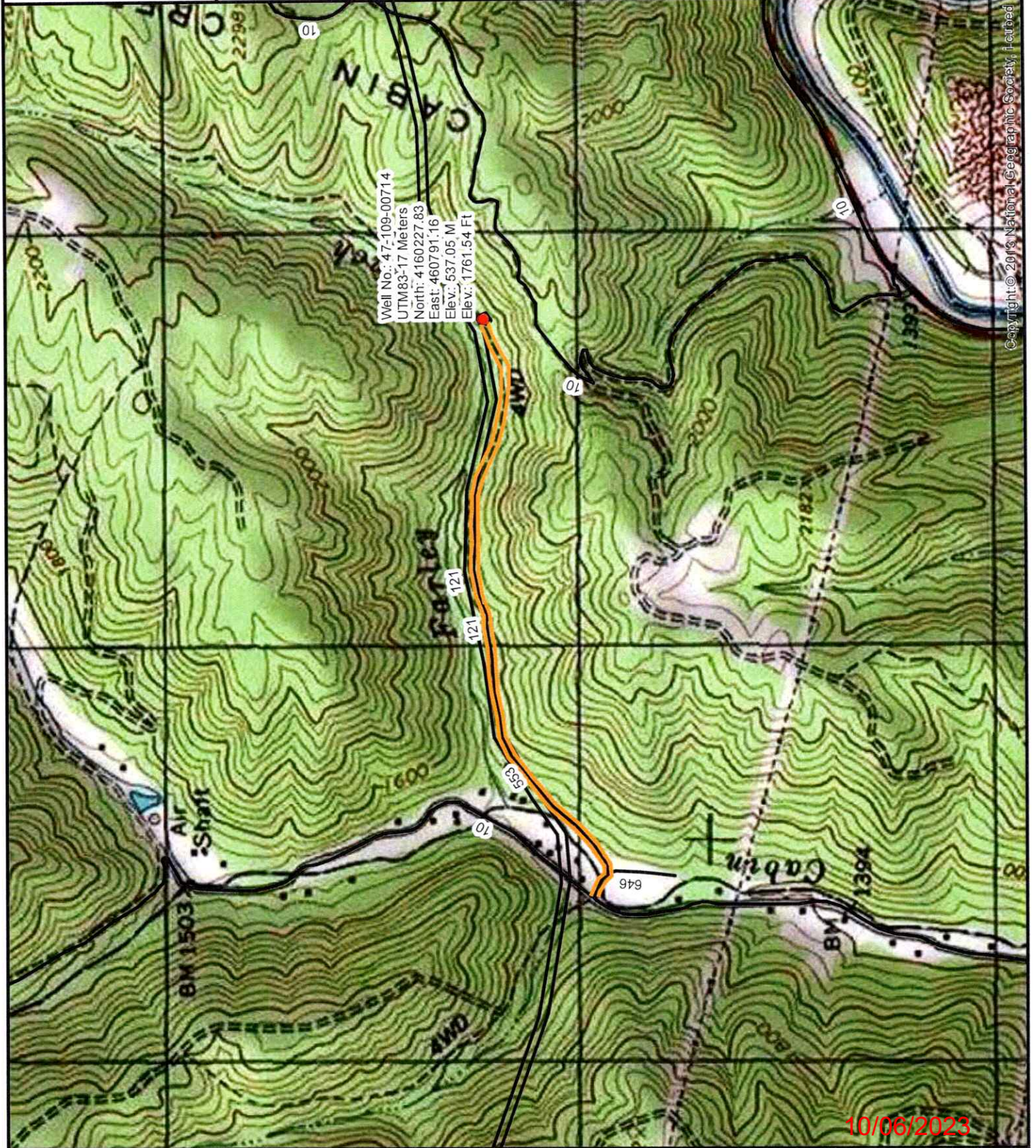
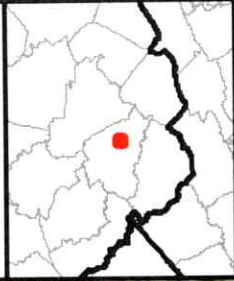
47-109-00714

Plugging Map

Legend

- Well
- Access Road
- Pits
- Pad
- Public Roads

RECEIVED
Office of Oil and Gas
SEP 15 2023
WV Department of
Environmental Protection



Copyright © 2013 National Geographic Society, Inc.



Diversified Gas & Oil Corporation
100 Diversified Way
Pikeville KY, 41051

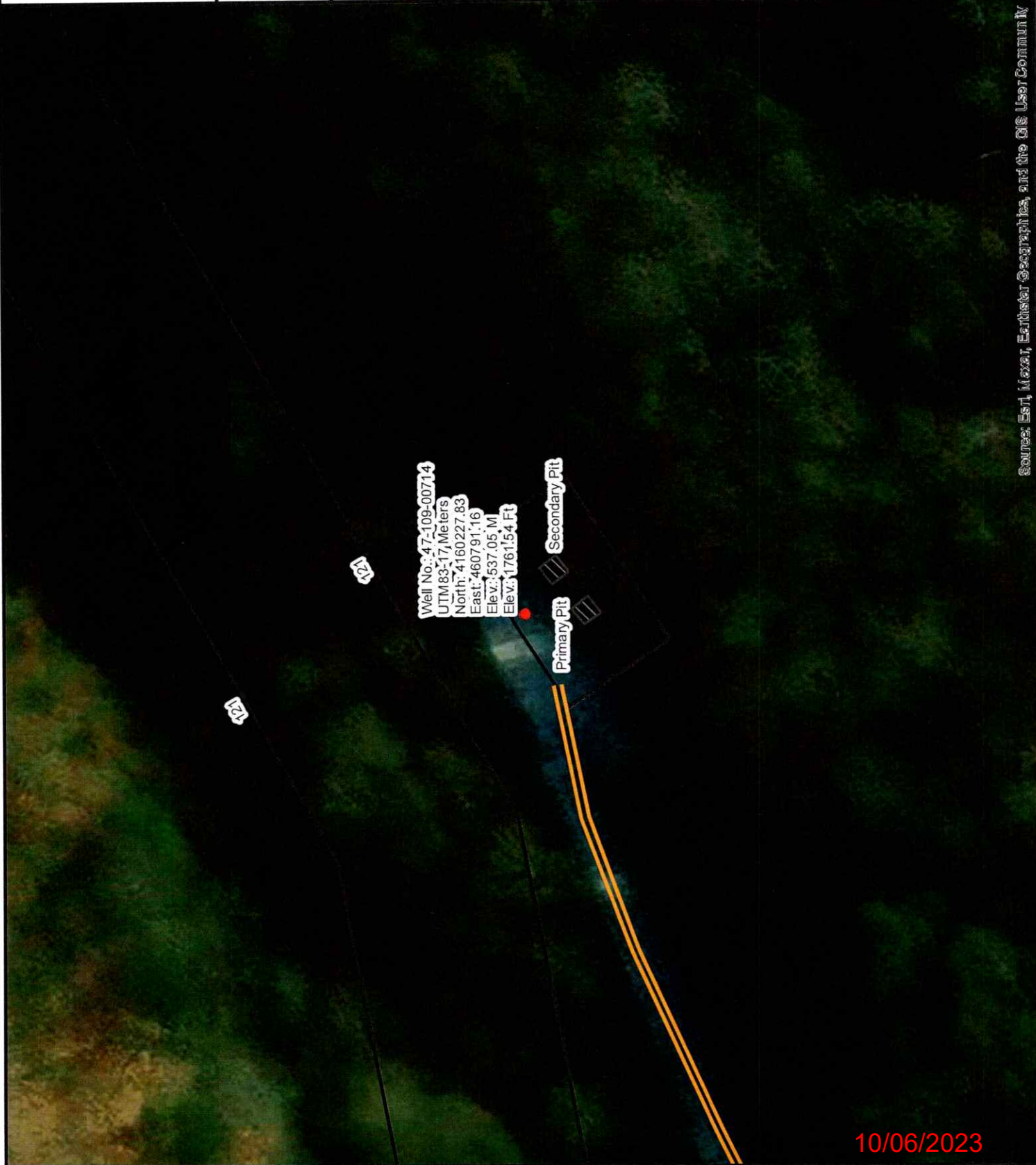
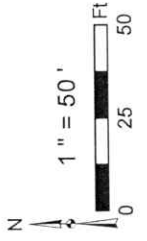
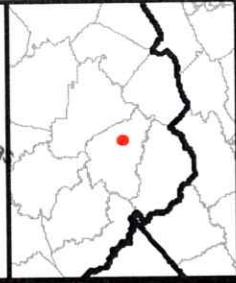
47-109-00714

Plugging Map

Legend

- Well
- Access Road
- Pits
- Pad
- Public Roads

RECEIVED
Office of Oil and Gas
SEP 15 2023
WV Department of
Environmental Protection



Source: Esri, Maxar, Earthstar Geographic, and the GIS User Community

10/06/2023

WW-7
8-30-06



West Virginia Department of Environmental Protection
Office of Oil and Gas
WELL LOCATION FORM: GPS

API: 4710900714 WELL NO.: Pocahontas Land Corp 3

FARM NAME: Pocahontas Land Corporation

RESPONSIBLE PARTY NAME: Diversified Production, LLC

COUNTY: Wyoming DISTRICT: Center

QUADRANGLE: Mullens 7.5'

SURFACE OWNER: Pocahontas Surface Interests, LLC - c/o Pocahontas Royalties, LLC

ROYALTY OWNER: Diversified ABS II LLC, Diversified ABS III Upstream LLC, Diversified ABS LLC, Diversified ABS V Upstream LLC, Diversified ABS VI Upstream LLC

UTM GPS NORTHING: 4160227.83

UTM GPS EASTING: 460791.16 GPS ELEVATION: 1761.54'

RECEIVED
Office of Oil and Gas
SEP 15 2023
WV Department of Environmental Protection

The Responsible Party named above has chosen to submit GPS coordinates in lieu of preparing a new well location plat for a plugging permit or assigned API number on the above well. The Office of Oil and Gas will not accept GPS coordinates that do not meet the following requirements:

- Datum: NAD 1983, Zone: 17 North, Coordinate Units: meters, Altitude: height above mean sea level (MSL) – meters.
- Accuracy to Datum – 3.05 meters
- Data Collection Method:

Survey grade GPS : Post Processed Differential

Real-Time Differential

Mapping Grade GPS : Post Processed Differential

Real-Time Differential

- Letter size copy of the topography map showing the well location.**

I the undersigned, hereby certify this data is correct to the best of my knowledge and belief and shows all the information required by law and the regulations issued and prescribed by the Office of Oil and Gas.

Signature

Chris Veazey - Permitting Supervisor
Title

09/11/23
Date

10/06/2023