

WW-7
8-30-06



West Virginia Department of Environmental Protection
Office of Oil and Gas
WELL LOCATION FORM: GPS

API: 47-109-00120 WELL NO.: #29

FARM NAME: W. M. Ritter Lumber Co.

RESPONSIBLE PARTY NAME: Boone East Development Co., LLC

COUNTY: Wyoming DISTRICT: Center

QUADRANGLE: Pineville

SURFACE OWNER: Heartwood Forest Land Fund

ROYALTY OWNER: Plum Creek Timberlands

UTM GPS NORTHING: 4158013.624

UTM GPS EASTING: 448453.967 GPS ELEVATION: 1,516.89' / 462.35m

The Responsible Party named above has chosen to submit GPS coordinates in lieu of preparing a new well location plat for a plugging permit or assigned API number on the above well. The Office of Oil and Gas will not accept GPS coordinates that do not meet the following requirements:

1. Datum: NAD 1983, Zone: 17 North, Coordinate Units: meters, Altitude: height above mean sea level (MSL) – meters.
2. Accuracy to Datum – 3.05 meters
3. Data Collection Method:

Survey grade GPS : Post Processed Differential

Real-Time Differential

Mapping Grade GPS : Post Processed Differential

Real-Time Differential

4. Letter size copy of the topography map showing the well location.

I the undersigned, hereby certify this data is correct to the best of my knowledge and belief and shows all the information required by law and the regulations issued and prescribed by the Office of Oil and Gas.

Signature

MANAGER

Title

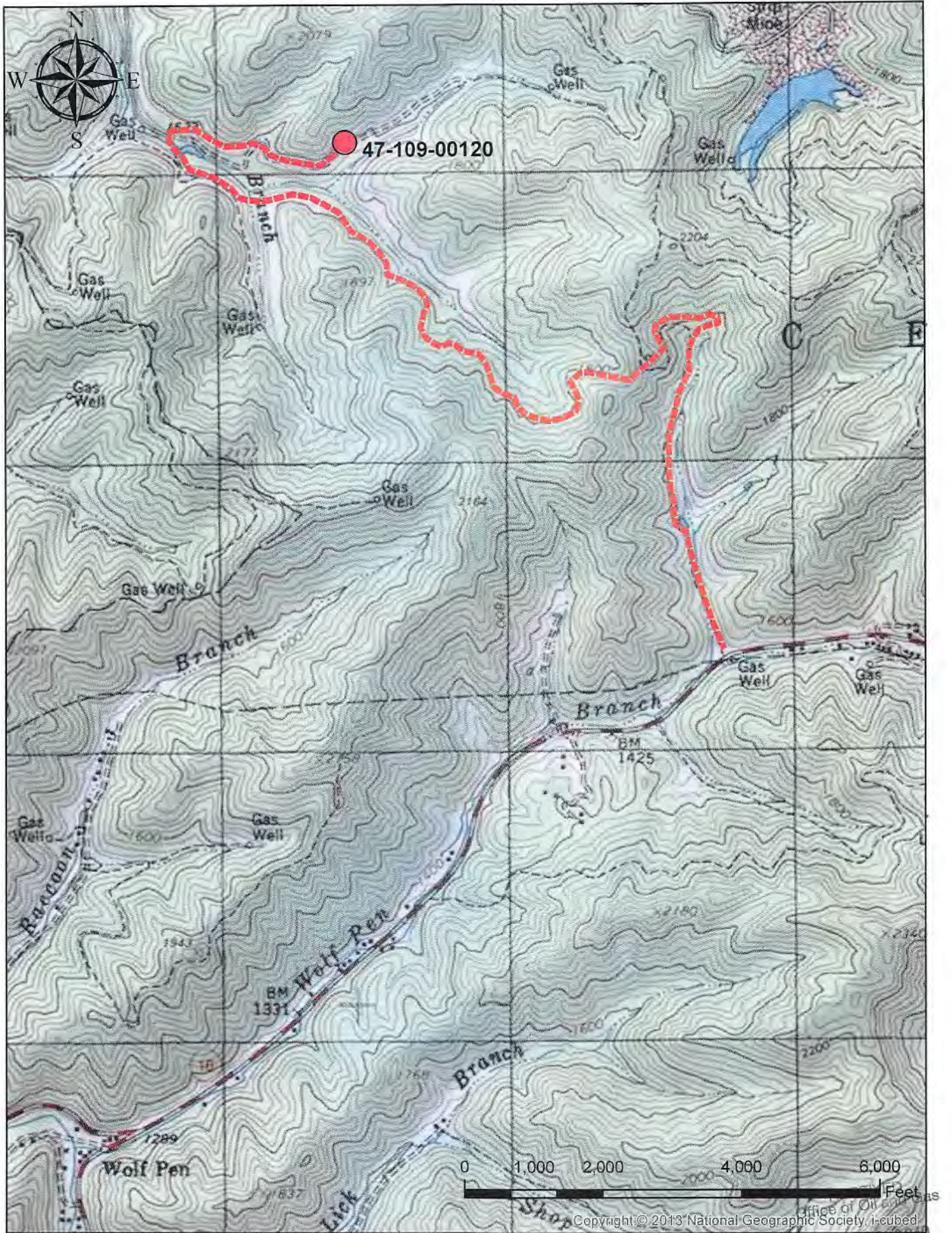
2/13/19

Date

RECEIVED
Office of Oil and Gas

FEB 19 2019

47-109-00120 - Location & Access



Copyright © 2013 National Geographic Society, Inc.

FEB 19 2019

WV Department of