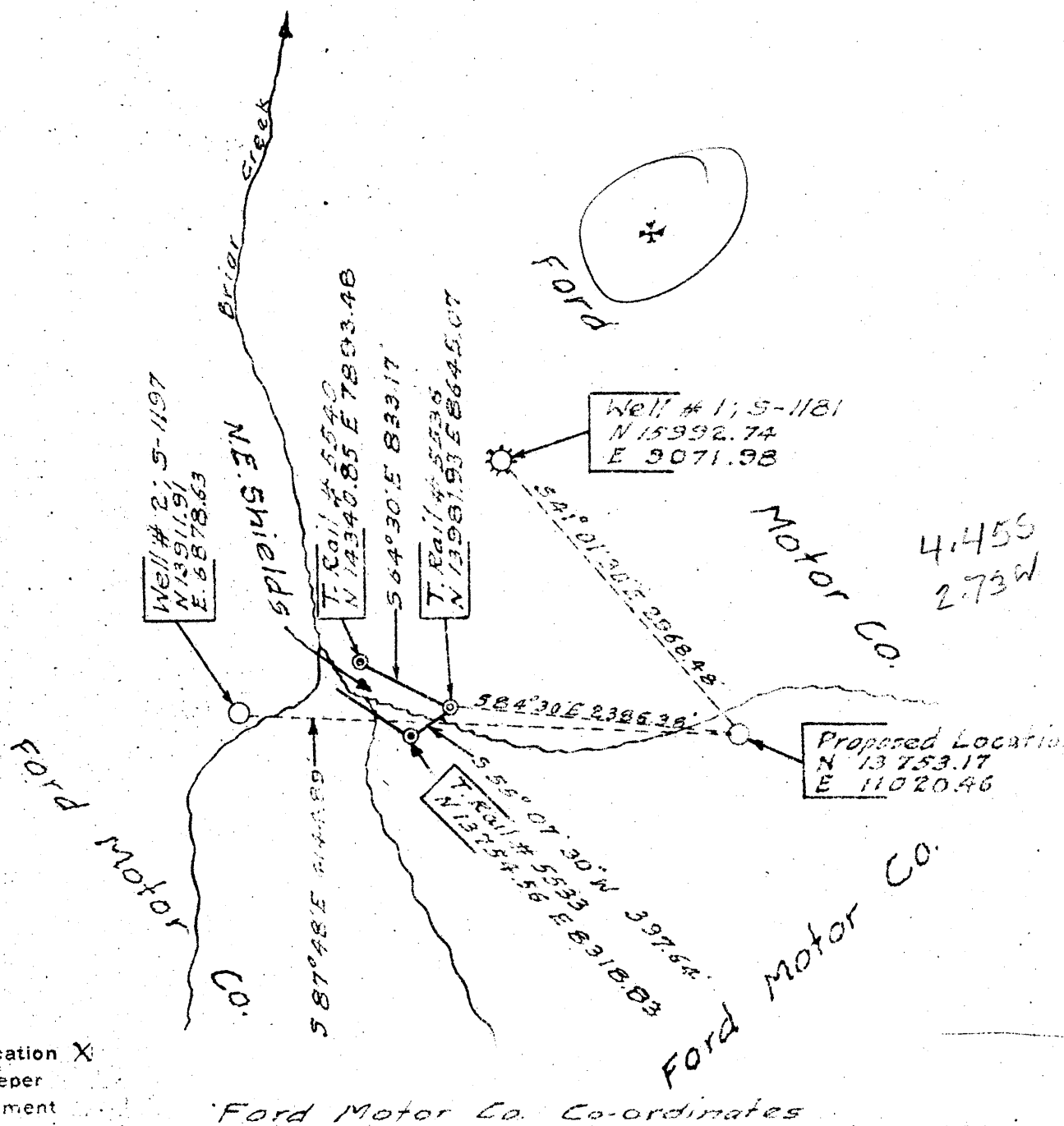


1  
2  
3

35'



New Location X  
Drill Deeper  
Abandonment

Ford Motor Co. Co-ordinates

Company Godfrey L. Cabot, Inc.  
 Address 900 Union Bldg. Charleston, W. Va.  
 Farm Ford Motor Co.  
 Tract Acres 5532.88 Lease No. 4-556  
 Well (Farm) No. 3 Serial No. 1200  
 Elevation (Spirit Level) 1743'  
 Quadrangle Pineville  
 County Wyoming District Baileysville  
 Engineer Logan McDonald  
 Engineer's Registration No. 610  
 File No. \_\_\_\_\_ Drawing No. \_\_\_\_\_  
 Date 12-27-45 Scale 1" = 1320'

STATE OF WEST VIRGINIA  
 DEPARTMENT OF MINES  
 OIL AND GAS DIVISION  
 CHARLESTON

WELL LOCATION MAP  
 FILE NO. WYO-119

+ Denotes location of well on United States Topographic Maps, scale 1 to 62,500, latitude and longitude lines being represented by border lines as shown.  
 - Denotes one inch spaces on border line of original tracing.

6-0 272

WEST VIRGINIA DEPARTMENT OF MINES  
OIL & GAS DIVISION  
W E L L R E C O R D

Permit No. Wyo 119  
Pineville Quad.

Gas Well  
CASING & TUBING

Company	Godfrey L. Cabot, Inc.			
Address	Charleston, W. Va.	10 $\frac{1}{2}$	314	314 shoe
Farm	Ford Motor Company	8 5/8	670	670 Packer
Location		7	2704	shoe
Well No.	3 serial 1200 Elev. <u>1</u>	2	2492	2492
District	Baileysville Wyoming County			
Surface				
Mineral				
Commenced	Feb. 26, 1946			Tubed and shut in 8-7-46
Completed	June 28, 1946			Spang-Hookwall Packer
Open flow	40/10ths W in 2"			2 3/8 x 7 x 16
Volume	267 MCF			Depth 2349
Rock Pressure	Maxon 400 lbs. 24 hrs.			2 3/8" x 143 Anchor
	Ravenscliff 215 lbs. in 24 hrs.			Perf. top 2486
Shot	40 qts. 2460 to 2480 7-5-46			bot 2492
	B.S. 158 MCF 6 hrs. A.S. 267 MCF			top 2466
Fresh Water	80 4 blrs. per hr. 13" blrs.; 476 2 $\frac{1}{2}$			bot 2486
	(10") blrs. per hr.			
Salt Water	3832-36 filled 80 feet			

Surface	0	35	Red Rock	1810	1820
Sand	35	45	Lime	1820	1846
Slate	45	55	Red Rock	1846	1916
Lime	55	145	Lime, Dark	1916	1932
Sand	145	180	Slate & Shells	1932	1942
Coal	180	185	Lime, Dark	1942	1966
Slate	185	196	Slate & Shells	1966	1993
Sand	196	204	Lime, Dark	1993	2050
Slate	204	243	Slate & Shells	2050	2060
Coal	243	246	Salt Sand	2060	2259
Lime Shell	246	269	Lime	2259	2265
Slate & Shells	269	292	Sand	2265	2365
Sandy Lime	292	312	Lime, Black	2365	2424
Slate	312	317	Sand	2424	2440
Coal	317	321	Lime, Black	2440	2466
Sand	321	468	Maxon Sand	2466	2490
Lime, Dark	468	476	Slate, Black	2490	2520
Shale & Shells	476	487	Pencil Cave	2520	2526
Sandy Lime	487	508	Lime, Dark	2526	2676
Coal	508	511	Shale, Black	2676	2689
Sandy Lime	511	585	Big Lime	2689	3133
Coal	585	590	Big Injun	3133	3212
Slate Shells	590	640	Lime, Blue	3212	3472
Lime, Dark	640	655	Slate & Shells	3472	3778
Slate Shells	655	684	Brown Shale	3778	3790
Lime Dark	684	710	Lime, Black	3790	3815
Slate & Shells	710	729	Berea Grit	3815	3836
Lime, Sandy	729	832	Gritty Lime	3836	
Shale & Shells	832	881	TOTAL DEPTH		3840
Sandy Lime	881	905			
Slate & Shells	905	912			
Lime, Gray	912	949			
Coal	949	952			
Slate, Shells	952	1034			
Lime Shells	1034	1054			
Slate Shells	1054	1145			
Sand	1145	1247			
Slate & Shells	1247	1255			
Red Rock	1255	1265			
Slate & Shells	1265	1494			
Lime, Dark	1494	1535			
Slate & Shells	1535	1554			
Lime, Sand	1554	1580			
Slate	1580	1582			
Sand, Ravenscliff	1582	1625			
Lime	1625	1629			
Slate & Shells	1629	1663			
Lime, Dark	1663	1720			
Red Rock	1720	1735			
Sandy Lime	1735	1810			

PRODUCING SAND RECORD

Maxon 2466 to 2490 267 MCF Init. Prod.  
Ravenscliff 1617 to 1619 26 MCF "

Gas 746 Smell  
H Gas 1617-19 26 MCF  
Gas 2466-71 353 MCF  
Gas 2811 not enough to test  
Gas 3832 18 MCF