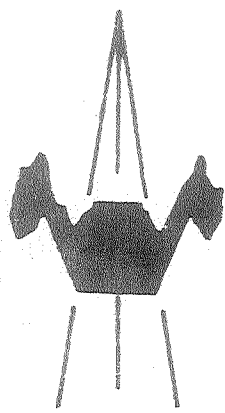
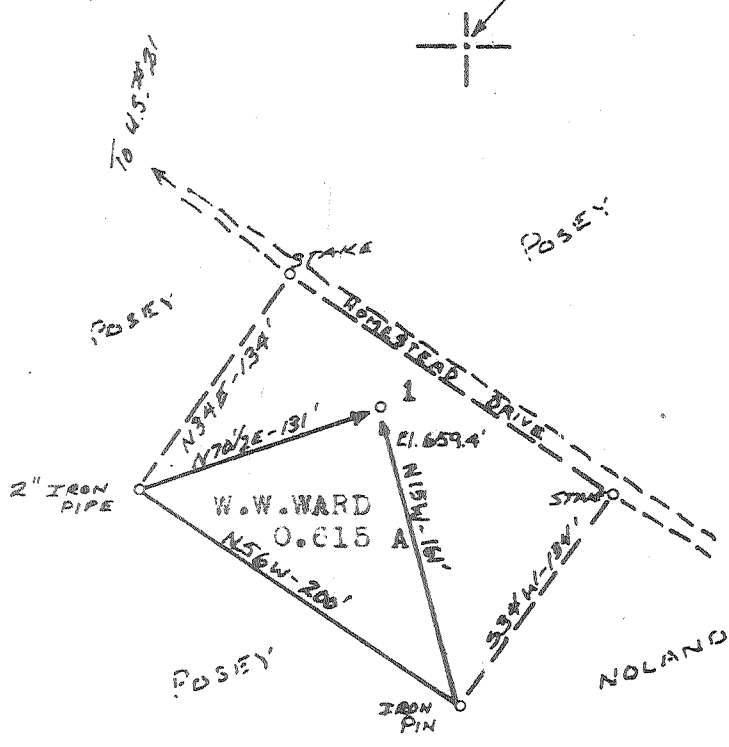


Latitude 39° 25'

3.55 Mi. S
3.89 Mi. W.

Longitude 81° 25'



ACCURACY: 1/100'

Source of Elevation BOAZ (653')

- New Location
- Drill Deeper
- Abandonment
- Fracture
- Redrill

I, the undersigned, hereby certify that this map is correct to the best of my knowledge and belief and shows all the information required by paragraph 6 of the rules and regulations of the oil and gas section of the mining laws of West Virginia.

Chet Waterman

Company	A. T. WEINSTOCK	
Address	WILLIAMSTOWN, W. VA.	
Farm	W. W. WARD	
Tract	Acres 0.615	Lease No.
Well (Farm) No.	1	Serial No.
Elevation (Spirit Level)	659.4'	
Quadrangle	MARIETTA - WC	
County	WOOD	District WILLIAMS
Engineer	CHET WATERMAN	
Engineer's Registration No.	3788	
File No.	65003-60	Drawing No.
Date	11/2/65	Scale 1" = 100'

STATE OF WEST VIRGINIA
DEPARTMENT OF MINES
OIL AND GAS DIVISION
CHARLESTON

WELL LOCATION MAP
FILE NO. Woo - 773A

+ Denotes location of well on United States Topographic Maps, scale 1 to 62,500, latitude and longitude lines being represented by border lines as shown.

— Denotes one inch spaces on border line original tracing.