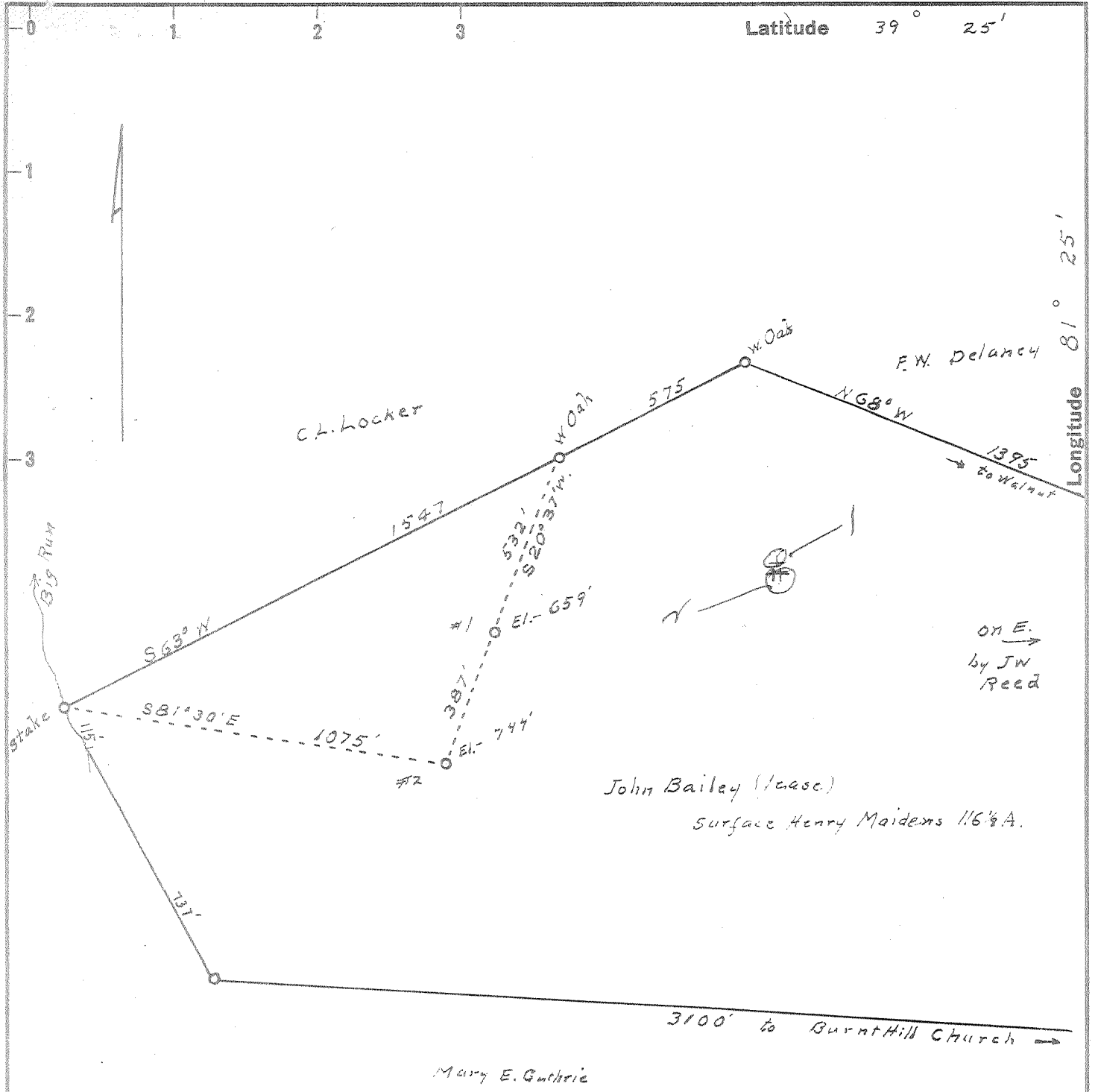


Latitude 39° 25'

Longitude 81° 25'



John Bailey (lease)  
 surface Henry Maidens 116 1/8 A.

#1	2,17 W
#1	2,9 Q
#2	2,18 W
#2	3,98 Q

New Location   
 Drill Deeper   
 Abandonment

FEB 10 1960

Company Feick and Hoon  
 Address RR2, Walker, Wood Co, W.Va.  
 Farm John Bailey (Henry Maidens, surface)  
 Tract Acres 116 1/8 Lease No. \_\_\_\_\_  
 Well (Farm) No. 1, 2 Serial No. \_\_\_\_\_  
 Elevation (Spirit Level) #1 659, #2 744  
 Quadrangle Marietta, Ohio  
 County Wood District William  
 Engineer Robert R. Anderson  
 Engineer's Registration No. 296  
 File No. \_\_\_\_\_ Drawing No. \_\_\_\_\_  
 Date 1/26 1960 Scale 1 in = 400 feet

STATE OF WEST VIRGINIA  
 DEPARTMENT OF MINES  
 OIL AND GAS DIVISION  
 CHARLESTON

WELL LOCATION MAP

FILE NO. Woo-735-A #1  
Woo-736-A #2

+ Denotes location of well on United States Topographic Maps, scale 1 to 62,500, latitude and longitude lines being represented by border lines as shown.

- Denotes one inch spaces on border line of original tracing.

JOHN BAILEY nos. 1 & 2 - FEICK & HOON - Woo-735-A  
 (Henry Maidens surface)



STATE OF WEST VIRGINIA  
DEPARTMENT OF MINES  
OIL AND GAS DIVISION

373

Quadrangle Mmiella  
Permit No. 736-A

WELL RECORD

Oil or Gas Well \_\_\_\_\_ (KIND)

Company Feick & Moon  
Address Rt. 2, Walker, W. Va.  
Farm John Bailey Acres 116  
Location (waters) Big Run  
Well No. 2 Elev. 744  
District William County Wood  
The surface of tract is owned in fee by Henry Maidens  
Address \_\_\_\_\_  
Mineral rights are owned by Henry Maidens  
Address \_\_\_\_\_  
Drilling commenced \_\_\_\_\_  
Drilling completed 1926  
Date Shot \_\_\_\_\_ From \_\_\_\_\_ To \_\_\_\_\_  
With \_\_\_\_\_  
Open Flow \_\_\_\_\_ /10ths Water in \_\_\_\_\_ Inch  
\_\_\_\_\_ /10ths Merc. in \_\_\_\_\_ Inch  
Volume \_\_\_\_\_ Cu. Ft.  
Rock Pressure \_\_\_\_\_ lbs. \_\_\_\_\_ hrs.  
Oil \_\_\_\_\_ bbls., 1st 24 hrs.  
WELL ACIDIZED \_\_\_\_\_  
WELL FRACTURED \_\_\_\_\_

Casing and Tubing	Used in Drilling	Left in Well	Packers
Size			Kind of Packer
16			
13			
10			Size of
8 1/4			
x6 1/4"		930	Depth set
5 3/16			
3			Perf. top
2		1125	Perf. bottom
Liners Used			Perf. top
			Perf. bottom

CASING CEMENTED \_\_\_\_\_ SIZE \_\_\_\_\_ No. Ft. \_\_\_\_\_ Date \_\_\_\_\_

COAL WAS ENCOUNTERED AT \_\_\_\_\_ FEET \_\_\_\_\_ INCHES  
\_\_\_\_\_ FEET \_\_\_\_\_ INCHES \_\_\_\_\_ FEET \_\_\_\_\_ INCHES  
\_\_\_\_\_ FEET \_\_\_\_\_ INCHES \_\_\_\_\_ FEET \_\_\_\_\_ INCHES

RESULT AFTER TREATMENT \_\_\_\_\_  
ROCK PRESSURE AFTER TREATMENT \_\_\_\_\_  
Fresh Water \_\_\_\_\_ Feet Salt Water \_\_\_\_\_ Feet

Formation	Color	Hard or Soft	Top	Bottom	Oil, Gas or Water	Depth	Remarks
<u>Maxburg Sand</u>	<u>white</u>	<u>Soft</u>	<u>1120</u>	<u>1132</u>	<u>Oil</u>	<u>1180</u>	<u>Total depth 1180</u>

MAR 26 1960

