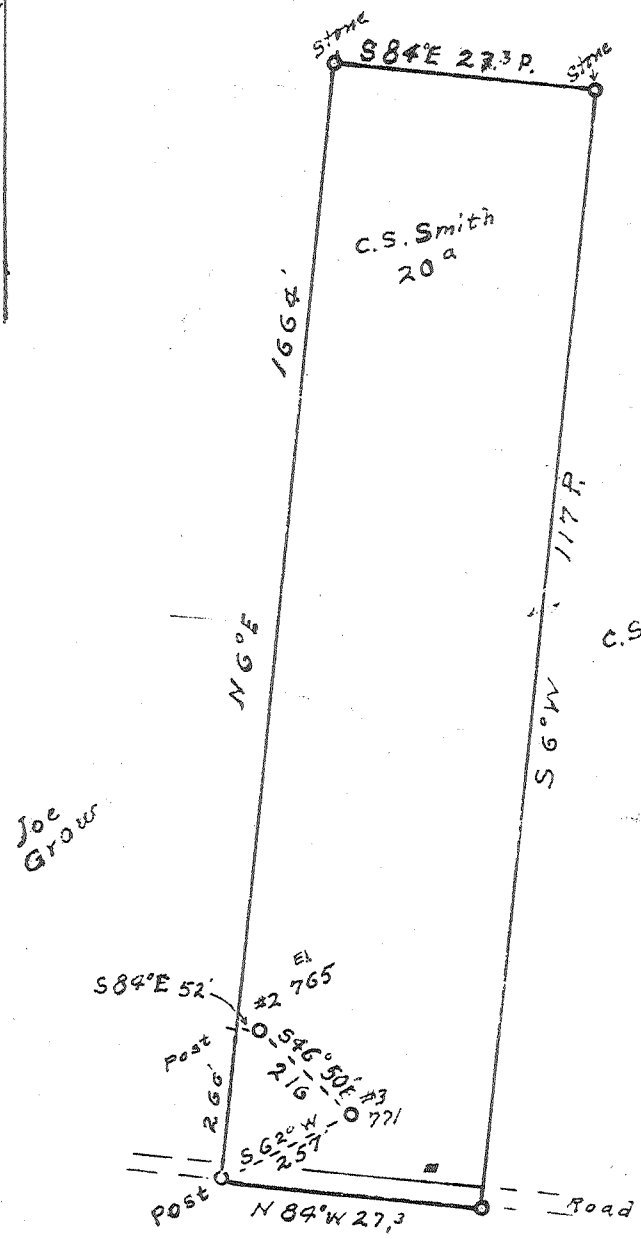


1  
2  
3



Joe Grow

C.S. Smith 70B

Fred Richards

New Location   
 Drill Deeper   
 Abandonment

JUL 19 1959

#2  
 0.46 W  
 4.08  
 #3  
 0.46 W  
 7.57

Company Feick, Patterson & Feick  
 Address RR2, Walker  
 Farm C.S. Smith  
 Tract 20a Acres 20 & 76' Lease No. \_\_\_\_\_  
 Well (Farm) No. 2 & 3 Serial No. \_\_\_\_\_  
 Elevation (Spirit Level) 765 771  
 Quadrangle Marietta Ohio, W Va  
 County Wood District Williams  
 Engineer Robert R. Anderson  
 Engineer's Registration No. 296  
 File No. \_\_\_\_\_ Drawing No. \_\_\_\_\_  
 Date Oct 19<sup>th</sup> 58 Scale 20 Feet to 1 in.

STATE OF WEST VIRGINIA  
 DEPARTMENT OF MINES  
 OIL AND GAS DIVISION  
 CHARLESTON

WELL LOCATION MAP

FILE NO. W00-700-A #2  
W00-701-A #3

+ Denotes location of well on United States Topographic Maps, scale 1 to 62,500, latitude and longitude lines being represented by border lines as shown.  
 - Denotes one inch spaces on border line of original tracing.



370

STATE OF WEST VIRGINIA  
DEPARTMENT OF MINES  
OIL AND GAS DIVISION

Quadrangle Merritt

Permit No. 701-A

WELL RECORD

Oil or Gas Well \_\_\_\_\_  
(KIND)

Company Feick-Patterson & Feick  
 Address Rt. 2, Walker, W. Va.  
 Farm C. S. Smith Acres 20  
 Location (waters) \_\_\_\_\_  
 Well No. 3 Elev. 721  
 District Williams County Wood  
 The surface of tract is owned in fee by \_\_\_\_\_  
 Address \_\_\_\_\_  
 Mineral rights are owned by \_\_\_\_\_  
 Address \_\_\_\_\_  
 Drilling commenced \_\_\_\_\_  
 Drilling completed 1920  
 Date Shot \_\_\_\_\_ From \_\_\_\_\_ To \_\_\_\_\_  
 With \_\_\_\_\_  
 Open Flow \_\_\_\_\_ /10ths Water in \_\_\_\_\_ Inch  
 \_\_\_\_\_ /10ths Merc. in \_\_\_\_\_ Inch  
 Volume \_\_\_\_\_ Cu. Ft.  
 Rock Pressure \_\_\_\_\_ lbs. \_\_\_\_\_ hrs.  
 Oil \_\_\_\_\_ bbls., 1st 24 hrs.  
 WELL ACIDIZED \_\_\_\_\_  
 WELL FRACTURED \_\_\_\_\_

Casing and Tubing	Used in Drilling	Left in Well	Packers
Size			
16			Kind of Packer _____
13			
10			Size of _____
8 1/4	55'	55'	
6 3/4	815'	815'	Depth set _____
5 3/16			
3	865'	865'	Perf. top _____
2			Perf. bottom _____
Liners Used			Perf. top _____
			Perf. bottom _____

CASING CEMENTED \_\_\_\_\_ SIZE \_\_\_\_\_ No. Ft. \_\_\_\_\_ Date \_\_\_\_\_

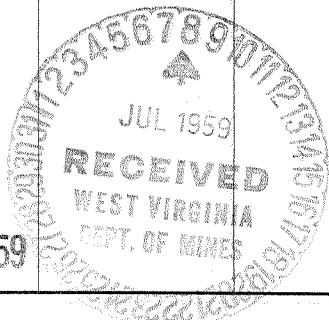
COAL WAS ENCOUNTERED AT \_\_\_\_\_ FEET \_\_\_\_\_ INCHES  
 \_\_\_\_\_ FEET \_\_\_\_\_ INCHES \_\_\_\_\_ FEET \_\_\_\_\_ INCHES  
 \_\_\_\_\_ FEET \_\_\_\_\_ INCHES \_\_\_\_\_ FEET \_\_\_\_\_ INCHES

RESULT AFTER TREATMENT \_\_\_\_\_

ROCK PRESSURE AFTER TREATMENT \_\_\_\_\_

Fresh Water \_\_\_\_\_ Feet Salt Water \_\_\_\_\_ Feet

Formation	Color	Hard or Soft	Top	Bottom	Oil, Gas or Water	Depth	Remarks
Cow Run Sand	White	Sugar	835	876	Oil		



NOV 5 1959

(over)