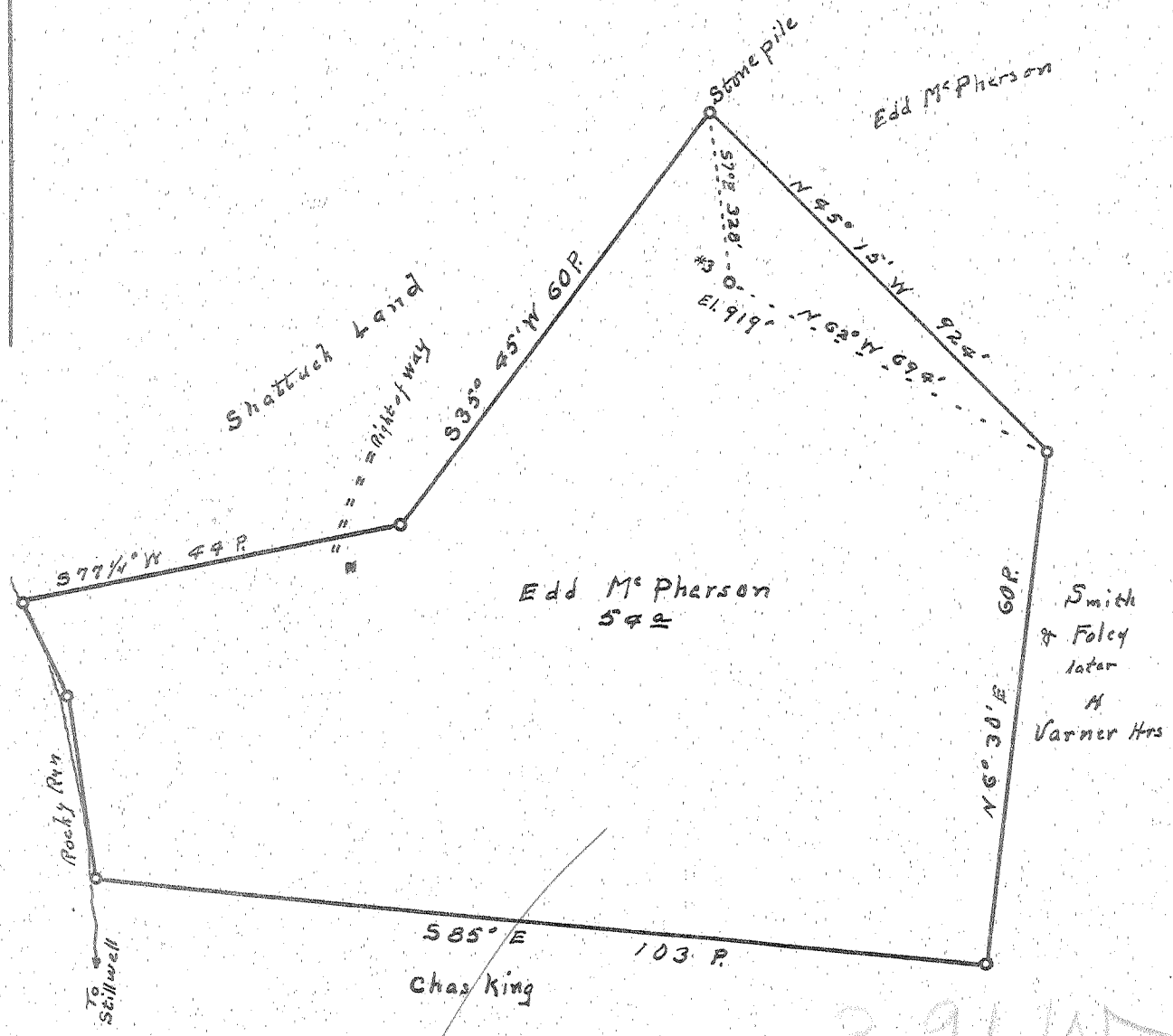


Latitude 39° 15'

Longitude 81° 20'



- New Location..
- Drill Deeper.....
- Abandonment.....

MAR - 1 1954

3.91 W
0.74

Company Clyde McPeak
 Address Route 1, Davisville, W.Va.
 Farm Edd McPherson
 Tract _____ Acres 59 Lease No. _____
 Well (Farm) No. 3 Serial No. _____
 Elevation (Spirit Level) 919'
 Quadrangle Elizabeth
 County Wood District Walker
 Engineer Robert R. Anderson
 Engineer's Registration No. 236
 File No. _____ Drawing No. _____
 Date _____ Scale 1 in = 20 Poles

STATE OF WEST VIRGINIA
 DEPARTMENT OF MINES
 OIL AND GAS DIVISION
 CHARLESTON

WELL LOCATION MAP
 FILE NO. W00-614-A

+ Denotes location of well on United States Topographic Maps, scale 1 to 62,500, latitude and longitude lines being represented by border lines as shown.
 - Denotes one inch spaces on border line of original tracing.