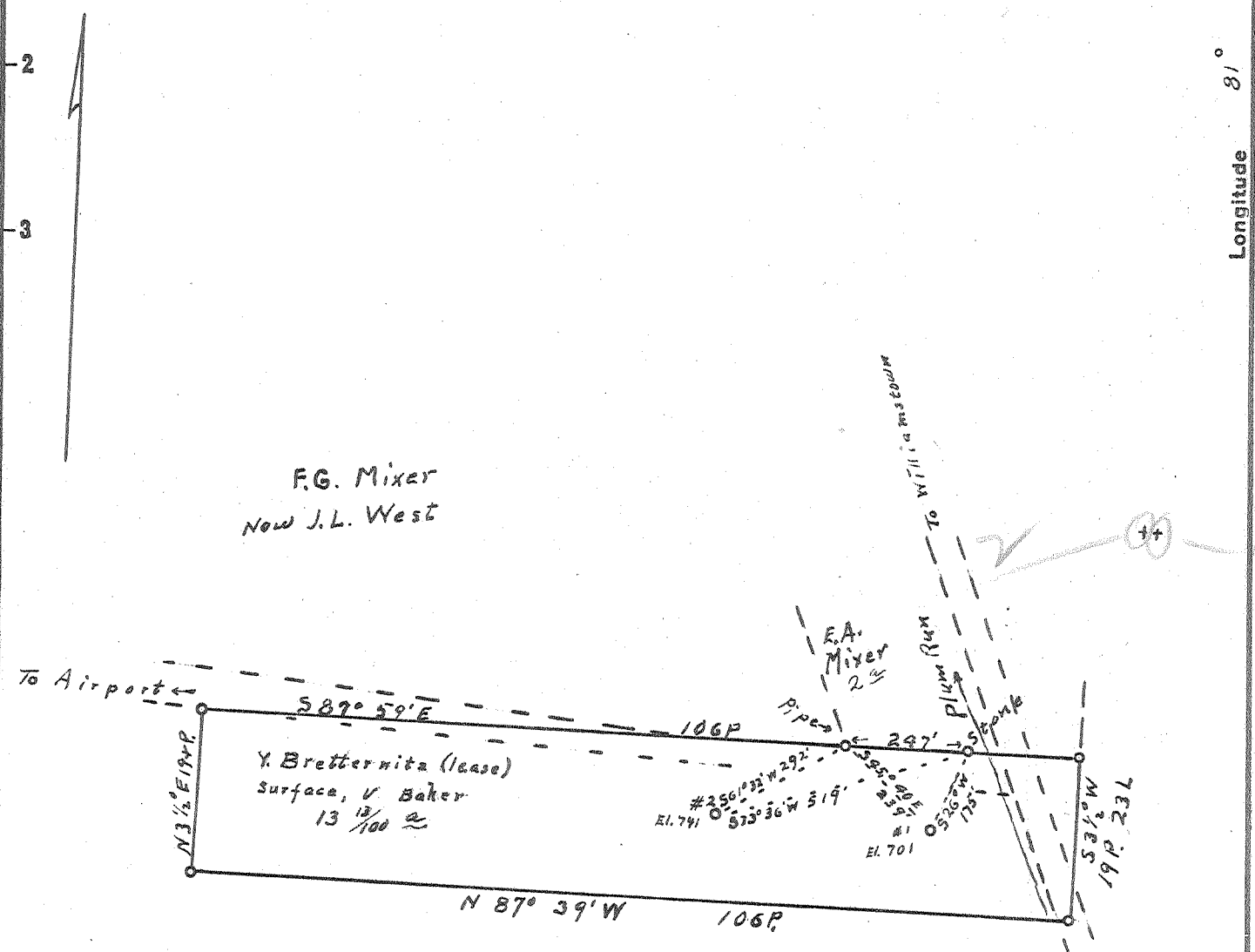


Latitude 39° 25'

Longitude 81° 25'



F.G. Mixer
Now J.L. West

Y. Bretternitz (lease)
surface, V. Baker
13 13/100 ac

#1	0.55 W
	4.18 R
#2	0.62 W
	4.79 R

Grow & Dacher
To
County Court of Wood Co.

- New Location...
- Drill Deeper.....
- Abandonment.....

REC 2 1953

Company Tri County Producing Co
 Address Parthorsburg, W.Va.
 Farm V. Bretternitz (lease) now V. Baker
 Tract _____ Acres 13 13/100 Lease No. _____
 Well (Farm) No. 1 & 2 Serial No. _____
 Elevation (Spirit Level) (1) 701, (2) 741
 Quadrangle Marietta
 County Wood District Williams
 Engineer Robert R. Anderson
by O. Incredith
 Engineer's Registration No. 296
 File No. _____ Drawing No. _____
 Date 11/22 53 Scale 1 in 20 Poles

STATE OF WEST VIRGINIA
DEPARTMENT OF MINES
OIL AND GAS DIVISION
CHARLESTON

WELL LOCATION MAP

FILE NO. WOO-609-A-#1
WOO-610-A-#2

+ Denotes location of well on United States Topographic Maps, scale 1 to 62,500, latitude and longitude lines being represented by border lines as shown.

- Denotes one inch spaces on border line of original tracing.

V. BRETTJERNITZ (V. BAKER) NOS. 1 & 2 - TRI-COUNTY PROD. CO. - WOO-609-A & 610-A