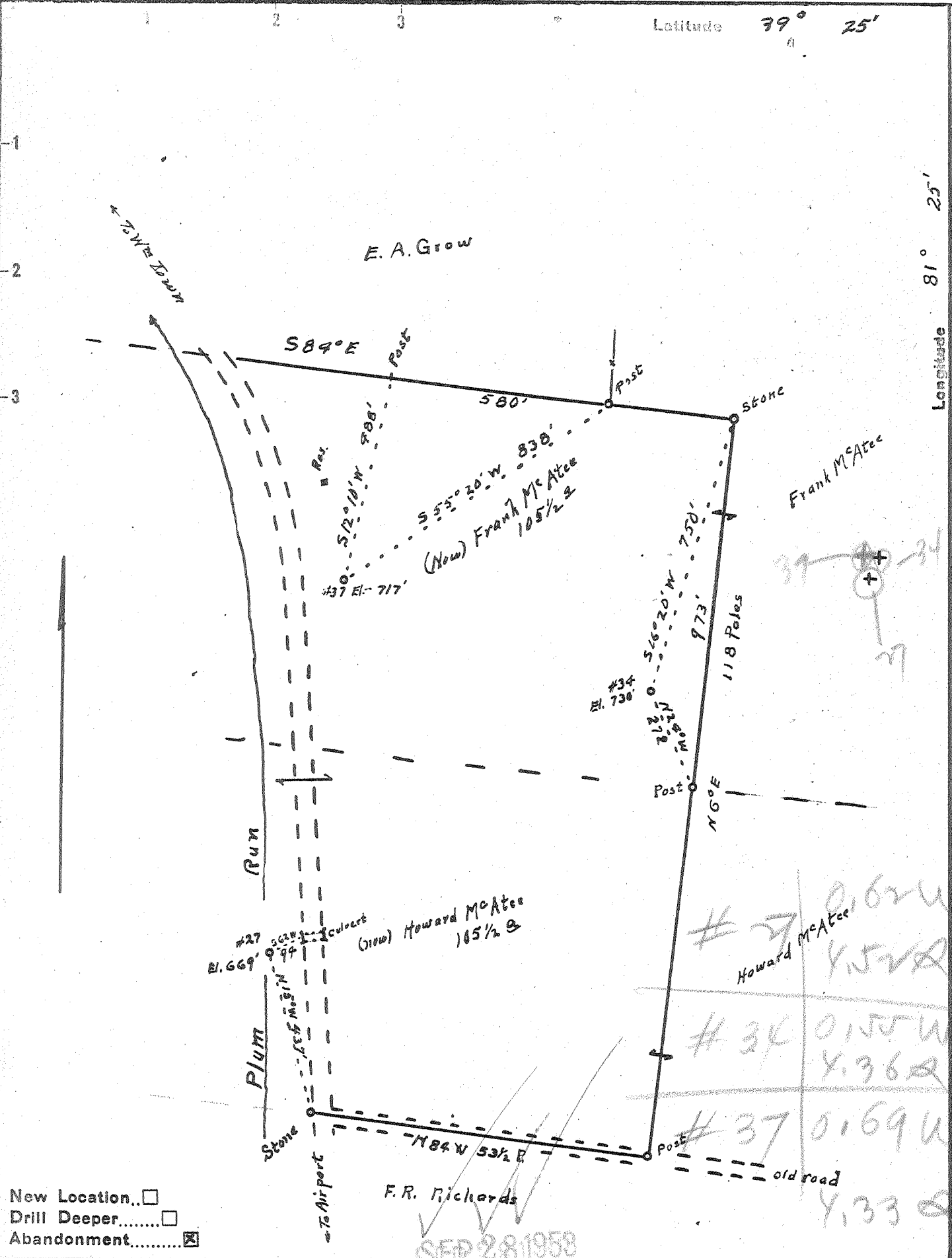


Latitude 39° 25'

Longitude 81° 25'



New Location..
 Drill Deeper.....
 Abandonment.....

Company Tri County Producing Co.
 Address Parkersburg W.Va.
 Farm once Dora McAtee 93a, new E.H. McAtee 105 1/2 a each
 Tract _____ Acres 93 Lease No. _____
 Well (Farm) No. 27, 34, 37 Serial No. _____
 Elevation (Spirit Level) 669' 730' 717'
37 34 37
 Quadrangle Marietta
 County Weed District Union
 Engineer Robert R. Anderson
by Meredith
 Engineer's Registration No. 296
 File No. _____ Drawing No. _____
 Date Sept 7 53 Scale 1 in = 20 Poles

STATE OF WEST VIRGINIA
 DEPARTMENT OF MINES
 OIL AND GAS DIVISION
 CHARLESTON

WELL LOCATION MAP

FILE NO. W00-588-A-#27
W00-589-A-#34
W00-590-A-#37

+ Denotes location of well on United States Topographic Maps, scale 1 to 62,500, latitude and longitude lines being represented by border lines as shown.

- Denotes one inch spaces on border line of original tracing.

DORA McATEE Nos. 27, 34 & 37 -
 (now F. & H. McAtee)
 TRI-COUNTY PROD Co.,
 W00-588-589-590-A