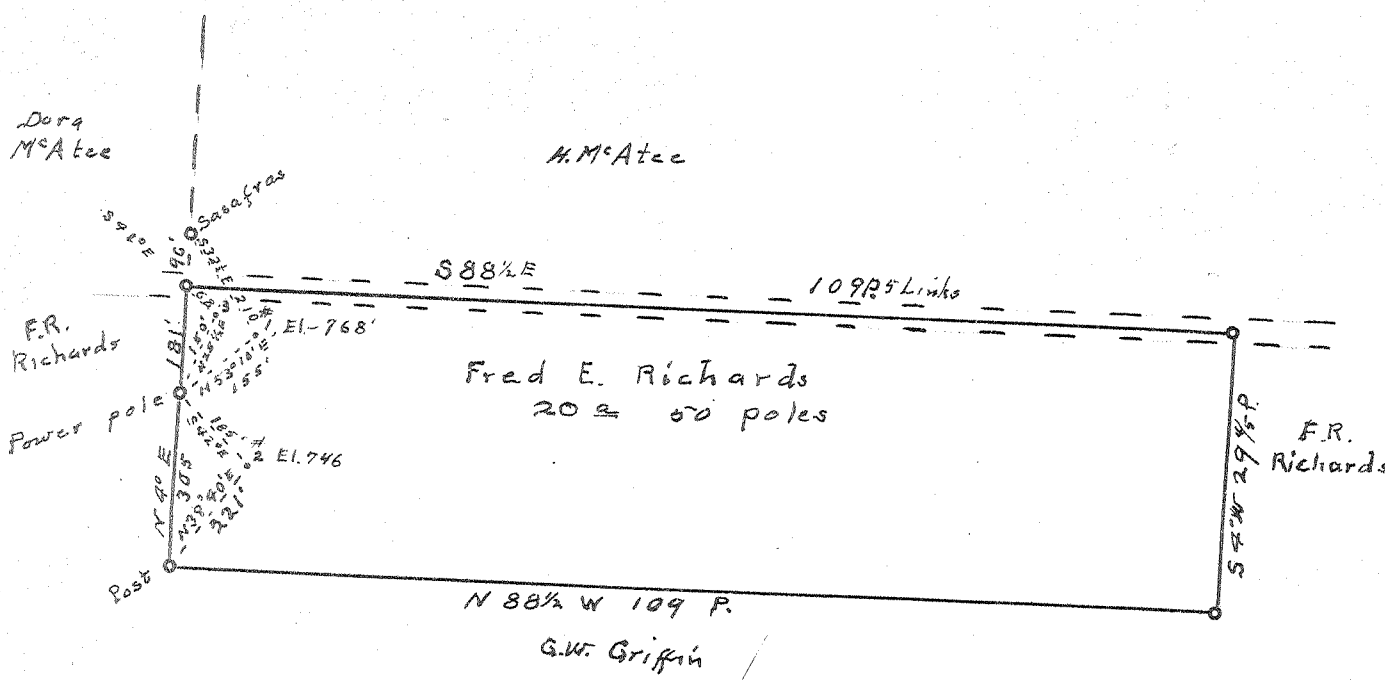


Latitude 39° 25'

Longitude 81° 25'



New Location..   
 Drill Deeper.....   
 Abandonment.....

Which one? 0.37 W  
 ✓ ✓ JUL 13 1953 4.6 ✓

Company Tri County Producing Co.  
 Address Parkersburg, W.Va.  
 Farm Fred E. Richards  
 Tract \_\_\_\_\_ Acres 20 ± Lease No. \_\_\_\_\_  
 Well (Farm) No. 1, 2, 3 Serial No. \_\_\_\_\_  
 Elevation (Spirit Level) 768 <sup>(1)</sup> 746 <sup>(2)</sup> 766 <sup>(3)</sup>  
 Quadrangle Marietta  
 County Wood District Union  
 Engineer Robert R. Andersson  
 Engineer's Registration No. 296  
 File No. \_\_\_\_\_ Drawing No. \_\_\_\_\_  
 Date 6/18 53 Scale 1 in = 20 poles

STATE OF WEST VIRGINIA  
 DEPARTMENT OF MINES  
 OIL AND GAS DIVISION  
 CHARLESTON

WELL LOCATION MAP  
 FILE NO. W00-562-A-#1  
W00-563-A-#2  
W00-564-A-#3

+ Denotes location of well on United States Topographic Maps, scale 1 to 62,500, latitude and longitude lines being represented by border lines as shown.  
 - Denotes one inch spaces on border line of original tracing.

FRED E. RICHARDS MS. 1, 2 & 3 - TRI-COUNTY PROD. CO., W00-5623A