

Latitude 39° 20'

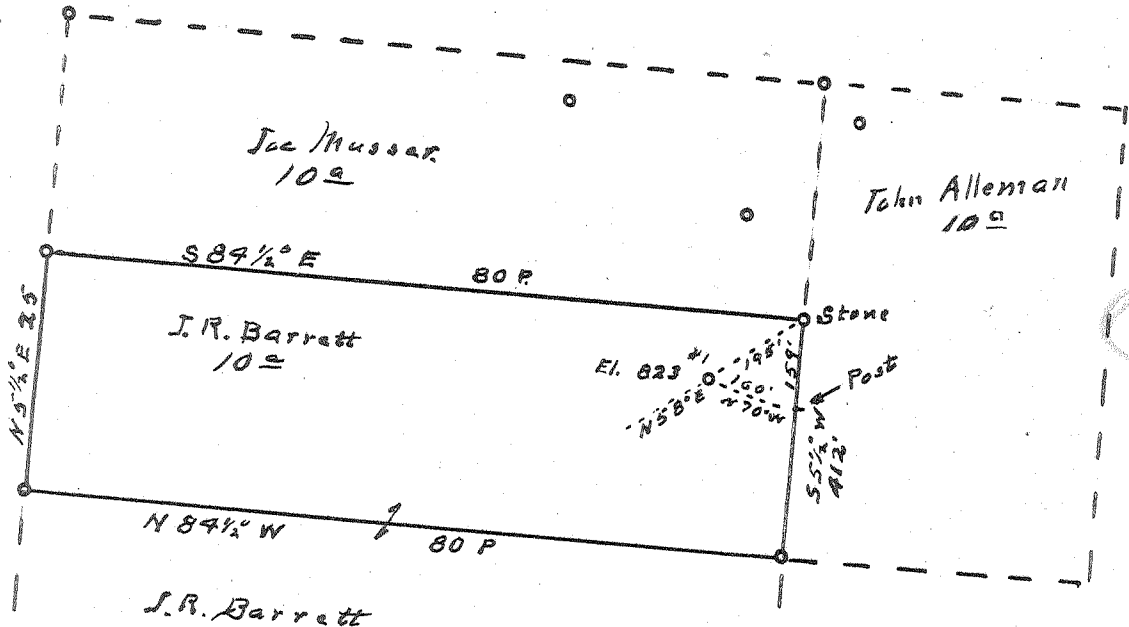
Longitude 81° 25'

H.S. Dye

Jac Mussar  
10<sup>a</sup>

John Alleman  
10<sup>a</sup>

El.  
Mussar



Stone Post  
El. 823  
N 58° E 100'  
N 70° W 150'

New Location...   
Drill Deeper...   
Abandonment...

JUN 29 1953

0.38 W  
VVOV

Company Clyde McPeck  
 Address Rt. Davisville, W.Va.  
 Farm J.R. Barrett  
 Tract \_\_\_\_\_ Acres 10 Lease No. \_\_\_\_\_  
 Well (Farm) No. 1 Serial No. \_\_\_\_\_  
 Elevation (Spirit Level) 823'  
 Quadrangle Marietta  
 County Wood District Union  
 Engineer Robert R. Anderson  
 Engineer's Registration No. 296  
 File No. \_\_\_\_\_ Drawing No. \_\_\_\_\_  
 Date May 7 Scale 1 in = 20 Poles

STATE OF WEST VIRGINIA  
DEPARTMENT OF MINES  
OIL AND GAS DIVISION  
CHARLESTON

WELL LOCATION MAP  
FILE NO. W00-561-A

+ Denotes location of well on United States Topographic Maps, scale 1 to 62,500, latitude and longitude lines being represented by border lines as shown.

- Denotes one inch spaces on border line of original tracing.

J. R. BARRETT No. 1 - CLYDE MCPEEK - W00-561-A