

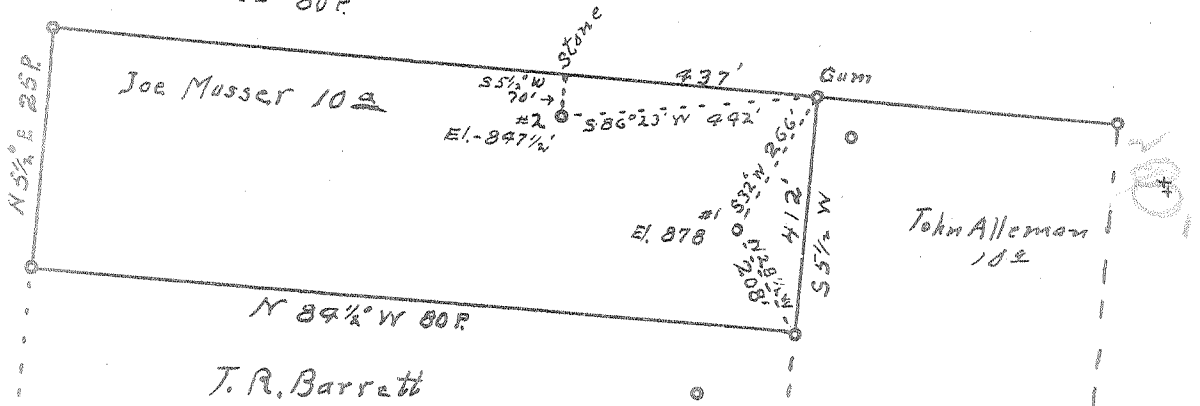
Latitude 39° 20'

Longitude 81° 25'

H.S. Dye

S 84 1/2° E 80 P.

Eli. Musser



Joe Musser 10A

Gum

55 1/2° W 70' #2 El. 847 1/2

El. 878

John Alteman 10A

N 84 1/2° W 80 P.

T.R. Barrett

#1 0.39 W  
v.s. A

#2 0.40 W  
v.s. A

New Location...   
 Drill Deeper...   
 Abandonment...

JUN 8 1953

Company Clyde McPeck  
 Address Rt Davisville W. Va.  
 Farm Joe Musser  
 Tract \_\_\_\_\_ Acres 10 Lease No. \_\_\_\_\_  
 Well (Farm) No. 2 & 1 Serial No. \_\_\_\_\_  
 Elevation (Spirit Level) 847 1/2; 878  
 Quadrangle Marietta  
 County Wood District Union  
 Engineer Robert R. Anderson  
 Engineer's Registration No. 296  
 File No. \_\_\_\_\_ Drawing No. \_\_\_\_\_  
 Date 5/14 53 Scale 1 in = 20 Poles

STATE OF WEST VIRGINIA  
 DEPARTMENT OF MINES  
 OIL AND GAS DIVISION  
 CHARLESTON

WELL LOCATION MAP

FILE NO. W00-559-A-#1  
W00-560-A-#2

+ Denotes location of well on United States Topographic Maps, scale 1 to 62,500, latitude and longitude lines being represented by border lines as shown.

- Denotes one inch spaces on border line of original tracing.