

Latitude 1 20

Longitude 81 20



Floyd Peters.

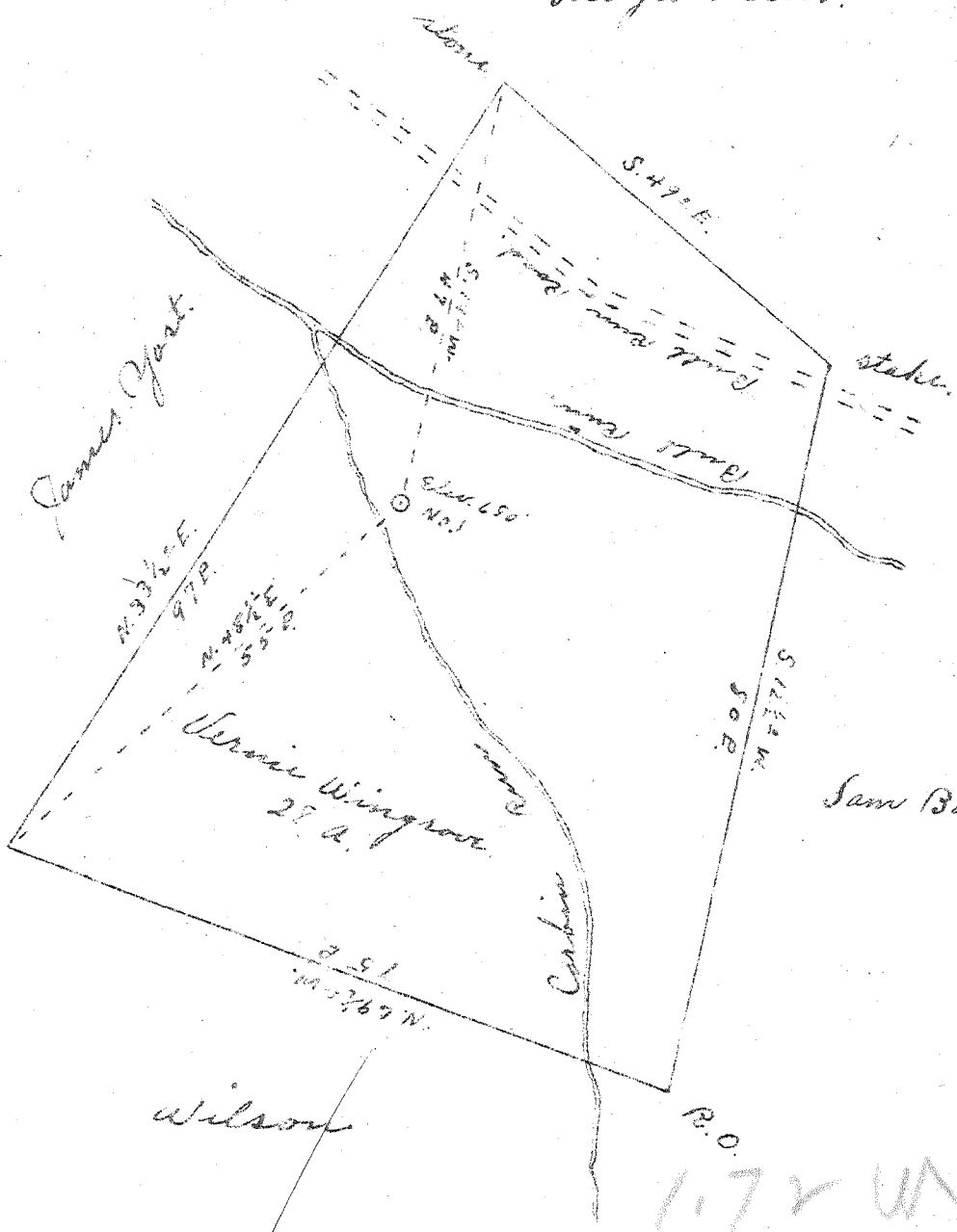
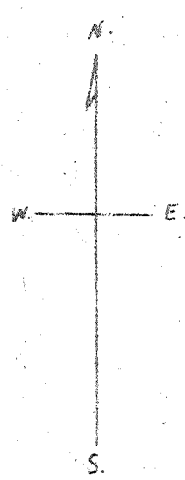
James Grant.

Sam Bond.

Wilson

1.72 UN  
1.99 L

SEP 16 1948



- New Location
- Drill Deeper
- Abandonment

Company	B. H. Nelson
Address	Waverly W. Va.
Farm	Vernie Wingrove
Tract	Acres 28 Lease No.
Well (Farm) No.	1. Serial No.
Elevation (Spirit Level)	680'
Quadrangle	Maritza
County	Wood District Ohio
Engineer	Joe Triplett
Engineer's Registration No.	
File No.	Drawing No.
Date	June 18, 1948 Scale 1" = 20'

STATE OF WEST VIRGINIA  
DEPARTMENT OF MINES  
OIL AND GAS DIVISION  
CHARLESTON

WELL LOCATION MAP  
FILE NO. WOO-288-A

+ Denotes location of well on United States Topographic Maps, scale 1 to 62,500, latitude and longitude lines being represented by longer lines as shown.

- Denotes one inch spaces on border line of original tracing.

IMPERIAL TRADING CO. INC.  
K & F CO., N. Y.



STATE OF WEST VIRGINIA  
DEPARTMENT OF MINES  
OIL AND GAS DIVISION

764

WELL RECORD

Permit No. \_\_\_\_\_ Oil or Gas Well Oil  
(KIND)

Company B. H. Nelson  
 Address 240 S. Broad St. Morgantown  
 Farm Union Vinegrove Acres 23  
 Location (waters) Bull Run  
 Well No. \_\_\_\_\_ Elev. \_\_\_\_\_  
 District Union County Hood Co  
 The surface of tract is owned in fee by V. Vinegrove  
 Address 7672  
 Mineral rights are owned by S. S. Corbin/Kearns  
 Address 7672  
 Drilling commenced 1895  
 Drilling completed 1795  
 Date Shot \_\_\_\_\_ From \_\_\_\_\_ To \_\_\_\_\_  
 With \_\_\_\_\_  
 Open Flow \_\_\_\_\_ /10ths Water in \_\_\_\_\_ Inch  
 \_\_\_\_\_ /10ths Merc. in \_\_\_\_\_ Inch  
 Volume \_\_\_\_\_ Cu. Ft.  
 Rock Pressure \_\_\_\_\_ lbs. \_\_\_\_\_ hrs.  
 Oil 5 Bbls bbls., 1st 24 hrs.  
 Fresh water \_\_\_\_\_ feet \_\_\_\_\_ feet  
 Salt water 1600 feet 1640 feet

Casing and Tubing	Used in Drilling	Left in Well	Packers
Size			Kind of Packer
16			
13			
10			Size of
8 1/4			
6 5/8			Depth set
5 3/16			
3 1/8	<u>1700</u>	<u>1700</u>	Perf. top
2 2060	<u>2060</u>	<u>2060</u>	Perf. bottom
Liners Used			Perf. top
			Perf. bottom

CASING CEMENTED \_\_\_\_\_ SIZE \_\_\_\_\_ No. Ft. \_\_\_\_\_ Date \_\_\_\_\_

COAL WAS ENCOUNTERED AT \_\_\_\_\_ FEET \_\_\_\_\_ INCHES  
 \_\_\_\_\_ FEET \_\_\_\_\_ INCHES \_\_\_\_\_ FEET \_\_\_\_\_ INCHES  
 \_\_\_\_\_ FEET \_\_\_\_\_ INCHES \_\_\_\_\_ FEET \_\_\_\_\_ INCHES

Formation	Color	Hard or Soft	Top	Bottom	Oil, Gas or Water	Depth Found	Remarks
Rock	Red	Soft	35	55		33	
Slate	White		55	75		55	
Rock	Red		75	105		75	
Rock	Soft		105	130		105	
Slate	White		130	175		130	
Rock	Red		175	365			
Rock	Red		365	425			
Rock	Red		425	610			
Sand	White		610	615			
Sand & Slate	colored	Hard	615	1034			Some water
Sand	White	Hard	1034	1064			
Slate	White		1064	1240			
Sand	White		1240	1250	shiny oil		shiny oil
Slate	White	Soft	1250	1410	1 Oil		
Sand	White	Hard	1410	1650			
Sand	White	Hard	1600	1640	water		
Prime	Gray	Hard	1640	1665			
Slate	Black	Soft	1665	1957			
Slate	Black	Soft	1957	2060			
Sand	White	Hard	2060	2060	oil		5 Bbl