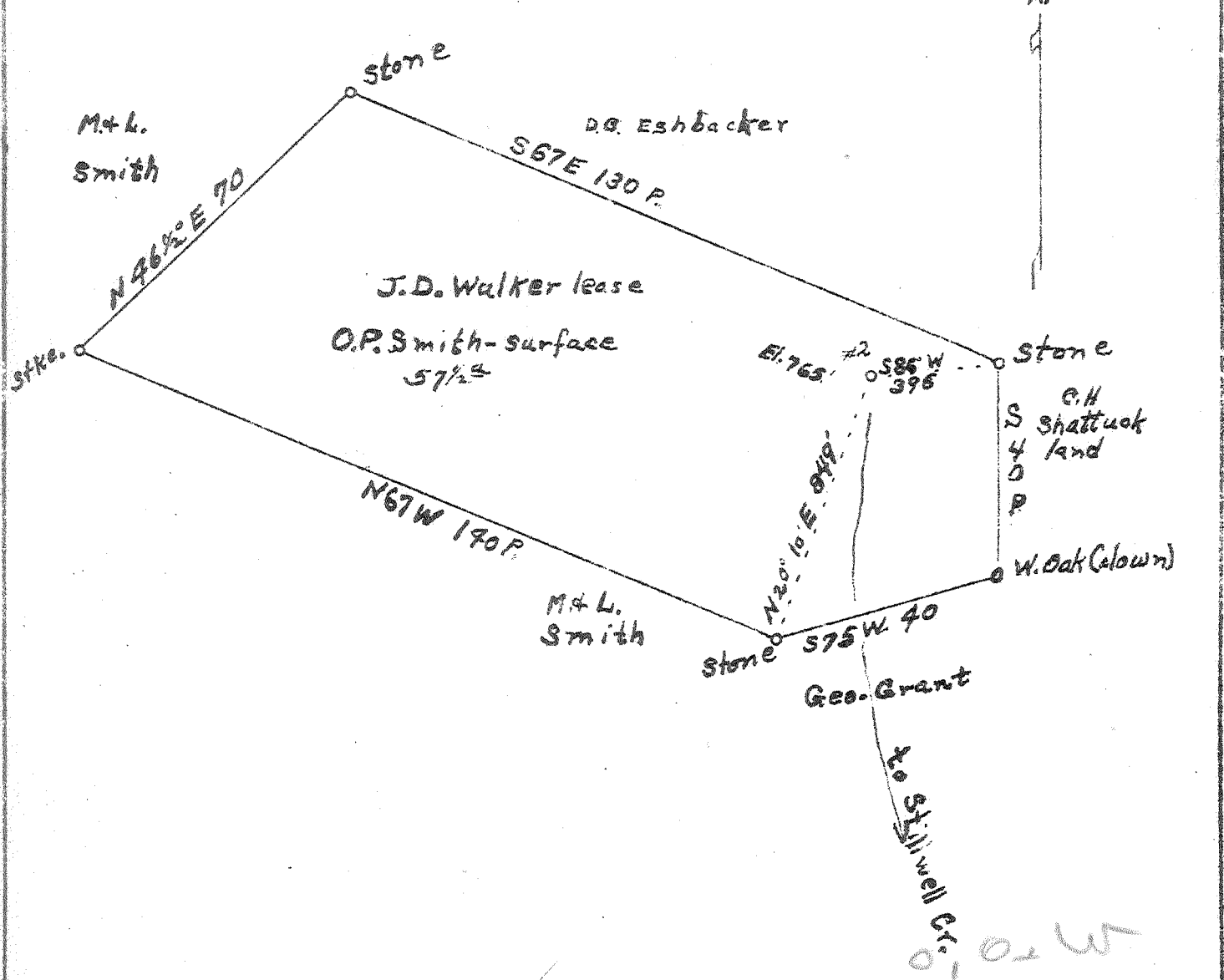


Latitude $36^{\circ} 15'$
 Longitude $81^{\circ} 25'$



location on sheet

New Location
 Drill Deeper
 Abandonment

✓ AUG 19 1947

0.84 $\frac{1}{2}$

Company Smith, Piersol, Feick & Cass.
 Address R.D. #2 Walker, W. Va.
 Farm O. P. Smith
 Tract Acres 5 7/8 Lease No. _____
 Well (Farm) No. 2 (two) Serial No. _____
 Elevation (Spirit Level) 765'
 Quadrangle Elizabeth
 County Wood District WALKER
 Engineer O. Meredith
 Engineer's Registration No. _____
 File No. _____ Drawing No. _____
 Date Aug 6 47 Scale 1 in = 30 Poles

STATE OF WEST VIRGINIA
 DEPARTMENT OF MINES
 OIL AND GAS DIVISION
 CHARLESTON

WELL LOCATION MAP
 FILE NO. W00-262-A

+ Denotes location of well on United States Topographic Maps, scale 1 to 62,500, latitude and longitude lines being represented by border lines as shown.

- Denotes one inch spaces on border line of original tracing.