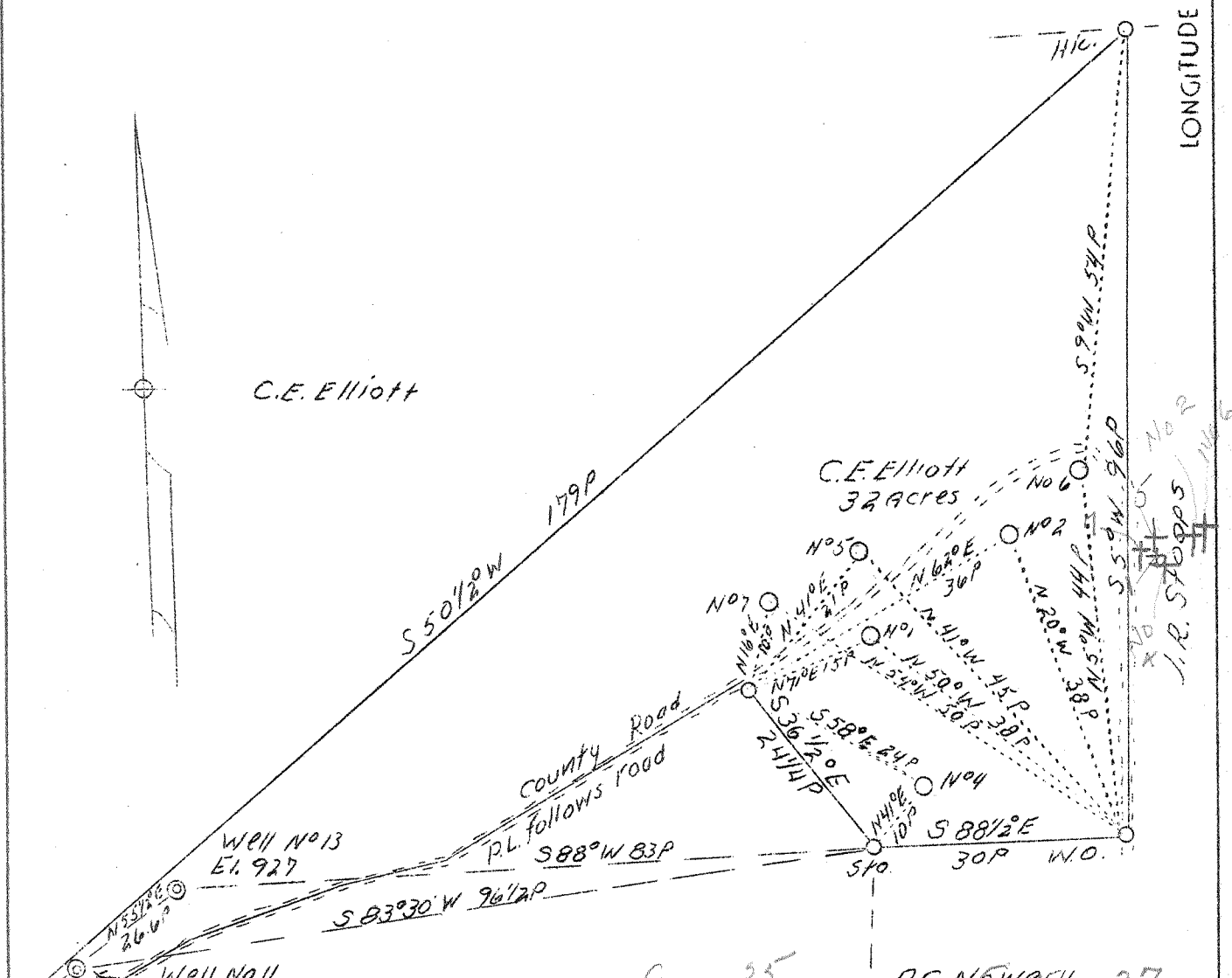


LATITUDE 39° 20'

LONGITUDE 81° 25'



Well No. 13 Ei. 927			
Well No. 11 Ei. 915.0			
N 59° E 10.6 P			
	(149) 1	{ W - .35 S - 5.13	R.S. Nowary, 37 5 { S - 5.
Gertrude Elliott	(150) 2	{ W - .14 S - 5.	6 { W - .08 S - 4.95
	(151) 4	{ W - .32 S - 5.18	7 { W - .45 S - 5.1

A.B.D.

Company C. T. Feick  
 Address Walker, W. Va. (R-2)  
 Farm C. E. Elliott  
 Acres 32  
 Well (Farm) No. 1-2-4-5-6-7  
 Elevation (SL) 1-863 2-900 4-858  
 5-896 6-910 7-893  
 Quadrangle Marietta S.W.  
 County Wood  
 District Union  
 Engineer J. E. Anderson  
 Engineer's Reg. Surveyor  
 Date August 20, 1938  
 Scale 1" = 20 poles

STATE OF WEST VIRGINIA  
 Department of Mines  
 OIL & GAS DIVISION  
 Charleston

WELL LOCATION MAP  
 File No. 149-154-A  
 #1 thru #7

x Denotes location of well on U. S. Topographic Maps, scale 1 to 62,500, latitude and longitude lines being represented by border lines as shown.

- Denotes one inch spaces on border line of original tracing.