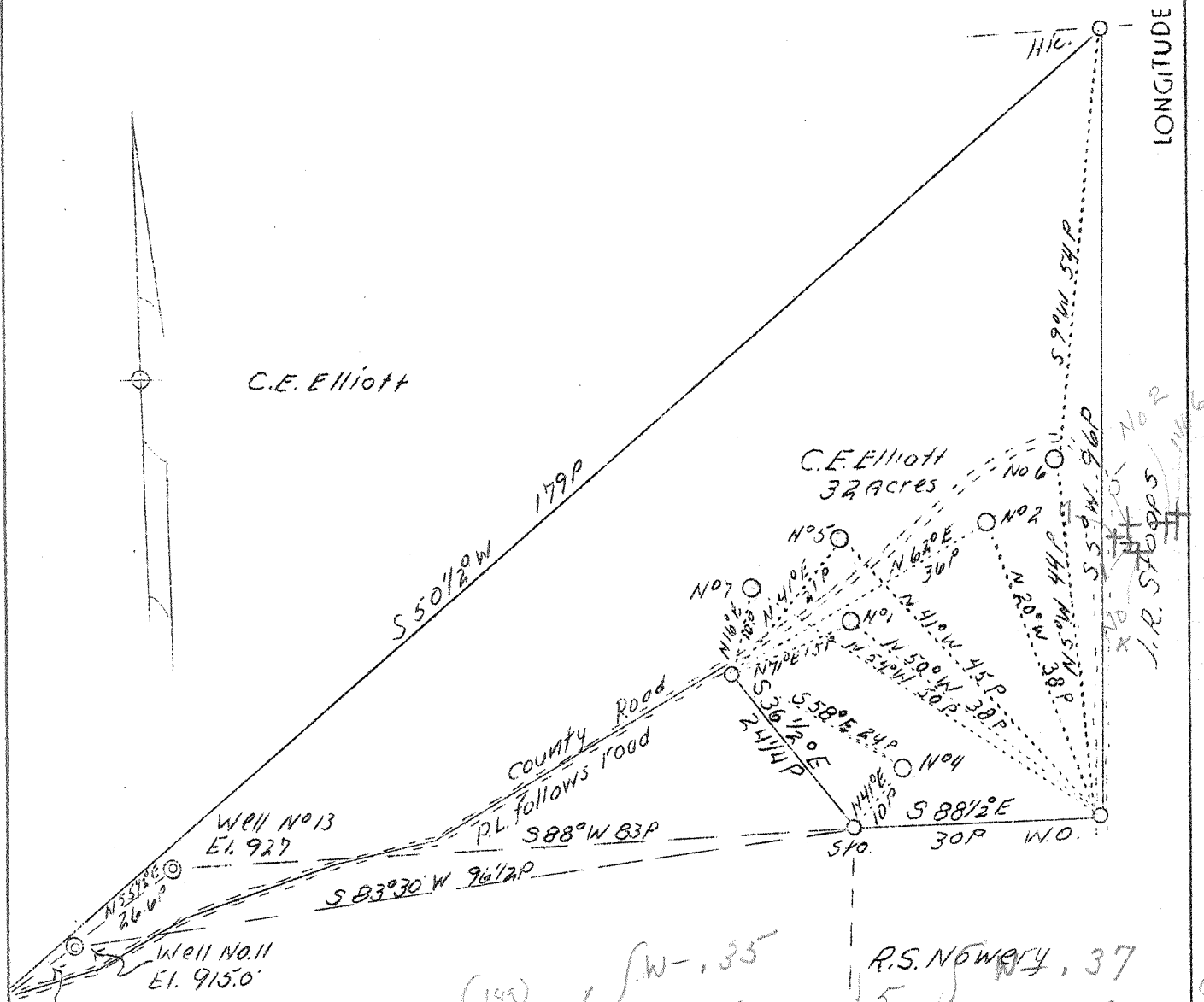


LATITUDE 39° 20'

LONGITUDE 81° 25'



C.E. Elliott

C.E. Elliott  
32 ACRES

Well No. 13  
Ei. 927

Well No. 11  
Ei. 915.0

N 39° E  
10.6 P

Gertrude Elliott

|       |   |            |                 |       |
|-------|---|------------|-----------------|-------|
| (149) | 1 | { W - .35  | R.S. NOWERY, 37 | (152) |
|       |   | { S - 5.13 | 5 { S - 5.      |       |
| (150) | 2 | { W - .14  | 6 { W - .08     | (153) |
|       |   | { S - 5.   | { S - 4.95      |       |
| (151) | 4 | { W - .32  | 7 { W - .45     | (154) |
|       |   | { S - 5.18 | { S - 5.1       |       |

A.B.D.

Company C. T. Feick  
 Address Walker, W. Va. (R-2)  
 Farm C. E. Elliott  
 Acres 32  
 Well (Farm) No. 1-2-4-5-6-7  
 Elevation (SL) 1-863 2-900 4-858  
 5-896 6-910 7-893  
 Quadrangle Marietta S.W.  
 County Wood  
 District Union  
 Engineer J. E. Anderson  
 Engineer's Reg. Surveyor  
 Date August 20, 1938  
 Scale 1" = 20 poles

STATE OF WEST VIRGINIA  
 Department of Mines  
 OIL & GAS DIVISION  
 Charleston

WELL LOCATION MAP  
 File No. 149-154-A  
 #1 thru #7

x Denotes location of well on U. S. Topographic Maps, scale 1 to 62,500, latitude and longitude lines being represented by border lines as shown.

- Denotes one inch spaces on border line of original tracing.