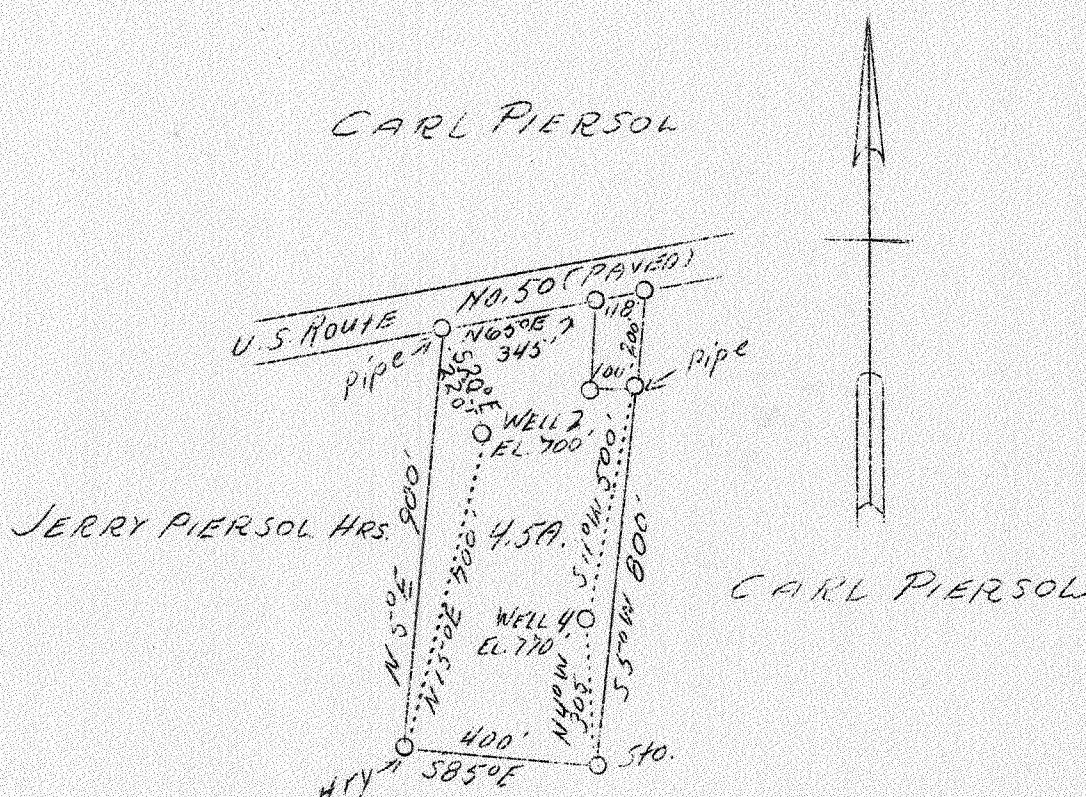


LATITUDE 39° 15'

2 74

LONGITUDE 81° 25'

CARL PIERSON



ELZA GREENT

#2

0.92 W
1.1 Q

#4

0.89 W
1.18 Q

ABD.

JUL 17 1939

Company Bertha E. Lee
 Address Davisville, W. Va.
 Farm V. L. Hupp
 Acres 4.5
 Well (Farm) No. 2 and 4
 Elevation (SL) 2-700 4-770
 Quadrangle Elizabeth
 County Wood
 District Clay
 Engineer J. E. Anderson
 Eng. Reg. No. Surveyor
 Date July 4, 1939
 Scale 1" = 400'

STATE OF WEST VIRGINIA
 Department of Mines
 OIL & GAS DIVISION
 Charleston

WELL LOCATION MAP

File No. 100-138-139-A

x Denotes location of well on U. S. Topographic Maps, scale 1 to 62,500, latitude and longitude lines being represented by border lines as shown.

- Denotes one inch spaces on border line of original tracing.

WEST VIRGINIA DEPARTMENT OF MINES
OIL AND GAS DIVISION

147

WELL RECORD

Hand
138-A
Permit No. *Elizabeth W.*

Oil or Gas Well.....
(Kind)

Company.....*North W. Lee*
Address.....*Davisville*
Farm.....*V. L. Hum* Acres.....
Location (waters).....*Stillwell Run*
Well No.....*2* Elev.....*700'*
District.....*Clay* County.....
The surface of tract is owned in fee by.....*V. L. Hum*
Address.....*Davisville*
Mineral rights are owned by.....*North W. Lee*
Address.....*Davisville*
Drilling commenced.....*about 25 years ago*
Drilling completed.....
Date shot..... Depth of shot.....
Open Flow /10ths Water in..... Inch
/10ths Merc. in..... Inch
Volume..... Cu. Ft.
Rock Pressure..... lbs..... hrs.
Oil..... bbls., 1st 24 hrs.
Fresh water..... feet..... feet
Salt water..... feet..... feet

Casing and Tubing	Used in Drilling	Left in Well	Packers
Size			
16.....			Kind of Packer.....
13.....			
10.....			Size of.....
8 1/4.....			
6 5/8.....			Depth set.....
5 3/16.....			
3.....			Perf. top.....
2.....			Perf. bottom.....
Liners Used.....			Perf. top.....
			Perf. bottom.....

CASING CEMENTED..... SIZE..... No. FT..... Date.....
COAL WAS ENCOUNTERED AT..... FEET..... INCHES
..... FEET..... INCHES..... FEET..... INCHES
..... FEET..... INCHES..... FEET..... INCHES

Formation	Color	Hard or Soft	Top	Bottom	Oil Gas or Water	Depth Found	Remarks
Clay			0000	80'			
Stone	blue	hard	80	105			
Clay			105	405			
Shale	gray	soft	405	445			
Clay			445	595			
Sand Stone		soft	595	665			
Shale	yellow		665	700			
Big Red Cave			700	790			
Cave	Yellow	soft	790	850			
Cave	Little Red		850	880			
Boulder		hard	880	890			
Shale			890	980			Top Cow B
Sand	2nd Cow Run		980	998	bottom of well		

