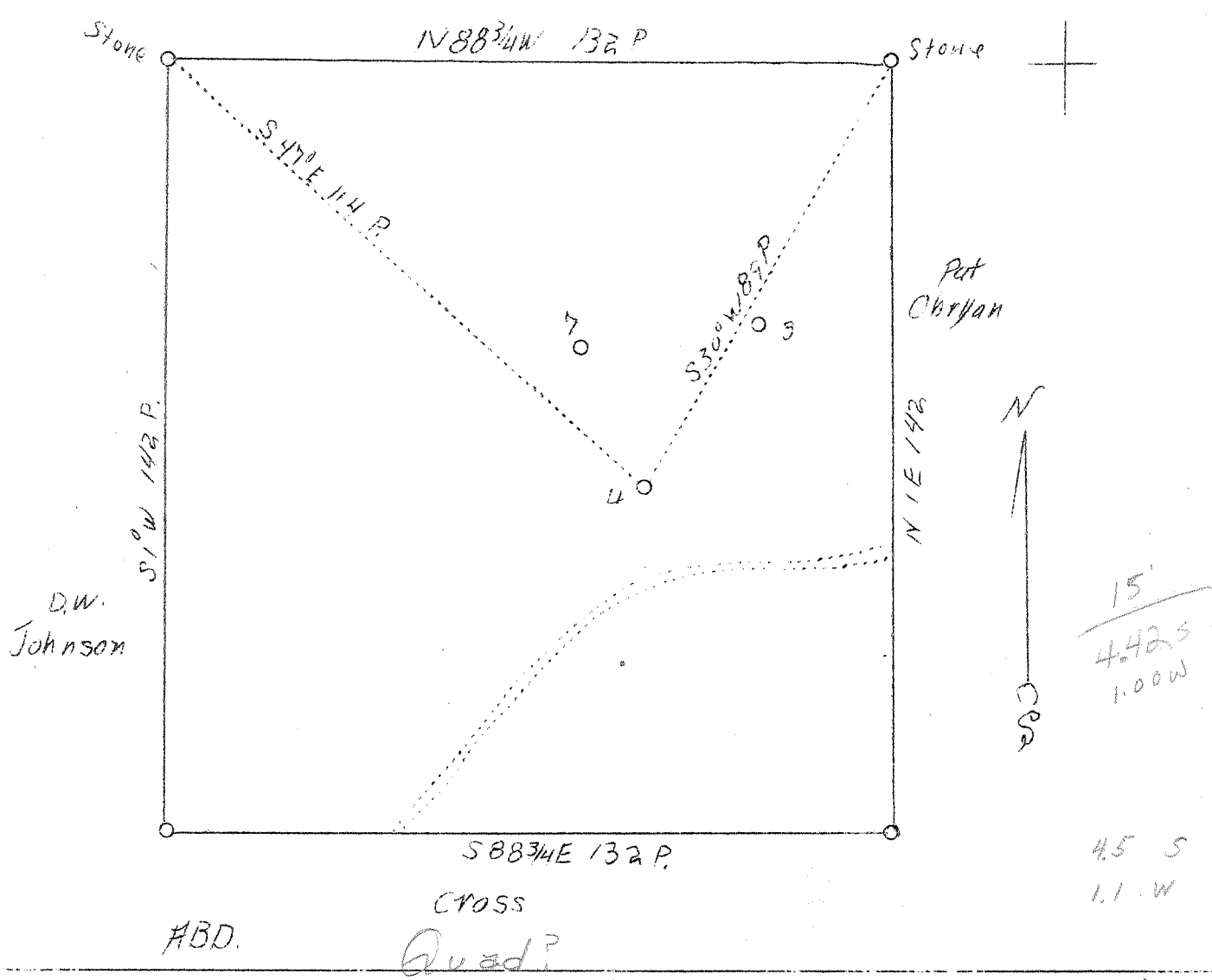


LATITUDE 39° 20'

LONGITUDE 81° 20'

Richardson



Company address Albert Congdon
 Parkersburg, W. Va.
 Farm Chas. A. Bartlett
 Acres 119
 Well (Farm) No. 4
 Elevation 894.4 (Spirit Level)
 Quadrangle Marietta
 County Wood
 District Union
 Engineer O. Meredith (Surveyor)
 Eng. Reg. No. -
 Date June 14
 Scale 1" = 30 poles

STATE OF WEST VIRGINIA
 Department of Mines
 OIL & GAS DIVISION
 Charleston

WELL LOCATION MAP

File No. Wood-121-A

X Denotes location of well on U. S. Topographic Maps, scale 1 to 62,500, latitude and longitude lines being represented by border lines as shown.

- Denotes one inch spaces on border line of original tracing.