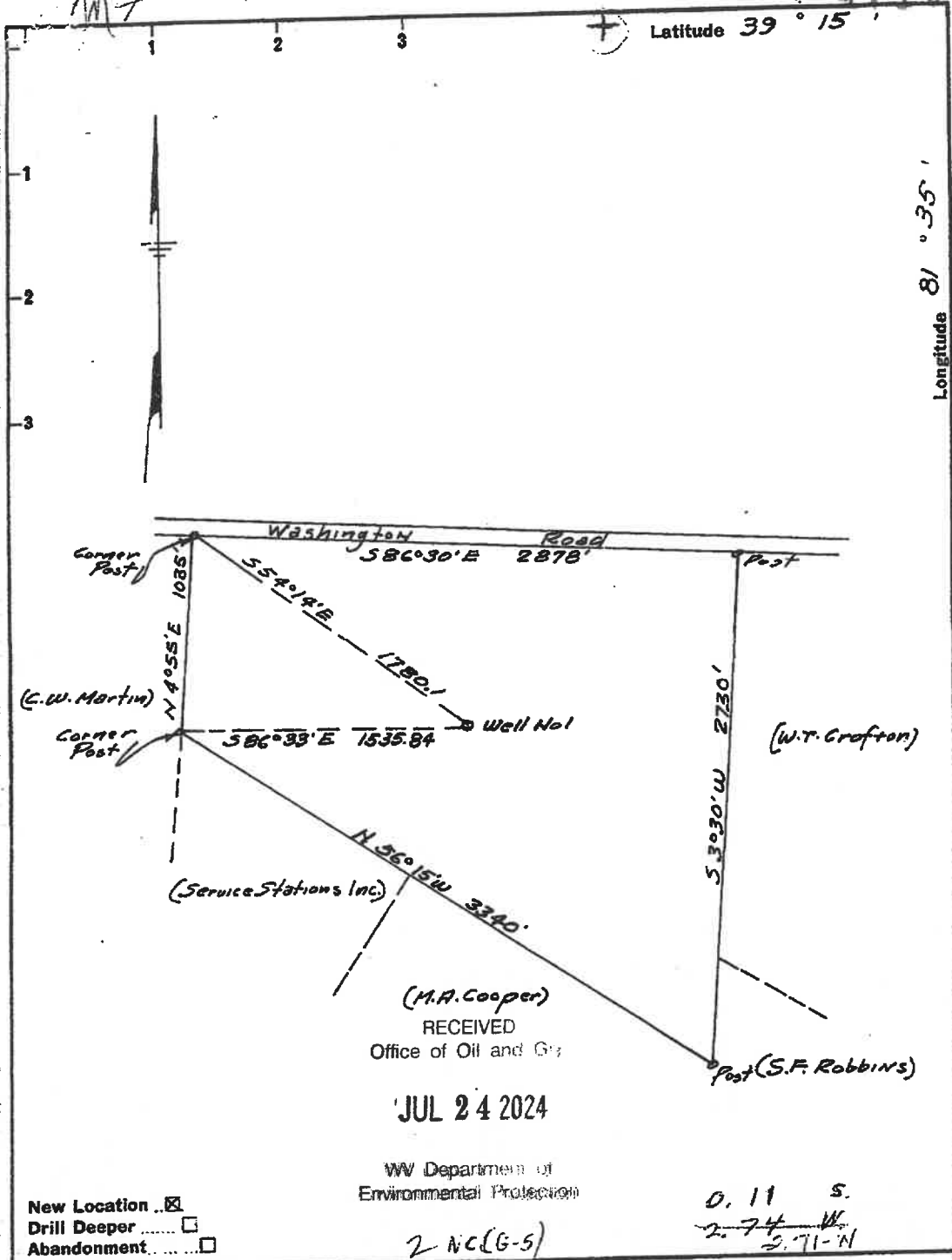


4710700493P



RECEIVED  
Office of Oil and Gas

JUL 24 2024

WV Department of Environmental Protection

New Location

Drill Deeper

Abandonment

2 NC(G-5)

0.11 S.  
 2.74 W.  
 2.71-N

Company UNION CARBIDE OLEFINS CO.  
 Address 90 KENNETH R. GOSNELL BLDG. 82  
South Charleston, W.Va. Room 932

Farm S.F. Robbins

Tract \_\_\_\_\_ Acres 125 Lease No. \_\_\_\_\_

Well (Farm) No. ONE Serial No. \_\_\_\_\_

Elevation (Spirit Level) 726

Quadrangle Belleville NC

County Wood District Lubeck

Engineer L.E. Merrill  
PARKERSBURG ENGR. CORP.

Engineer's Registration No. 152

File No. \_\_\_\_\_ Drawing No. \_\_\_\_\_

Date Sept 9, 1960 Scale 1" = 660'

STATE OF WEST VIRGINIA  
 DEPARTMENT OF MINES  
 OIL AND GAS DIVISION  
 CHARLESTON

**WELL LOCATION MAP**

FILE NO. W00-493

+ Denotes location of well on United States Topographic Maps, scale 1 to 62,500, latitude and longitude lines being represented by border lines as shown.

- Denotes one inch spaces on border line of original tracing.

45000  
M-F 150 IMPERIAL  
Samples

Deep Well

08/02/2024

