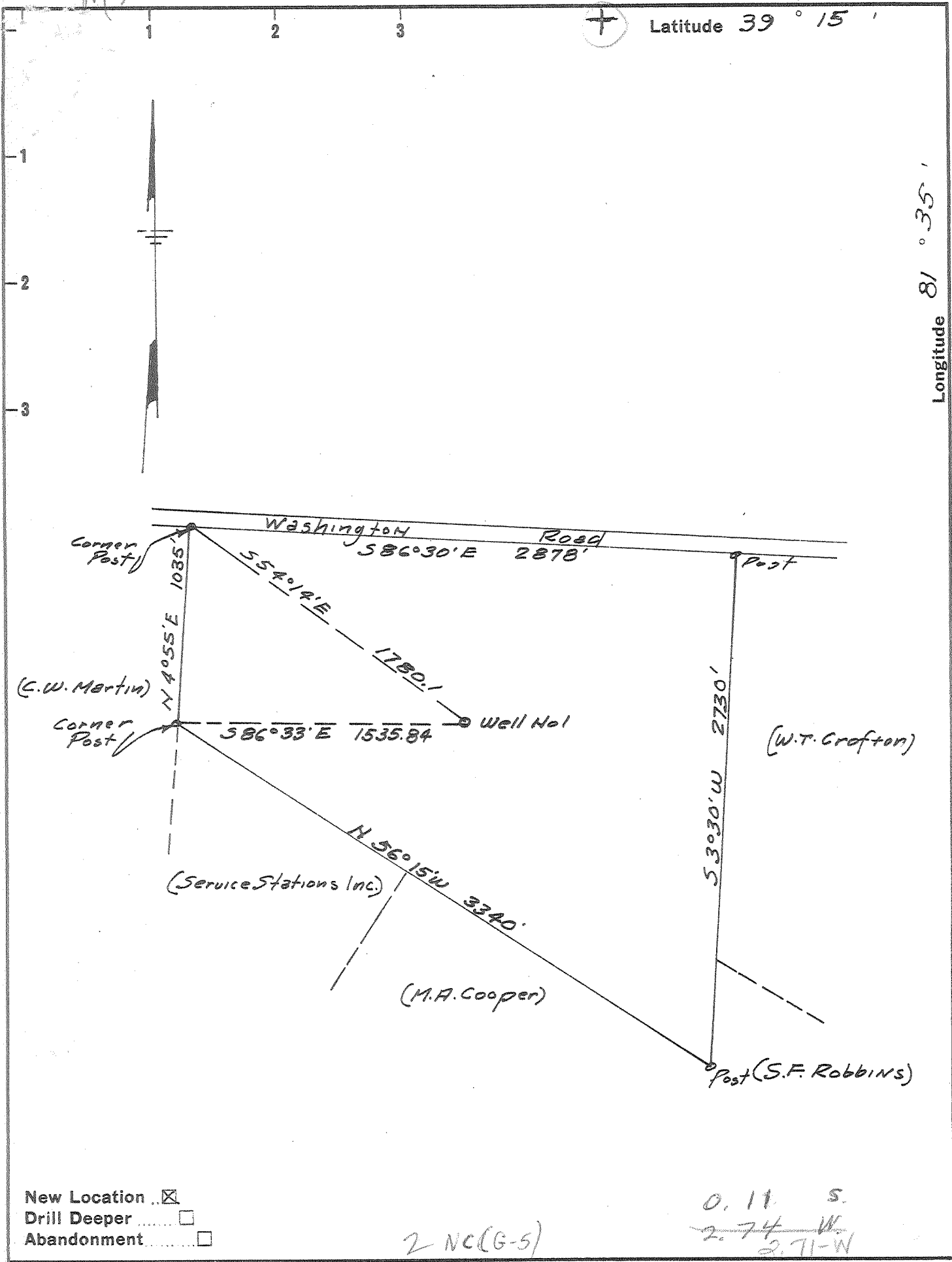


Latitude 39° 15'

Longitude 81° 35'



New Location
 Drill Deeper
 Abandonment

2 NC(G-5)

0.11 S.
~~2.74 W.~~
 2.71-W

Company UNION CARBIDE OLEFINS Co
 Address 90 KENNETH R. GOSNELL Bldg. B2
South Charleston, W. Va. Room 932
 Farm S.F. Robbins
 Tract _____ Acres 125 Lease No. _____
 Well (Farm) No. ONE Serial No. _____
 Elevation (Spirit Level) 726
 Quadrangle Belleville NC
 County Wood District Lubeck
 Engineer L.G. Merrill
DARKERSBURG ENGR. CORP.
 Engineer's Registration No. 152
 File No. _____ Drawing No. _____
 Date Sept 9, 1960 Scale 1" = 660'

STATE OF WEST VIRGINIA
 DEPARTMENT OF MINES
 OIL AND GAS DIVISION
 CHARLESTON

WELL LOCATION MAP
 FILE NO. W00-493

+ Denotes location of well on United States Topographic Maps, scale 1 to 62,500, latitude and longitude lines being represented by border lines as shown.
 - Denotes one inch spaces on border line of original tracing.

Samples

1-0

Deep Well



STATE OF WEST VIRGINIA
DEPARTMENT OF MINES
OIL AND GAS DIVISION 19

Quadrangle Belleville

Permit No. W00 -493

WELL RECORD

Oil or Gas Well Dry
(KIND)

Company Union Carbide Olefins Company
Address P. O. Box 8004, So. Chas., W. Va.
Farm S. F. Robbins, et al Acres 125
Location (waters) _____
Well No. 1, Serial No. 18-2 Elev. 726'
District Lubeck County Wood
The surface of tract is owned in fee by S. F. Robbins,
Lake Washington Road Address Parkersburg, W. Va.
Mineral rights are owned by Same
Address _____
Drilling commenced September 20, 1960
Drilling completed February 8, 1961
Date Shot _____ From _____ To _____
With _____
Open Flow /10ths Water in _____ Inch
/10ths Merc. in _____ Inch
Volume Show _____ Cu. Ft.
Rock Pressure _____ lbs. _____ hrs.
Oil Show _____ bbls., 1st 24 hrs.
WELL ACIDIZED _____

Casing and Tubing	Used in Drilling	Left in Well	Packers
Size			Kind of Packer
16	18'	18'	
13 3/8	83'	83'	
10 3/4	675'		Size of
8 1/4 5/8	1682'		
6 5/8			Depth set
5 3/16			
3 4-1/2"	4420'	4420'	Perf. top
2			Perf. bottom
Liners Used			Perf. top
			Perf. bottom

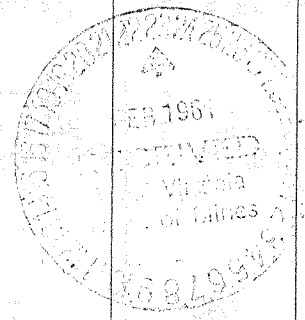
CASING CEMENTED 4-1/2 SIZE 220 No. Ft. 12/1/60 Date
46 sacks

COAL WAS ENCOUNTERED AT none FEET _____ INCHES
_____ FEET _____ INCHES FEET _____ INCHES
_____ FEET _____ INCHES FEET _____ INCHES

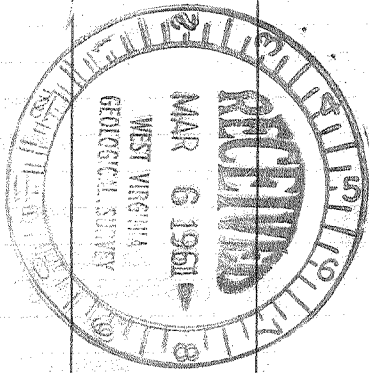
WELL FRACTURED December 2, 1960, 28000 # Sand, thru perforations 4366-4382; Dec 27, 1960
2000 # Sand 4333-4334; Jan 7, 1961 4365-4367 2000# sand, Feb 3 1961 4365-4367- 3300# sand.
RESULT AFTER TREATMENT 15 MCF, 1 Bbl Oil

ROCK PRESSURE AFTER TREATMENT
Fresh Water 10' Feet _____ Salt Water 400', 1035' Feet 1510'

Formation	Color	Hard or Soft	Top	Bottom	Oil, Gas or Water	Depth	Remarks
Surface			0	10'			
Slate			10	24			
Red Rock			24	42			
Slate			42	60			
Red Rock			60	108			
Slate			108	170			
Red Rock			170	188			
Slate			188	252			
Red Rock			252	275			
Slate			275	294			
Red Rock			294	338			
Slate			338	382			
Sand			382	445	Water	400'	1 Bailer/Hr
Slate			459	530			
Red Rock			530	549			
Slate			549	614			
Red Rock			614	672			
Lime			672	695			
Red Rock			695	752			
Slate			752	771			
Red Rock			771	777			
Slate	Grey		777	997			
Sand			997	1045	Water	1035-1045	1/2 BPH
Slate & Shells			1045	1133			
Sand			1133	1178			
Slate			1178	1400			
Sand			1400	1456			
Slate			1456	1485			



Formation	Color	Hard or Soft	Top 19	Bottom	Oil, Gas or Water	Depth Found	Remarks
Sand (?)			1485	1631	Water	1510	Hole Full
Slate&Shells			1631	1947			
Shale	Black	Coffee Sh	1947	1970			
Berea Sand			1970	1972	Oil	1970	Show
Slate&Shells			1972	3144			
Brown Shale			3144	3270			
Slate			3270	3448			
Brown Shale			3448	3682	Gas	3472	Puff
Slate	White		3682	3803			
Brown Shale			3803	3817			
Slate	White		3817	3997			
Brown Shale			3997	4249			
✓ Lime - <i>Chondaga</i>			4249	4347			
✓ Oriskany Sand			4347	4403	Oil	4350	Show
✓ Lime - <i>Helderberg</i>			4403	4452			
			SLM	4462			
				485			
				Perforated	4366-4370.5	12-3-5/8"	frac charges
					4374-4376	4"	"
					4379-4382	4"	"
				Perforated	4333-4334	6-3-5/8"	frac charges
				Additional tests will be made before well is abandoned			
	4249	4347	4403				
	726	726	726				
	3523	3621	3677				



Date February 8, 1961

APPROVED Union Carbide Olefins Co., Owner

By Kenneth R. Gosnell
 Kenneth R. Gosnell (Title)
 District Production Engineer
 Natural Resources - Ohio-W.Va.