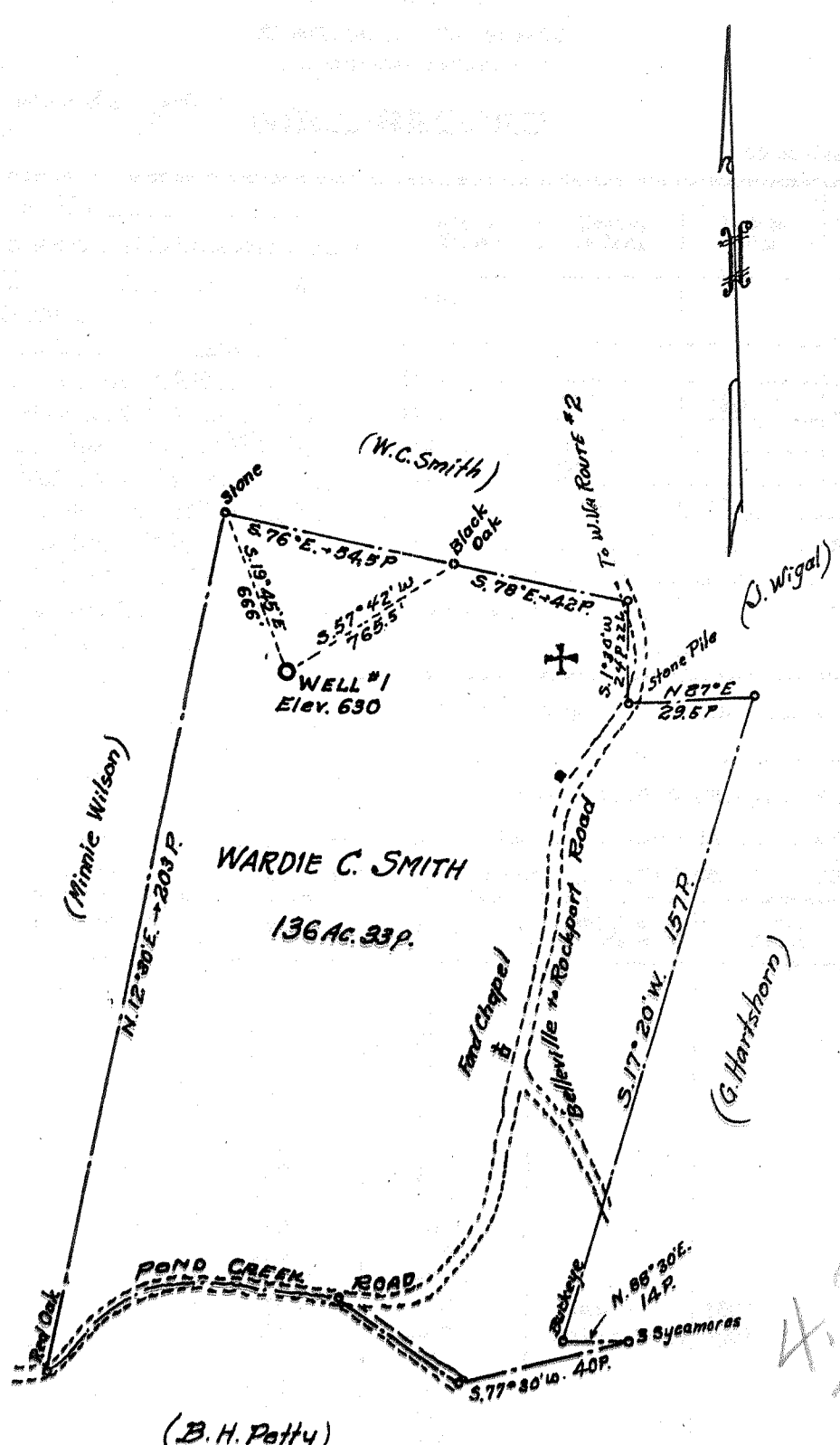


Latitude 39° 10'

Longitude 81° 40'



4.355  
2.84

New Location   
 Drill Deeper   
 Abandonment

Company Hilton Bever  
 Address Williamstown, W. Va.  
 Farm Wardie C. Smith  
 Tract \_\_\_\_\_ Acres 136<sup>33</sup> Lease No. \_\_\_\_\_  
 Well (Farm) No. 1 Serial No. \_\_\_\_\_  
 Elevation (Spirit Level) 630  
 Quadrangle Belleville (WC)  
 County Wood District Harris  
 Engineer Parker E. Peters  
 Engineer's Registration No. 485  
 File No. \_\_\_\_\_ Drawing No. \_\_\_\_\_  
 Date July 15 1958 Scale 1" = 40R

STATE OF WEST VIRGINIA  
 DEPARTMENT OF MINES  
 OIL AND GAS DIVISION  
 CHARLESTON

**WELL LOCATION MAP**  
 FILE NO. W00-478

+ Denotes location of well on United States Topographic Maps, scale 1 to 62,500, latitude and longitude lines being represented by border lines as shown.  
 - Denotes one inch spaces on border line of original tracing.



STATE OF WEST VIRGINIA  
DEPARTMENT OF MINES  
OIL AND GAS DIVISION

*Belleville quadrangle*

WELL RECORD

Permit No. W00-478

Oil or Gas Well Oil

(KIND)

Company HIB OIL & GAS CO.  
Address 119 E. 5th. Street Williamstown, W.Va  
Farm WARDIE C. SMITH Acres 202  
Location (waters) Pond Creek  
Well No. (ONE) #1 Elev. 630'  
District Harris County Wood  
The surface of tract is owned in fee by Wardie C. SMITH  
Address Belleville, W.Va  
Mineral rights are owned by Wardie C. Smith  
Address Belleville, W.Va  
Drilling commenced JULY 25th. 1958  
Drilling completed DECEMBER 1st. 1958  
Date Shot 12/2/1958 From 1942' To 1947'  
With 110 Qts. Nitro-Glycerine  
Open Flow /10ths Water in Inch  
/10ths Merc. in Inch  
Volume  Cu. Ft.  
Rock Pressure 360 lbs. 24 hrs.  
Oil 10 bbls., 1st 24 hrs.  
Fresh water None feet  feet  
Salt water None feet  feet

Casing and Tubing	Used in Drilling	Left in Well	Packers
Size			
16			Kind of Packer
18			
10	380'	380'	Size of
8 1/4	390'		
6 1/2	930'		Depth set
5 3/16	1599'	1599'	
3			Perf. top
2	1947'	1947'	Perf. bottom
Liners Used			Perf. top
			Perf. bottom

CASING CEMENTED No SIZE No. Ft. Date

COAL WAS ENCOUNTERED AT none FEET INCHES  
FEET INCHES FEET INCHES  
FEET INCHES FEET INCHES

Formation	Color	Hard or Soft	Top	Bottom	Oil, Gas or Water	Depth Found	Remarks
Surface			0	15			
Red Rock	Red		15	20			
Slate			20	50			
Red Rock	Red		50	60			
Slate			60	70			
Sand			70	135			
Slate			135	180			
Red Rock	Red		180	200			
Slate			200	220			
Red Rock	Red		220	300			
Slate			300	315			
Red Rock	Red		315	335			
Sand			335	385	Water	380'	
Slate			385	460	Quick Sand	390'	
Sand			460	480			
Black Slate			480	520			
Red Rock	Red		520	615			
Slate			615	650			
Pink Rock			650	675			
Grey Slate			675	700			
Pink Rock			700	725			
Grey Slate			725	870			
Sand			870	900	Water	875'	
Shale			900	930			
Sand			930	950	Water	940'	
Shale			950	1030			
Sand			1030	1060			
Shale			1060	1250			
Sand			1250	1260			
Shale			1260	1300	Water	1275	
Sand			1300	1350			
Shale			1350	1360			
Sand			1360	1390			
Shale		Hard	1390	1395			
Lime		Hard	1395	1460			
Sand			1460	1525			
Shale			1525	1920			
Black Shale			1920	1942			
Berea Sand			1942	1947			
			Total Depth	1967			

(Over)

