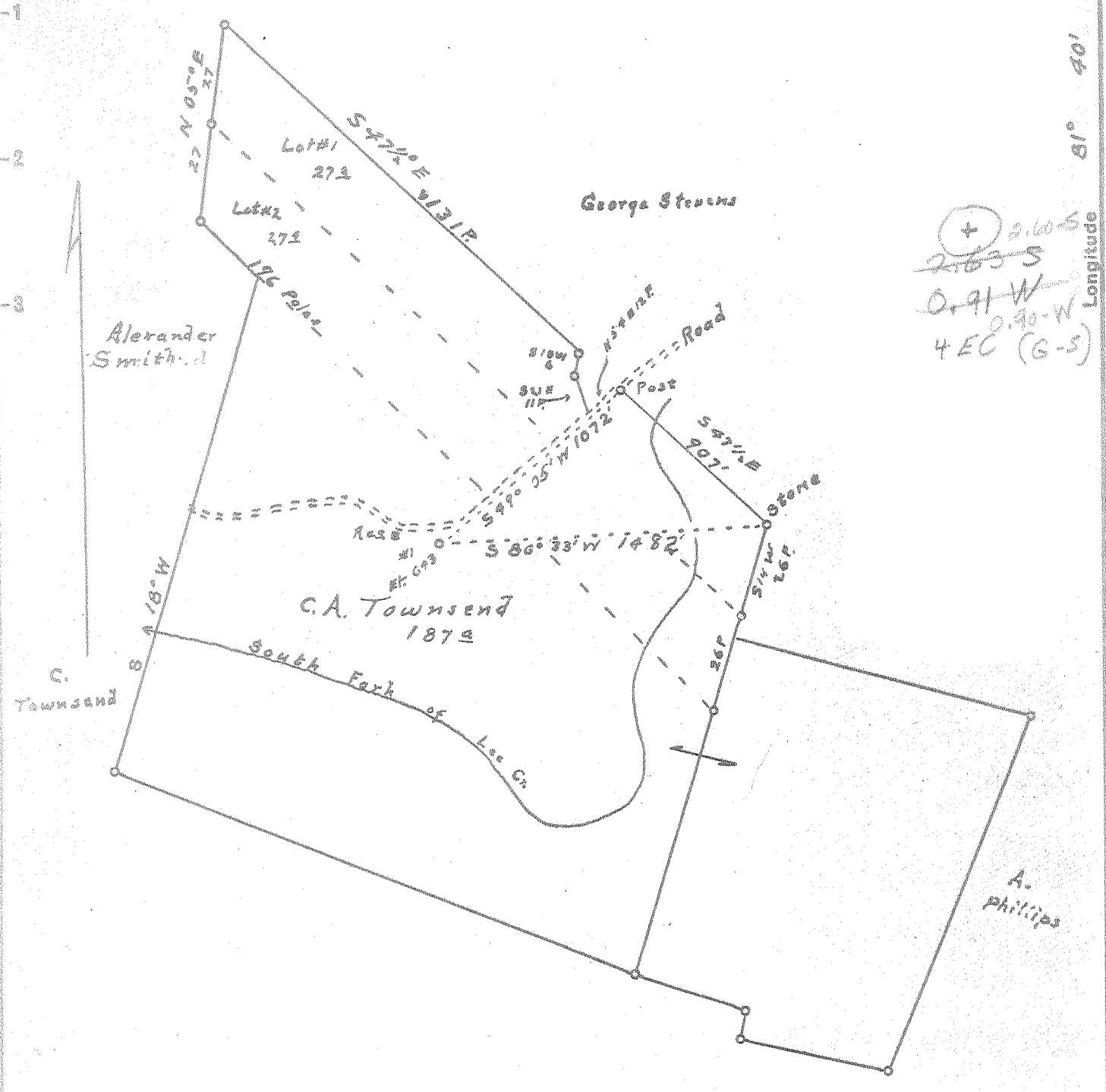


4

P

Latitude 39° 10'

Longitude 81° 40'



+ 2.10 S  
~~2.63 S~~  
 0.91 W  
 0.90 W  
 4 EC (G-S)

New Location...   
 Drill Deeper.....   
 Abandonment.....

Company B. H. Putnam (operator)  
 Address Box 647 Marietta, Ohio  
 Farm C. A. Townsend  
 Tract \_\_\_\_\_ Acres 187 Lease No. \_\_\_\_\_  
 Well (Farm) No. 1 Serial No. \_\_\_\_\_  
 Elevation (Spirit Level) 643'  
 Quadrangle Belleville **WC**  
 County Wood District Harris  
 Engineer Robert R. Anderson  
By a n. credit  
 Engineer's Registration No. 296  
 File No. \_\_\_\_\_ Drawing No. \_\_\_\_\_  
 Date 3/10, 55 Scale 1 in = 40 poles

STATE OF WEST VIRGINIA  
 DEPARTMENT OF MINES  
 OIL AND GAS DIVISION  
 CHARLESTON

**WELL LOCATION MAP**  
 FILE NO. W00-443

+ Denotes location of well on United States Topographic Maps, scale 1 to 62,500, latitude and longitude lines being represented by border lines as shown.  
 - Denotes one inch spaces on border line of original tracing.

1-0

Deepwell



STATE OF WEST VIRGINIA  
DEPARTMENT OF MINES  
OIL AND GAS DIVISION 15

Quadrangle BELLEVILLE

WELL RECORD

Permit No. W00-443

Oil or Gas Well DRY

(KIND)

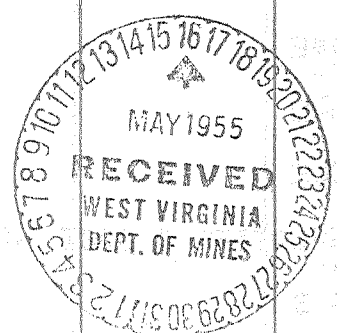
Company B. H. Putnam  
Address Box 647 - Marietta, Ohio  
Farm C. A. Townsend Acres 187  
Location (waters) South Fork of Lee Creek  
Well No. 1 Elev. 643  
District Harris County Wood  
The surface of tract is owned in fee by C. A. Townsend et ux  
Belleville, W. Va. Address \_\_\_\_\_  
Mineral rights are owned by Same  
Address \_\_\_\_\_  
Drilling commenced March 9, 1955  
Drilling completed May 13, 1955  
Date Shot not shot From \_\_\_\_\_ To \_\_\_\_\_  
With \_\_\_\_\_

| Casing and Tubing | Used in Drilling | Left in Well | Packers        |
|-------------------|------------------|--------------|----------------|
| Size              |                  |              |                |
| 16                | 24' 11"          |              | Kind of Packer |
| 13                | 469'             |              |                |
| 10                | 953'             |              | Size of        |
| 8 1/4             | 1692'            |              |                |
| 6 1/2             |                  |              | Depth set      |
| 5 3/16            |                  |              |                |
| 3                 |                  |              | Perf. top      |
| 2                 |                  |              | Perf. bottom   |
| Liners Used       |                  |              | Perf. top      |
|                   |                  |              | Perf. bottom   |

Open Flow /10ths Water in \_\_\_\_\_ Inch  
/10ths Merc. in \_\_\_\_\_ Inch  
Volume \_\_\_\_\_ Cu. Ft.  
Rock Pressure \_\_\_\_\_ lbs. \_\_\_\_\_ hrs.  
Oil \_\_\_\_\_ bbls., 1st 24 hrs.  
Fresh water \_\_\_\_\_ feet \_\_\_\_\_ feet  
Salt water 1155' feet 1340' feet

CASING CEMENTED \_\_\_\_\_ SIZE \_\_\_\_\_ No. Ft. \_\_\_\_\_ Date \_\_\_\_\_  
COAL WAS ENCOUNTERED AT \_\_\_\_\_ FEET \_\_\_\_\_ INCHES  
\_\_\_\_\_ FEET \_\_\_\_\_ INCHES \_\_\_\_\_ FEET \_\_\_\_\_ INCHES  
\_\_\_\_\_ FEET \_\_\_\_\_ INCHES \_\_\_\_\_ FEET \_\_\_\_\_ INCHES

| Formation         | Color | Hard or Soft | Top            | Bottom         | Oil, Gas or Water | Depth Found | Remarks |
|-------------------|-------|--------------|----------------|----------------|-------------------|-------------|---------|
| Surface           |       |              | 0              | 15             |                   |             |         |
| Sand              |       |              | 15             | 20             |                   |             |         |
| Red Rock          |       |              | 20             | 89             |                   |             |         |
| Slate & Shells    |       |              | 89             | 100            |                   |             |         |
| Red Rock          |       |              | 100            | 135            |                   |             |         |
| Slate             |       |              | 135            | 170            |                   |             |         |
| Red Rock          |       |              | 170            | 190            |                   |             |         |
| Sand              |       |              | 190            | 245            |                   |             |         |
| Slat <del>a</del> |       |              | 245            | 250            |                   |             |         |
| Red Rock          |       |              | 250            | 280            |                   |             |         |
| Slate & Shells    |       |              | 280            | 300            |                   |             |         |
| Red Rock          |       |              | 300            | 325            |                   |             |         |
| Lime              |       |              | 325            | 350            |                   |             |         |
| Red Rock          |       |              | 350            | 360            |                   |             |         |
| Sand Broken       |       |              | 360            | 370            |                   |             |         |
| Slate             |       |              | 370            | 375            |                   |             |         |
| Sand              |       |              | 375            | 458            |                   |             |         |
| Slate & Shells    |       |              | 458            | 525            |                   |             |         |
| Black Slate       |       |              | 525            | 540            |                   |             |         |
| Blue Slate        |       |              | 540            | 550            |                   |             |         |
| Red Rock          |       |              | 550            | 715            |                   |             |         |
| Sand              |       |              | 715            | 730            |                   |             |         |
| Slate             |       |              | <del>715</del> | <del>730</del> | 730 To 735        |             |         |
| Red Rock          |       |              | 735            | 760            |                   |             |         |
| Slate & Shells    |       |              | 760            | 785            |                   |             |         |
| Slate             |       |              | 785            | 806            |                   |             |         |
| Sand              |       |              | 806            | 810            |                   |             |         |
| Slate             |       |              | 810            | 835            |                   |             |         |
| Red Rock          |       |              | 835            | 845            |                   |             |         |
| Slate & Shells    |       |              | 845            | 860            |                   |             |         |
| Sand Broken       |       |              | 860            | 880            |                   |             |         |
| Slate & Shells    |       |              | 880            | 969            |                   |             |         |
| Sand              |       |              | 969            | 980            |                   |             |         |
| Slate             |       |              | 980            | 1025           |                   |             |         |
| Sand Broken       |       |              | 1025           | 1046           |                   |             |         |
| Slate             |       |              | 1046           | 1102           |                   |             |         |
| Sand Broken       |       |              | 1102           | 1128           |                   |             |         |
| Slate & Shells    |       |              | 1128           | 1145           |                   |             |         |



(Over)

| Formation         | Color | Hard or Soft | Top /s' | Bottom | Oil, Gas or Water | Depth Found | Remarks      |
|-------------------|-------|--------------|---------|--------|-------------------|-------------|--------------|
| Sand              |       |              | 1145    | 1225   | Water             | 1155        | 2 Bails      |
| Slate % Shells    |       |              | 1225    | 1240   |                   |             |              |
| Sand              |       |              | 1240    | 1325   |                   |             | 2 Salt       |
| Black Slate       |       |              | 1325    | 1335   |                   |             |              |
| Sand - 34 Salt    |       |              | 1335    | 1370   | Water             | 1340        | 3 Bails Salt |
| Slate             |       |              | 1370    | 1374   |                   |             |              |
| Sand - Enjin      |       |              | 1374    | 1430   |                   |             | Enjin        |
| Slate & Shells    |       |              | 1430    | 1475   |                   |             |              |
| Sand - Squaw      |       |              | 1475    | 1491   |                   |             | Squaw        |
| Slate             |       |              | 1491    | 1956   |                   |             |              |
| Sand - Berea      |       |              | 1956    | 1961   |                   |             | Berea        |
| Slate & Shells    |       |              | 1961    | 2800   |                   |             |              |
| Slate             |       |              | 2800    | 3385   | Show Gas          | 2920        |              |
| Brown Shale       |       |              | 3385    | 4005   | " "               | 2935        |              |
| Black Slate       |       |              | 4005    | 4199   |                   |             |              |
| Cor. Lime         |       | Hard         | 4199    | 4294   |                   |             |              |
| Sand - Oriskany   |       | "            | 4294    | 4335   |                   |             | Oriskany     |
| Lime - Heidelberg |       |              | 4335    | 4344   |                   |             |              |
|                   |       |              |         | 485    |                   |             |              |
|                   |       |              |         |        | 4199              | 4294        | 4335         |
|                   |       |              |         |        | 643               | 643         | 643          |
|                   |       |              |         |        | 3556              | 3651        | 3692         |

Date \_\_\_\_\_, 19\_\_\_\_

APPROVED \_\_\_\_\_, Owner