

2

3

Latitude 39° 10'



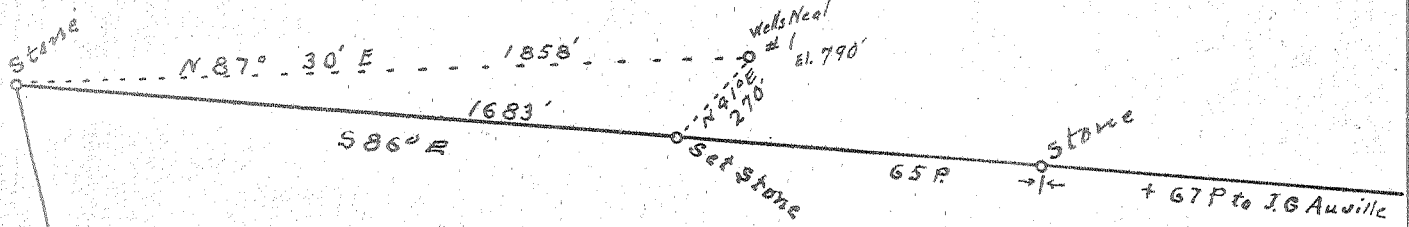
Bd. on rd. by Woodyard and Hoffman

0.35 S  
3.52 W  
3.48 W  
4 NW (G-5)

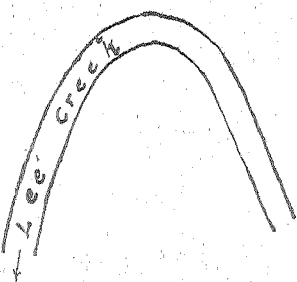
Longitude 81° 40'

Geo. B. Neal 180s tract

ONE by Auvilla



Calab Wells Estate  
(140 & lease)



- New Location
- Drill Deeper
- Abandonment

Company B. H. Putnam (operator)  
 Address Box 657 Marietta, Ohio  
 Farm Geo B Neal jointly with Wells Estate  
 Tract 180s Acres 180 Lease No. 140  
 Well (Farm) No. 1 (Wells Neal) Serial No. \_\_\_\_\_  
 Elevation (Spirit Level) 790' - WC  
 Quadrangle Belleville WC  
 County Wood District Harris  
 Engineer Robert R. Anderson  
by O. Meredith  
 Engineer's Registration No. 296  
 File No. \_\_\_\_\_ Drawing No. \_\_\_\_\_  
 Date 1/1 54 Scale 1 in = 30 Poles

STATE OF WEST VIRGINIA  
 DEPARTMENT OF MINES  
 OIL AND GAS DIVISION  
 CHARLESTON

**WELL LOCATION MAP**  
 FILE NO. W100-430

- + Denotes location of well on United States Topographic Maps, scale 1 to 62,500, latitude and longitude lines being represented by border lines as shown.
- Denotes one inch spaces on border line of original tracing.

Deep Well



STATE OF WEST VIRGINIA  
DEPARTMENT OF MINES  
OIL AND GAS DIVISION 9

Quadrangle Belleville

WELL RECORD

Permit No. WOO-430

Oil or Gas Well Gas  
(KIND)

Company B. H. Putnam, Operator  
Address 512 Third Street, Marietta, Ohio  
Farm Wells-Neal Acres 180  
Location (waters) \_\_\_\_\_  
Well No. 1 Elev. 790  
District Harris County Wood  
The surface of tract is owned in fee by \_\_\_\_\_  
Address \_\_\_\_\_  
Mineral rights are owned by \_\_\_\_\_  
Address \_\_\_\_\_  
Drilling commenced 10-5-54  
Drilling completed 12-6-54  
Date Shot \_\_\_\_\_ From \_\_\_\_\_ To \_\_\_\_\_  
With \_\_\_\_\_

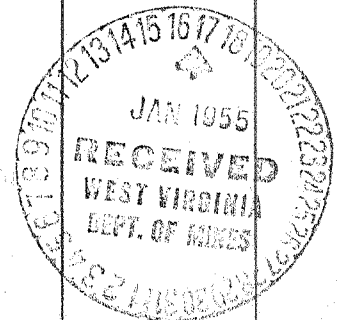
Casing and Tubing	Used in Drilling	Left in Well	Packers
Size			Kind of Packer
16			
13 <u>3/8</u>	<u>585</u>		
10 <u>3/4</u>	<u>1105</u>		Size of
8 <u>5/8</u>	<u>1660</u>	<u>1660</u>	
6 <u>5/8</u>			Depth set
5 <u>3/8</u>	<u>4165</u>	<u>4165</u>	
3			Perf. top
2 <u>3/8</u>			Perf. bottom
Liners Used			Perf. top
			Perf. bottom

Open Flow /10ths Water in \_\_\_\_\_ Inch  
/10ths Merc. in \_\_\_\_\_ Inch  
Volume 150,000 Cu. Ft.  
Rock Pressure \_\_\_\_\_ lbs. \_\_\_\_\_ hrs.  
Oil None bbls., 1st 24 hrs.  
Fresh water None feet \_\_\_\_\_ feet  
Salt water None feet \_\_\_\_\_ feet

CASING CEMENTED Yes SIZE 5 1/2 No. Ft. 4165 Date \_\_\_\_\_

COAL WAS ENCOUNTERED AT \_\_\_\_\_ FEET \_\_\_\_\_ INCHES  
\_\_\_\_\_ FEET \_\_\_\_\_ INCHES \_\_\_\_\_ FEET \_\_\_\_\_ INCHES  
\_\_\_\_\_ FEET \_\_\_\_\_ INCHES \_\_\_\_\_ FEET \_\_\_\_\_ INCHES

Formation	Color	Hard or Soft	Top	Bottom	Oil, Gas or Water	Depth Found	Remarks
Soil			0	5			
Slate			5	10			
Rock	Red		10	40			
Slate			40	70			
Rock	Red		70	100			
Slate	Blue		100	125			
Rock	Red		125	145			
Slate			145	170			
Sand			170	225			
Slate	White		225	245			
Rock	Red		245	250			
Slate			250	275			
Rock	Red		275	298			
Lime			298	318			
Slate			318	325			
Rock	Red		325	360			
Slate	White		360	370			
Rock	Red		370	375			
Lime			375	401			
Rock	Red		401	406			
Slate			406	450			
Rock	Red		450	465			
Slate			465	520			
Sand			520	580			
Slate	Black		580	600			
Rock	Red		600	605			
Slate			605	610			
Rock	Red		610	720			
Slate			720	735			
Rock	Red		735	810			
Slate			810	865			
Sandy Slate			865	900			
Slate	Gray		900	925			
Lime		Hard	925	935			
Slate	Blue		935	1020			
Rock	Pink		1020	1030			
Slate	Black		1030	1070			
Sand			1070	1082			
Slate			1082	1105			



(Over)

Formation	Color	Hard or Soft	Top	Bottom	Oil, Gas or Water	Depth Found	Remarks
Slate	Black		1105	1130			
Sandy Slate			1130	1150			
Slate			1150	1212			
Sand			1212	1290			
Slate	Black		1290	1325			
Sand			1325	1370			
Slate			1370	1400			
Broken Sand			1400	1455			
Slate			1455	1460			
Sand			1460	1470			
Slate			1470	1485			
Sand Injun			1485	1645			
Broken Sand			1645	1660			
Slate & Shells			1660	2005			
Shale	Brown	<i>- Coffee Gr.</i>	2005	2020			
Berea Sand			2020	2023			
Slate & Shells			2023	3145			
Shale	Brown		3145	3291			
Slate			3291	3450			
Shale	Brown		3450	3650			
Slate			3650	3990			
Shale	Brown		3990	4140			
Lime Knifer	<i>- Onondaga</i>		4140	4165			

4140  
 790  
 3350

461

Date January 15, 1955

APPROVED: B. W. Pithman, Director, Owner

By: B. W. Pithman, Jr. Supv.