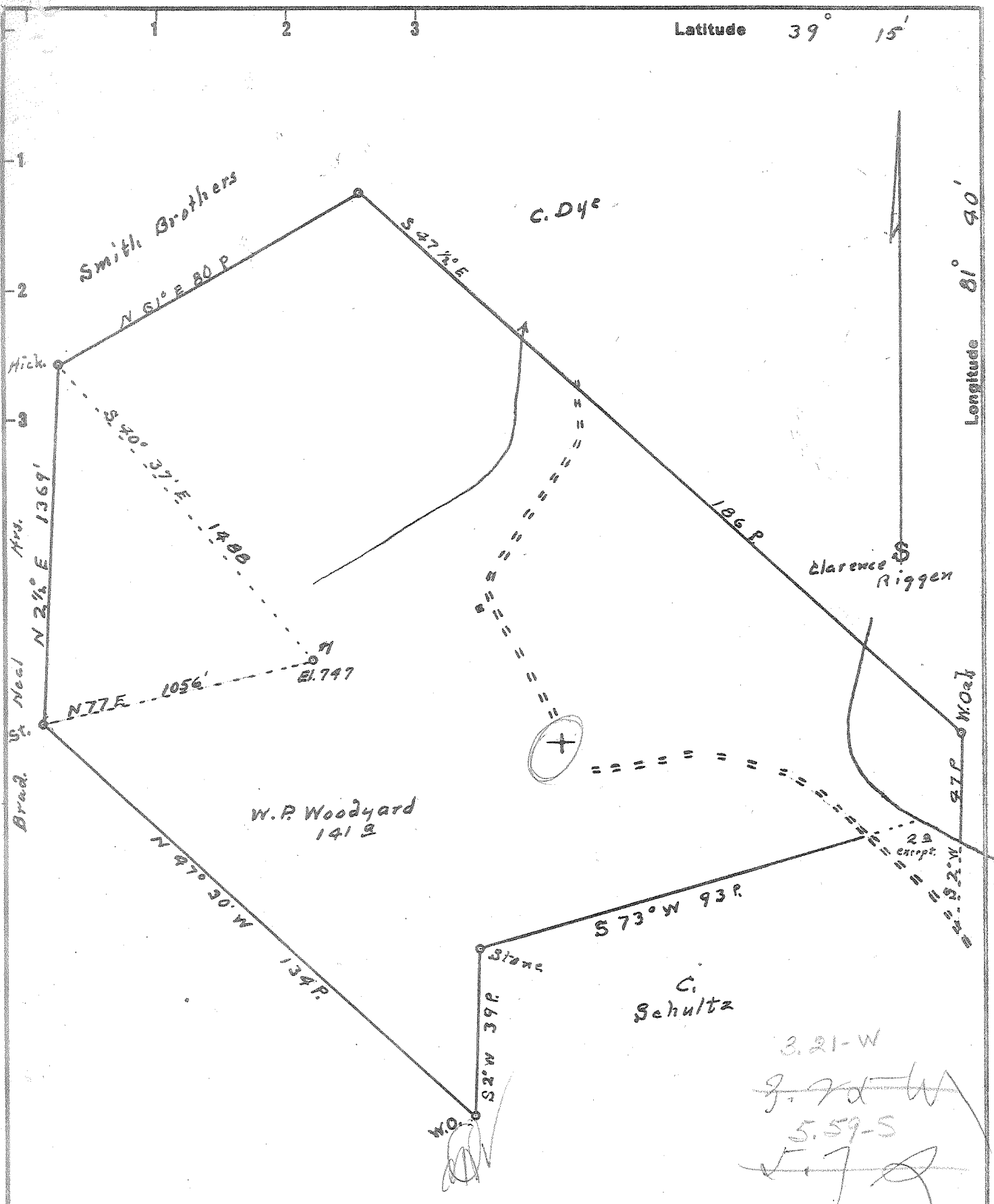


Latitude 39° 15'

Longitude 81° 40'



New Location...   
 Drill Deeper.....   
 Abandonment.....

TO BE REDRILLED BY PAUL F. STARR, AGENT  
 E. G. (JANK) PENCE  
 10-24-63

Company B.H. Putnam, Operator NOV 4 1963  
 Address 1st Nat Bank Marietta, Ohio  
 Farm W.P. Woodyard  
 Tract \_\_\_\_\_ Acres 141 Lease No. \_\_\_\_\_  
 Well (Farm) No. \_\_\_\_\_ Serial No. \_\_\_\_\_  
 Elevation (Spirit Level) 797'  
 Quadrangle Belleville  
 County Wood District Hart's  
 Engineer Robert R. Anderson  
 by O. Meredith  
 Engineer's Registration No. 296  
 File No. \_\_\_\_\_ Drawing No. \_\_\_\_\_  
 Date 3/8 54 Scale 1 in = 30 Poles

STATE OF WEST VIRGINIA  
 DEPARTMENT OF MINES  
 OIL AND GAS DIVISION  
 CHARLESTON

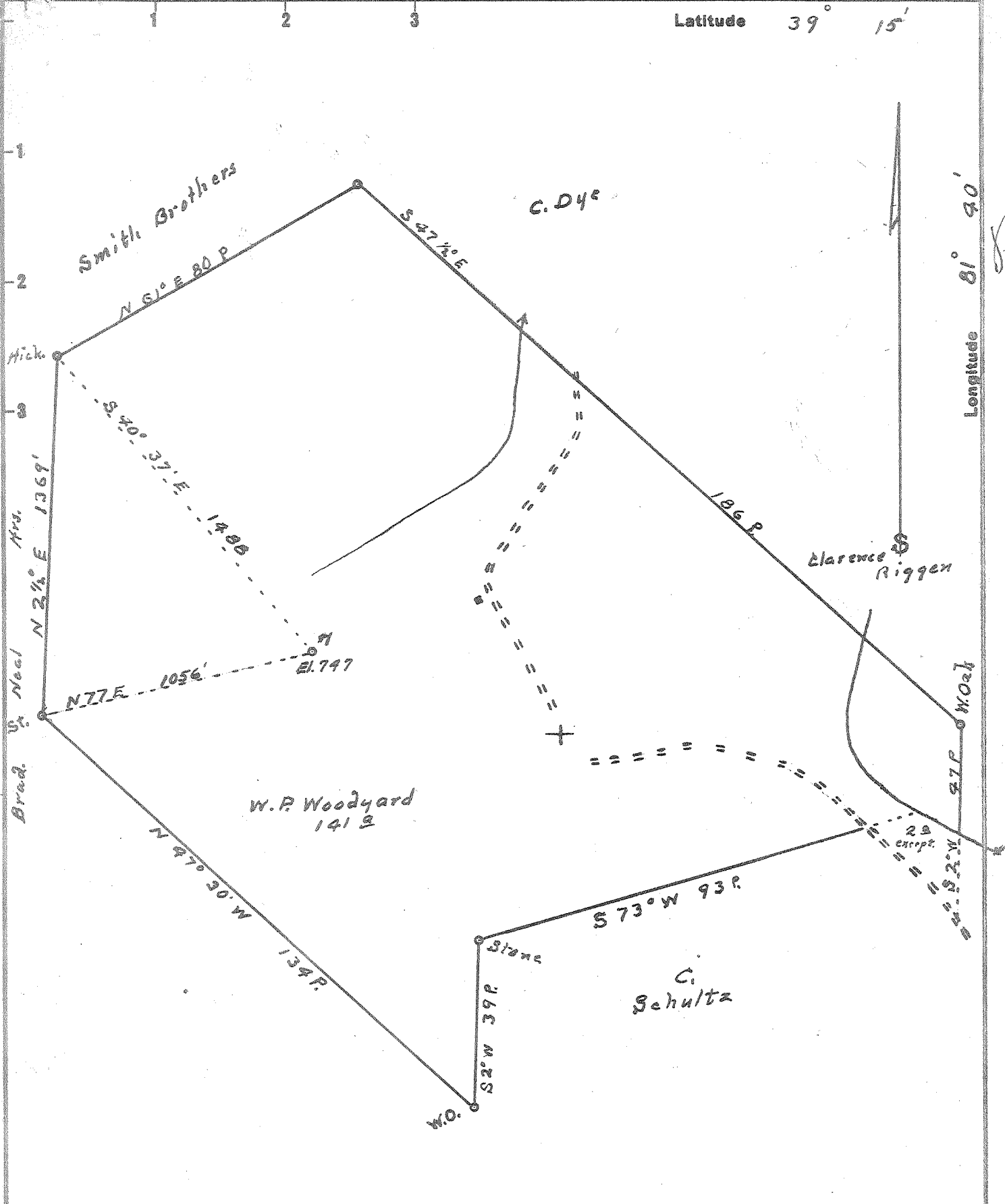
WELL LOCATION MAP  
 FILE NO. WOO-420-Redrill

+ Denotes location of well on United States Topographic Maps, scale 1 to 62,500, latitude and longitude lines being represented by border lines as shown.

- Denotes one inch spaces on border line of original tracing.

W.P. WOODYARD No. 1 — E.G. (JANK) PENCE — DEEP WELL WOO-420-Redrill

Latitude 39° 15'



New Location...   
 Drill Deeper.....   
 Abandonment.....

E. G. (JAN) PENCE  
 TO BE REDRILLED BY PAUL F. STARR, AGENT  
 10-24-63

Company B.H. Putnam, Operator  
 Address 1st Nat Bank Marietta, Ohio  
 Farm W.P. Woodyard  
 Tract \_\_\_\_\_ Acres 1.91 Lease No. \_\_\_\_\_  
 Well (Farm) No. 1 Serial No. \_\_\_\_\_  
 Elevation (Spirit Level) 797'  
 Quadrangle Belleville NW  
 County Wood District Harris  
 Engineer Robert R. Anderson  
 by O. Meredith  
 Engineer's Registration No. 296  
 File No. \_\_\_\_\_ Drawing No. \_\_\_\_\_  
 Date 3/8 54 Scale 1 in = 30 Feet

STATE OF WEST VIRGINIA  
 DEPARTMENT OF MINES  
 OIL AND GAS DIVISION  
 CHARLESTON

WELL LOCATION MAP  
 FILE NO. Woo-420-Redrill

+ Denotes location of well on United States Topographic Maps, scale 1 to 62,500, latitude and longitude lines being represented by border lines as shown.

- Denotes one inch spaces on border line of original tracing.



STATE OF WEST VIRGINIA  
DEPARTMENT OF MINES  
OIL AND GAS DIVISION 5

*Bella ville*

WELL RECORD

Permit No. WOO-420

Oil or Gas Well Gas

(KIND)

Company B. H. Putnam, Operator  
Address 512 Third Street, Marietta, Ohio  
Farm W. P. Woodyard Acres 141  
Location (waters) Ohio River  
Well No. 1 Elev. 747  
District Harris County Wood  
The surface of tract is owned in fee by W. P. Woodyard  
Address \_\_\_\_\_  
Mineral rights are owned by same  
Address \_\_\_\_\_  
Drilling commenced 3-16-54  
Drilling completed 5-18-54  
Date Shot NO From \_\_\_\_\_ To \_\_\_\_\_  
With \_\_\_\_\_

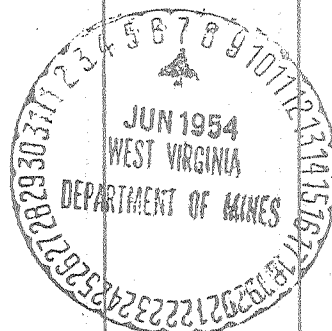
Casing and Tubing	Used in Drilling	Left in Well	Packers
Size			
16		21	Kind of Packer
13	603		
10		1088	Size of
8 1/4		1627	
6 5/8			Depth set
5 3/16		4203	
3			Perf. top
2			Perf. bottom
Liners Used			Perf. top
			Perf. bottom

Open Flow \_\_\_\_\_ /10ths Water in \_\_\_\_\_ Inch  
\_\_\_\_\_ /10ths Merc. in \_\_\_\_\_ Inch  
Volume 3,000 MCF after 4 hours \_\_\_\_\_ Cu. Ft.  
Rock Pressure \_\_\_\_\_ lbs. \_\_\_\_\_ hrs.  
Oil none \_\_\_\_\_ bbls., 1st 24 hrs.  
Fresh water none \_\_\_\_\_ feet \_\_\_\_\_ feet  
Salt water none \_\_\_\_\_ feet \_\_\_\_\_ feet

CASING CEMENTED 5-1/2 SIZE 4161 No. Ft. 5-3-54 Date

COAL WAS ENCOUNTERED AT \_\_\_\_\_ FEET \_\_\_\_\_ INCHES  
\_\_\_\_\_ FEET \_\_\_\_\_ INCHES \_\_\_\_\_ FEET \_\_\_\_\_ INCHES  
\_\_\_\_\_ FEET \_\_\_\_\_ INCHES \_\_\_\_\_ FEET \_\_\_\_\_ INCHES

Formation	Color	Hard or Soft	Top	Bottom	Oil, Gas or Water	Depth Found	Remarks
rock	red		0	90			
slate and shells			90	114			
slate			114	140			
sand			140	236			
slate			236	278			
rock	red		278	300			
slate			300	317			
lime			317	320			
rock	red		320	345			
slate & shells			345	383			
rock	red		383	430			
slate & shells			430	470			
sand			470	505			
slate & shells			505	545			
rock	red		545	750			
slate			750	768			
slate & shells			768	800			
sand			800	838			
slate			838	873			
sandy slate			873	906			
sand			906	950			
slate & shells			950	983			
slate & shells			983	1055			
lime & sand			1055	1077			
sand			1077	1084			
slate & shells			1084	1094			
sand			1094	1119			
slate & sand			1119	1181			
slate & shells			1181	1202			
Sand			1202	1234			
sand; slate, shells			1234	1 290			
slate & shells			1290	1352			
sand			1352	1370			
slate and shells			1370	1411			
Slate			1411	1430			



(Over)

Formation	Color	Hard or Soft	Top	Bottom	Oil, Gas or Water	Depth Found	Remarks
slate & shells			1430	1476			
sand			1476	1611			
slate			1611	1629			
slate & shells			1629	1669			
slate			1669	1696			
slate & shells			1696	1975			
sand			1975	1979			
slate & shells			1979	2259			
slate			2259	2309			
slate & shells			2309	2697			
slate			2697	2777			
slate & shells			2777	3267			
slate			3267	3318			
slate & shells			3318	3453			
shale			3453	3671			
slate & shells			3671	3718			
slate			3718	3820			
slate & shells			3820	3865			
slate			3865	3959			
shale			3959	4133			
lime			4133	4151			
lime	Onondaga		4151	4161			
lime			4161	4229			
sand		ORISKANY		4229	4232 T.D.		

475

Date May 21, 1954, 19

APPROVED E. H. Putnam, Operator, Owner

By B. J. Putnam, Jr.



STATE OF WEST VIRGINIA  
DEPARTMENT OF MINES  
OIL AND GAS DIVISION 5

*Bella ville*

WELL RECORD

Permit No. WOO-420

Oil or Gas Well Gas  
(KIND)

Company B. H. Putnam, Operator  
Address 512 Third Street, Marietta, Ohio  
Farm W. P. Woodyard Acres 141  
Location (waters) Ohio River  
Well No. 1 Elev. 747  
District Harris County Wood  
The surface of tract is owned in fee by W. P. Woodyard  
Address \_\_\_\_\_  
Mineral rights are owned by same  
Address \_\_\_\_\_  
Drilling commenced 3-16-54  
Drilling completed 5-18-54  
Date Shot no From \_\_\_\_\_ To \_\_\_\_\_  
With \_\_\_\_\_

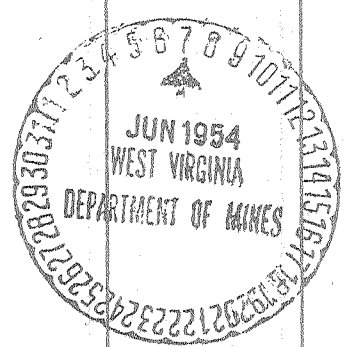
Casing and Tubing	Used in Drilling	Left in Well	Packers
Size			Kind of Packer
16		21	
18	603		
10		1088	Size of
8 1/2		1627	
6 1/2			Depth set
5 3/16		4203	
8			Perf. top
2			Perf. bottom
Liners Used			Perf. top
			Perf. bottom

Open Flow /10ths Water in \_\_\_\_\_ Inch  
/10ths Merc. in \_\_\_\_\_ Inch  
Volume 3,000 MCF after 4 hours \_\_\_\_\_ Cu. Ft.  
Rock Pressure \_\_\_\_\_ lbs. \_\_\_\_\_ hrs.  
Oil none \_\_\_\_\_ bbls., 1st 24 hrs.  
Fresh water none \_\_\_\_\_ feet \_\_\_\_\_ feet  
Salt water none \_\_\_\_\_ feet \_\_\_\_\_ feet

CASING CEMENTED 5-1/2 SIZE 4161 No. Ft. 5-3-54 Date

COAL WAS ENCOUNTERED AT \_\_\_\_\_ FEET \_\_\_\_\_ INCHES  
\_\_\_\_\_ FEET \_\_\_\_\_ INCHES \_\_\_\_\_ FEET \_\_\_\_\_ INCHES  
\_\_\_\_\_ FEET \_\_\_\_\_ INCHES \_\_\_\_\_ FEET \_\_\_\_\_ INCHES

Formation	Color	Hard or Soft	Top	Bottom	Oil, Gas or Water	Depth Found	Remarks
rock	red		0	90			
slate and shells			90	114			
slate			114	140			
sand			140	236			
slate			236	278			
rock	red		278	300			
slate			300	317			
lime			317	320			
rock	red		320	345			
slate & shells			345	383			
rock	red		383	430			
slate & shells			430	470			
sand			470	505			
slate & shells			505	545			
rock	red		545	750			
slate			750	768			
slate & shells			768	800			
sand			800	838			
slate			838	873			
sandy slate			873	906			
sand			906	950			
slate & shells			950	983			
slate & shells			983	1055			
lime & sand			1055	1077			
sand			1077	1084			
slate & shells			1084	1094			
sand			1094	1119			
slate & sand			1119	1181			
slate & shells			1181	1202			
Sand			1202	1234			
sand; slate, shells			1234	1290			
slate & shells			1290	1352			
sand			1352	1370			
slate and shells			1370	1411			
Slate			1411	1430			



JUN 21 1954

(Over)

W. P. WOODYARD No. 1 — B. H. PUTNAM — WOO-420



Old well fractured



STATE OF WEST VIRGINIA  
DEPARTMENT OF MINES  
OIL AND GAS DIVISION

Rotary   
Spudder   
Cable Tools   
Storage  *dry*  
Oil or Gas Well Oil show  
(KIND)

Form OG-10  
Quadrangle \_\_\_\_\_  
Permit No. W00-420-R

WELL RECORD

Company E. G. (HANK) PENCE  
Address Box 432; Spencer, W. Va.  
Farm W. P. Woodyard Acres \_\_\_\_\_  
Location (waters) \_\_\_\_\_  
Well No. Redrill No. 1 Elev. 747  
District Harris County Wood  
The surface of tract is owned in fee by \_\_\_\_\_  
Address \_\_\_\_\_  
Mineral rights are owned by W. P. Woodyard  
Address Hellville  
Drilling commenced January 2, 1964  
Drilling completed March 30, 1964  
Date Shot \_\_\_\_\_ From \_\_\_\_\_ To \_\_\_\_\_  
With \_\_\_\_\_  
Open Flow /10ths Water in \_\_\_\_\_ Inch  
/10ths Merc. in \_\_\_\_\_ Inch  
Volume \_\_\_\_\_ Cu. Ft.  
Rock Pressure 700 lbs. 72 hrs.  
Oil \_\_\_\_\_ bbls., 1st 24 hrs.  
WELL ACIDIZED (DETAILS) \_\_\_\_\_  
WELL FRACTURED (DETAILS) \_\_\_\_\_

Casing and Tubing	Used in Drilling	Left in Well	Packers
Size			Kind of Packer
16	25Ft.	25Ft.	
13			Size of
10	1035Ft.		
8 1/4	1600Ft.		Depth set
6 3/4		2062Ft.	
5 3/16			Perf. top
4 1/2			Perf. bottom
3			Perf. top
2			Perf. bottom
Liners Used			

Attach copy of cementing record.  
CASING CEMENTED 5 SIZE \_\_\_\_\_ No. Ft. 1-29-64 Date  
Amount of cement used (bags) See Attached Sheet  
Name of Service Co. Dowell  
COAL WAS ENCOUNTERED AT \_\_\_\_\_ FEET \_\_\_\_\_ INCHES  
\_\_\_\_\_ FEET \_\_\_\_\_ INCHES FEET \_\_\_\_\_ INCHES  
\_\_\_\_\_ FEET \_\_\_\_\_ INCHES FEET \_\_\_\_\_ INCHES

RESULT AFTER TREATMENT (Initial open Flow or bbls.) \_\_\_\_\_  
ROCK PRESSURE AFTER TREATMENT \_\_\_\_\_ HOURS  
Fresh Water \_\_\_\_\_ Feet Salt Water \_\_\_\_\_ Feet  
Producing Sand Berea Sand Depth 1975 To 1980

Formation	Color	Hard or Soft	Top	Bottom	Oil, Gas or Water	Depth	Remarks
<p>This well was cleaned out to 2062, Fractured with 500Gls. of acid, 30000 <del>lbs.</del> <sup>lbs.</sup> 2040 sand, 1000Bbls. river water. Results: very small show of oil.</p>							

