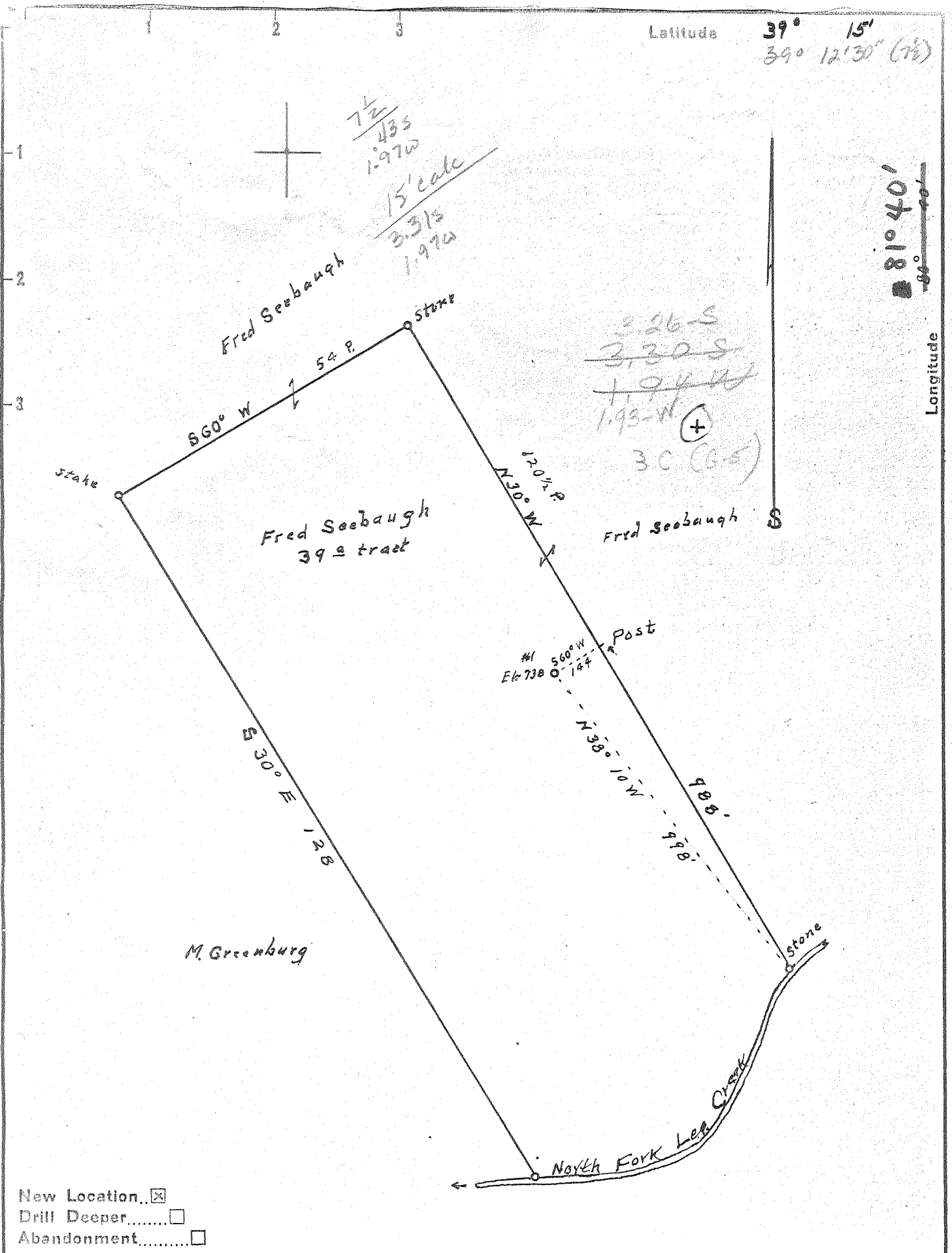


P



Company B. H. Putnam  
 Address P.O. Box 647 Marietta Ohio  
 Farm Fred Seebaugh  
 Tract 39 a Acres 0.92 Lease No. \_\_\_\_\_  
 Well (Farm) No. 1 Serial No. \_\_\_\_\_  
 Elevation (Spirit Level) 738'  
 Quadrangle Belleville NW  
 County Wood District Harris  
 Engineer Robert K. Anderson  
S. O. Meredith  
 Engineer's Registration No. 296  
 File No. \_\_\_\_\_ Drawing No. \_\_\_\_\_  
 Date July 9 53 Scale 1 in = 20 Poles

STATE OF WEST VIRGINIA  
 DEPARTMENT OF MINES  
 OIL AND GAS DIVISION  
 CHARLESTON

WELL LOCATION MAP  
 FILE NO. W00-398

+ Denotes location of well on United States Topographic Maps, scale 1 to 62,500, latitude and longitude lines being represented by border lines as shown.  
 - Denotes one inch spaces on border line of original tracing.

6-6-296

Deepwell

STATE OF WEST VIRGINIA  
DEPARTMENT OF MINES  
OIL AND GAS DIVISION

Quadrangle Pella ville

WELL RECORD

Permit No. W00-398

Oil or Gas Well Gas  
(KIND)

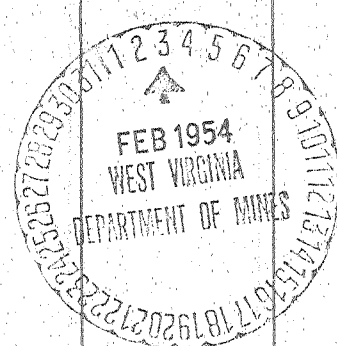
Company B. H. Putnam, Operator  
Address 512 Third St. Marietta, Ohio  
Farm Fred Seebaugh Acres 39  
Location (waters) Ohio River  
Well No. 1 Elev. 738  
District Harris County Wood  
The surface of tract is owned in fee by Fred Seebaugh  
Address \_\_\_\_\_  
Mineral rights are owned by Fred Seebaugh  
Address \_\_\_\_\_  
Drilling commenced \_\_\_\_\_  
Drilling completed \_\_\_\_\_  
Date Shot 11-18-53 From \_\_\_\_\_ To \_\_\_\_\_  
With Hydrafrac treated \_\_\_\_\_  
Open Flow 442 MOF /10ths Water in \_\_\_\_\_ Inch  
442 MOF /10ths Merc. in \_\_\_\_\_ Inch  
Volume \_\_\_\_\_ Cu. Ft.  
Rock Pressure \_\_\_\_\_ lbs. \_\_\_\_\_ hrs.  
Oil none bbls., 1st 24 hrs.  
Fresh water \_\_\_\_\_ feet \_\_\_\_\_ feet  
Salt water \_\_\_\_\_ feet \_\_\_\_\_ feet

Casing and Tubing	Used in Drilling	Left in Well	Packers
Size			Kind of Packer
16			Baker Model "K"
13			Size of
10	923		2 x 5 1/8"
8 3/4	1623	1623	Depth set
6 3/4	4247	4247	4205 ✓
5 3/16			Perf. top
3			Perf. bottom
2	4247	4247	Perf. top
Liners Used			Perf. bottom

CASING CEMENTED 5 1/8" SIZE 4215 No. Ft. \_\_\_\_\_ Date \_\_\_\_\_

COAL WAS ENCOUNTERED AT \_\_\_\_\_ FEET \_\_\_\_\_ INCHES  
\_\_\_\_\_ FEET \_\_\_\_\_ INCHES  
\_\_\_\_\_ FEET \_\_\_\_\_ INCHES

Formation	Color	Hard or Soft	Top	Bottom	Oil, Gas or Water	Depth Found	Remarks
Surface			0	32			
Rock	red		32	82			
Sand			82	191			
Slate & Shells			191	263			
Rock	red		263	295			
Lime			295	322			
Slate & lime			322	358			
Rock	red		358	411			
Slate & Shells			411	464			
Sand Slate			464	498			
Slate & shells			498	529			
Sand & R. Rock			529	570			
Rock	red		570	735			
Slate & Shells			735	866			
Slate			866	923			
Slate & shells			923	965			
Sand			965	1017			
Lime & Sand			1017	1068			
Sand			1068	1108			
Sand & slate			1108	1194			
Slate			1194	1215			
Sand			1215	1236			
Slate & shells			1236	1434			
Sand			1434	1605			
Slate			1605	1623			
Slate & shells			1623	1648			
Slate			1648	1705			
Slate & lime			1705	1751			
Slate			1751	1870			
Slate & shells			1870	1917			
✓ Coffee shale			1917	1939			
✓ Berea sand			1939	1987			
Slate & shells			1987	2233			
Slate			2233	2290			
Slate & shells			2290	2438			
Slate			2438	2502			
Slate & shells			2502	2560			
Slate			2560	2687			



Formation	Color	Hard or Soft	Top <sup>4</sup>	Bottom	Oil, Gas or Water	Depth Found	Remarks
Slate & shells			2687	2750			
Slate			2750	2871			
Slate & shells			2871	2934			
Slate			2934	3069			
Shale			3069	3246			
Slate & shells			3246	3340			
Shale			3340	3384			
Slate & shells			3384	3475			
Slate			3475	3587			
Shale			3587	3693			
Slate & shells			3693	3736			
Slate			3736	3899			
Slate & shells			3899	3956			
Shale			3956	4126			
Lime - Onondaga			4126	4215	4126	4215	
Sand - ORISKANY			4215	4247	738	738	
				475	<del>388</del>	3477	

Date Jan 31, 1954

APPROVED B. H. Putnam, Jr., Owner

By B. H. Putnam, Jr. (Title)