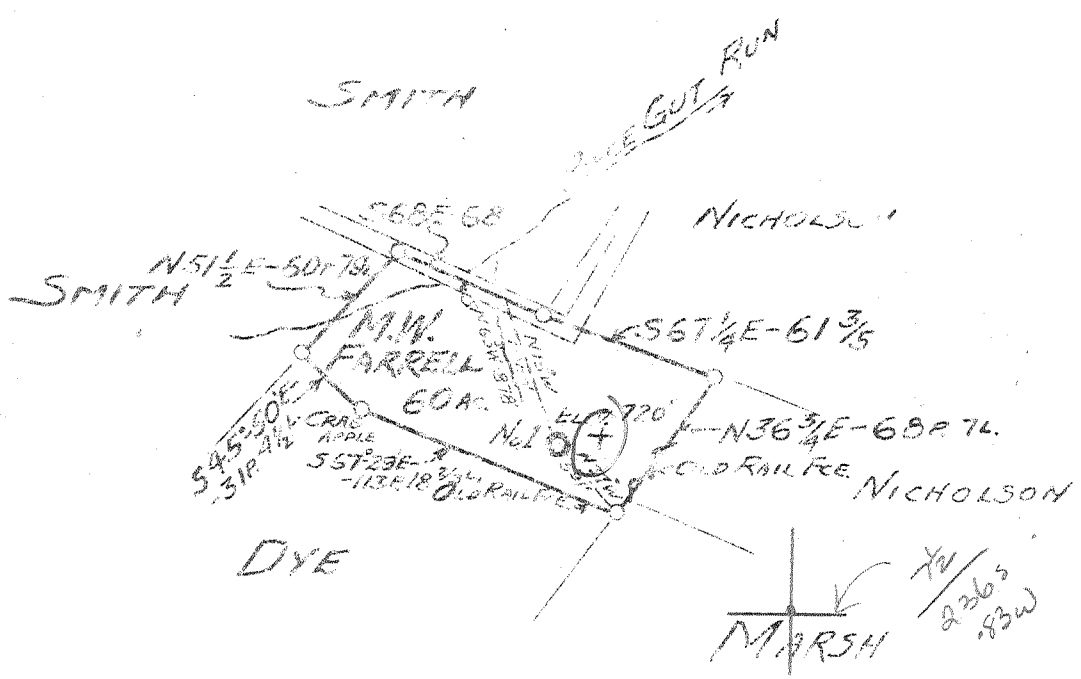


1 2 3

Latitude 39° 10' 39" 12' 30"

81° 27' 30" (7 1/2)
81° 25'

Longitude



15' calc
 $\frac{5.225}{3.060}$

5.22-5
~~5.225~~
~~3.13 W~~
 3.13-W
 3.54 (G-6)

New Location
 Drill Deeper
 Abandonment

Company GLEN W. ROBERTS
 Address ELIZABETH WEST VA
 Farm M.W. FARRELL
 Tract 60 Acres Lease No. _____
 Well (Farm) No. ONE Serial No. _____
 Elevation (Spirit Level) 720'
 Quadrangle ELIZABETH **(NW)**
 County WOOD District STATE
 Engineer Glen W. Roberts
 Engineer's Registration No. 260
 File No. _____ Drawing No. _____
 Date 12-23 Scale 1" = 800' U.S.

STATE OF WEST VIRGINIA
 DEPARTMENT OF MINES
 OIL AND GAS DIVISION
 CHARLESTON

WELL LOCATION MAP
 FILE NO. WCO-352

+ Denotes location of well on United States Topographic Maps, scale 1 to 62,500, latitude and longitude lines being represented by border lines as shown.
 - Denotes one inch spaces on border line of original tracing.

Samples 23-I (5010-5045') T-O

Deep Well



STATE OF WEST VIRGINIA
DEPARTMENT OF MINES
OIL AND GAS DIVISION /5

Elizabeth

WELL RECORD

Permit No. W00-352

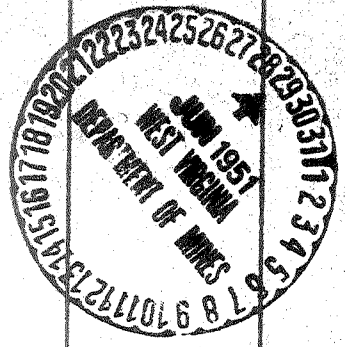
Oil or Gas Well Dry
(KIND)

Company Glen W. Roberts
Address Elizabeth, W. Va.
Farm M. W. Farrell Acres 60
Location (waters) Piece Gut Run
Well No. 1 Elev. 720'
District Slate County Wood
The surface of tract is owned in fee by M. W. Farrell
Address Mineral Wells, W. Va.
Mineral rights are owned by Truman E. Gore et. al.
Address Clarksburg, W. Va.
Drilling commenced April 11, 1951.
Drilling completed June 27, 1951
Date Shot _____ From _____ To _____
With _____
Open Flow _____ /10ths Water in _____ Inch
_____ /10ths Merc. in _____ Inch
Volume _____ Cu. Ft.
Rock Pressure _____ lbs. _____ hrs.
Oil _____ bbls., 1st 24 hrs.
Fresh water _____ feet _____ feet
Salt water _____ feet _____ feet

Casing and Tubing	Used in Drilling	Left in Well	Packers
Size			
16			Kind of Packer
13			
10	338		Size of
	943		
6% 7	1832		Depth set
5 3/16	4885	<i>connected</i>	Perf. top
3		<i>7 taps cement</i>	Perf. bottom
2			Perf. top
Liners Used			Perf. bottom

CASING CEMENTED _____ SIZE _____ No. Ft. _____ Date _____
COAL WAS ENCOUNTERED AT _____ FEET _____ INCHES
_____ FEET _____ INCHES FEET _____ INCHES
_____ FEET _____ INCHES FEET _____ INCHES

Farmation	Color	Hard or Soft	Top	Bottom	Oil, Gas or Water	Depth Found	Remarks
Surface			0	5			
Rock	Red		5	50			
Slate			50	55			
Sand, Broken			55	84			
Rock	Red		84	220			
Slate	White		220	250			
Rock	Red		250	284			
Slate	White		284	300			
Rock	Red		300	310			
Slate	Blue		310	314			
Sand, Limy			314	326			
Rock	Red		326	336			
Lime Shell			336	340			
Rock	Red		340	365			
Slate & Shells			365	402			
Rock	Red		402	485			
Slate	White		485	539			
Shale	Black		539	542			
Slate	White		542	548			
Sand			548	595			
Slate	White		595	604			
Rock	Pink		604	622			
Slate			622	634			
Rock	Red		634	685			
Slate			685	700			
Rock	Red		700	878			
Lime			878	898			
Rock	Red		898	930			
Sand			930	974			
Slate Break			974	981			
Lime			981	998			
Slate	Black		998	1008			
Slate	White		1008	1037			
Sand			1037	1120	Cave Water	1035	
Slate & Shells			1120	1137		1040-1070	2 blr. per hour
Sand			1137	1200			
Slate & Shells			1200	1270			
Sand			1270	1300			
Slate & Shells			1300	1358			



Formation	Color	Hard or Soft	Top	Bottom	Oil, Gas or Water	Depth Found	Remarks
Sand			1358	1405			
Slate & Shells			1405	1510			
Sand			1510	1580	H. F. Water	1540	
Slate & Shells			1580	1620			
Lime, Gritty			1620	1738			
Sand			1738	1760			
Broken Line			1760	1788			
Slate			1788	1792			
Sand			1792	1812			
Slate & Shells			1812	1828			
Shell			1828	1837			
Slate & Shells			1837	1940			
Lime			1940	1970			
Slate & Shells			1970	2170			
Shale	Brown		2170	2184	Berea Horizon		
Lime			2184	2210			
Slate & Shells			2210	2583			
Shale	Gray		2583	3385			
Shale	Brown		3385	3488			
Slate & Shell			3488	3770			
Shale,	Brown		3770	4082			
Slate	White		4082	4450	Gas Smell	4221-4231	
Shale	Brwon		4450	4840			
Shale	Black	MARCELLUS	4840	4850			
				4866	SIM		
✓ Corniff Line			4866	5020			
✓ Sand - ORISKANY			5020	5050			
✓ Lime, Gritty			5050	5065			
Line		Helderberg	5065	5096	TD		
				(485)			
			4866	5020	5050		
			720				
			4146	4300	4330		

Date June 29

10 51

APPROVED

Glen Robert

Owner

By

James

(Initials)