

(+) DENOTES LOCATION OF WELL ON UNITED STATES TOPOGRAPHIC MAPS (7 1/2")

FILE NO. \_\_\_\_\_  
 DRAWING NO. 7261  
 SCALE 1" = 400'  
 MINIMUM DEGREE OF ACCURACY 1/200  
 PROVEN SOURCE OF ELEVATION EXISTING WELL

I THE UNDERSIGNED, HEREBY CERTIFY THAT THIS PLAT IS CORRECT TO THE BEST OF MY KNOWLEDGE AND BELIEF AND SHOWS ALL THE INFORMATION REQUIRED BY LAW AND THE REGULATIONS ISSUED AND PRESCRIBED BY THE DEPARTMENT OF ENERGY.  
 (SIGNED) Carroll Lloyd Bonnett  
 R.P.E. \_\_\_\_\_ L.S. 819



**STATE OF WEST VIRGINIA**  
 DIVISION OF ENVIRONMENTAL PROTECTION  
 SECTION OF OIL & GAS



DATE MAY 17, 19 99  
 OPERATOR'S WELL NO. 7261  
 API WELL NO. \_\_\_\_\_

WELL TYPE: OIL X GAS X LIQUID INJECTION \_\_\_\_\_ WASTE DISPOSAL \_\_\_\_\_  
 (IF "GAS," ) PRODUCTION \_\_\_\_\_ STORAGE X DEEP \_\_\_\_\_ SHALLOW \_\_\_\_\_

LOCATION: ELEVATION 787' WATER SHED Tributary To Tygart Creek  
 DISTRICT STEELE COUNTY WOOD  
 QUADRANGLE ROCKPORT COORDINATES LAT. 39°04'08" LONG. 81°33'02"

SURFACE OWNER COLUMBIA GAS TRANS. CORP. ACREAGE 5.68  
 OIL & GAS ROYALTY OWNER CARROLL LLOYD BONNETT, ET AL. LEASE ACREAGE 44  
 COAL OWNER CARROLL LLOYD BONNETT LEASE NO. 1050954

PROPOSED WORK: DRILL \_\_\_\_\_ CONVERT \_\_\_\_\_ DRILL DEEPER \_\_\_\_\_ REDRILL \_\_\_\_\_ FRACTURE OR STIMULATE X PLUG OFF OLD FORMATION \_\_\_\_\_ PERFORATE NEW FORMATION \_\_\_\_\_ OTHER PHYSICAL CHANGE IN WELL (SPECIFY) Storage Remediation

PLUG AND ABANDON \_\_\_\_\_ CLEAN OUT AND REPLUG \_\_\_\_\_  
 TARGET FORMATION ORISKANY ESTIMATED DEPTH 5068' Existing well drilled in 1954  
 WELL OPERATOR COLUMBIA GAS TRANSMISSION CORP DESIGNATED AGENT RICHARD L. COTY  
 ADDRESS PO Box 1273, Charleston, WV 25325-1273 ADDRESS P O BOX 1273, CHARLESTON, WV 25325-1273

WOOD COUNTY NAME PERMIT 342 F

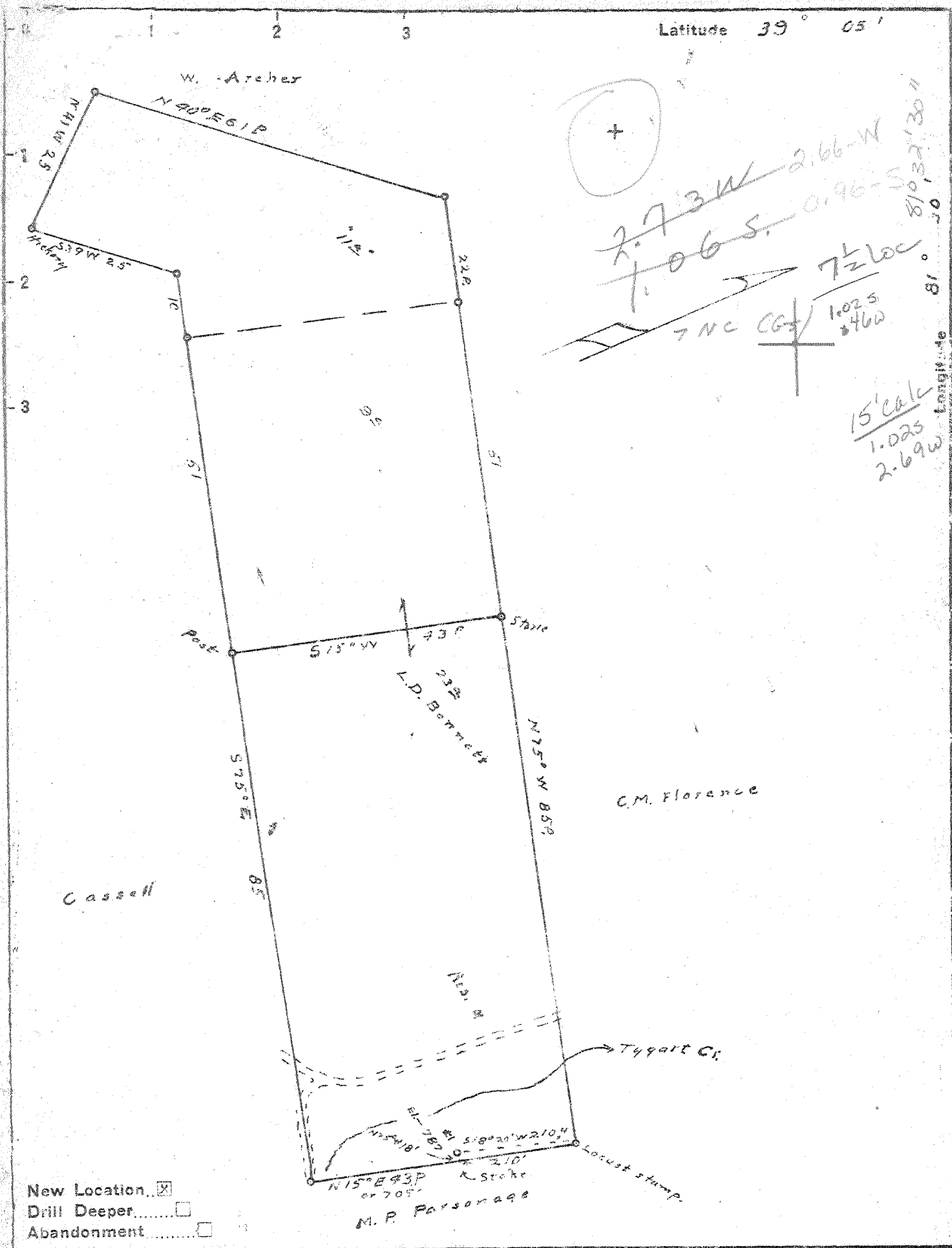
DEEP WELL

JUN 07 1999

Don't DUE

F

Latitude 39° 05'



New Location   
 Drill Deeper   
 Abandonment

Company W & B Gas Co  
 Address P.O. Box 1906 Parkersburg, W. Va.  
 Farm L.D. Bonnett  
 Tract \_\_\_\_\_ Acres 4.3 Lease No. \_\_\_\_\_  
 Well (Farm) No. 1 Serial No. \_\_\_\_\_  
 Elevation (Spirit Level) 787.0  
 Quadrangle Bullsville **SE**  
 County Wood District Steel  
 Engineer \_\_\_\_\_  
 by O. Meredith  
 Engineer's Registration No. \_\_\_\_\_  
 File No. \_\_\_\_\_ Drawing No. \_\_\_\_\_  
 Date Sept 29 50 Scale 1 in = 20 Poles

STATE OF WEST VIRGINIA  
 DEPARTMENT OF MINES  
 OIL AND GAS DIVISION  
 CHARLESTON

**WELL LOCATION MAP**  
 FILE NO. WOO-342-D

+ Denotes location of well on United States Topographic Maps, scale 1 to 62,500, latitude and longitude lines being represented by border lines as shown.

- Denotes one inch spaces on border line of original tracing

Samples 24-F (4940-5030') 9-0279 Deep Well

IMPERIAL TRACING CLOTH  
 K & E CO., N. Y.

WEST VIRGINIA DEPARTMENT OF MINES  
OIL & GAS DIVISION  
W E L L R E C O R D

Permit No. Woc-342  
Belleville Quad.

Dry hole  
Casing & Tubing

Company	W. & B. Gas Co.	13	18	18
Address	Box 1406, Parkersburg, W. Va.	10	614	614
Farm	Bonnett, L. D. Acres 50	8-1/4	1175	1175
District	Steel Wood County Elev. 787	6-5/8	2155	2155
Surface	L. D. Bonnett, Rockport, W. Va.			
Mineral	Same			
Commenced	April 1			
Completed	Aug. 24 /51			
Date Shot	Aug. 31 from 3500 to 4300 With 5300 lbs. gel.			
Open Flow	2/10ths water in 2" 60,000			
Rock Pressure	150 lbs.			

Sand	grey	12	20	
Red Rock	red	20	54	
Shale	blue	54	120	
Sand	gray	120	135	
Shale	blue	135	170	
Lime	gray	170	230	
Shale	red	230	294	
Shale	blue	294	400	
Shale	red	400	505	
Sand	gray	505	540	
Shale	red	540	570	
Shale	blue	570	620	
Slate	white	620	655	
Shale	pink	655	670	
Shale	blue	670	760	
Sand	gray	760	790	
Shale	blue	790	815	
Shale	red	815	860	
Shale	brown	860	880	
Shale	red	880	960	
Shale	blue	960	980	
Shale	red	980	1050	
Sand	brown	1050	1080	
Shale	blue	1080	1125	
Sand	gray	1125	1250	
Shale	blue	1250	1275	
Sand	gray	1275	1325	
Shale	blue	1325	1340	
Sand	gray	1340	1365	
Slate	blue	1365	1440	
Sand	gray	1440	1450	
Slate	blue	1450	1490	
Sand	gray	1490	1620	
Slate	blue	1620	1660	
Sand	gray	1660	1760	
Sand	gray	1760	2000	water
Slate	blue	2000	2700	
Slate	blue	2700	3900	
Shale	brown	3900	4200	
Shale	black	4200	4500	
Shale	brown	4500	4885	
Lime - Onondaga	gray	4885	4999	
Sand - Onondaga	gray	4999	5012	gas
Lime - Helderberg	gray	5012	5024	

485



STATE OF WEST VIRGINIA  
DEPARTMENT OF MINES  
OIL AND GAS DIVISION

Quadrangle Belleville

WELL RECORD

Permit No. W00-342-R

Oil or Gas Well Storage  
(KIND)

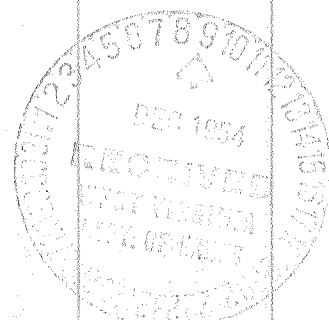
Company UNITED FUEL GAS CO.  
Address P.O. Box 1273, Charleston 25, W. Va.  
Farm F. W. Betts, et al Acres 44  
Location (waters) Tygart Creek  
Well No. X-58-7261 Elev 787'  
District Steele County Wood  
The surface of tract is owned in fee by \_\_\_\_\_  
Address \_\_\_\_\_  
Mineral rights are owned by Fenton W. Betts, et al  
Address Harrisville, W. Va.  
Drilling commenced 4-1-51  
Drilling completed 8-4-51  
Date Shot \_\_\_\_\_ From \_\_\_\_\_ To \_\_\_\_\_  
With \_\_\_\_\_  
Open Flow \_\_\_\_\_ /10ths Water in \_\_\_\_\_ Inch  
\_\_\_\_\_ /10ths Merc. in \_\_\_\_\_ Inch  
Volume \_\_\_\_\_ Cu. Ft.  
Rock Pressure \_\_\_\_\_ lbs. \_\_\_\_\_ hrs.  
Oil \_\_\_\_\_ bbls., 1st 24 hrs.  
Fresh water \_\_\_\_\_ feet \_\_\_\_\_ feet  
Salt water \_\_\_\_\_ feet \_\_\_\_\_ feet

Casing and Tubing	Used in Drilling	Left in Well	Packers
Size			
16		18'	Kind of Packer
13			
10		614'	Size of
8 1/4		1175'	
6 5/8		2155'	Depth set
5 3/16			
3			Perf. top
2			Perf. bottom
Liners Used			Perf. top
			Perf. bottom

CASING CEMENTED \_\_\_\_\_ SIZE \_\_\_\_\_ No. Ft. \_\_\_\_\_ Date \_\_\_\_\_

COAL WAS ENCOUNTERED AT \_\_\_\_\_ FEET \_\_\_\_\_ INCHES  
\_\_\_\_\_ FEET \_\_\_\_\_ INCHES \_\_\_\_\_ FEET \_\_\_\_\_ INCHES  
\_\_\_\_\_ FEET \_\_\_\_\_ INCHES \_\_\_\_\_ FEET \_\_\_\_\_ INCHES

Formation	Color	Hard or Soft	Top	Bottom	Oil, Gas or Water	Depth Found	Remarks
Sand			12	20			
Red Rock			20	54			
Shale			54	120			
Sand			120	135			
Shale			135	170			
Lime			170	230			
Shale			230	294			
Shale			294	400			
Shale			400	505			
Sand			505	540			
Shale			540	570			
Shale			570	620			
Slate			620	655			
Shale			655	670			
Shale			670	760			
Sand			760	790			
Shale			790	815			
Shale			815	860			
Shale			860	880			
Shale			880	960			
Shale			960	980			
Shale			980	1050			
Sand			1050	1080			
Shale			1080	1125			
Sand			1125	1250			
Shale			1250	1275			
Sand			1275	1325			
Shale			1325	1340			
Sand			1340	1365			
Slate			1365	1440			
Sand			1440	1450			
Slate			1450	1490			
Sand			1490	1620			
Slate			1620	1660			
Sand			1660	1760			
Sand			1760	2000	Water		
Slate			2000	2700			
Slate			2700	3900			
Shale			3900	4200			



(Over) 4500

Formation	Color	Hard or Soft	Top	Bottom	Oil, Gas or Water	Depth Found	Remarks
New Hole - Commenced 2-18-54 Completed 3-17-54			15'				
Brown Shale			4500	4904			
Corniferous			4904	5015			
Oriskany			5015	5068			
Total depth			5068'				
This well made 500 M in Oriskany - 24 Hr. R.P. 150#							
					Casing		
					18" Conductor		
					6-5/8" 51' on top 4 1/2"		
					4 1/2" 4955'		
					This well will be used for Oriskany Storage Pool		
					190# R.P. 65 Hr.		
					Shut in 4-23-54		
					4904	5015	
					787	787	
					4117	4228	

Date December 8, 1954

APPROVED UNITED FUEL GAS COMPANY, Owner

By S. L. Terrell  
(Title)

WR 350  
 JAN 13 2000  
 WVE

02-Jun-99  
 API # 47-107-00342 F

State of West Virginia  
 Division of Environmental Protection  
 Section of Oil and Gas  
 Well Operator's Report of Well Work

Reviewed K

Farm name: COLUMBIA GAS TRANSMISSION Operator Well No.: ROCKPORT 7261

LOCATION: Elevation: 787.00 Quadrangle: ROCKPORT

District: STEELE County: WOOD  
 Latitude: 5275 Feet South of 39 Deg. 5 Min. 0 Sec.  
 Longitude 2500 Feet West of 81 Deg. 32 Min. 30 Sec.

Company: COLUMBIA GAS TRANSMISSION  
 P. O. BOX 1273  
 CHARLESTON, WV 25325-1273

Agent: RICHARD L. COTY

Inspector: GLEN ROBINSON  
 Permit Issued: 06/04/99  
 Well work Commenced: 6-21-99  
 Well work Completed: 9-29-99  
 Verbal Plugging  
 Permission granted on: \_\_\_\_\_  
 Rotary Cable  Rig  
 Total Depth (feet) 5068'  
 Fresh water depths (ft) \_\_\_\_\_  
 Not Reported  
 Salt water depths (ft) 1760'

Casing & Tubing Size	Used in Drilling	Left in Well	Cement Fill Up Cu. Ft.
7", 23 lb.		51'	
4-1/2", 12.6 lb.		4965'	1050 sx to surface.

Is coal being mined in area (Y/N)? No  
 Coal Depths (ft): Not Reported

OPEN FLOW DATA \* Storage well - Rates and pressures vary.

Producing formation Oriskany (Storage) Pay zone depth (ft) 5021' - 5030'  
 Gas: Initial open flow \_\_\_\_\_ MCF/d Oil: Initial open flow \_\_\_\_\_ Bbl/d  
 Final open flow N/A MCF/d Final open flow N/A Bbl/d  
 Time of open flow between initial and final tests \_\_\_\_\_ Hours  
 Static rock Pressure \_\_\_\_\_ psig (surface pressure) after \_\_\_\_\_ Hours

Second producing formation \_\_\_\_\_ Pay zone depth (ft) \_\_\_\_\_  
 Gas: Initial open flow \_\_\_\_\_ MCF/d Oil: Initial open flow \_\_\_\_\_ Bbl/d  
 Final open flow \_\_\_\_\_ MCF/d Final open flow \_\_\_\_\_ Bbl/d  
 Time of open flow between initial and final tests \_\_\_\_\_ Hours  
 Static rock Pressure \_\_\_\_\_ psig (surface pressure) after \_\_\_\_\_ Hours

NOTE: ON BACK OF THIS FORM PUT THE FOLLOWING: 1). DETAILS OF PERFORATED INTERVALS, FRACTURING OR STIMULATING, PHYSICAL CHANGE, ETC. 2). THE WELL LOG WHICH IS A SYSTEMATIC DETAILED GEOLOGICAL RECORD OF ALL FORMATIONS, INCLUDING COAL ENCOUNTERED BY THE WELLBORE.

For: COLUMBIA GAS TRANSMISSION CORP.  
 By: Paul C. Amick  
 Date: 12-30-99

WOOD 0342 F

FEB 16 2000

Backed off and replaced top (2) joints of 4-1/2" casing, installed new API 5M wellhead, and pumped an N2-Assist Viking 20 Frac Treatment using 500 gallons of 28% HCL, 513 BBLs of water, 129 MSCF N2, and 22,000 lbs of 20/40 sand at 1 - 4 PPG.