



1700 MacCorkle Ave SE
P.O. Box 1273
Charleston, WV 25325

January 5, 2017

WV DEP – Office of Oil and Gas
601 57th Street SE
Charleston, WV 25304

Enclosed for submittal are forms WR-38 (Affidavit of Plugging and Filling Well) and WR-34 (Discharge Monitoring Report) for Columbia's Rockport storage well 7253 (API 107-00281). Also attached is a "post plugging" wellbore diagram and a copy of the cement bond log.

If questions arise, feel free to contact me.

Regards,

A handwritten signature in blue ink, appearing to read "Jim Amos", is written over a circular stamp.

Jim Amos
Senior Well Services Engineer
Columbia Gas Transmission, LLC
james_amos@transcanada.com
off: 304-373-2412
cell: 304-483-0073

RECEIVED
Office of Oil and Gas
FEB 09 2017
WV Department of
Environmental Protection

04/14/2017

STATE OF WEST VIRGINIA
DEPARTMENT OF ENVIRONMENTAL PROTECTION
OFFICE OF OIL AND GAS

AFFIDAVIT OF PLUGGING AND FILLING WELL

AFFIDAVIT SHOULD BE IN TRIPLICATE, one copy mailed to the Department, one copy to be retained by the Well Operator and the third copy (and extra copies if required) should be mailed to each coal operator at their respective addresses.

Farm name: Province, P. E. etal Operator Well No.: 7253

LOCATION: Elevation: 1001.5 ft (305.3 m) Quadrangle: Rockport, WV
District: Steele County: Wood
Latitude: 515 Feet South of 39 Deg. 3 Min. 30 Sec.
Longitude: 610 Feet West of 81 Deg. 34 Min. 30 Sec.

Well Type: OIL _____ GAS (storage)

Company Columbia Gas Transmission, LLC Coal Operator not operated
1700 MacCorkle Ave SE or Owner _____
Charleston, WV 25325-1273 _____
Agent Paul Amick Coal Operator _____
Permit Issued Date 9/30/2016 or Owner _____

AFFIDAVIT

STATE OF WEST VIRGINIA,
County of Wood ss:

James Amos and Steven Simmons being first duly sworn according to law depose and say that they are experienced in the work of plugging and filling oil and gas wells and were employed by the above named well operator, and participated in the work of plugging and filling the above well say that said work was commenced on the 29 day of November, 2016, and the well was plugged and filled in the following manner:

TYPE	FROM	TO	PIPE REMOVED	LEFT
cement	surface	16'	none	16", 8-5/8", and 3-1/2"
cement	16'	121'	none	8-5/8" and 3-1/2"
cement	121'	885'	none	13-3/8", 8-5/8", and 3-1/2"
cement	885'	965'	none	8-5/8" and 3-1/2"
cement	965'	1235'	none	10-3/4", 8-5/8", and 3-1/2"
cement	1235'	2100'	none	8-5/8" and 3-1/2"
cement	2100'	2162'	none	8-5/8", 7", and 3-1/2"

Description of monument: no monument (offset marker made of 7" steel casing) and that the work of plugging and filling said well was completed on the 29 day of December, 2016.

And further deponents saith not.

Sworn and subscribe before me this 1st day of February, 2017

My commission expires: 5-7-2017

Notary Public

Affidavit reviewed by the Office of Oil and Gas:

Title: 2-2-17

04/14/2017

RECEIVED
Office of Oil and Gas
FEB 09 2017
WV Department of Environmental Protection

1. Additional plugging data on second page.
2. Refer to post P&A wellbore diagram.
3. Non-sealing steel cap (w/ API number tack-welded) installed on top of well csg approximately 30" below GL
4. Offset marker set above grade marker made out of 7" OD steel pipe with the following information affixed:
OFFSET MARKER FOR PLUGGED WELL API 107-00281
DISTANCE AND BEARING TO WELL:
79.0 FT S 60.64 deg E
5. Refer to survey plat and Google Earth aerial.

RECEIVED
 Office of Oil and Gas
 FEB 09 2017
 WV Department of
 Environmental Protection

[Handwritten signature]
 2-2-16

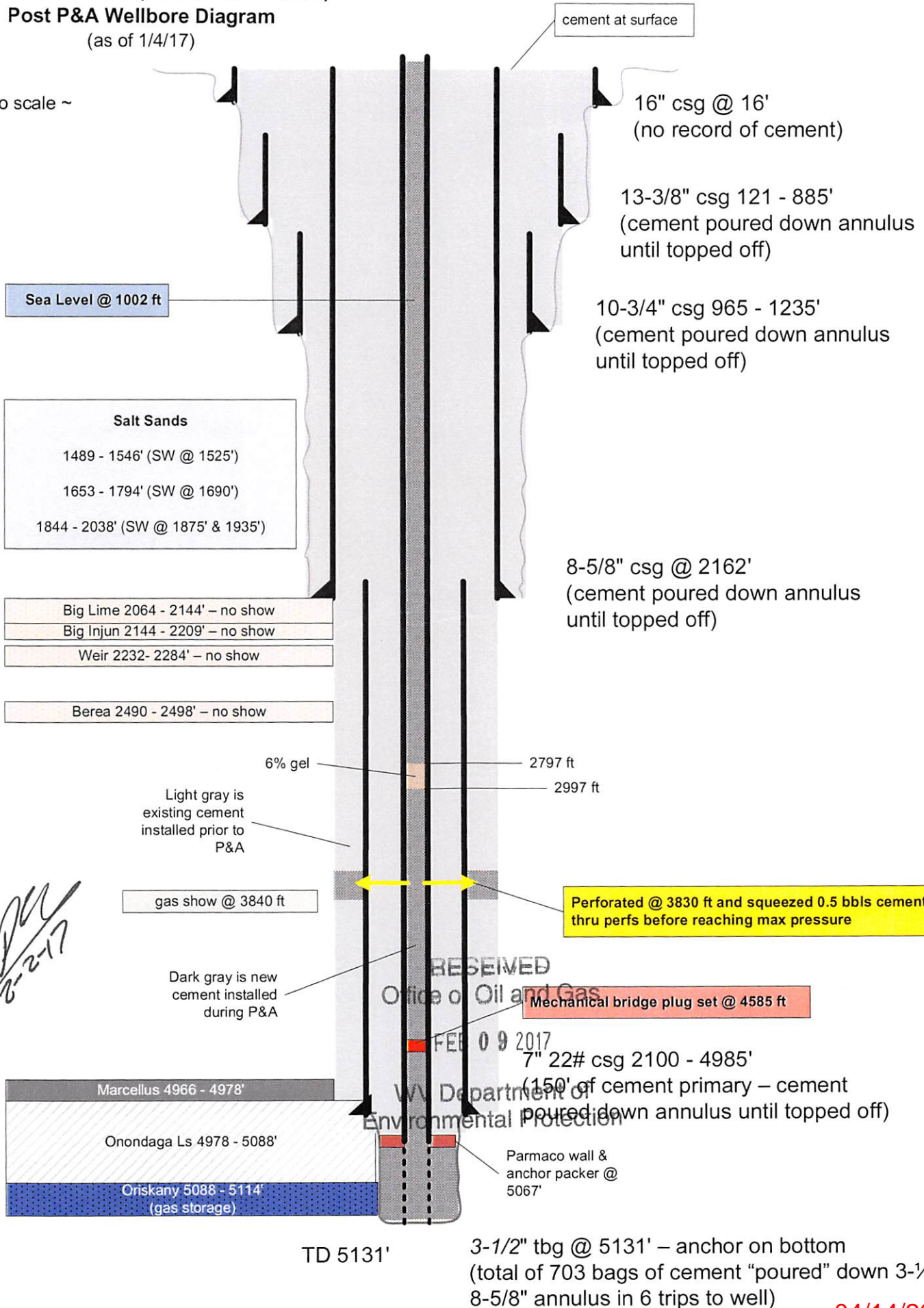
TYPE	FROM	TO	PIPE REMOVED	LEFT
cement	2162'	2797'	none	7" and 3-1/2"
6% gel	2797'	2997'	none	7" and 3-1/2"
cement	2997'	4585'	none	7" and 3-1/2"
mechanical bridge plug	4585'	4588'	none	7" and 3-1/2"
cement	4588'	4985'	none	7" and 3-1/2"
cement	4985'	5117'	none	3-1/2"
solid / debris	5117'	5131' (TD)	none	3-1/2"

ROCKPORT 7253 (API 47-107-00281)

Post P&A Wellbore Diagram

(as of 1/4/17)

~ not to scale ~



Handwritten signature and date: 2-2-17

04/14/2017

Date	Hours	Gas Lost (mcf)	Rig Contractor
10/31/2016	2	Staked LOD.	
11/29/2016		MI and spotted fresh water tank, flowback tank and a rolloff. Filled fresh water tank.	Ellison Dozer & Backhoe
12/5/2016		SICP: 340 psig. Removed 4" companion flange on side valve, hooked up a flowline and blew well down to 0 psig. Removed 4" top companion flange, installed a 4" 2M x 4" 5M DSA and shut well in.	CSI
12/6/2016		SICP: 220 psig. Blew well down thru 3/4" choke to 0 psig. Loaded wellbore with 43 bbls of 9.5 ppg, 4.7 sec visc polymer mud and shut in for night.	Stricklin Dozer & Trucking
12/7/2016		SICP: 100 psig. Blew well down thru 3/4" choke. Topped well off with 1.5 bbls of mud and fluid level stayed at surface. Shut well in. MI and spotted BALS truck.	Stricklin Dozer & Trucking
12/8/2016		SICP: 0 psig. RU BALS and ran a cement bond log from TD to surface.	Baker Atlas Logging Services
12/9/2016		MI CSI rig and spotted on location. Stricklin topped off fresh water tank.	CSI
12/12/2016		CSI MIRU auxiliary rig equipment and spotted pipe tub and BOPs.	CSI
12/13/2016		SICP: 20 psig. Blew well down and loaded hole with 8.5 bbls fresh water. Pressure tested wellhead and BOP stack at 300 low/800 high psig. RIH with cable tools and tagged TD @ 5112'. POOH with tools and rigged up to run pipe.	CSI
12/14/2016		SICP: 20 psig. Blew well down and found fluid level at surface. Observed well for 30 mins to verify status, then made up mule shoe and RIH on 1-1/2" tubing work string to 3307'. Installed and closed tubing valve, pipe rams and side ports and shut down for the night.	CSI
12/15/2016		SICP: 15 psig. Blew well down and found fluid at surface. Picked up 1-1/2" tubing from tub and continued to RIH. Tagged TD at 5120' MG and picked up to 5117' MG. Rigged up CSI pump and cement truck and pumped 5 bbls fresh water to establish circulation, followed by 36 sx (6.3 bbls) of Type 1 cement (15.6 ppg). Displaced with 11.4 bbls of fresh water. Pulled 16 joints of tubing to 4585' and reverse-circulated 24 bbls to the waste tank. Circulated approx 0.75 bbl cement back to the tank. RD pump truck and pulled an additional 5 joints up to 4416'. Installed and closed tubing valve, closed pipe rams and side ports and secured well for night.	CSI
12/16/2016		SITP: 25 psig, SICP: 0 psig. Frigid temps. Bled pressure off tubing and checked and found side valve from casing had ice plug in valve body. Picked up area between needle valve and side valve with methanol and opened side valve to thaw it out. SICP: 0 psig after verifying freeze was removed. After clearing ice blockage in side valve, found pipe ram blocks had ice behind them and would not fully function in open position. Worked remainder of day attempting to thaw and fully operate BOP open without success. Closed well back in and shut down for weekend due to landowner restrictions against weekend work.	CSI
12/19/2016		SITP: 0 psig, SICP: 0 psig. Checked and verified pipe rams would fully function. RIH with tubing to check cement top. Tagged at 4619' MG. POOH with 1-1/2" work string, filling hole as required. MIRU CSI wireline truck. Made up 2.75" OD (2.867" to 3.258" range) premium bridge plug and RIH with CCL, sinker bar, setting tool and bridge plug. Correlated to 12/8/16 Baker Atlas GR/CCL/CBL log. Tagged cement top at 4606', picked up and set plug at 4585'. Slacked off to verify plug set, then POOH with wireline tools. Verified that plug was off tools and RD CSI wireline truck. Closed in master valve, blind rams and side ports and secured well for night.	CSI
12/20/2016		SICP: 0 psig. PU 1-1/2" tubing from the tub, RIH with mule shoe on bottom and tagged cast iron bridge plug at 4585'. RU CSI pump truck and bulk cement truck, pumped a 5 bbl fresh water spacer followed by 6.5 bbls (31 sx) of Type 1 cement (15.6 ppg) and displaced down tubing with 9.5 bbls fresh water. Pulled and laid down 22 jts of tubing to set bottom of pipe at 3838' MG. Reverse-circulated 19 bbls fluid to waste tank, then pulled and laid an additional 23 jts tubing in tub to set bottom of pipe at 3071.50'. Installed and closed tubing valve, pipe rams and side ports and secured well for night. Stricklin hauled 120 bbls fresh water to location and installed (2) new butterfly valves on water tank.	CSI
12/21/2016		SITP: 0 psig, SICP: 0 psig. Resumed POOH with 1-1/2" tubing work string, loading hole as required. RU CSI wireline truck, RIH with weight bar and found cement top at 3843'. POOH with weight bar, RIH with the perf strip (4 spf, 180 deg phasing, 0.49" dia holes, Owen charges, 12.56" penetration) and shot squeeze perfs 3830' to 3831'. POOH with wireline and verified shots fired. RD CSI wireline. RIH with mule shoe on 1-1/2" tubing work string to 3838'. Verified hole was full, then installed and closed tubing valve, pipe rams and side ports and secured well for night.	CSI
12/22/2016		SITP: 0 psig, SICP: 0 psig. Well on slight vacuum. RU CSI pump and bulk cement trucks, pumped 5 bbls of fresh water and established circulation at 4 bbls. Pumped 35 sx (7.3 bbls) of Type 1 cement (15.6 ppg) and displaced with 7.3 bbls of fresh water. POOH with tubing to 3003' and reverse-circulated with 15 bbls fresh water. Pulled an additional 5 jts tubing and attempted to squeeze cement through perfs. Pumped 0.5 bbls of fresh water and well pressured up to 250 psig with no leakoff. Shut well in leaving 250 psig on the tubing. RD CSI pump and bulk cement truck and secured the well for the holiday weekend.	CSI

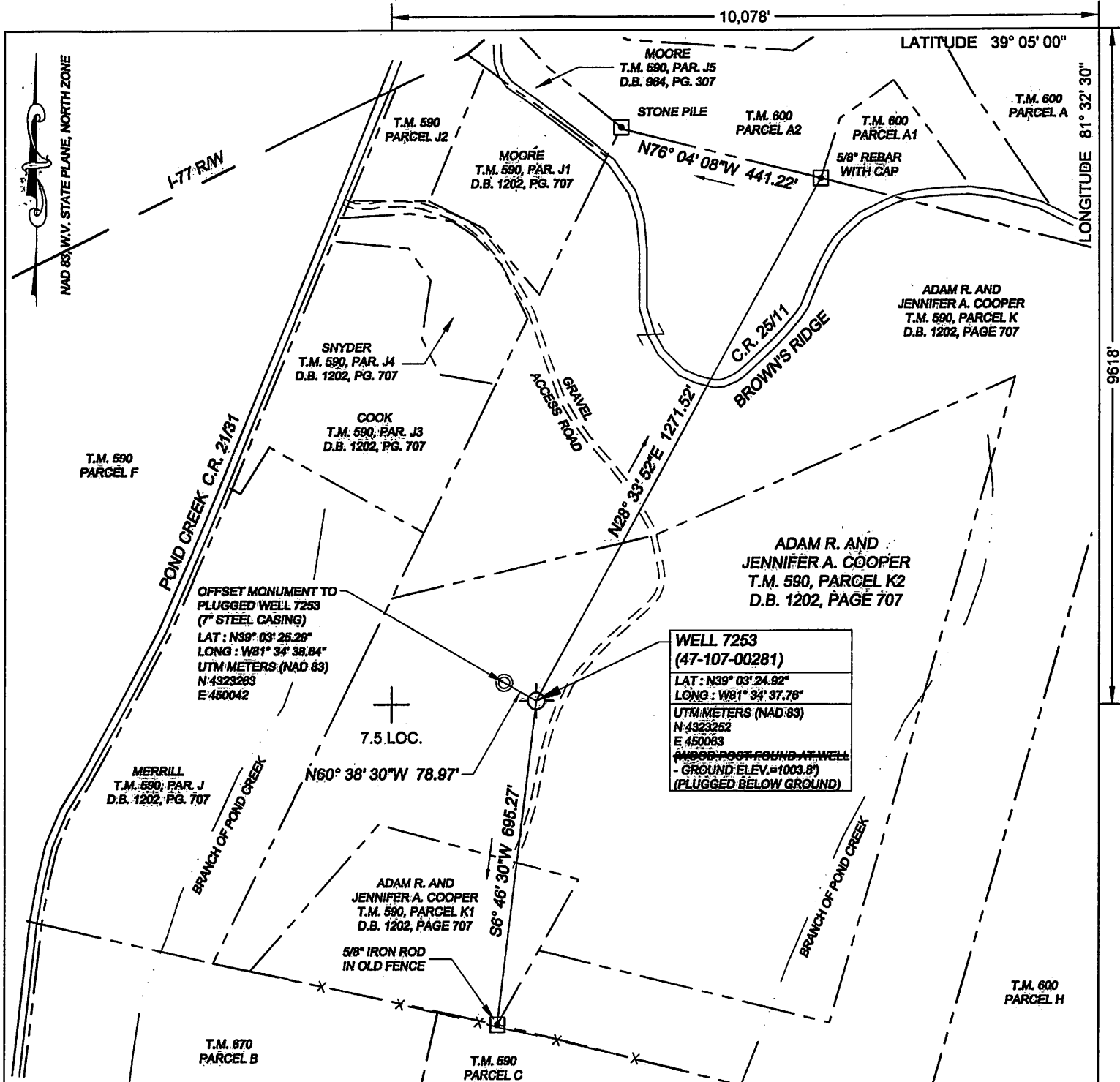
Environmental Protection
 WV Department of

Office of
 Oil and Gas

Date	Hours	Gas Lost (mcf)	Rig Contractor
12/27/2016		SITP: 0 psig, SICP: 0 psig. RBIH with 1-1/2" tubing and found cement top @ 3797'. Rigged up cement truck, pumped 7 bbls of Type 1 cement (15.6 ppg) and displaced with 4.8 bbls fresh water. Pulled tubing to 2997' and spotted 1.7 bbls of 6% gel, then pulled tubing up to 2797', pumped 7.8 bbls of Type 1 cement (15.6 ppg) and displaced with 1.7 bbls fresh water. Pulled tubing up to 1897', pumped 7.8 bbls Type 1 cement (15.6 ppg) and displaced with 1.6 bbls fresh water. Pulled tubing up to 997', reverse-circulated with 25 bbls fresh water and pulled out of hole with tubing.	CSI
12/28/2016		RIH with cable tools and tagged cement top @ 1128'. ND wellhead stack and demolished cellar around casings. Found that 3-1/2" and 7" casings were both cemented to surface. Covered hole and shut down for night.	CSI
12/29/2016		SICP: 0 psig. Cemented 3-1/2" tubing to surface with 9.2 bbls Type 1 cement (15.6 ppg). RDMO service rig and all rig equipment.	CSI
12/30/2016		Ellison MO flowback and fresh water tanks. MO BOP trailer and worked driveway. Stricklin welded ID plate on casing stub and set monument at edge of field for surveying.	Ellison Dozer & Backhoe

2

RECEIVED
Office of Oil and Gas
FEB 09 2017
WV Department of
Environmental Protection



**WELL 7253
(47-107-00281)**
 LAT: N39° 03' 24.82"
 LONG: W81° 34' 37.78"
 UTM METERS (NAD:83)
 N: 4323252
 E: 450083
 (NO POST FOUND AT WELL - GROUND ELEV. = 1003.8')
 (PLUGGED BELOW GROUND)

**OFFSET MONUMENT TO
PLUGGED WELL 7253
(7" STEEL CASING)**
 LAT: N39° 03' 25.29"
 LONG: W81° 34' 38.84"
 UTM METERS (NAD:83)
 N: 4323283
 E: 450042

7.5 LOC.

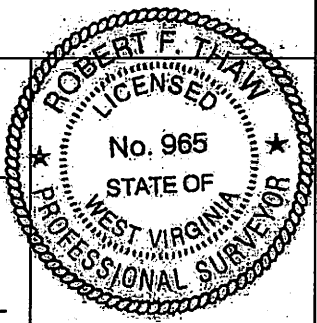
RECEIVED

(+) DENOTES LOCATION OF WELL ON UNITED STATES TOPOGRAPHIC MAPS

Office of Oil and Gas

I THE UNDERSIGNED, HEREBY CERTIFY THAT THIS PLAT IS CORRECT TO THE BEST OF MY KNOWLEDGE AND BELIEF AND SHOWS ALL THE INFORMATION REQUIRED BY LAW AND THE REGULATIONS ISSUED AND PRESCRIBED BY THE DIVISION OF ENVIRONMENTAL PROTECTION.

(SIGNED) Robert F. Thaw 1/23/17
 ROBERT F. THAW PS #965



PLACE SEAL HERE

FILE No. 1701-2345-001
 DRAWING No. 1601-2345-001
 SCALE 1"=300'
 MINIMUM DEGREE OF ACCURACY 1:200
 PROVEN SOURCE OF ELEVATION TRIMBLE R8-3
 GPS UNIT

STATE OF WEST VIRGINIA
 DIVISION OF ENVIRONMENTAL PROTECTION
 OFFICE OF OIL AND GAS
 NITRO, WV

DATE JANUARY 23 2017
 OPERATOR'S WELL No. 7253
 API WELL No. 47 107 - 00281

WELL TYPE: OIL GAS LIQUID INJECTION WASTE DISPOSAL STATE COUNTY PERMIT
 (IF "GAS") PRODUCTION STORAGE DEEP SHALLOW

LOCATION: ELEVATION 1003.8' WATER SHED POND CREEK - A TRIBUTARY OF THE OHIO RIVER
 DISTRICT STEELE COUNTY WOOD
 QUADRANGLE ROCKPORT, WV

SURFACE OWNER ADAM R. AND JENNIFER A. COOPER ACREAGE 26
 OIL & GAS ROYALTY OWNER GLEN BROWN, ET UX LEASE ACREAGE 62
 LEASE No. 1051309-000 STORAGE LEASE 1051309-000

PROPOSED WORK: DRILL CONVERT DRILL DEEPER REDRILL FRACTURE OR
~~STIMULATE~~ PLUG OFF OLD FORMATION PERFORATE NEW
 FORMATION OTHER PHYSICAL CHANGE IN WELL (SPECIFY) PLUG AND ABANDON

PLUG AND ABANDON CLEAN OUT AND REPLUG

TARGET FORMATION ORISKANY ESTIMATED DEPTH 5088-5114 FT
 WELL OPERATOR COLUMBIA GAS TRANSMISSION, LLC DESIGNATED AGENT PAUL AMICK
 ADDRESS PO BOX 1273, CHARLESTON, WV ADDRESS P.O. BOX 1273, CHARLESTON W.V.
25325-1273 25325-1273

FORM IV-6 (8-78)

25235-1273
 WELL OPERATOR COLUMBIA GAS TRANSMISSION, LLC
 ADDRESS PO BOX 1273, CHARLESTON, WV
 DESIGNATED AGENT PAUL AMICK
 ESTIMATED DEPTH 5088-2114 FT
 PLUG AND ABANDON X CLEAN OUT AND REPLUG

FORMATION OTHER PHYSICAL CHANGE IN WELL (SPECIFY) PLUG AND ABANDON
 STIMULATE X PLUG OFF OLD FORMATION PERFORATE NEW
 DRILL CONVERT DRILL DEEPER REDRILL FRACTURE OR
 LEASE No. STORAGE LEASE 1051309-000
 LEASE ACREAGE 62
 SURFACE OWNER ADAM R. AND JENNIFER A. COOPER
 OIL & GAS ROYALTY OWNER GLEN BROWN, ET UX
 QUADRANGLE ROCKPORT, WV
 DISTRICT STEELE
 LOCATION: ELEVATION 1003.8' WATER SH.D POND CREEK - A TRIBUTARY OF THE OHIO RIVER
 (IF "GAS") PRODUCTION STORAGE X DEEP X SHALLOW
 WELL TYPE: OIL X GAS X LIQUID INJECTION WASTE DISPOSAL STATE COUNTY PERMIT
 NITRO, WV

04/14/2017

STATE OF WEST VIRGINIA
 DIVISION OF ENVIRONMENTAL PROTECTION
 OFFICE OF OIL AND GAS



DATE JANUARY 23 2017
 OPERATOR'S WELL No. 7253
 API WELL No. 47 107 - 00281

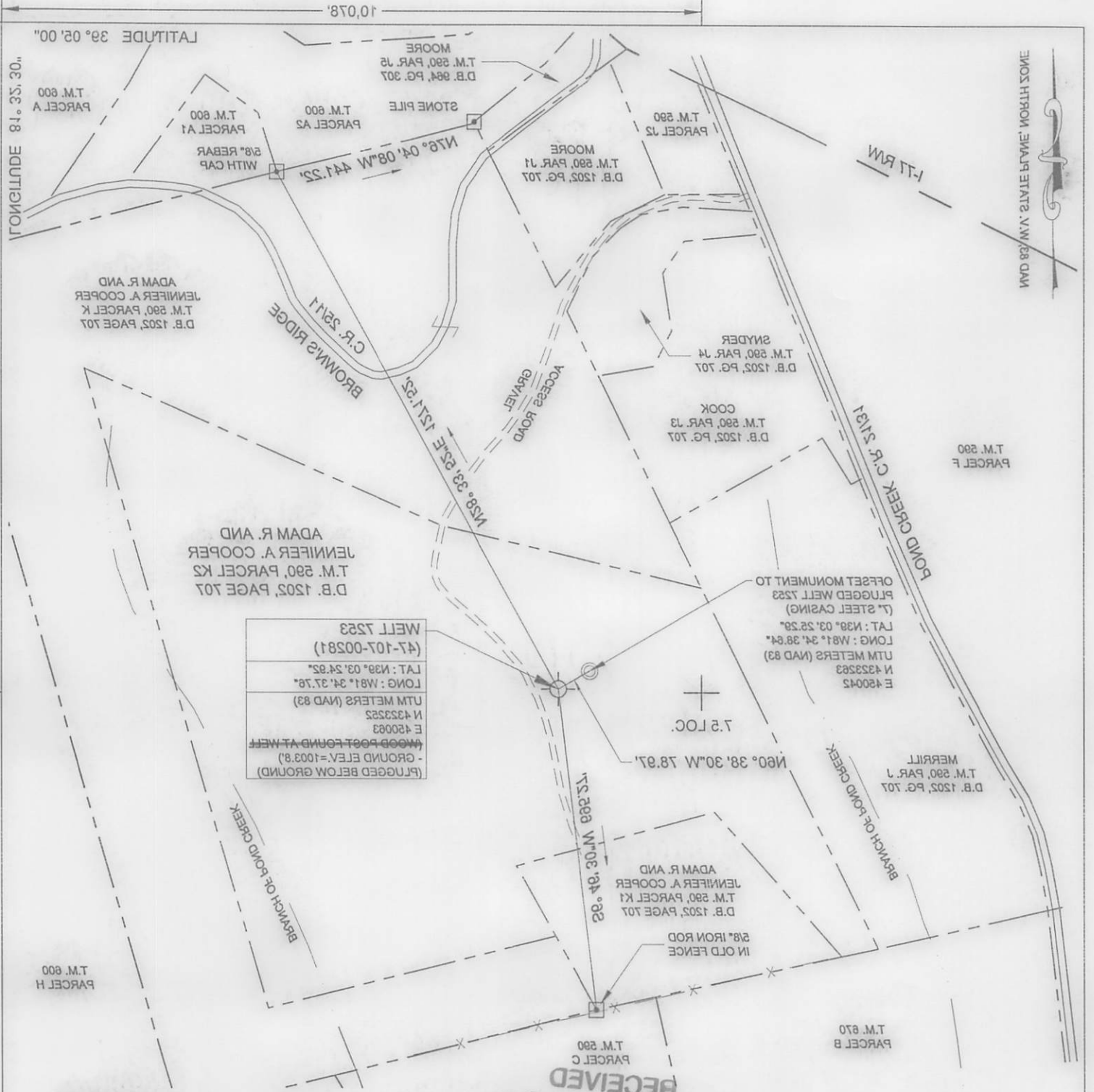
GPS UNIT
 ELEVATION TRIMBLE R8-3
 PROVEN SOURCE OF
 ACCURACY 1:200
 MINIMUM DEGREE OF
 SCALE 1"=300'
 DRAWING No. 1601-2345-001
 FILE No. 1701-2345-001

DIVISION OF ENVIRONMENTAL PROTECTION
 INFORMATION ISSUED AND PRESCRIBED BY THE
 KNOWLEDGE AND BELIEF AND SHOWS ALL THE
 THIS PLAN IS CORRECT TO THE BEST OF MY
 I THE UNDERSIGNED, HEREBY CERTIFY THAT

ROBERT F. THAW PS #665 (SIGNED)



(+) DENOTES LOCATION OF WELL ON UNITED STATES TOPOGRAPHIC MAPS



LATITUDE 39° 05' 00"
 LONGITUDE 81° 35' 30"
 T.M. 800
 PARCEL A

8198

5002 HTRON 5MAY1971 1038 QAM

Rockport Well 7253 (107-00281)

Offset Plugging Marker

Offset Marker for Plugged Well 107-00281

78.97 ft
S 60.6417 deg E

Rockport - 07253 (API 107-00281)



100 ft

04/14/2010