

WW-7
8-30-06

RECEIVED
Office of Oil and Gas

SEP 06 2016

WV Department of
Environmental Protection



West Virginia Department of Environmental Protection
Office of Oil and Gas

WELL LOCATION FORM: GPS

API: 107-00281 WELL NO.: 7253

FARM NAME: Province, P. E., etal

RESPONSIBLE PARTY NAME: Columbia Gas Transmission, LLC

COUNTY: Wood DISTRICT: Steele

QUADRANGLE: Rockport, WV

SURFACE OWNER: Adam R. & Jennifer A. Cooper

ROYALTY OWNER: N/A - storage lease 1051309-000

UTM GPS NORTHING: 4323252.9 m

UTM GPS EASTING: 450062.5 m GPS ELEVATION: 305.3 m

The Responsible Party named above has chosen to submit GPS coordinates in lieu of preparing a new well location plat for a plugging permit or assigned API number on the above well. The Office of Oil and Gas will not accept GPS coordinates that do not meet the following requirements:

1. Datum: NAD 1983, Zone: 17 North, Coordinate Units: meters, Altitude: height above mean sea level (MSL) – meters.
2. Accuracy to Datum – 3.05 meters
3. Data Collection Method:

Survey grade GPS : Post Processed Differential

Real-Time Differential

Mapping Grade GPS : Post Processed Differential

Real-Time Differential

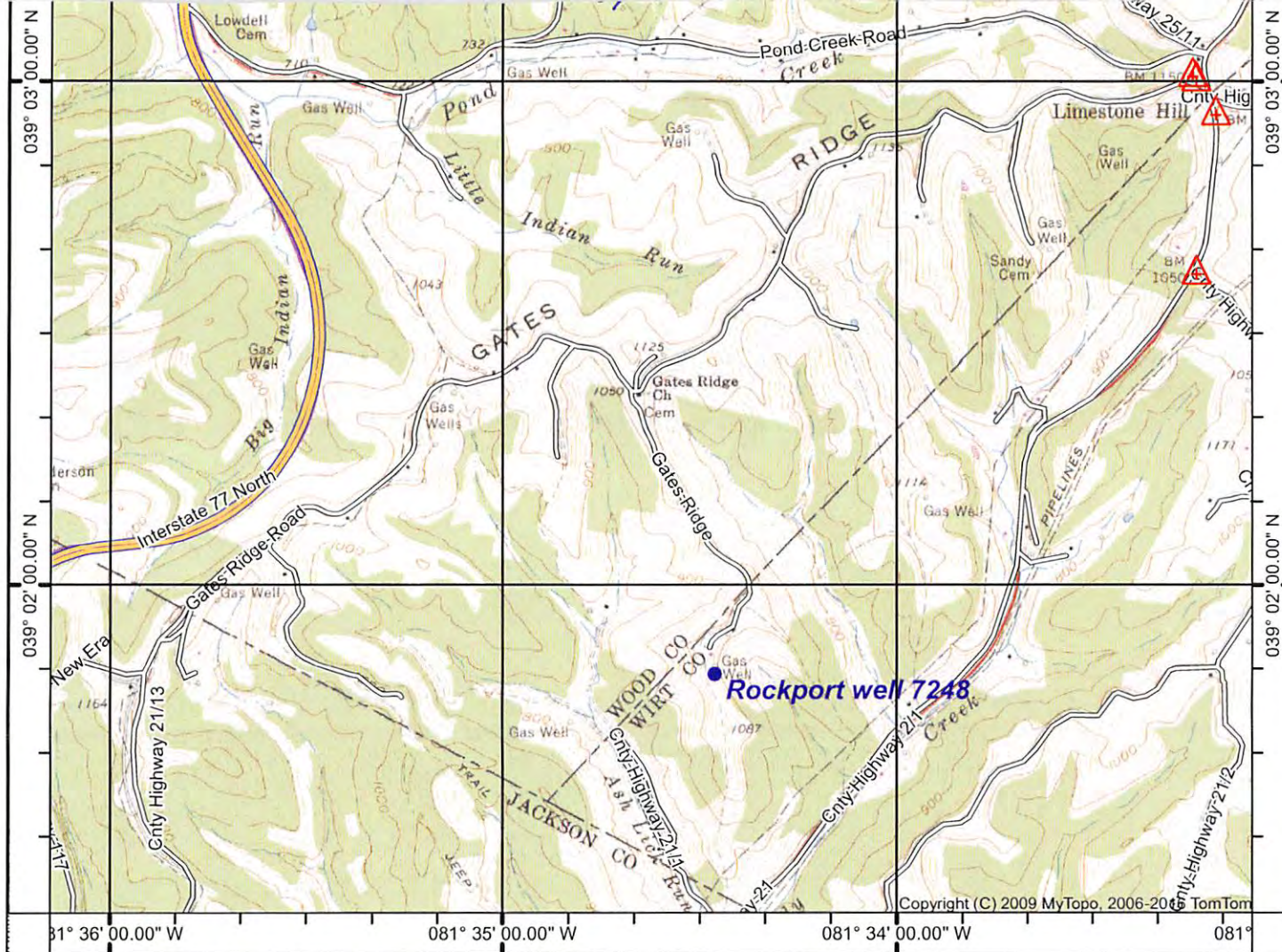
4. Letter size copy of the topography map showing the well location.

I the undersigned, hereby certify this data is correct to the best of my knowledge and belief and shows all the information required by law and the regulations issued and prescribed by the Office of Oil and Gas.

Signature

Senior Well Services Engineer
Title

9/6/2016
Date



039° 01' 20.63" N 081° 36' 09.57" W 039° 02' 00.00" N 081° 35' 00.00" W 039° 03' 00.00" N 081° 34' 00.00" W 081° 33' 05.13" W 039° 01' 20.63" N

(SANDYVILLE)

(REEDY)

Produced by MyTopo Terrain Navigator
Topography based on USGS 1:24,000 Maps

North American 1983 Datum (NAD83)
Polyconic Projection

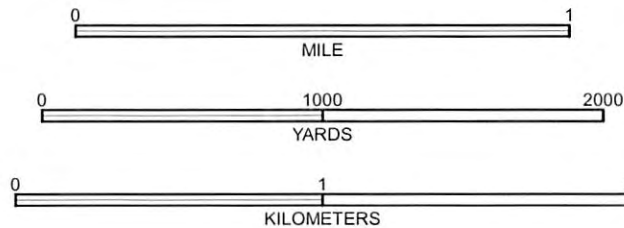
To place on the predicted North American 1927 move the
projection lines 9M N and 13M E

Declination



GN 0.36° W
MN 7.90° W

(LIVERPOOL)
SCALE 1:24000



CONTOUR INTERVAL 20 FEET
NATIONAL GEODETIC VERTICAL DATUM 1929

ROCKPORT, WV
1960

RECEIVED
 Official Oil and Gas
 Survey
 WV Department of
 Environmental Protection
 2/16

Printed: Mon Jul 18, 2016

Copyright (C) 2009 MyTopo, 2006-2016 TomTom