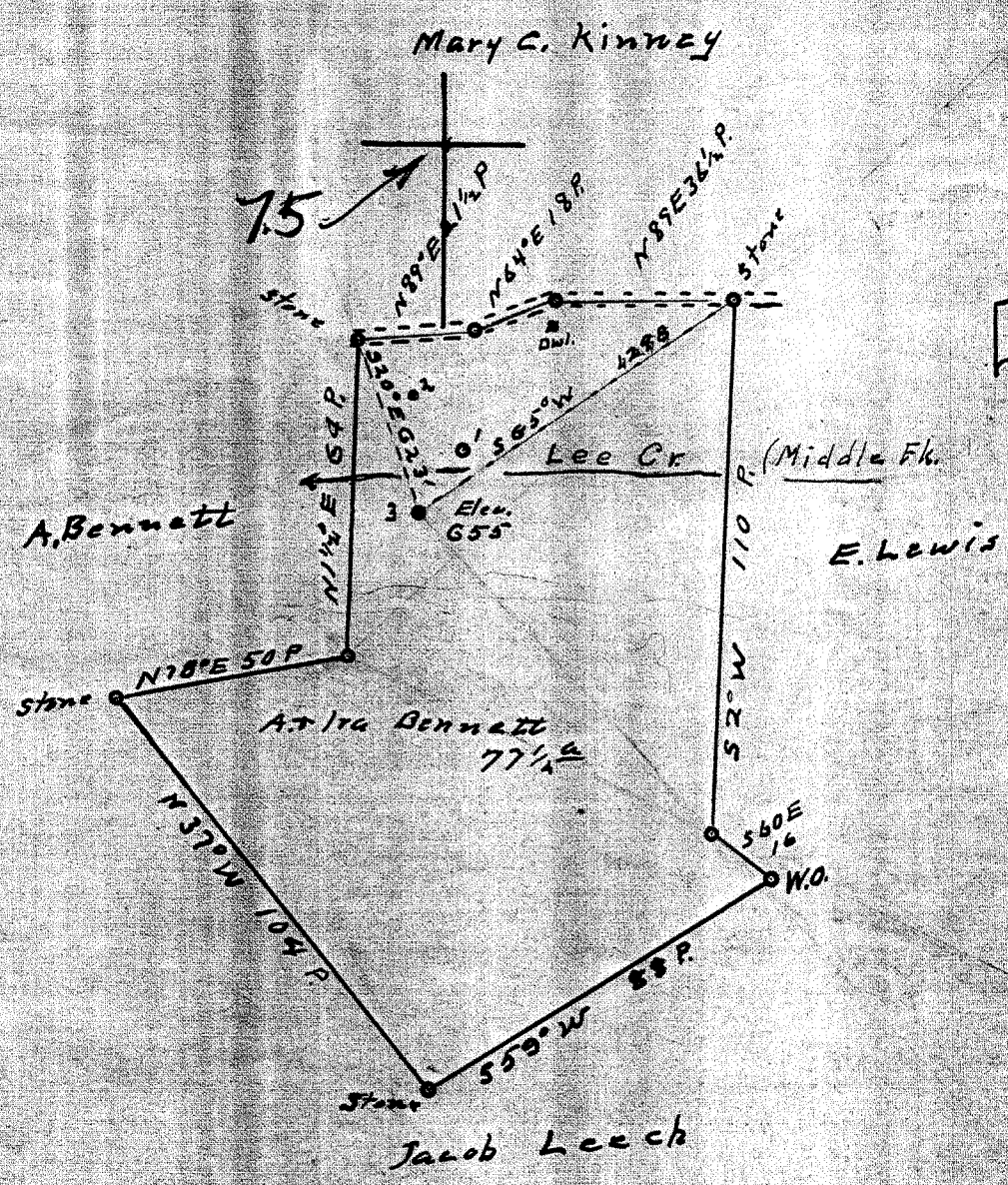


Latitude 39°

Janil
5/1/96

10'
1597.5

Longitude 81° 40'
7400'



- New Location
- Drill Deeper
- Abandonment

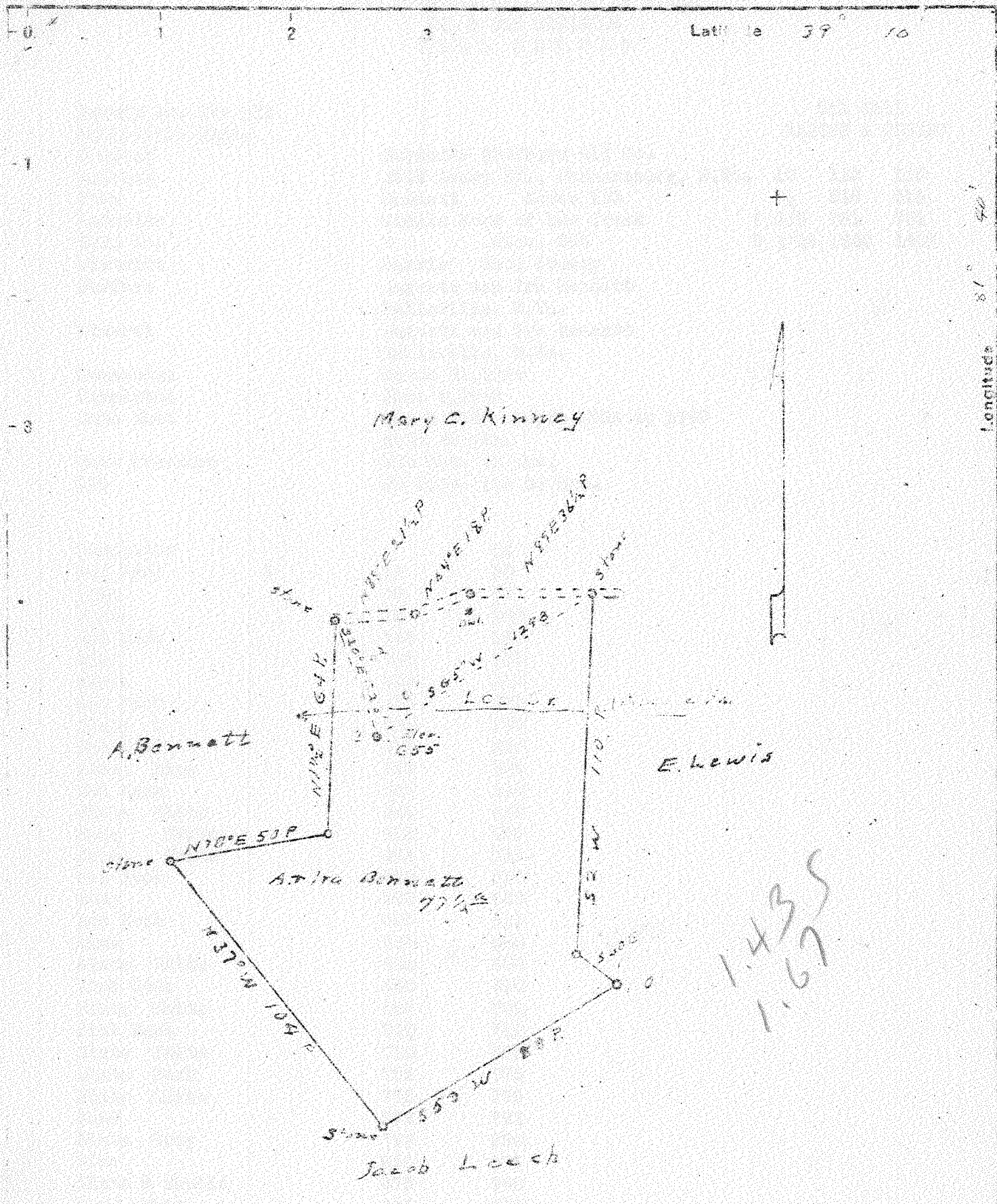
D.D. Oil Company c/o David Dale
P.O. Box 604- Spencer, WVa. 25276-604

STATE OF WEST VIRGINIA
DIVISION OF ENVIRONMENTAL PROTECTION
OFFICE OF OIL & GAS
NITRO, WEST VIRGINIA 25143

Parkersburg, W. Va.
Farm Augusta and Ira Bennett
Tract _____ Acres 77 1/2 Lease No. _____
Well (Farm) No. 3 Serial No. _____
Elevation (Spirit Level) 655'
Quadrangle Belleville 15 / Lubek 7.5
County Wood District Harris
Engineer by Robert R. Lindeman
O. Meredith
Engineer's Registration No. 296
File No. _____ Drawing No. _____
Date Dec 13 1948 Scale 1 in = 40 Poles

WELL LOCATION MAP
Oil Well No. 47-107-00273-P
Chancellor
+ Denotes location of well on United States Topographic Maps, scale 1 to 62,500, latitude and longitude lines being represented by border lines as shown.
- Denotes one inch spaces on border line of original tracing.

JUL 11 1996



New Location X
 Drill Deeper
 Abandonment

Company Burdette Brothers
 Address 2509 Avery St
Parkersburg W. Va
 Farm A. Augusta and Ira Bennett
 Tract Acres 77 1/4 Lease No. _____
 Well (Farm) No. 3 Serial No. _____
 Elevation (Spirit Level) 505'
 Quadrangle Belleville WC
 Township Wood District Harris
 Engineer By Or Meredith
 Engineer's Registration No. _____
 File No. _____ Drawing No. _____
 Date Dec 13 1948 Scale 1" = 40 Feet

STATE OF WEST VIRGINIA
 DEPARTMENT OF MINES
 OIL AND GAS DIVISION
 CHARLESTON

WELL LOCATION MAP
 FILE NO. WGP-273

X Denotes location of well on United States Topographic Maps, scale 1 to 62,500, latitude and longitude lines being represented by border lines as shown.
 - Denotes one inch spaces on border line of original tracing.

6-6-0

WEST VIRGINIA DEPARTMENT OF MINES
OIL & GAS DIVISION
W E L L R E C O R D

Permit No. Woo 273				
Belleville Quad.				Oil Well
Company	Burdette Brothers Oil Co.			CASING & TUBING
Address	2509 Avery St., Parkersburg, W.Va.	10	115	115
Farm	Bennett Acres 135	8½	518	518
Location	Middle Fork of Lee Creek	6 5/8	781	781
Well No.	3 Elev. 648	5 3/16	1600	1600
District	Harris Wood County			
Surface	Augusta and Ira Bennett Belleville, W.Va.			
Mineral	Augusta and Ira Bennett Belleville, W.Va.			
Commenced	March 31, 1949			
Completed	June 4, 1949			
Date shot	May 9, 1949			
Rock Pressure	Depth 1928 to 1940			
Oil	with 30 qts. 100 lbs. 12 hrs. 20 bbls. 1st 24 hrs.			
Conductor				
Red Rock	S	16	50	
Lime		50	75	
Slate		75	140	
Red Rock		140	180	
Sand		180	205	
Slate		205	210	
Red Rock		210	235	
Slate W		235	275	
Red Rock		275	290	
Slate Blue		290	335	
Red Rock		335	345	
Slate White		345	415	
Sand White		415	496	
Slate White		496	518	
Red Rock		518	590	
Sand		590	605	
Red Rock		605	635	
Lime		635	640	
Slate White		640	650	
Pink Rock		650	690	
Slate White		690	700	
Pink Rock		700	710	
Slate White		710	755	
Slate Dark		755	775	
Slate White		775	779	
Sand		779	793	
Slate Gray		793	850	
Lime		850	875	
Slate & Shells		875	940	
Sand White		940	955	
Slate & Shells		955	980	
Sand		980	1010	
Slate & Shells		1010	1085	
Sand White		1085	1105	
Slate Black		1105	1135	
Sand Dark		1135	1170	
Slate Black		1170	1220	
Sand		1220	1280	
Slate & Shells		1280	1293	
Sand		1293	1530	Water 263
Slate Black		1530	1535	Settling Sand 480-488
Sand		1535	1573	Water 1158
Slate		1573	1586	Water 1430 H.F.
Sand		1586	1596	
Lime		1596	1602	
Slate & Shells		1602	1904	
Shale Brown		1904	1928	
Berea Grit		1928	1940½	Oil