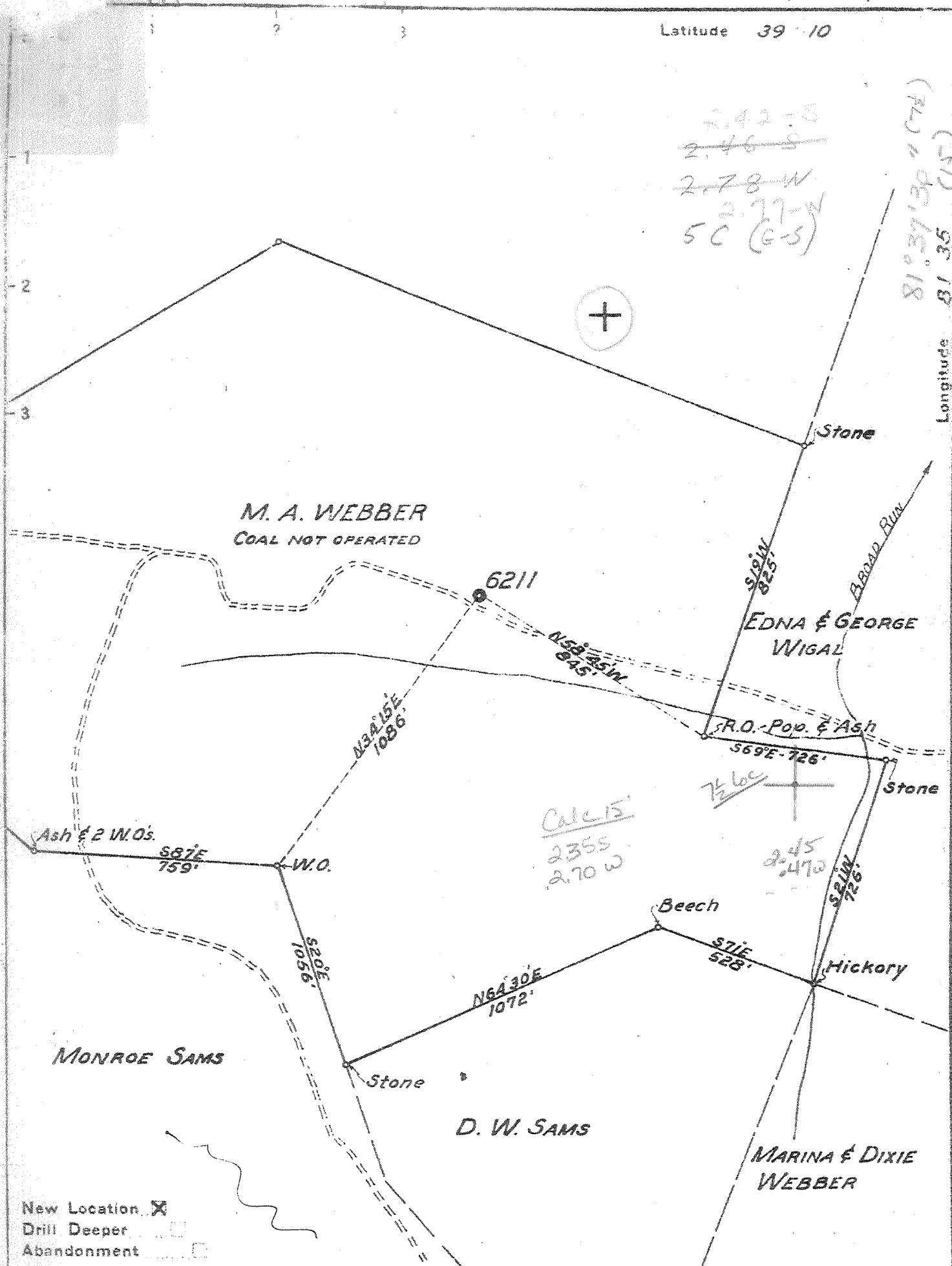


AM

P

Latitude 39 10



2,42-S
~~2,46-S~~
 2,78-W
~~2,77-W~~
 5C (G-S)

81°37'30" (72)
 Longitude 81 35 (15)

Calc 15
 2355
 2.70 W

2.45
 2.47 W

Company UNITED FUEL GAS CO.
 Address CHARLESTON, W. VA.
 Farm M.A. WEBBER
 Tract _____ Acres 121 Lease No. 44701
 Well (Farm) No. _____ Serial No. 6211
 Elevation (Spirit Level) 818.3'
 Quadrangle BELLVILLE - C
 County WOOD District STEELE
 Engineer J. H. Moore
 Engineer's Registration No. 662
 File No. 60-113 Drawing No. _____
 Date JUNE 2, 1947 Scale 1" = 400'

STATE OF WEST VIRGINIA
 DEPARTMENT OF MINES
 OIL AND GAS DIVISION
 CHARLESTON

WELL LOCATION MAP
 FILE NO. WOOD-228

+ Denotes location of well on United States Topographic Maps, scale 1 to 62,500, latitude and longitude lines being represented by border lines as shown.

- Denotes one inch spaces on border line of original tracing.

Deep Well

Box Hole

WOOD 728

Cork Lg. 4515 - 4625

Oriskany 4625 - 4666

Lime 4666 - 5541

Newburg (calcite) 5541 - 5566 (note 5541)

Lime 5566 - 5703

Big Six Sand 5703 - 5735

Lime 5735 - 6062

Red rock 6062 - 6064

Slate 6064 - 6075

Clinton Sand 6075 - 6141

Lime 6141 - 6200

Sand 6200 - 6212

Red Medina 6212 - 6590

Slate 6590 - 6595

Red Medina 6595 - 6607

Slate 6607 - 6627

T.D. 6627 (Apr. 17, 1943) Flagged

5541

5541

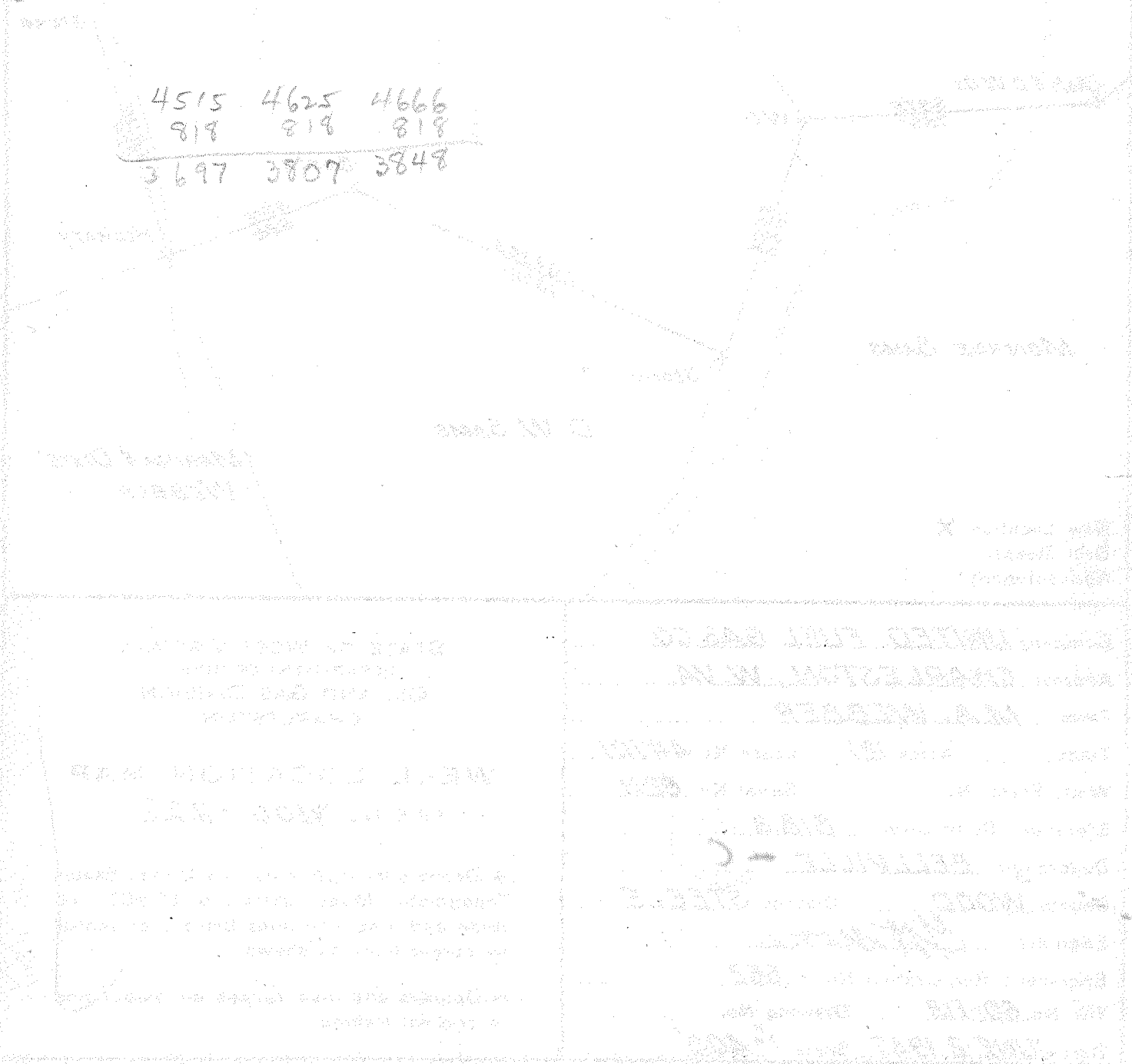
4625

818

916

723

4515	4625	4666
818	818	818
3697	3807	3848



Box Hole

Steale District, Wood County, W. Va.

By United Fuel Gas Co., Box 1273, Charleston, 25, W. Va.

Drilled under permit No. 228; Bellefonte quadrangle.

In 121 acres, on North Fork.

Elevation, 818.3' L.

Minerals owned by M. A. Webber, R. F. D. No. 2, Bellefonte, W. Va.

Drilling commenced July 25, 1947; completed April 17, 1948.

Well was not shot.

Fresh water, 340', 1 bailer per hour; 1143', 1 bailer per hour.

Salt water, 1575', hole full; 2641'.

13-3/8" casing, 562'; 10" casing, 1074'; 8" casing, 2006'; 7" casing, 4534'; all left in.

Coal was encountered at 620-624'.

Dry hole. Record from Smith May 17, 1949.

	Top.	Bottom.
Red rock	0	75
Slate	75	100
Red rock	100	300
Sand	300	375
Red rock	375	500
Sand	500	525
Red rock	525	550
Lime	550	565
Red rock	565	590
White slate	590	620
Coal	620	624
Slate and shells	624	700
Sand	700	740
Red rock	740	785
Slate and shells	785	800
Red rock (cave, 805 and 848')	800	875
White slate	875	905
Red rock	905	1015
Lime	1015	1035
Slate	1035	1060
Lime	1060	1106
Pink rock	1106	1115
Sand	1115	1158
Slate and shells	1158	1200
Sand	1200	1275
Slate	1275	1315
Sand	1315	1615
Lime	1615	1660
Slate	1660	1700
Lime	1700	1720
Slate and shells	1720	1945
Sand	1945	2000
Lime	2000	2010
Slate and shells	2010	2170
Gritty lime	2170	2200
Slate and shells	2200	3300
Shale	3300	3500
Slate and shells	3500	3700
Brown shale	3700	3870
White slate	3870	4280
Brown shale	4280	4515

H. A. WILSON NO. 6211 WELL (Continued).

	Top.	Bottom.
Corniferous lime	4515	4625
Crinkly Sand	4625	4666
lime	4666	5542
Wayburg (oolite) (inter, 5542')	5542	5566
lime	5566	5703
Big Six Sand	5703	5735
Broken lime	5735	5756
Red lime	5756	5839
Broken lime	5839	5849
Red lime	5849	5880
Broken lime	5880	5965
Red lime	5965	6022
Red lime	6022	6062
Red rock	6062	6064
Slate	6064	6075
Clinton Sand	6075	6141
lime	6141	6200
rock	6200	6212
Red Medina	6212	6590
Slate	6590	6595
Red Medina	6595	6607
Slate	6607	6627
Total depth		6627



STATE OF WEST VIRGINIA
DEPARTMENT OF MINES
OIL AND GAS DIVISION

13" and 10" pipe pulled

204

WELL RECORD
ABANDONMENT

Permit No. W00-228-P

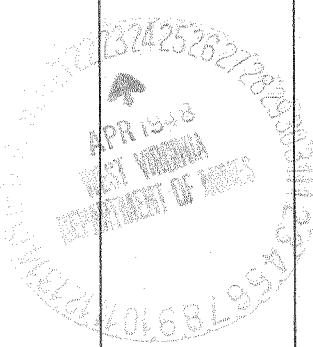
Oil or Gas Well Dry Hole
(KIND)

Company United Fuel Gas Company
 Address P.O. Box 1273, Charleston 25, W. Va.
 Farm M. A. Webber Acres 121
 Location (waters) North Fork
 Well No. 6211 Elev. 818 3/4
 District Steele County Wood
 The surface of tract is owned in fee by _____
 Address _____
 Mineral rights are owned by M. A. Webber
R.F.D. #2 Address Belleville, W. Va.
 Drilling commenced 7-25-47
 Drilling completed 4-17-48
 Date Shot Not Shot From _____ To _____
 With _____
 Open Flow _____ /10ths Water in _____ Inch
 _____ /10ths Merc. in _____ Inch
 Volume _____ Cu. Ft.
 Rock Pressure _____ lbs. _____ hrs.
 Oil _____ bbls., 1st 24 hrs.
 Fresh water 340' 1143' feet _____ feet
 Salt water 1575, 5541 feet _____ feet

Casing and Tubing	Used in Drilling	Left in Well	Packers
Size			
16			Kind of Packer _____
13-3/8	562'	562'	
10-3/4	1074'	1074'	Size of _____
8-5/8	2006'	2006'	
7	4534'	4534'	Depth set _____
5 3/16			
3			Perf. top _____
2			Perf. bottom _____
Liners Used _____			Perf. top _____
			Perf. bottom _____

CASING CEMENTED _____ SIZE _____ No. Ft. _____ Date _____
 COAL WAS ENCOUNTERED AT 620 FEET 48 INCHES
 _____ FEET _____ INCHES FEET _____ INCHES
 _____ FEET _____ INCHES FEET _____ INCHES

Formation	Color	Hard or Soft	Top	Bottom	Oil, Gas or Water	Depth Found	Remarks
Red Rock			0	75			
Slate			75	100			
Red Rock			100	300			
Sand			300	375			Water 340' - 1 B. P. H.
Red Rock			375	500			
Sand			500	525			
Red Rock			525	550			
Line			550	565			
Red Rock			565	590			
White Slate			590	620			
Coal			620	624			
Slate & Shells			624	700			
Sand			700	740			
Red Rock			740	785			
Slate & Shells			785	800			
Red Rock			800	875			Cave 805 & 848
White Slate			875	905			
Red Rock			905	1015			
Line			1015	1035			
Slate			1035	1060			
Line			1060	1106			
Pink Rock			1106	1115			
Sand			1115	1158			Water 1143' - 1 B. P. H.
Slate & Shells			1158	1200			
Sand			1200	1275		6595	
Slate			1275	1315		814	
Sand			1315	1615		5777	Hole full of Water 1575'
Line			1615	1660			
Slate			1660	1700			
Line			1700	1720			
Slate & Shells			1720	1945			
Sand			1945	2000			
Line			2000	2010			
Slate & Shells			2010	2170			
Gritty Lime			2170	2200			
Slate & Shells			2200	3300			Show Gas 2650'
Shale			3300	3500			
Slate & Shells			3500	3700			
Brown Shale			3700	3870			



Big Lime?

APR 15 1948

Formation	Color	Hard or Soft	Top	Bottom	Oil, Gas or Water	Depth Found	Remarks
White Slate			3870	4280			
Brown Shale			4280	4515			
Corniferous Lime			4515	4625			
Oriskany Sand			4625	4666			
Line - <i>Heldreth</i> # <i>Selma</i>			4666	5541			Water 5541' - Newburg.
Newburg (Dolomite)			5541	5566			
Line - <i>McKenzie</i>			5566	5703			
Big Six Sand			5703	5735			
Broken Lime			5735	5756			
Red Lime			5756	5839			
Broken Lime			5839	5849			
Red Lime			5849	5880			
Broken Lime			5880	5965			
Red Lime			5965	6022			
Hard Lime			6022	6062			
Red Rock			6062	6064			
Slate			6064	6075			
Clinton Sand			6075	6141			
Line			6141	6200			
Sand			6200	6212			
Red Medina			6212	6590			
Slate			6590	6595			
Red Medina			6595	6607			
Slate			6607	6627			
Total Depth			6627				

615

Water 5541' - Newburg.

5541
4625
916

5541
314
5227

TRR

Junata

Date April 22, 1948
 APPROVED N. F. Bras Co., Owner
 By G. H. Moore (Title) R
Chief Engineer