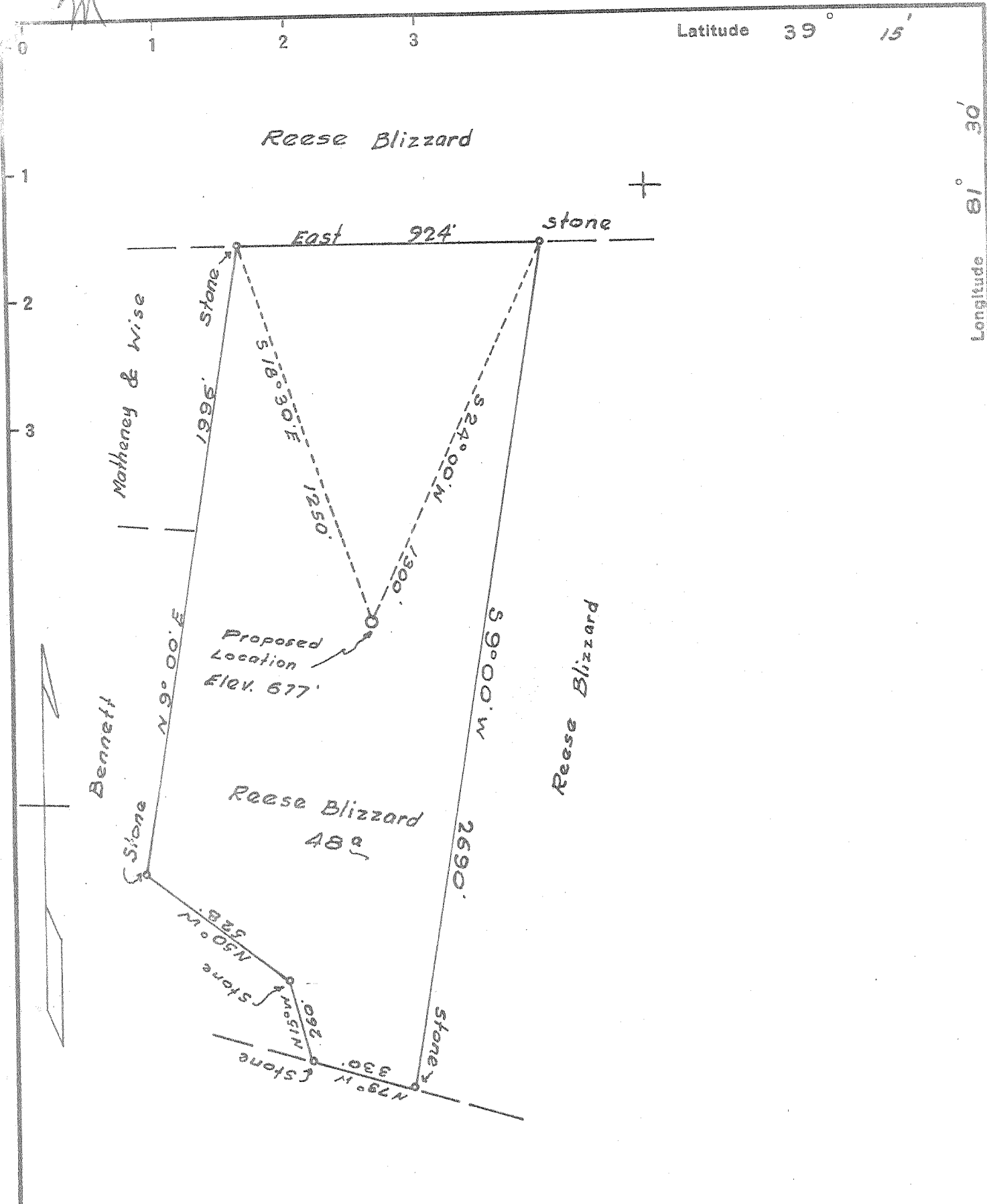


Latitude 39° 15'

Longitude 81° 30'



New Location
 Drill Deeper
 Abandonment

Journal 4-20-70

West Va. Department of Mines, Oil & Gas Division
 Company W.H. Tucker
 Address 2000 Quarrier St., Charleston, W. Va., 25311
Rt. 4, Parkersburg, W. Va.
 Farm Reese Blizzard
 Tract One Acres 48 Lease No. _____
 Well (Farm) No. One Serial No. _____
 Elevation (Spirit Level) 677
 Quadrangle Bellarville NE
 County Wood District Tygart
 Engineer Logan McDonald
 Engineer's Registration No. 610
 File No. _____ Drawing No. _____
 Date Aug. 19, 1937 Scale 1" = 300'

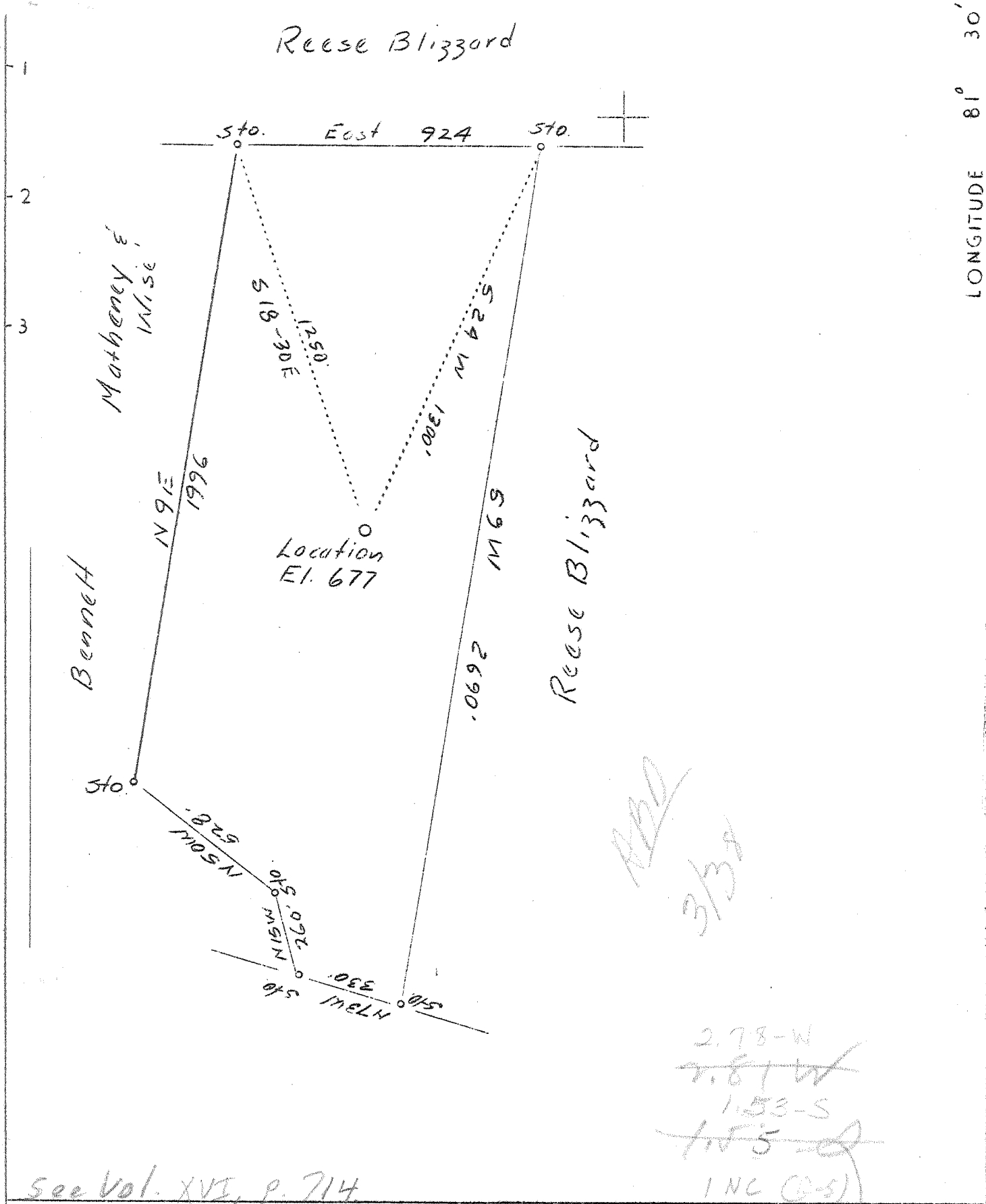
STATE OF WEST VIRGINIA
 DEPARTMENT OF MINES
 OIL AND GAS DIVISION
 CHARLESTON

WELL LOCATION MAP
 FILE NO. W00-68-P-RED-F

+ Denotes location of well on United States Topographic Maps, scale 1 to 62,500, latitude and longitude lines being represented by border lines as shown.

- Denotes one inch spaces on border line of original tracing.

APR 27 1970



See Vol. XVI, p. 714

Company	W.H.Bickel
Address	R.4, Parkersburg, W.Va.
Farm	Reese Blizzard
Tract	1 Acres 48 Lease No.
Well (Farm) No.	1 Serial No.
Elevation (Spirit Level)	677
Quadrangle	Belleville
County	Wood District Tygart
Engineer	Logan McDonald
Engineer's Registration No.	610
File No.	Drawing No.
Date	Aug. 19, 1937 Scale 1"-300'

STATE OF WEST VIRGINIA
 Department of Mines
 OIL AND GAS DIVISION
 CHARLESTON

WELL LOCATION MAP

File No. W 00-~~68~~

Denotes location of well on United States Topographic Maps, scale 1 to 62,500, latitude and longitude lines being represented by border lines as shown.

Denotes 1" spaces on border line of original tracing.

Deep Well

WEST VIRGINIA DEPARTMENT OF MINES
OIL & GAS DIVISION
W E L L R E C O R D

Permit No. W-68-68
- Quad.

Dry Hole
CASING & TUBING

Company	W. H. Bickel	18	16
Address	R 4, Parkersburg, W. Va.	17-1/2	50
Farm	Reese Blizzard ACRES 48	13-1/2	183
Location	Tygart Creek, Wood County, W. Va.	10	920
Well No.	One ELEV. 677	8-1/4	1745
District	Tygart - Wood County	7	4477
Surface & Mineral	Reese Blizzard, Parkersburg, W. Va.		
Commenced	Sept. 7, 1937		
Completed	Dec. 4, 1937		
Shot	1/3/38 - Depth 42 4595-4605		
Open Flow	16/10ths Water in 1/2 inch		
Volume	-		
Rock Pressure	-		
Oil	1-1/2 bbls. 1st 24 hrs.		
Fresh Water	-		
Salt Water	980, 1125, 1430, 1520		

Formation	Hgt	TOP	Base	Result	Formation	Color	Hgt	TOP	Base	Result
Earth & Cave		0	40		Limestone	blk	h	2165	2204	
Red Rock		40	100		Slate	wh	s	2204	2206	
White Slate		100	130		Limestone	gr	h	2206	2250	
Cave		130	175		Slate	blk	s	2250	2275	
Red Rock		175	210		Shale	brn	s	2275	2320	
Slate		210	260		Limestone	gr	h	2320	2428	
Limestone		260	300		Slate	wh	s	2428	2500	
White Slate		300	380		Limestone	wh	s	2500	2540	
Sand		380	410		Slate	wh	s	2540	2955	
Slate		410	470		Shelly Slate	drk	m	2955	2985	
Sand		470	510		Slate	blk	s	2985	2990	
White Slate		510	550		Shelly Slate	drk	h	2990	3180	
Lime and Sand		550	600		Lime Shell	gr	h	3180	3230	
Red Rock		600	770		Shale	brn	s	3230	3250	
White Slate		770	848		Slate	wh	s	3250	3300	
Lime		848	858		Lime Shells	drk	m	3300	3365	
Black Slate		858	893		Lime	blue	h	3365	3385	
Big Dunkard Sand		893	988	W 980	Slate	wh	s	3385	3405	
White Slate		988	1000		Slate	drk	m	3405	3475	
Lime		1000	1085		Slate	wh	s	3475	3535	
Black Slate		1085	1120		Shale	blk	s	3535	3630	
Gas Sand		1120	1160	W & sh. of	Shale	brn	s	3630	3650	
Slate		1160	1165	Oil 1125	Lime	bl	h	3650	3665	
Sand		1165	1195		Shale	brn	s	3665	3710	
White Slate		1195	1205		Lime	gr	h	3710	3720	
Sand		1205	1215		Shale	brn	s	3720	3875	
Black Slate		1215	1230		Slate	wh	s	3875	3882	
Sand		1230	1260		Shale	brn	s	3882	3900	
Slate		1260	1315		Slate	wh	m	3900	4242	
Salt Sand		1315	1455	W 1430	Shale	blk	s	4242	4470	
Black Slate		1455	1465		Lime	CONDORAGA	h	4470	4585	
Injun Sand		1465	1727	W 1520	Gritty Lime	wh	h	4585	4605	Oil & Gas
Slate		1727	1730							4597-4600
Lime		1730	1805		Sand* ORISKANY	wh	h	4605	4627	
White Slate		1805	1830		Gritty Lime	drk	h	4627	4705	
Gritty Lime		1830	1845							
White Slate		1845	1905							
Lime		1905	1945							
Sand Shells		1945	1950							
Black Slate & Shells		1950	1995							
Shale	brn	s	1995	2032						
Berea Sand		h	2032	2041						
Slate	blk	s	2041	2080						
Lime	gr	h	2080	2095						
Slate	blk	s	2095	2125						
Lime	gr	h	2125	2150						
Slate	blk	s	2150	2165						

4470 4605 4627
 677 677 677
 3793 3928 3950

485

Deepwell