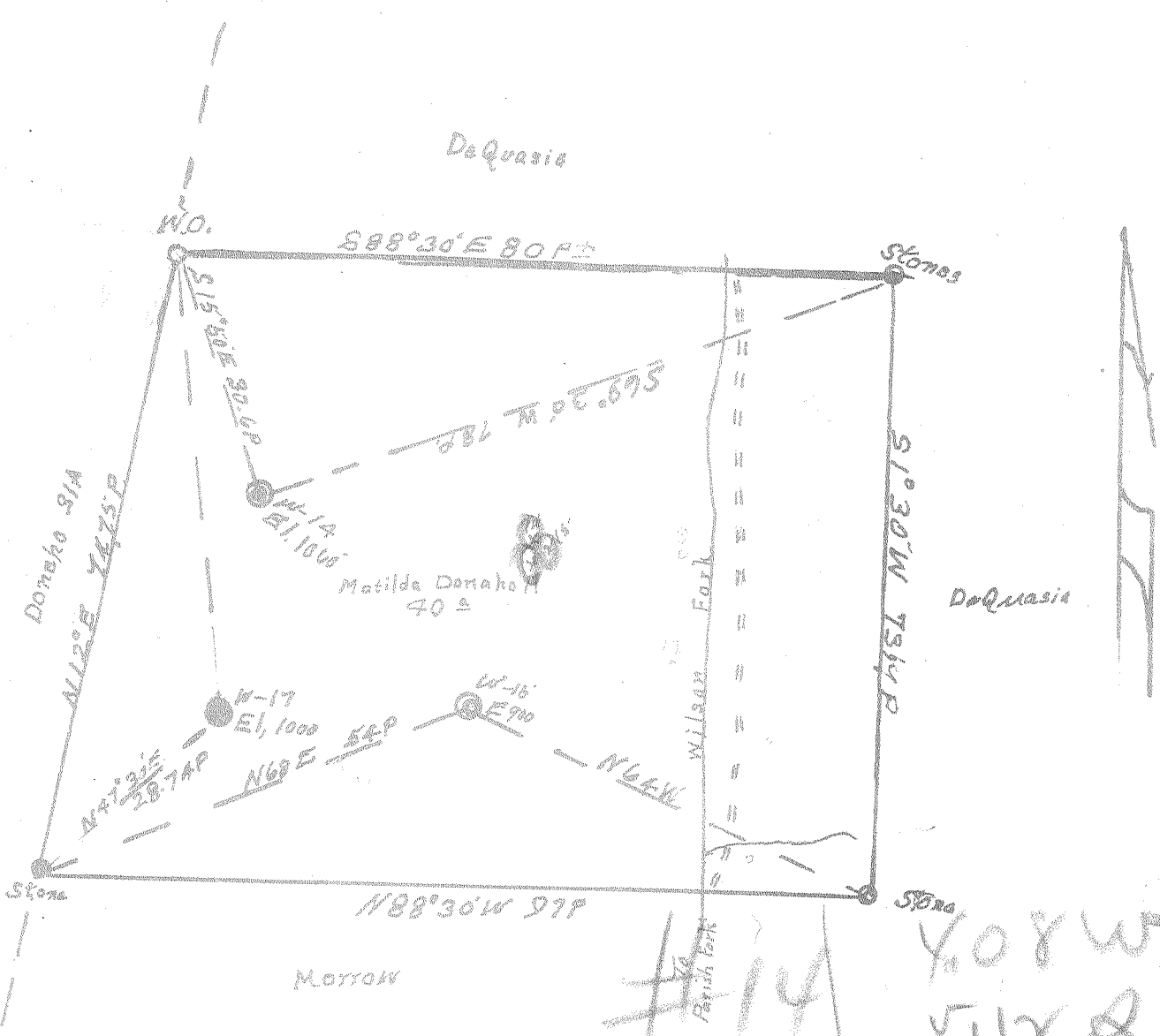


Latitude 10

Longitude 81 15



#14	4,080 W
	5,112 Q
#15	3,998 W
	5,118 Q
#17	4,106 W
	5,127 Q

New Location...
 Drill Deeper.....
 Abandonment.....

✓ ✓ ✓ JUN 28 1954

Company OIL ROCK OIL Co.
 Address ELIZABETH
 Farm Matilda Donoho
 Tract 2 Acres 4.0 Lease No. _____
 Well (Farm) No. 14, 15, 17 Serial No. _____
 Elevation (Spirit Level) 1000-1000-1000
 Quadrangle ELIZABETH
 County WIRT District CLAY
 Engineer Robert R. Anderson
 By J.E.A. Engineer's Registration No. 296
 File No. _____ Drawing No. _____
 Date 6-10-54 Scale 1 in = 20 Feet

STATE OF WEST VIRGINIA
 DEPARTMENT OF MINES
 OIL AND GAS DIVISION
 CHARLESTON

WELL LOCATION MAP
 FILE NO. WIRT-89-A-#14
WIRT-90-B-#15
WIRT-91-A-#17

⊕ Denotes location of well on United States Topographic Maps, scale 1 to 62,500, latitude and longitude lines being represented by border lines as shown.
 - Denotes one inch spaces on border line of original tracing.

MATILDA DONAHO NOS. 14, 15, & 17 - OIL ROCK OIL CO., - WIRT-89-90-91-A