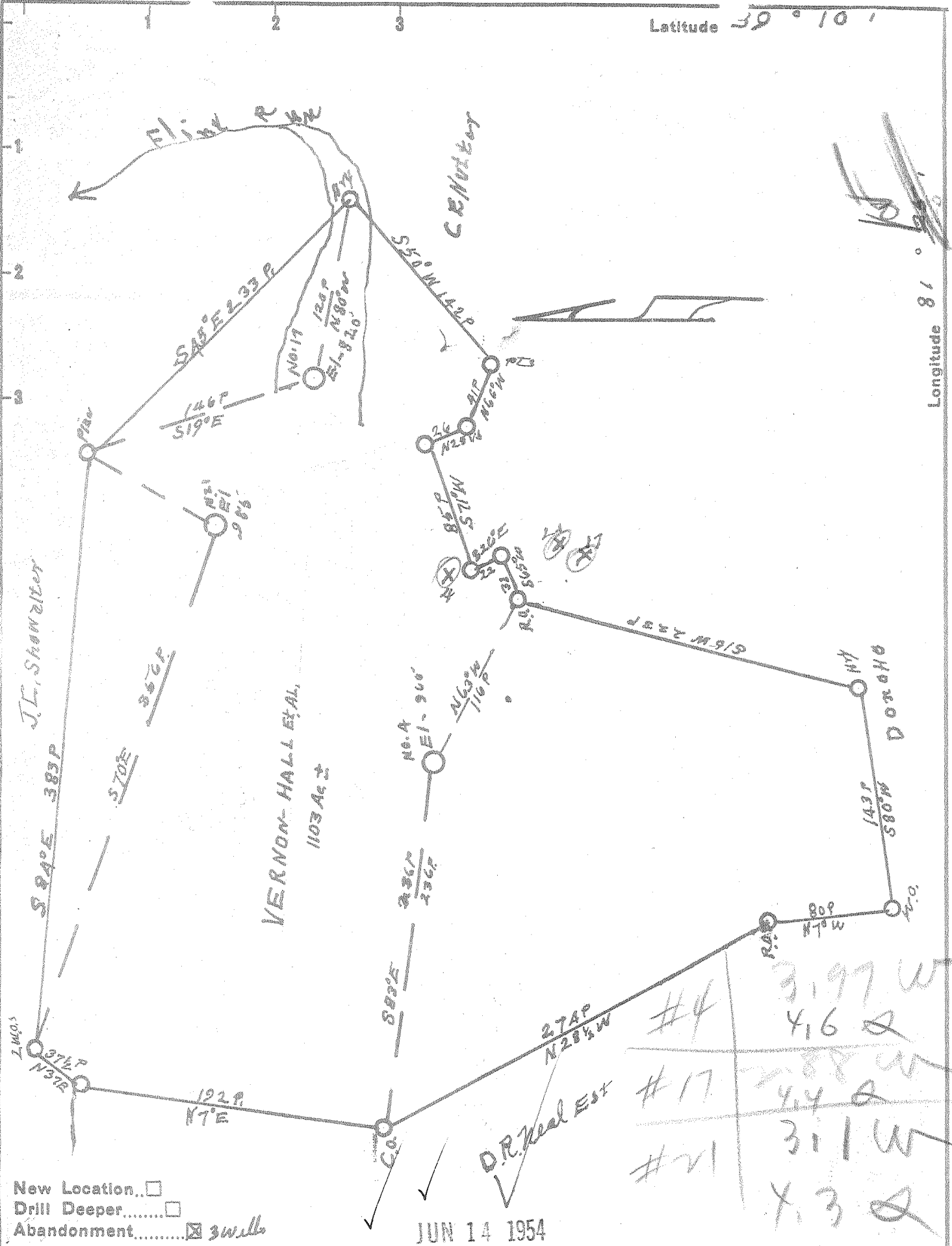


Latitude 39° 10'

Longitude 81° 00'



Company Oil Rock Oil Co.
 Address Elizabeth Wva.
 Farm Vernon-Hall et al
 Tract _____ Acres 1103 Lease No. _____
 Well (Farm) No. 4-17-21 Serial No. _____
 Elevation (Spirit Level) 9-12-21
 Quadrangle ELIZABETH
 County WIRT District CLAY
 Engineer R. Anderson
 Engineer's Registration No. 296
 File No. BY STATE Drawing No. _____
 Date MAY 17 1954 Scale 1 in = 80 Poles

STATE OF WEST VIRGINIA
 DEPARTMENT OF MINES
 OIL AND GAS DIVISION
 CHARLESTON

WELL LOCATION MAP
 FILE NO. WIRT-86-A-#4
WIRT-87-A-#17
WIRT-88-A-#21
 + Denotes location of well on United States Topographic Maps, scale 1 to 62,500, latitude and longitude lines being represented by border lines as shown.
 - Denotes one inch spaces on border line of original tracing.

VERNON HALL ET AL. NOS. 4, 17, & 21 - OIL ROCK OIL CO. - WIRT-86-87-88-A