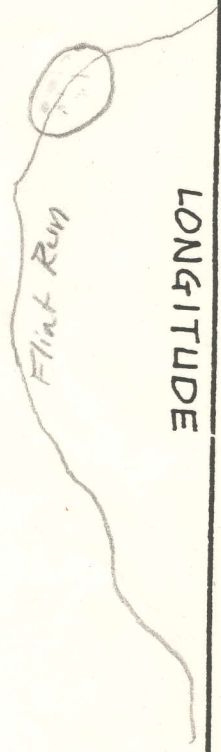


LATITUDE 39° 07' 30''

81° 17' 30''



T'S OGIS topo location

7.5' loc \_\_\_\_\_

15' loc \_\_\_\_\_  
(calc.) \_\_\_\_\_

Company Glen W Roberts

Farm Louis Reed, et al

Quad Girta m

County Wirt

District Clay

WELL LOCATION MAP

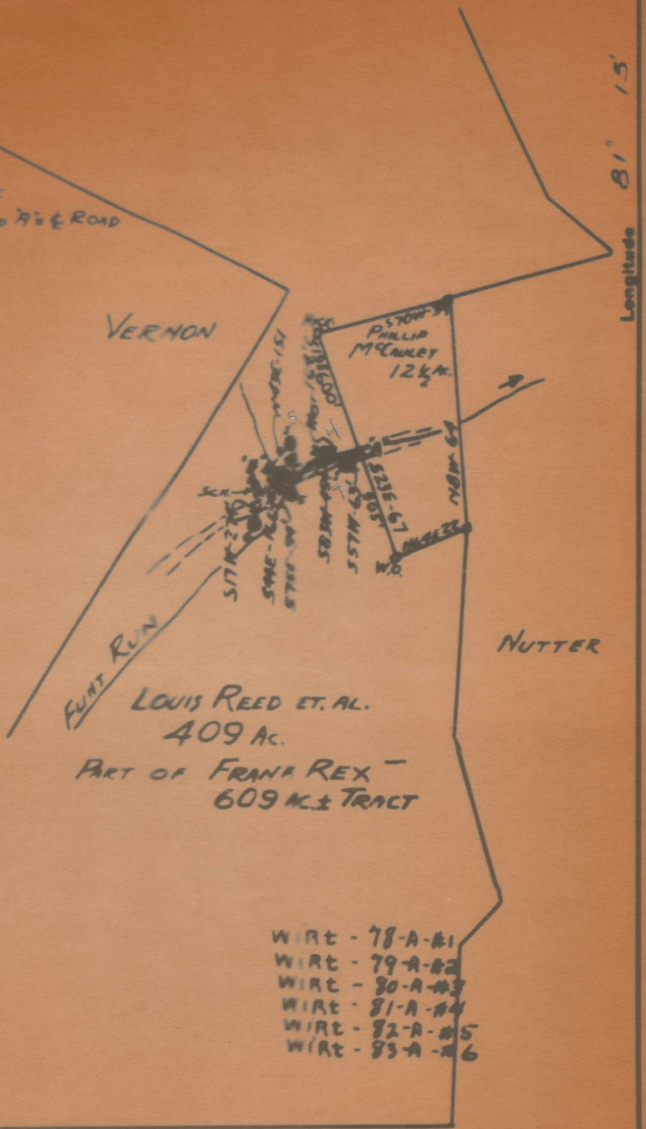
File No. Wirt 78A-83A

No location found

2 SURVEY  
 BEGIN AT HIGHWAY COR. OF REED &  
 MCALEY - ALONG PL. SIDE - 600' TO RIG ROAD  
 ALONG PL. SIDE - 805' TO W.O. COR

- T<sub>1</sub> = A'  
 T<sub>1</sub> = 3.557W - 68'  
 T<sub>2</sub> = N 81° E - 164'  
 T<sub>3</sub> = B' = 585N - 454'  
 T<sub>4</sub> = B'  
 T<sub>5</sub> = N 48° E - 151'  
 T<sub>6</sub> = 3.758 - 84'  
 T<sub>7</sub> = 3.442 - 166'  
 T<sub>8</sub> = 3.17N - 214'

- ELEVATIONS  
 1 = 698'  
 2 = 697'  
 3 = 716'  
 4 = 702'  
 5 = 700'  
 6 = 708'



LOUIS REED ET. AL.  
 409 AC.  
 PART OF FRANK REX -  
 609 AC ± TRACT

- WIRE - 78-A-81  
 WIRE - 79-A-82  
 WIRE - 80-A-83  
 WIRE - 81-A-84  
 WIRE - 82-A-85  
 WIRE - 83-A-86

New Location   
 Drill Deeper   
 Abandonment

*Handwritten signature*

Company GLEN W ROBERTS  
 Address ELIZABETH, WEST VA  
 Farm LOUIS REED ET AL  
 Tract 409 Acres Lease No. \_\_\_\_\_  
 Well (Farm) No. U.S. 86 Serial No. \_\_\_\_\_

STATE OF WEST VIRGINIA  
 DEPARTMENT OF MINES  
 OIL AND GAS DIVISION  
 CHARLESTON

WELL LOCATION MAP

# WELL RECORD

Permit No. \_\_\_\_\_

 Oil or Gas Well Oil

Company Glen W. Roberts  
 Address Elizabeth, W. Va.  
 Farm Louis Reed et. al. Acres 409  
 Location (waters) Flint Run  
 Well No. 5 Elev. \_\_\_\_\_  
 District CLAY County Wirt  
 The surface of tract is owned in fee by Louis Reed et. al.  
 Address Elizabeth, W. Va.  
 Mineral rights are owned by Louis Reed et. al.  
 Address Elizabeth, W. Va.

Casing and Tubing	Used in Drilling	Left in Well	Packers
Size			
16			Kind of Packer
18			
10			Size of
8 1/4			
6 1/2		Unknown	Depth set
5 3/16			
2			Perf. top
2		Unknown	Perf. bottom
Liners Used			Perf. top
			Perf. bottom

Drilling commenced \_\_\_\_\_  
 Drilling completed \_\_\_\_\_  
 Date Shot \_\_\_\_\_ From \_\_\_\_\_ To \_\_\_\_\_  
 With \_\_\_\_\_  
 Open Flow /10ths Water in \_\_\_\_\_ Inch  
 /10ths Merc. in \_\_\_\_\_ Inch  
 Volume \_\_\_\_\_ Cu. Ft.  
 Rock Pressure \_\_\_\_\_ lbs. \_\_\_\_\_ hrs.  
 Oil \_\_\_\_\_ bbls., 1st 24 hrs.  
 Fresh water \_\_\_\_\_ feet \_\_\_\_\_ feet  
 Salt water \_\_\_\_\_ feet \_\_\_\_\_ feet

CASING CEMENTED \_\_\_\_\_ SIZE \_\_\_\_\_ No. Ft. \_\_\_\_\_ Date \_\_\_\_\_  
 COAL WAS ENCOUNTERED AT \_\_\_\_\_ FEET \_\_\_\_\_ INCHES  
 \_\_\_\_\_ FEET \_\_\_\_\_ INCHES FEET \_\_\_\_\_ INCHES  
 \_\_\_\_\_ FEET \_\_\_\_\_ INCHES FEET \_\_\_\_\_ INCHES

Formation	Color	Hard or Soft	Top	Bottom	Oil, Gas or Water	Depth Found	Remarks
Old oil well now abandoned. No record is available. No nearby well record seems to correlate therewith. Well is reportedly less than 300 ft. deep.							



REED, LOUIS, ET AL., NO. 5.

Wirt-82-A.

By Glen W. Roberts.

Clay Dist.

NO FLAT