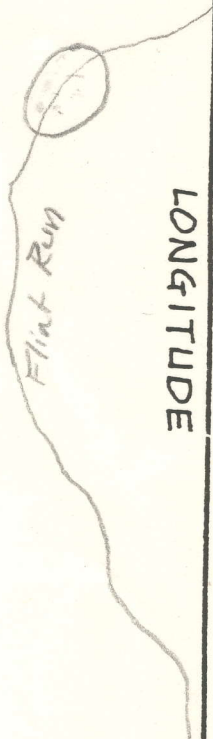


LATITUDE 39° 07' 30"

89° 17' 30"



7.5 OGIS topo location

7.5' loc _____ 15' loc _____
 (calc.) _____

Company Glen W Roberts

Farm Louis Reed, et al

Quad Girdaun

County Wirt

District Clay

WELL LOCATION MAP

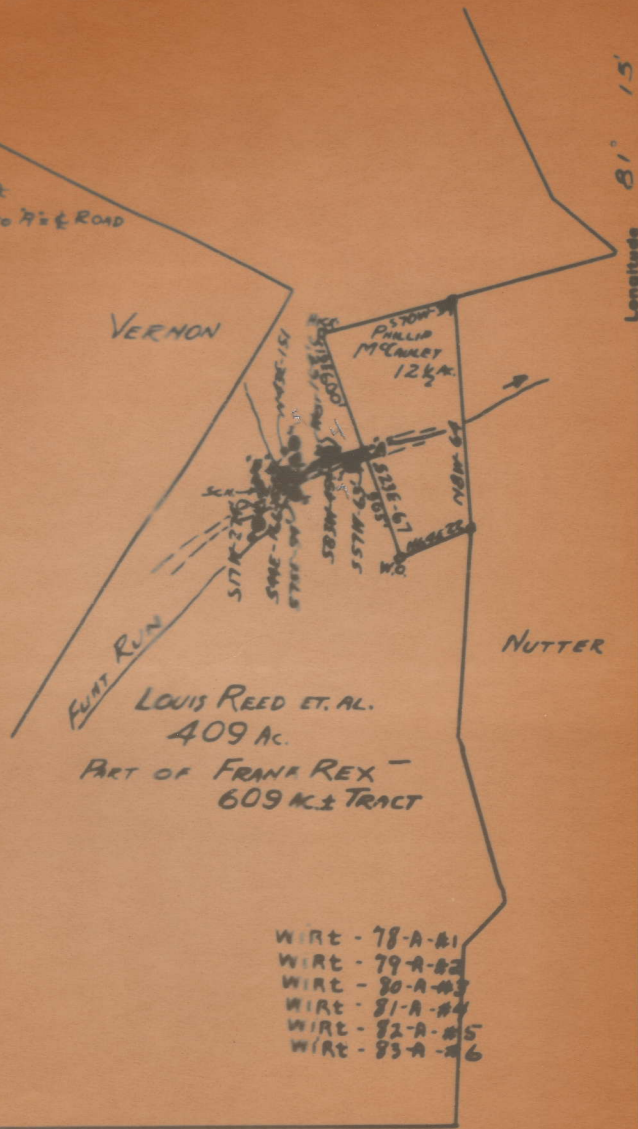
File No. Wirt 78A-83A

No location found

2 SURVEY
 BEGIN AT HICKORY COR. OF REX &
 MCRALEY - ALONG PL. SIDE - 600' TO 7 1/2' & ROAD
 ALONG PL. SIDE - 505' TO W.O. COR.

- T to A
 T to 1 - 587W - 68'
 T to 2 - N 61E - 164'
 T to B - 585W - 454'
 T to B'
 T to 3 - N 48E - 151'
 T to 4 - S 75E - 84'
 T to 5 - 344E - 166'
 T to 6 - 517N - 274'

- ELEVATIONS
 1 - 698'
 2 - 697'
 3 - 716'
 4 - 702'
 5 - 700'
 6 - 708'



- WIRT - 78-A-#1
 WIRT - 79-A-#2
 WIRT - 80-A-#3
 WIRT - 81-A-#4
 WIRT - 82-A-#5
 WIRT - 83-A-#6

New Location
 Drill Deeper
 Abandonment

Handwritten signature

Company	GLEN W ROBERTS
Address	ELIZABETH, WEST VA
Farm	LOUIS REED ET AL
Tract	409 Acres
Well (Farm) No.	22956
Serial No.	

STATE OF WEST VIRGINIA
 DEPARTMENT OF MINES
 OIL AND GAS DIVISION
 CHARLESTON

WELL LOCATION MAP

REED, LOUIS, ET AL., NO. 2.

Wirt-79-A.

By Glen W. Roberts.

Clay Dist.

NO PLAT